

Data Sheet

Product Description:

beer FOAM STOP eliminates unwanted foam when beer kegs are tapped.

The **BFS** automatically closes the beer lines before gas which creates foam - enters the line.

The line remains fully primed with beer, ready to serve a perfect first glass after a new keg is connected. Since the beer line does not run dry, microbiological growth in the beer line is reduced significantly.

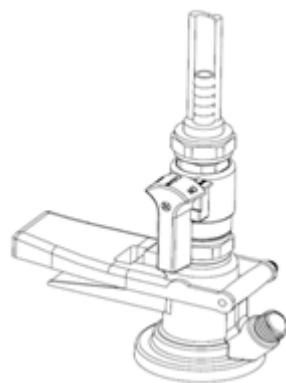
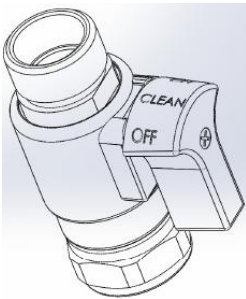
Connected on the keg coupler – saves time and installation costs

Perfect for installation under the counter or portable bars

BFS Includes Shutoff Valve for safety/after hours close the line

CHANGING KEG PROCEDURE

1. Disconnect the coupler from the empty keg
2. Switch to OFF
3. Connect the coupler to a full keg
4. **Slowly** switch to ON



CPESIFICATIONS

- Bottom connection - 1/2' 5/8' 3/8' M18 [MicroMatic safety coupler]
- Head connection - JG \ BSP
- Size: High:7 cm, Weight:100gr
- Material: Body: Stainless Steel grade 316

| | |
|----------------------------------|----------------------|
| Overall length | 64.5 millimeter |
| Additional length for connection | 54.5 millimeter |
| Diameter without the handle | 27.5 millimeter |
| Minimum dispensing speed | 0.9 liter per minute |
| Maximum dispensing speed | 12 liter per minute |

