

RACECOMP ENGINEERING

2022-2023 WRX LOWERING SPRING INSTALLATION

DISCLAIMER: PLEASE READ

We (Racecomp Engineering) are not responsible for any issues resulting from improper installation. Removal and installation of suspension components may be dangerous, as parts may be under compression and are likely to shift unexpectedly, causing serious injury or death. Installation should be performed by an ASE certified Subaru technician. Unless you are a technician by trade, you should not attempt installation of this part. Please use caution when driving your vehicle after installation, as handling characteristics may have changed dramatically.



PLEASE READ CAREFULLY BEFORE INSTALLATION

Tools Needed

- 12mm socket
- 19mm, socket & wrench
- 14mm socket & wrench
- 17mm socket & wrench
- 6mm Allen key
- Torque Wrench
- Spring Compressor

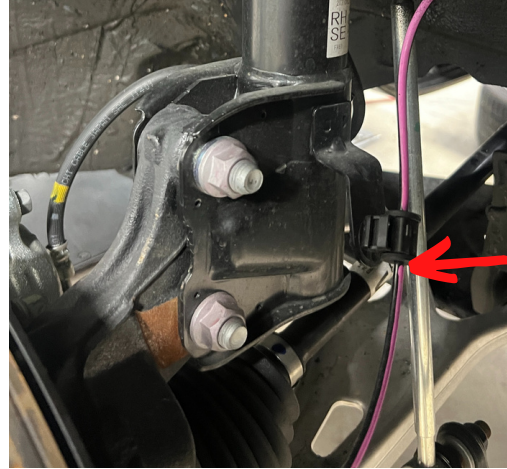
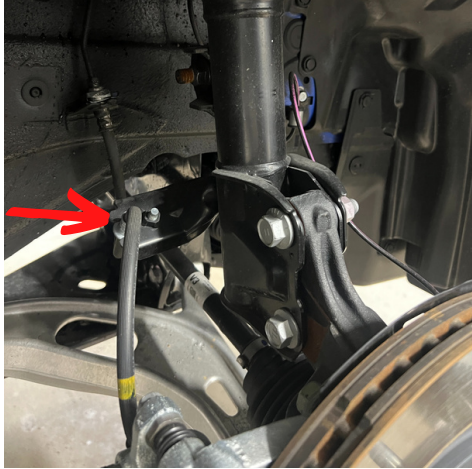
Package Contents

- Front springs x2
- Rear springs x2

Racecomp Engineering products are produced and assembled with the highest quality ensuring an easy install. However, sometimes complications arise during installation. In that case, please contact Racecomp Engineering.

Installation Instructions for Front Springs

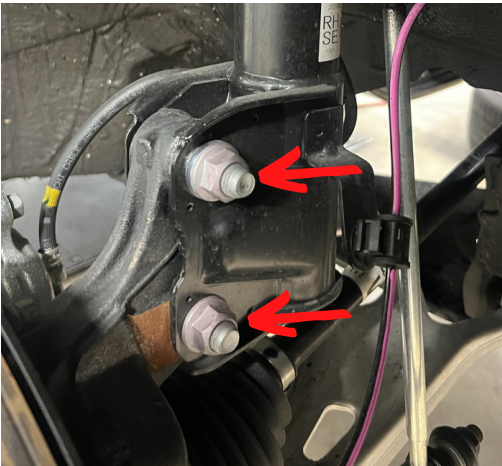
1. Jack up vehicle, place on jack stands, and remove wheels.
2. Remove brake line and ABS wire from front strut



3. Remove the 17mm nut/bolt attaching the sway bar to the strut.



4. Remove two lower 19mm clevis nuts/bolts.



5. Remove three upper 12mm nuts that fasten strut top mounts to chassis



6. Carefully remove strut/spring assembly from vehicle.

7. Compress spring using wall mounted or hand operated spring compressors.



8. Remove the center top nut and remove top mount, upper spring perch and spring, dust boot, and bump stop

9. Trim the factory bump stops 20mm & reinstall trimmed bump stop and dust boot.



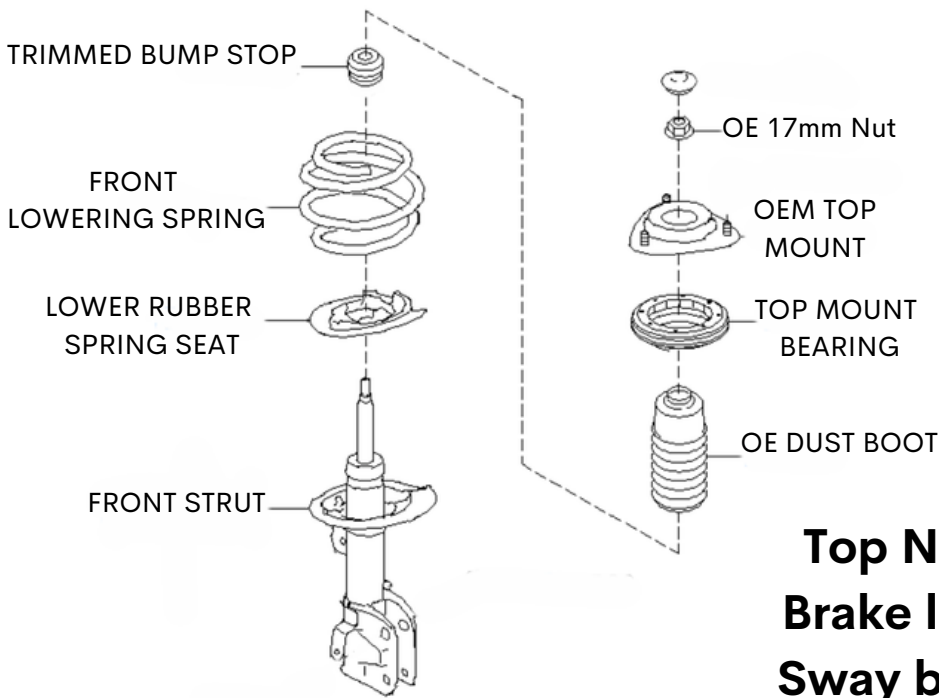
10. Place the new RCE lowering spring on the strut making sure the lower spring is seated correctly on the rubber spring seat.

11. Place the OE top bearing and top mount onto the spring, install top nut and torque to **40.6 ft-lb**.



11. Install completed strut/spring assembly onto vehicle and torque all bolts

12. Repeat process for other side.

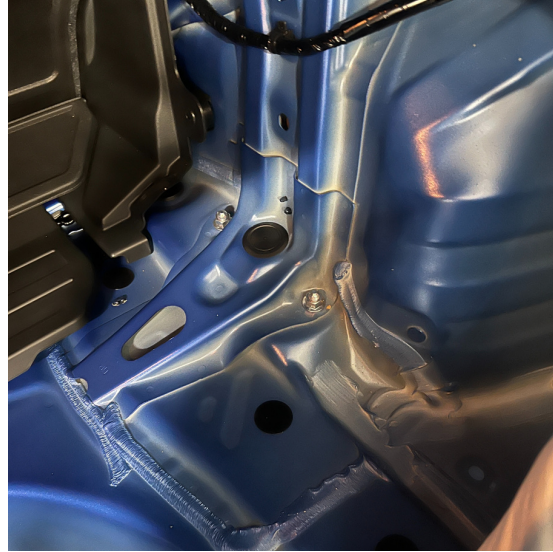
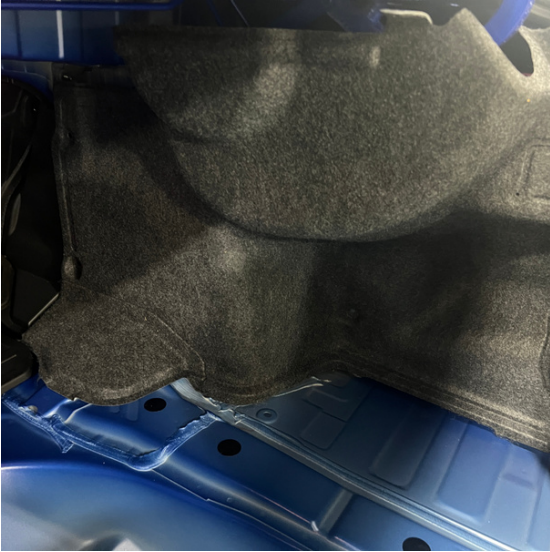


Top Nut: 40.6 ft-lbs
Brake line: 24.3 ft-lbs
Sway bar : 44.3 ft-lbs

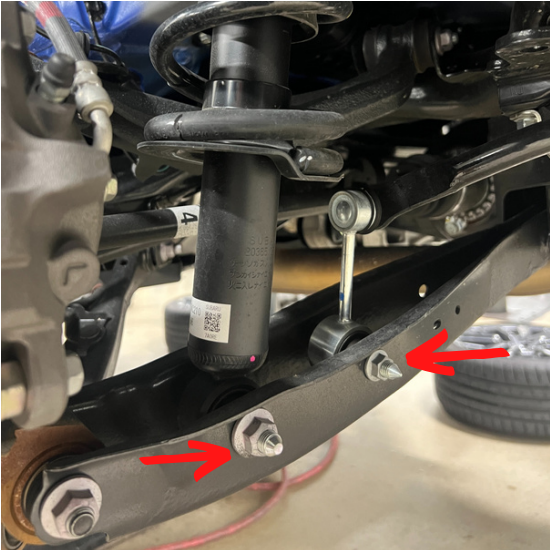
Top mount to chassis nuts: 23.6 ft-lbs
Lower clevis bolts/nuts: 114.3 ft-lbs

Installation Instructions for Rear Springs

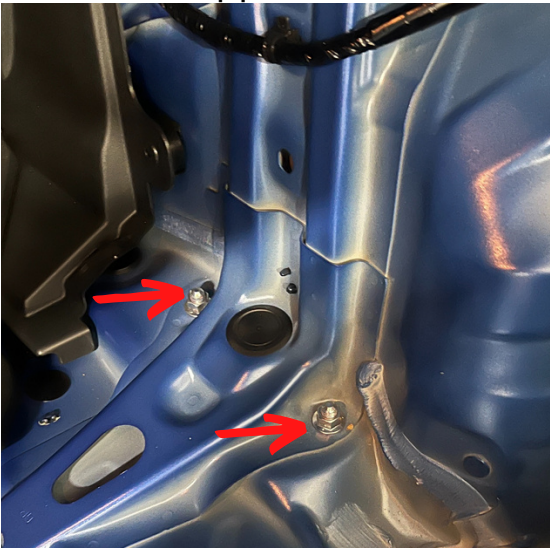
1. Remove trunk mat and plastic side covers to expose the tops of rear shocks.



2. Remove the nut/bolt that attaches the shock(17mm) and sway bar endlink(14mm).



3. Remove two upper nuts that fasten top mounts to chassis. (14mm)



4. Push down on the control arm and remove shock from vehicle.
5. Compress the rear spring and remove the center top nut. (19mm)



6. Remove top mount, spring, dust boot, and bump stop from shock.
7. Trim the bump stops 20mm (SEE PG.3). Reinstall bump stop and dust boot onto rear shock.



Installation Instructions for Rear Springs

- 1.
2. Remove top mount, spring, dust boot, and bump stop from shock.
3. Trim the bump stops 20mm (SEE PG.3). Reinstall bump stop and dust boot onto rear shock.
4. Install RCE spring onto shock, making sure that it is oriented correctly in the spring seat.
5. Install dust boot, and top mount onto shock.
6. Install top nut onto strut and torque to 18.4ft-lb.
7. Install completed shock/spring assembly onto vehicle and torque all bolts
8. Reinstall trunk mat and plastic side covers.
9. Reinstall wheels and torque lug nuts to 88.5 ft-lb.
10. Remove car from jack stands. Get an alignment and enjoy your new springs!

Top nut: 18.4 ft-lbs

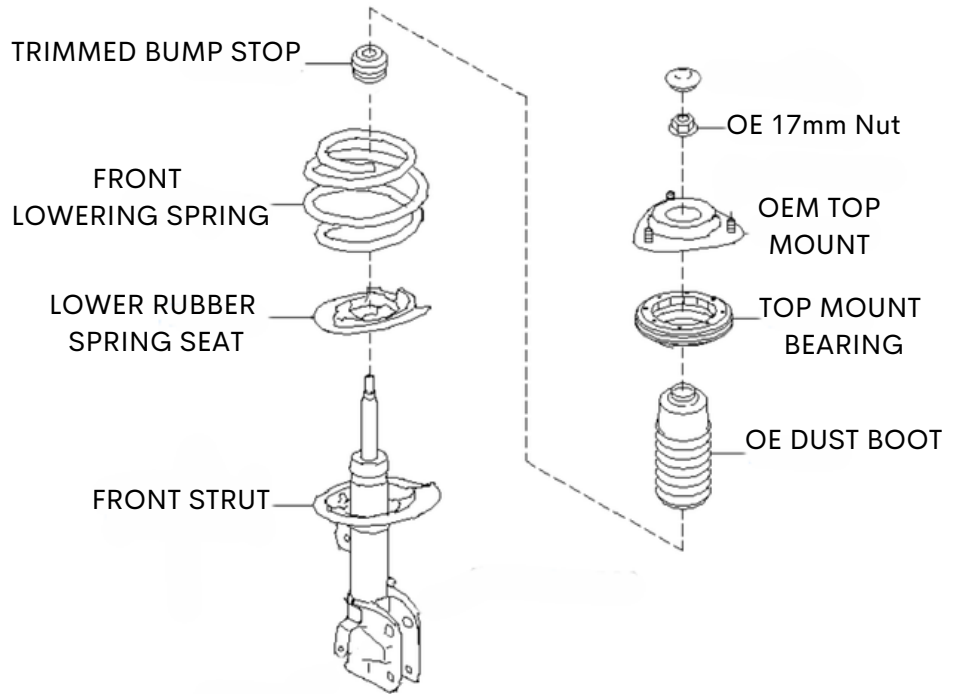
Swaybar endlink: 28 ft-lb

Shock to swingarm: 62.7 ft-lb

Top mount to chassis nuts: 22.1 ft-lb

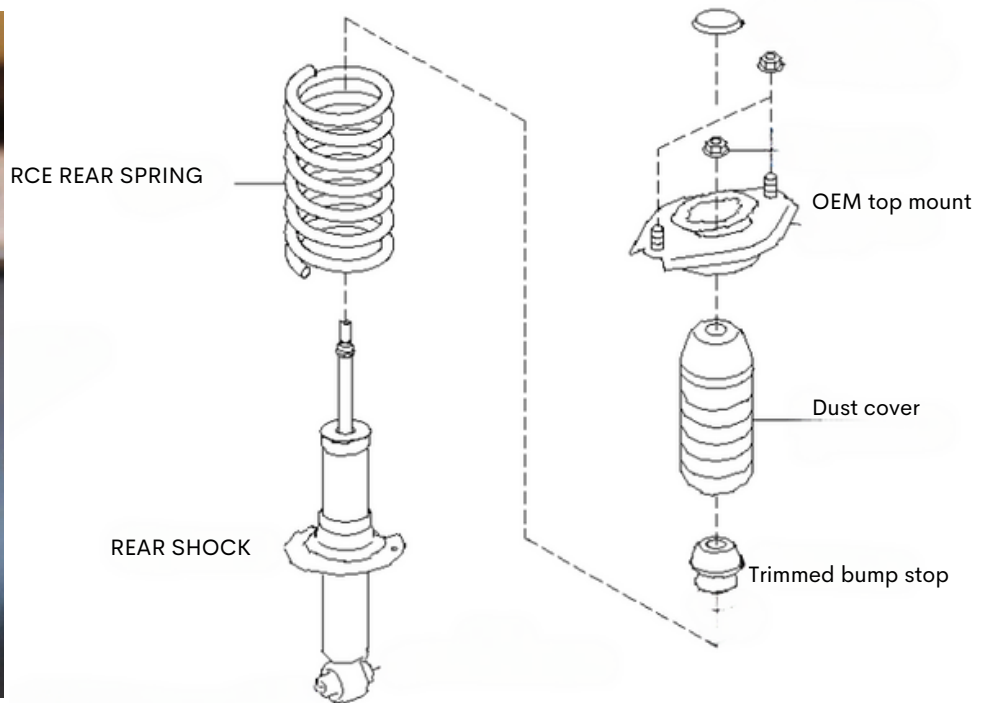
FRONT

FRONT BUMP STOP



REAR

REAR BUMP STOP



Recommended Alignment Settings:

For daily driving: -1.0 degrees front camber, 0 toe. Rear camber not adjustable.

For track/auto-x with stock camber bolts: Maximum negative front camber, 0 toe. Rear camber not adjustable.

For track/auto-x with camber plates/bolts: -2.0 to -3.0 degrees front camber, 0 toe. Rear camber not adjustable.

NOTE: These are baseline recommendations. Your settings may vary depending on tires, other suspension modifications, and driving style.

ANOTHER NOTE: After installing these springs, please take some time to familiarize yourself with your car's new handling characteristics. The car may behave differently in various situations.

For technical support, please call us at (410) 846 5407