



BillieBars - SMALL MOLLE PANEL INSTALLATION



SUPPLIED PARTS

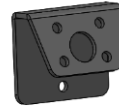
1X SMALL MOLLE PANEL

2X SMALL MOLLE PANEL ANGLED BRACKETS

1X HARDWARE BAG



SMALL MOLLE PANEL (1X)



SMALL MOLLE PANEL ANGLED BRACKETS (2X)

TOOLS REQUIRED

T40 SECURITY BIT

13MM WRENCH / SOCKET

TAPE MEASURE

INSTALLATION

Torque and Tool Chart		
Bolt	Tool	Torque
M8 Tamper Hd Bolt or Nut	13mm Wrench / Socket /T40 Bit	15-20 ft*lbs

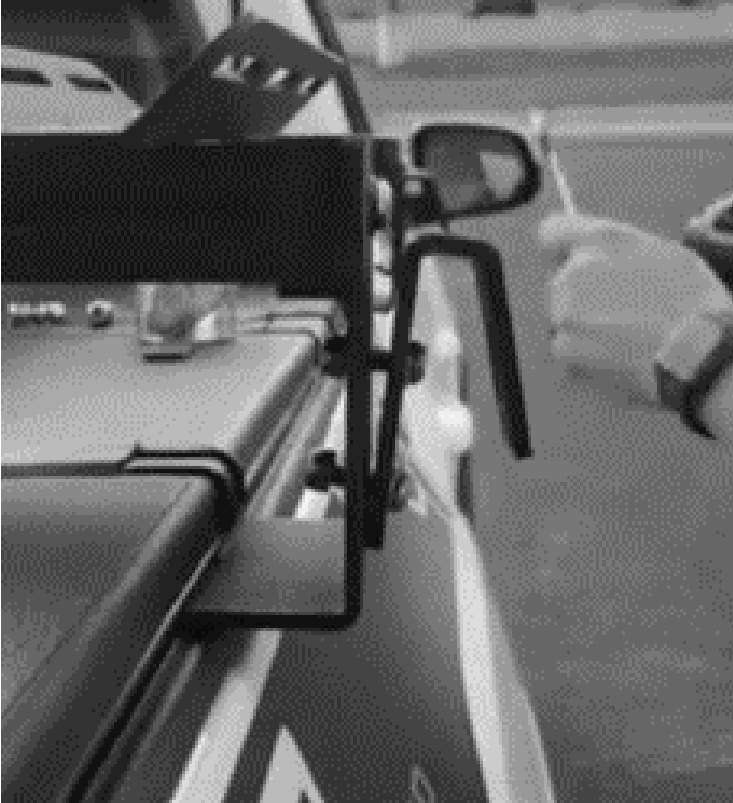
ANGLED MOUNTING BRACKETS

When installing brackets, align holes with holes in the BillieBars rack brackets. Use a 13mm wrench and the T40 Security bit to mount the angled molle bracket. The hardware used will be the T40 button head cap screw, two flat washers and a nylock hex nut. There will be 4 total bolts for 2 brackets.

Note: A dab of anti-seize will help prevent galling of the threads. Alignment for the panel will be detailed in a following step



The hardware stack up is a T40 Security bolt, flat washer, molle panel metal, flat washer, nylock hex nut.

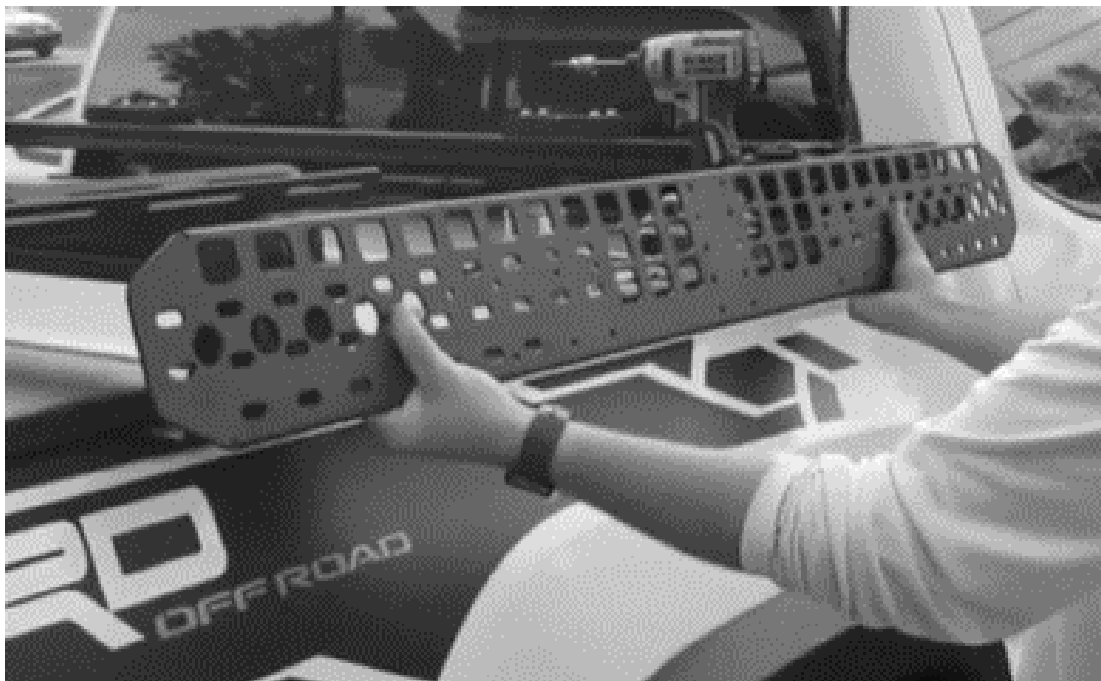


Tighten Screws to 15 ft*lbs using a 13mm wrench and T40 Bit. Periodically check tightness.

SMALL MOLLE PANEL

After the small molle panel angled brackets are mounted the actual molle panel can then be assembled. The slotted holes in the panel are for mounting and adjusting per your bar spacing. The square holes in the top of the panel allow for easy access to the crossbar bolts for removal (keep your truck a truck and still have full bed access). There are 8 total bolt assemblies for mounting the panel to the angled brackets

Note: A dab of anti-seize will help prevent galling of the threads. You may have to loosen your BillieBars Rack brackets to better align the mounting holes for the molle panels.



The hardware stack up is a T40 Security bolt, flat washer, molle panel metal, flat washer, nylock hex nut.



Tighten Screws to 15 ft*lbs using a 13mm wrench and T40 Bit. Periodically check tightness.

USE GUIDELINES

We encourage safe usage of all our products we have tested and designed for real life use. This being said, there are always outside factors we can't always account for and comprehend.

- Only use racks that were designed for your specific vehicle.
- Be certain all knobs, bolts, screws and nuts are firmly tightened and torqued before every driving event. These should be periodically inspected for tightness and any other stress or signs of fatigue.
- The maximum loads should never be exceeded. Weight ratings are 400lbs dynamic and 800lbs static max distributed load for the 5 and 8 inch high racks. The weight rating our retractable covers with integrated t-slot racks are way higher than the actual covers can handle. Please refer to your cover manufacturers' suggested loads. These loads are always calculated by the entirety of accessories mounted. For example, any mounting brackets would be added to the load being carried. The maximum weight rating will also be determined by the truck manufacturers' recommended load rating and should never be exceeded by our ratings.
- High speed off-road driving has not officially been tested with our racks.
- It is the user's responsibility to ensure all loads are attached firmly and safely. All local and state laws should be followed when loading your vehicle.

WARRANTY

BillieBars Warrants our branded products free from defects in material and workmanship, for terms specified below, provided there has been normal use and proper maintenance. All remedies under this warranty are limited to the repair or replacement of any item found by the factory to be defective within the time period specified. Damage to products caused by accidents, Fire, vandalism, negligence, mis-installation, misuse, Acts of God, or by defective parts not manufactured by us, is not covered under this warranty. THE WARRANTY TIME PERIOD IS AS FOLLOWS: (2) TWO YEARS FROM DATE OF PURCHASE.

FOR WARRANTY ISSUES PLEASE REACHOUT TO US AT INFO@BILLIEBARS.COM