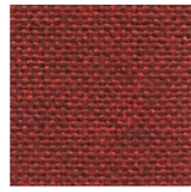
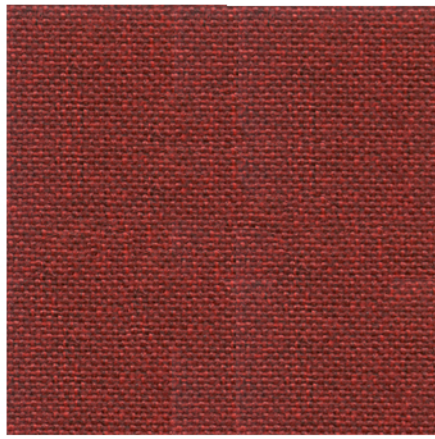
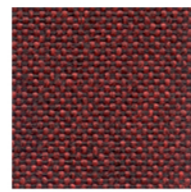


ROCCIA

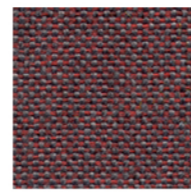
inloom



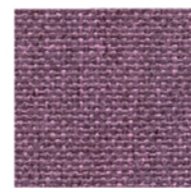
4504



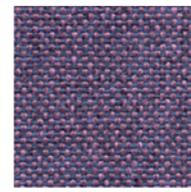
4503



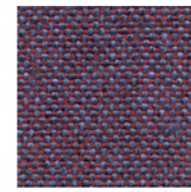
4502



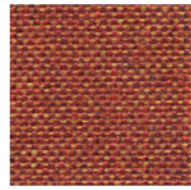
5503



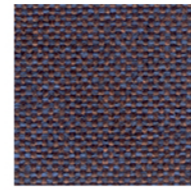
5502



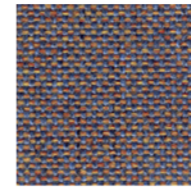
5501



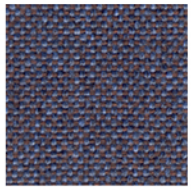
4501



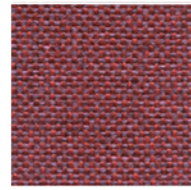
6507



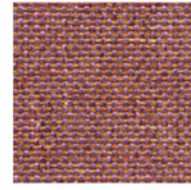
6508



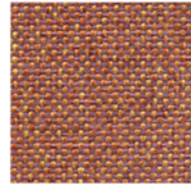
6506



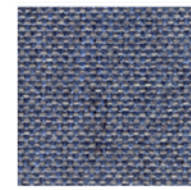
4505



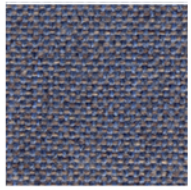
5505



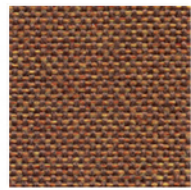
5504



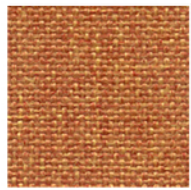
6503



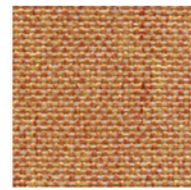
6504



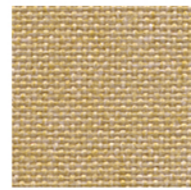
3501



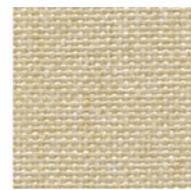
3503



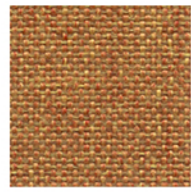
3504



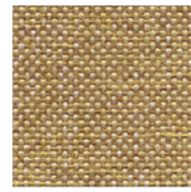
3505



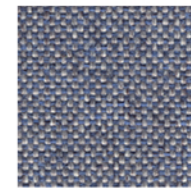
1501



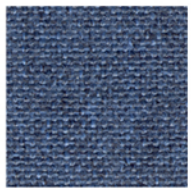
3502



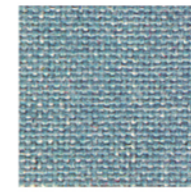
3506



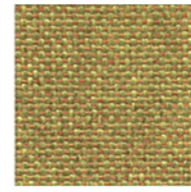
6502



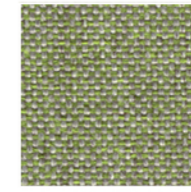
6505



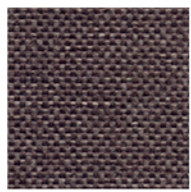
6501



3508



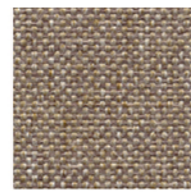
7504



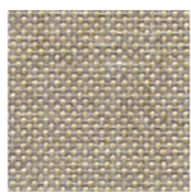
2501



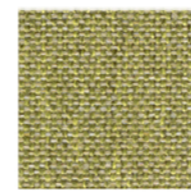
1504



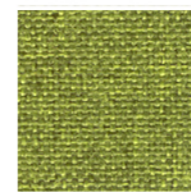
1503



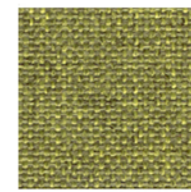
1502



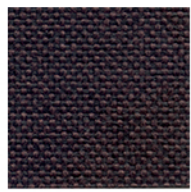
7503



7502



7501



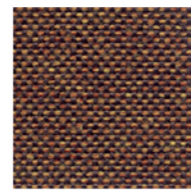
2505



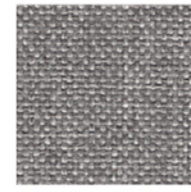
2504



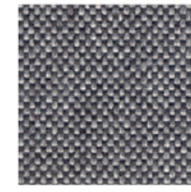
2503



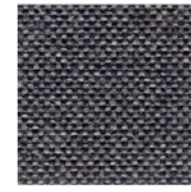
2502



8501



8502



8030



8504

ROCCIA

# Specification

SPECIFICATION	STANDARD	TOLERANCE	ACHEIVED
COMPOSITION	100% TREVIRA CS POLYESTER		
ENVIRONMENTAL	OEKO-TEX Standard 100	EU ECO LABEL	
ABRASION	ISO 12947-2 (Martindale)	± 10%	70,000
WIDTH (cm)	—	± 2%	140
WEIGHT (g/lm)	EN 12127	± 5%	350
PILLING (2000 rubs)	ISO 12945-2	from 4 to 5	5
LIGHT FASTNESS (blue scale)	ISO 105-B02 (Xoenotest)	from 5 to 8	6
FASTNESS TO RUBBING	ISO 105-X12 (Crockmeter)	from 4 to 5	4/5 (grey scale)

Slight colour variation within commercial tolerance may occur between batches due to properties of textiles

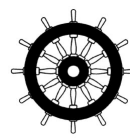
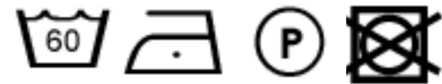
Digital fabric image may not be colour accurate. Always request fabric sample before ordering

## FLAMMABILITY

EN 1021-1&2 Cigarette & Match  
 BS 7176 Low Hazard  
 BS 5852 Ignition source/ Crib 5  
 BS 7176 Medium Hazard  
 EN 13773 Class 1  
 UNI 9174 - 8456 Class C1  
 UNI 9175 Class 1 IM  
 DIN 4102 Class B1  
 NF 92501-7 Class M1  
 NF D 60013 Class AM18  
 OENORM 3800-1 Class B1,Q1,TR1  
 California TB117  
 USA NFPA 701  
 USA NFPA 260  
 IMO Part 8 Upholstery

Flammability performance is dependent upon the foam used

## CLEANING AND WASHING



# inloom

fabrics