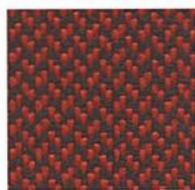
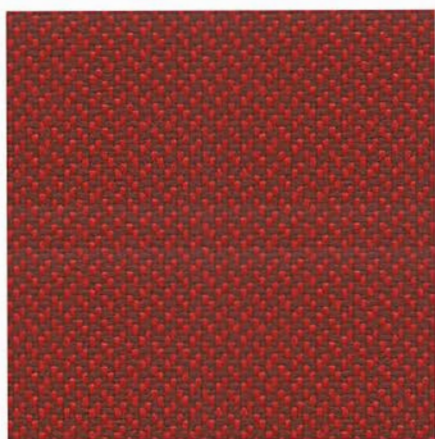
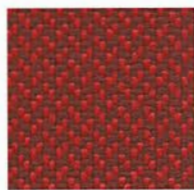


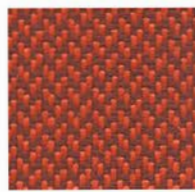
RIVA



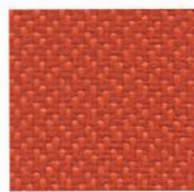
9421



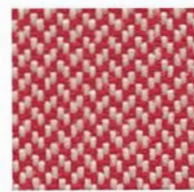
9411



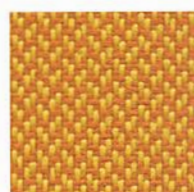
9371



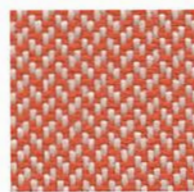
9361



9401



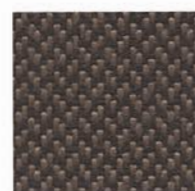
9311



9351



9301



9121



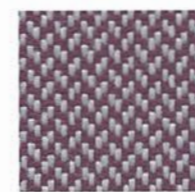
9111



9101



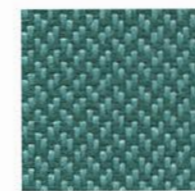
9511



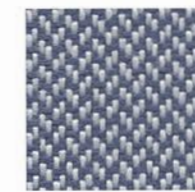
9501



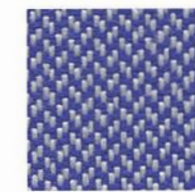
9701



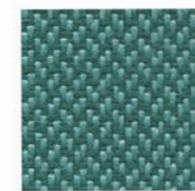
9721



9651



9601



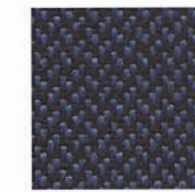
9731



9731



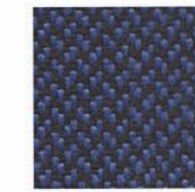
9661



9671



9611



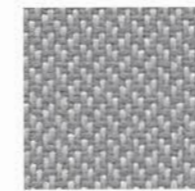
9621



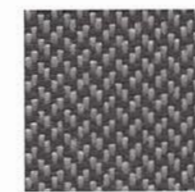
9751



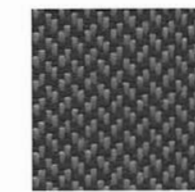
9761



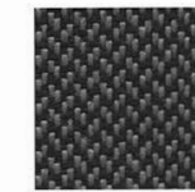
9801



9811



9821



9831

inloom

RIVA

# Specification

SPECIFICATION	STANDARD	TOLERANCE	ACHEIVED
COMPOSITION	100% TREVIRA CS POLYESTER		
ENVIRONMENTAL	OEKO-TEX Standard 100	EU ECOLABEL	
ABRASION	ISO 12947-2 (Martindale)	± 10%	100,000
WIDTH (cm)	—	± 2%	140
WEIGHT (g/lm)	EN 12127	± 5%	365
PILLING (2000 rubs)	ISO 12945-2	from 4 to 5	5
LIGHT FASTNESS (blue scale)	ISO 105-B02 (Xoenotest)	from 5 to 8	6
FASTNESS TO RUBBING	ISO 105-X12 (Crockmeter)	from 4 to 5	4/5 (grey scale)

Slight colour variation within commercial tolerance may occur between batches due to properties of textiles

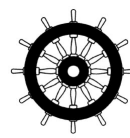
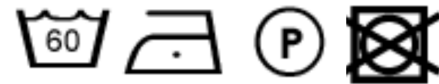
Digital fabric image may not be colour accurate. Always request fabric sample before ordering

## FLAMMABILITY

EN 1021-1&2 Cigarette & Match  
 BS 7176 Low Hazard  
 BS 5852 Ignition source/ Crib 5  
 BS 7176 Medium Hazard  
 EN 13773 Class 1  
 UNI 9174 - 8456 Class C1  
 UNI 9175 Class 1 IM  
 DIN 4102 Class B1  
 NF 92501-7 Class M1  
 NF D 60013 Class AM18  
 OENORM 3800-1 Class B1,Q1,TR1  
 California TB117  
 USA NFPA 701  
 USA NFPA 260  
 IMO Part 8 Upholstery

Flammability performance is dependent upon the foam used

## CLEANING AND WASHING



# inloom

fabrics