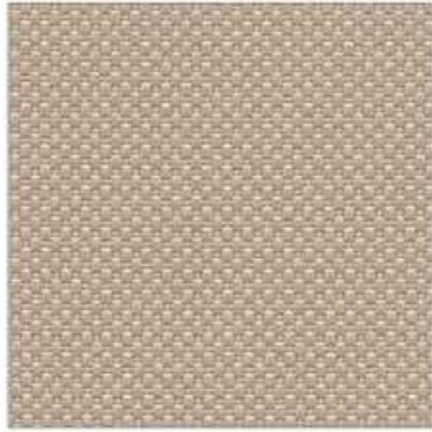


RADIO



2021



2521



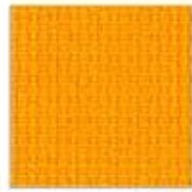
2013



1010



1510



3008



3082



3094



4037



4046



4027



4028



4017



4517

inloom



8033



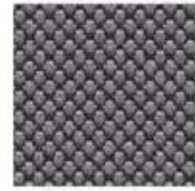
8517



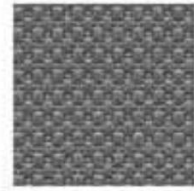
8017



7025



8532



8032



8027



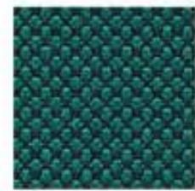
7541



7041



7036



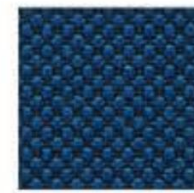
7508



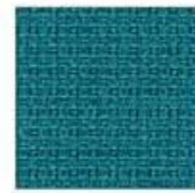
7008



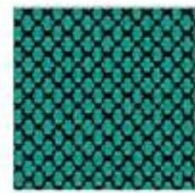
7045



6512



6015



6526



6026



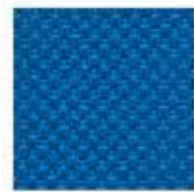
6598



6571



6071



6075

# Specification

SPECIFICATION	STANDARD	TOLERANCE	ACHEIVED
COMPOSITION	100% POLYESTER		
ENVIRONMENTAL	OEKO-TEX Standard 100		
ABRASION	ISO 12947-2 (Martindale)	± 10%	80,000
WIDTH (cm)	—	± 2%	140
WEIGHT (g/lm)	EN 12127	± 5%	560
PILLING (2000 rubs)	ISO 12945-2	from 4 to 5	5
LIGHT FASTNESS (blue scale)	ISO 105-B02 (Xoenotest)	from 5 to 8	6
FASTNESS TO RUBBING	ISO 105-X12 (Crockmeter)	from 4 to 5	4/5 (grey scale)

Slight colour variation within commercial tolerance may occur between batches due to properties of textiles

Digital fabric image may not be colour accurate. Always request fabric sample before ordering

## FLAMMABILITY

EN 1021-1&2 Cigarette & Match  
 BS 7176 Low Hazard  
 BS 5852 Ignition source/ Crib 5  
 BS 7176 Medium Hazard  
 UNI 9175 Class 1 IM  
 California TB117

Flammability performance is dependent upon the foam used

## CLEANING AND WASHING



inloom  
fabrics