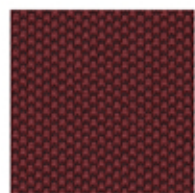
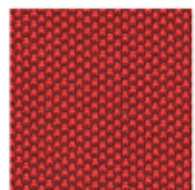


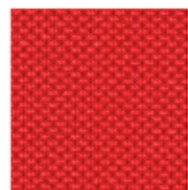
ONE



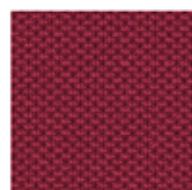
4503



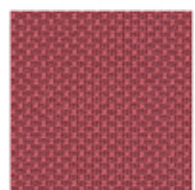
4528



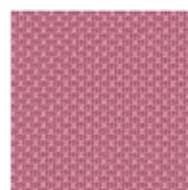
4028



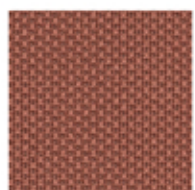
4021



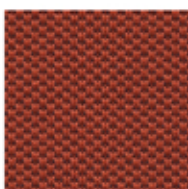
4079



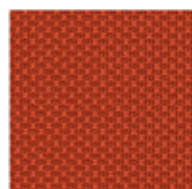
4067



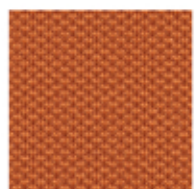
4037



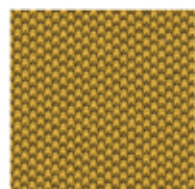
4566



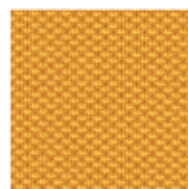
4066



4030



3530



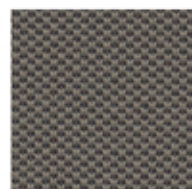
3008



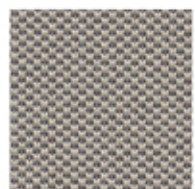
3007



2007



2519



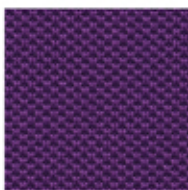
1506



1006

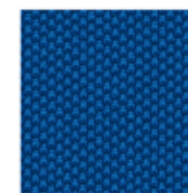


1001

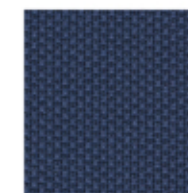


5503

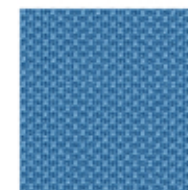
inloom



6515



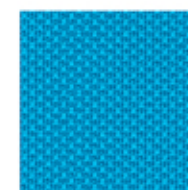
6017



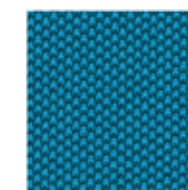
6024



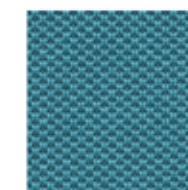
6512



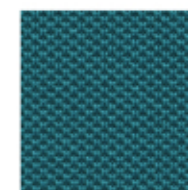
6091



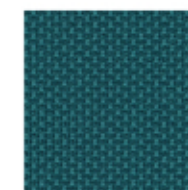
6591



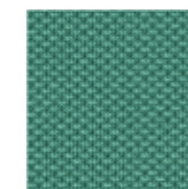
7504



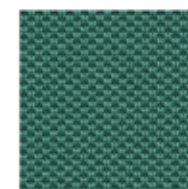
6555



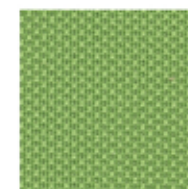
7033



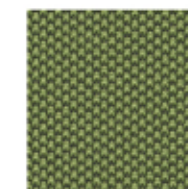
7026



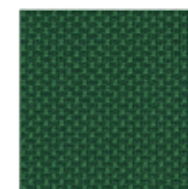
7526



7022



7521



7029



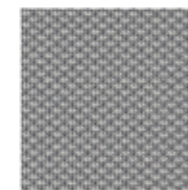
0001



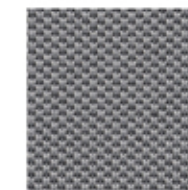
8004



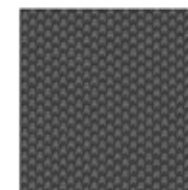
8504



8032



8532



8017



8033

ONE

Specification

SPECIFICATION	STANDARD	TOLERANCE	ACHEIVED
COMPOSITION	100% RECYCLED POLYESTER		
ENVIRONMENTAL	OEKO-TEX Standard 100	RECYCLED P.E.T BOTTLES	
ABRASION	ISO 12947-2 (Martindale)	± 10%	100,000
WIDTH (cm)	—	± 2%	150
WEIGHT (g/lm)	EN 12127	± 5%	525
PILLING (2000 rubs)	ISO 12945-2	from 4 to 5	5
LIGHT FASTNESS (blue scale)	ISO 105-B02 (Xoenotest)	from 5 to 8	6
FASTNESS TO RUBBING	ISO 105-X12 (Crockmeter)	from 4 to 5	4/5 (grey scale)

Slight colour variation within commercial tolerance may occur between batches due to properties of textiles

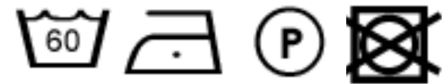
Digital fabric image may not be colour accurate. Always request fabric sample before ordering

FLAMMABILITY

EN 1021-1&2 Cigarette & Match
 BS 7176 Low Hazard
 BS 5852 Ignition source/ Crib 5
 BS 7176 Medium Hazard
 UNI 9175 Class 1 IM
 California TB117

Flammability performance is dependent upon the foam used

CLEANING AND WASHING



inloom

fabrics