



2022



1014



1003



1006



4037



3019



4022



4021



5004



8033



8019



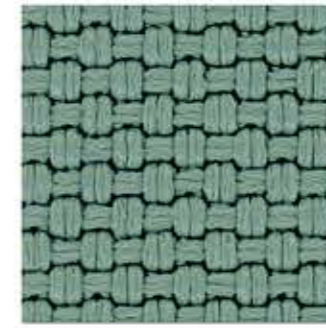
8009



8001



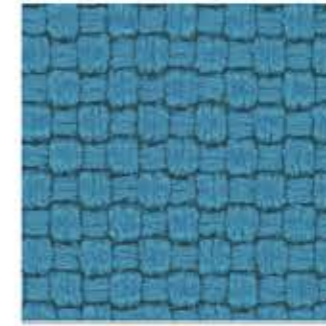
7029



7030



6075



6043



6030



6098

# Specification

SPECIFICATION	STANDARD	TOLERANCE	ACHEIVED
COMPOSITION	100% TREVIRA CS POLYESTER		
ENVIRONMENTAL	OEKO-TEX Standard 100		
ABRASION	ISO 12947-2 (Martindale)	± 10%	120,000
WIDTH (cm)	—	± 2%	140
WEIGHT (g/lm)	EN 12127	± 5%	1,290
PILLING (2000 rubs)	ISO 12945-2	from 4 to 5	5
LIGHT FASTNESS (blue scale)	ISO 105-B02 (Xoenotest)	from 5 to 8	6
FASTNESS TO RUBBING	ISO 105-X12 (Crockmeter)	from 4 to 5	4/5 (grey scale)

Slight colour variation within commercial tolerance may occur between batches due to properties of textiles

Digital fabric image may not be colour accurate. Always request fabric sample before ordering

## FLAMMABILITY

EN 1021-1&2 Cigarette & Match  
BS 7176 Low Hazard

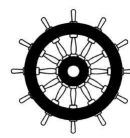
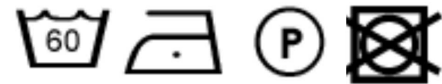
UNI 9174 - 8456 Class C1  
UNI 9175 Class 1 IM  
DIN 4102 Class B1  
NF P 92501-7 Class M1  
NF D 60013 Class AM18

California TB117

IMO Part 8 Upholstery

Flammability performance is dependent upon the foam used

## CLEANING AND WASHING



# inloom

fabrics