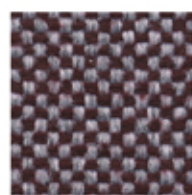
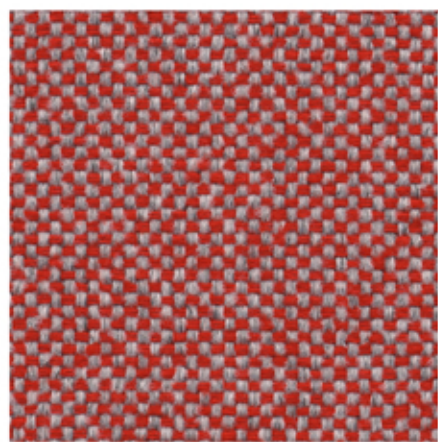
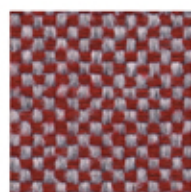


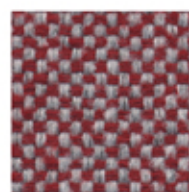
MILANO



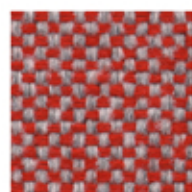
9407



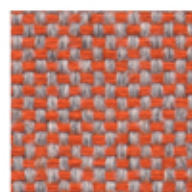
9418



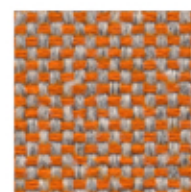
9494



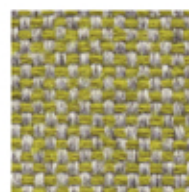
9427



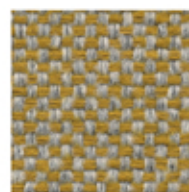
9451



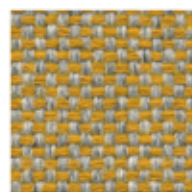
9430



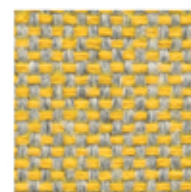
9734



9330



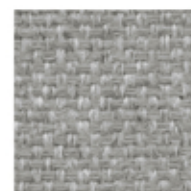
9319



9390



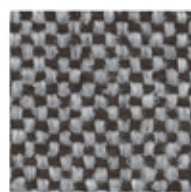
9108



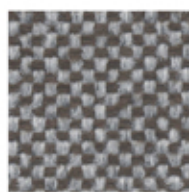
9106



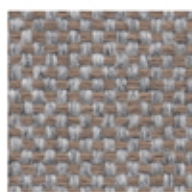
9101



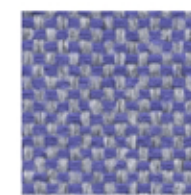
9210



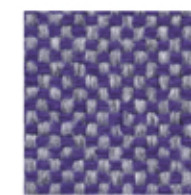
9212



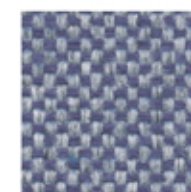
9224



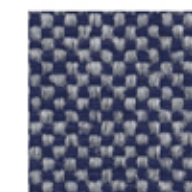
9629



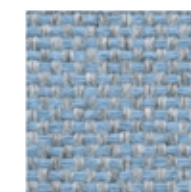
9506



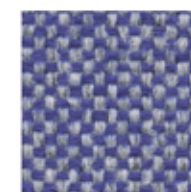
9613



9698



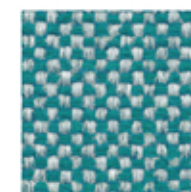
9656



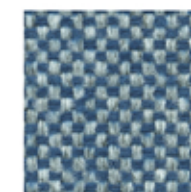
9695



9607



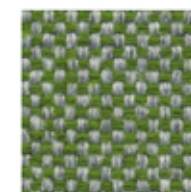
9691



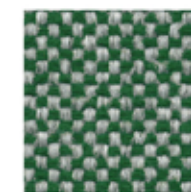
9614



9709



9725



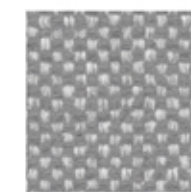
9702



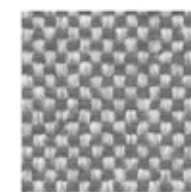
9000



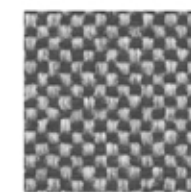
9801



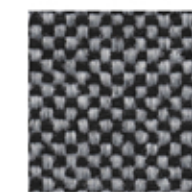
9878



9809



9817



9833

MILANO

# Specification

SPECIFICATION	STANDARD	TOLERANCE	ACHEIVED
COMPOSITION	100% TREVIRA CS POLYESTER		
ENVIRONMENTAL	OEKO-TEX Standard 100		
ABRASION	ISO 12947-2 (Martindale)	± 10%	80,000
WIDTH (cm)	—	± 2%	140
WEIGHT (g/lm)	EN 12127	± 5%	525
PILLING (2000 rubs)	ISO 12945-2	from 4 to 5	5
LIGHT FASTNESS (blue scale)	ISO 105-B02 (Xoenotest)	from 5 to 8	6
FASTNESS TO RUBBING	ISO 105-X12 (Crockmeter)	from 4 to 5	4/5 (grey scale)

Slight colour variation within commercial tolerance may occur between batches due to properties of textiles

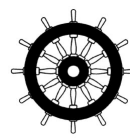
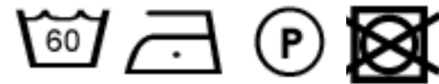
Digital fabric image may not be colour accurate. Always request fabric sample before ordering

## FLAMMABILITY

EN 1021-1&2 Cigarette & Match  
 BS 7176 Low Hazard  
 BS 5852 Ignition source/ Crib 5  
 BS 7176 Medium Hazard  
 EN 13773 Class 1  
 UNI 9174 - 8456 Class C1  
 UNI 9175 Class 1 IM  
 DIN 4102 Class B1  
 NF 92501-7 Class M1  
 NF D 60013 Class AM18  
 OENORM 3800-1 Class B1,Q1,TR1  
 California TB117  
 USA NFPA 701  
 USA NFPA 260  
 IMO Part 8 Upholstery

Flammability performance is dependent upon the foam used

## CLEANING AND WASHING



inloom  
fabrics