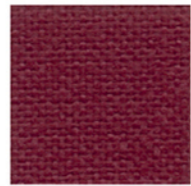
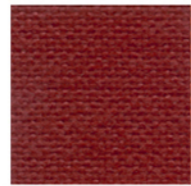


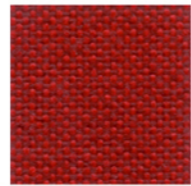
JET



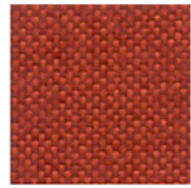
4017



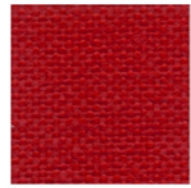
4018



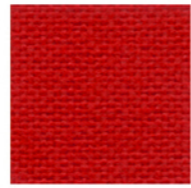
9401



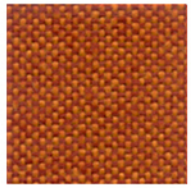
9402



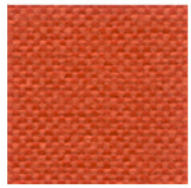
4028



4027



9404



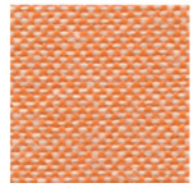
9403



4051



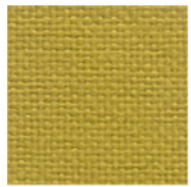
3036



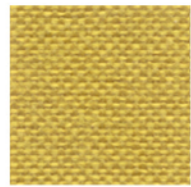
9301



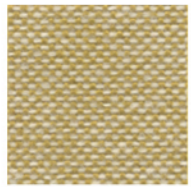
3030



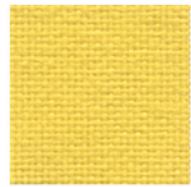
3019



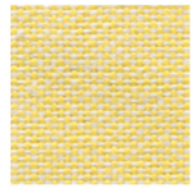
9304



9305



3090



9302



9219



1006



9110



1001



9108



9109



2024



0001



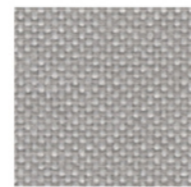
2010



2012



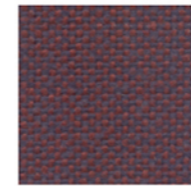
8001



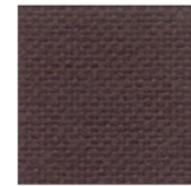
9803



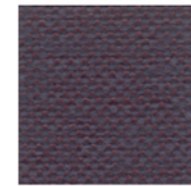
inloom



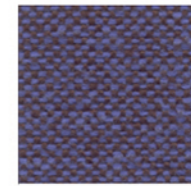
9501



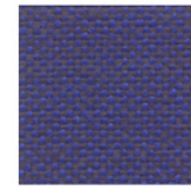
4007



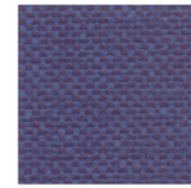
9607



9606



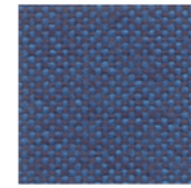
9605



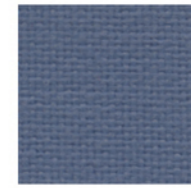
9602



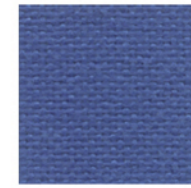
6098



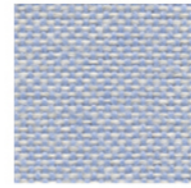
9603



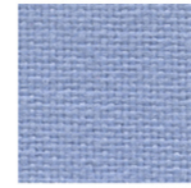
6013



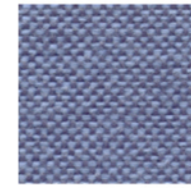
6095



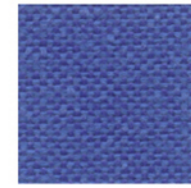
9600



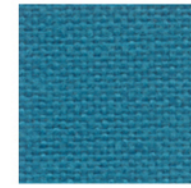
6056



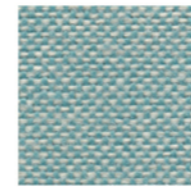
9601



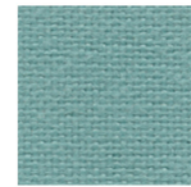
9604



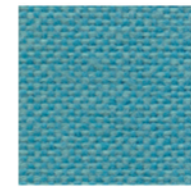
6014



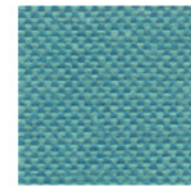
9610



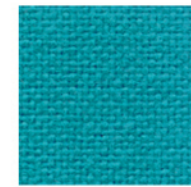
6007



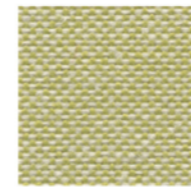
9609



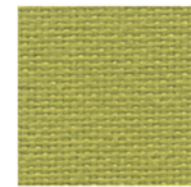
9608



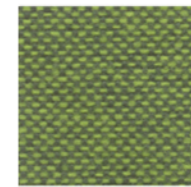
6091



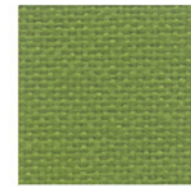
9701



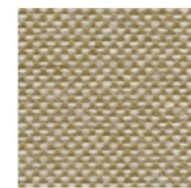
7041



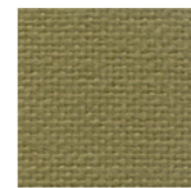
9702



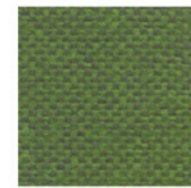
7025



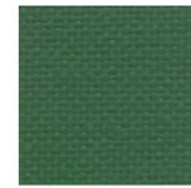
9703



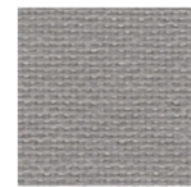
7034



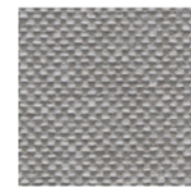
9704



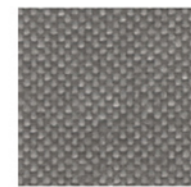
7014



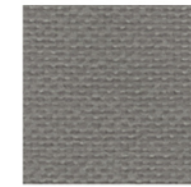
8078



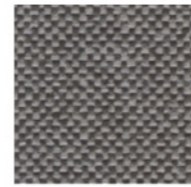
9804



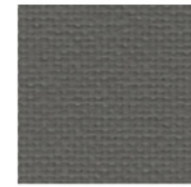
9805



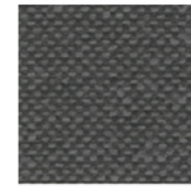
8009



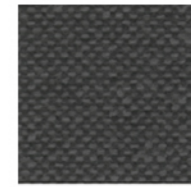
9294



8017



9281



9806



8033

JET

Specification

SPECIFICATION	STANDARD	TOLERANCE	ACHEIVED
COMPOSITION	100% TREVIRA CS POLYESTER		
ENVIRONMENTAL	OEKO-TEX Standard 100	EU ECOLABEL	
ABRASION	ISO 12947-2 (Martindale)	± 10%	65,000
WIDTH (cm)	—	± 2%	140
WEIGHT (g/lm)	EN 12127	± 5%	365
PILLING (2000 rubs)	ISO 12945-2	from 4 to 5	5
LIGHT FASTNESS (blue scale)	ISO 105-B02 (Xoenotest)	from 5 to 8	6
FASTNESS TO RUBBING	ISO 105-X12 (Crockmeter)	from 4 to 5	4/5 (grey scale)

Slight colour variation within commercial tolerance may occur between batches due to properties of textiles

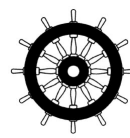
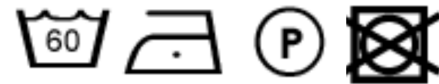
Digital fabric image may not be colour accurate. Always request fabric sample before ordering

FLAMMABILITY

EN 1021-1&2 Cigarette & Match
 BS 7176 Low Hazard
 BS 5852 Ignition source/ Crib 5
 BS 7176 Medium Hazard
 EN 13773 Class 1
 UNI 9174 - 8456 Class C1
 UNI 9175 Class 1 IM
 DIN 4102 Class B1
 NF 92501-7 Class M1
 NF D 60013 Class AM18
 OENORM 3800-1 Class B1,Q1,TR1
 California TB117
 USA NFPA 701
 USA NFPA 260
 IMO Part 8 Upholstery

Flammability performance is dependent upon the foam used

CLEANING AND WASHING



inloom

fabrics