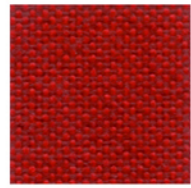
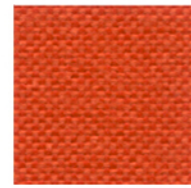


4018



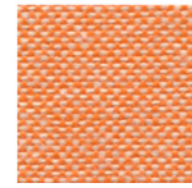
9401



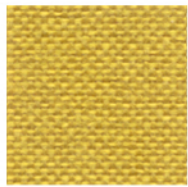
9403



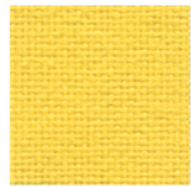
4051



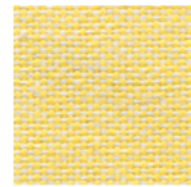
9301



9304



3090



9302



1006



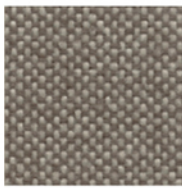
9110



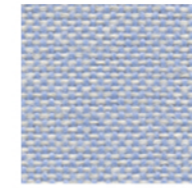
1001



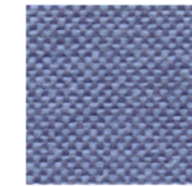
2012



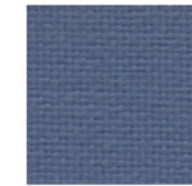
9109



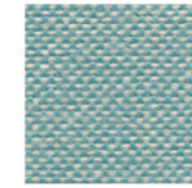
9600



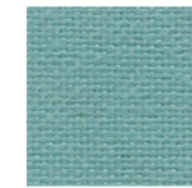
9601



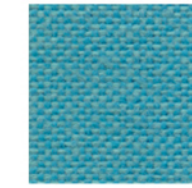
6013



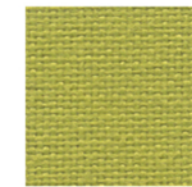
9610



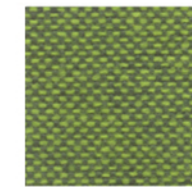
6007



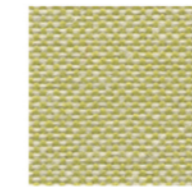
9609



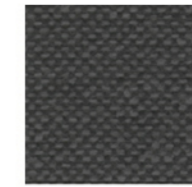
7041



9702



9701



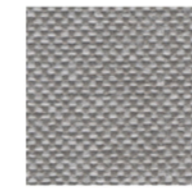
9806



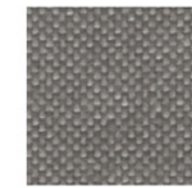
8033



8001



9804



9805



Silver ions make the fabric permanently flame retardant and antimicrobial without additional finishing agent.  
 Inhibits microbial formation of odours in/on the fabric.  
 Inhibits growth of bacteria in/on the fabric.  
 It's compatible with skin.  
 Contributes towards improving cleanliness and freshness  
 Easy care, low crease, dimensionally stable.  
 Short wash cycles at low temperatures save water, detergent and energy, suitable for industrial laundering.

# Specification

SPECIFICATION	STANDARD	TOLERANCE	ACHEIVED
COMPOSITION	100% TREVIRA CS BIOACTIVE POLYESTER		
ENVIRONMENTAL	OEKO-TEX Standard 100		
ABRASION	ISO 12947-2 (Martindale)	± 10%	65,000
WIDTH (cm)	—	± 2%	140
WEIGHT (g/lm)	EN 12127	± 5%	365
PILLING (2000 rubs)	ISO 12945-2	from 4 to 5	5
LIGHT FASTNESS (blue scale)	ISO 105-B02 (Xoenotest)	from 5 to 8	6
FASTNESS TO RUBBING	ISO 105-X12 (Crockmeter)	from 4 to 5	4/5 (grey scale)

Slight colour variation within commercial tolerance may occur between batches due to properties of textiles

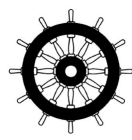
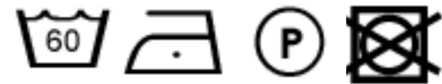
Digital fabric image may not be colour accurate. Always request fabric sample before ordering

## FLAMMABILITY

EN 1021-1&2 Cigarette & Match  
 BS 7176 Low Hazard  
 BS 5852 Ignition source/ Crib 5  
 BS 7176 Medium Hazard  
 EN 13773 Class 1  
 UNI 9174 - 8456 Class C1  
 UNI 9175 Class 1 IM  
 DIN 4102 Class B1  
 NF 92501-7 Class M1  
 NF D 60013 Class AM18  
 OENORM 3800-1 Class B1,Q1,TR1  
 California TB117  
 USA NFPA 701  
 USA NFPA 260  
 IMO Part 8 Upholstery

Flammability performance is dependent upon the foam used

## CLEANING AND WASHING



inloom  
fabrics