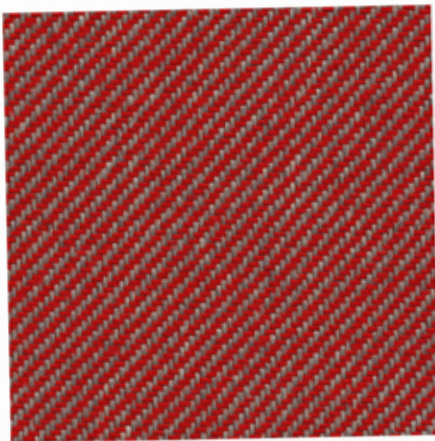
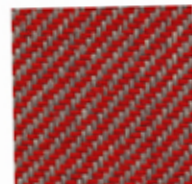


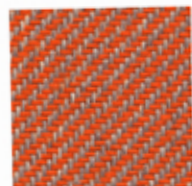
JEANS



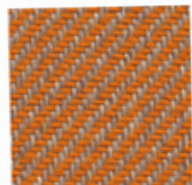
9417



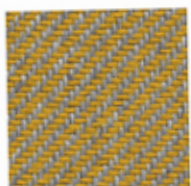
9427



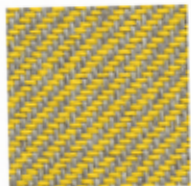
9488



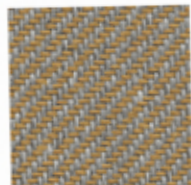
9430



9320



9390



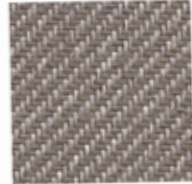
9214



9212



9217



9141



9110



9125



9504

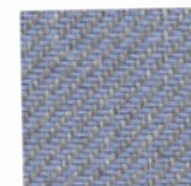


9515

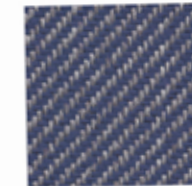
inloom



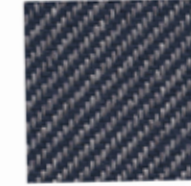
9617



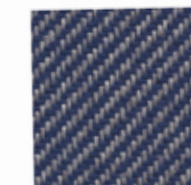
9656



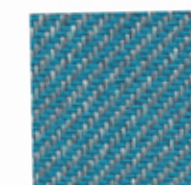
9616



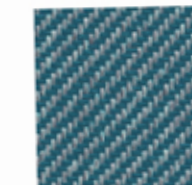
9679



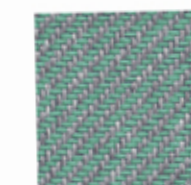
9680



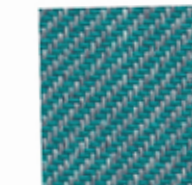
9607



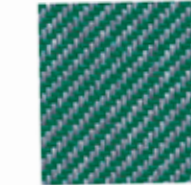
9631



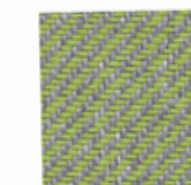
9726



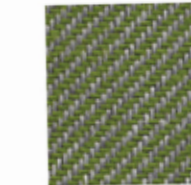
9637



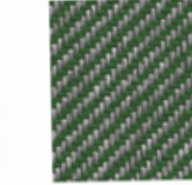
9708



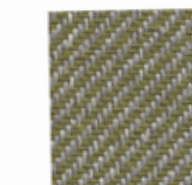
9741



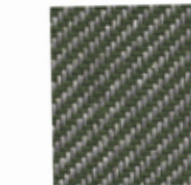
9753



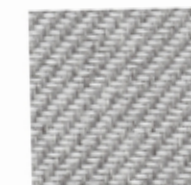
9736



9734



9720



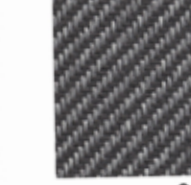
9000



9843



9807



9810



9833

JEANS

# Specification

SPECIFICATION	STANDARD	TOLERANCE	ACHEIVED
COMPOSITION	100% TREVIRA CS POLYESTER		
ENVIRONMENTAL	OEKO-TEX Standard 100		
ABRASION	ISO 12947-2 (Martindale)	± 10%	75,000
WIDTH (cm)	—	± 2%	140
WEIGHT (g/lm)	EN 12127	± 5%	380
PILLING (2000 rubs)	ISO 12945-2	from 4 to 5	5
LIGHT FASTNESS (blue scale)	ISO 105-B02 (Xoenotest)	from 5 to 8	6
FASTNESS TO RUBBING	ISO 105-X12 (Crockmeter)	from 4 to 5	4/5 (grey scale)

Slight colour variation within commercial tolerance may occur between batches due to properties of textiles

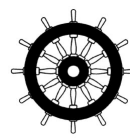
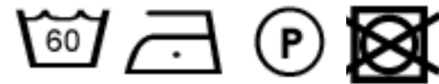
Digital fabric image may not be colour accurate. Always request fabric sample before ordering

## FLAMMABILITY

EN 1021-1&2 Cigarette & Match  
 BS 7176 Low Hazard  
 BS 5852 Ignition source/ Crib 5  
 BS 7176 Medium Hazard  
 EN 13773 Class 1  
 UNI 9174 - 8456 Class C1  
 UNI 9175 Class 1 IM  
 DIN 4102 Class B1  
 NF 92501-7 Class M1  
 NF D 60013 Class AM18  
 OENORM 3800-1 Class B1,Q1,TR1  
 California TB117  
 USA NFPA 701  
 USA NFPA 260  
 IMO Part 8 Upholstery

Flammability performance is dependent upon the foam used

## CLEANING AND WASHING



inloom  
fabrics