

HOW TO SEW KNITTED FABRICS

Each kind of textile requires different tools to be worked on. The two main families when dealing with fabrics are:

- woven
- knitted

Differently from conventional woven textiles, the structure of **knitted fabrics** allows for a better stretch but also requires a few precautions when sewing.

THE NEEDLE

Universal needles may damage knitted textiles by piercing the yarns, due to their pointy tip.

A **ballpoint needle** has a rounded tip, which allows the needle to move between the yarns without damaging them. We always recommend the use of this kind of needles.



**universal
needle**



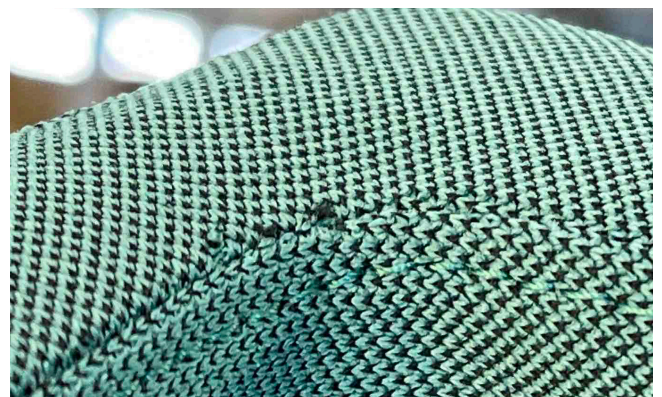
**ballpoint
needle**

FURTHER RECOMMENDATIONS

Always check the needles for damages and replace them accordingly.

If the needle is damaged, it is more likely to cause holes in the textile.

The holes around the seam will become visible as soon as the textile is tensioned.



SUPPORT

For more information, feel free to contact us:

phone **01484 613237**

e-mail enquiries@inloomfabrics.com