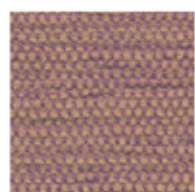
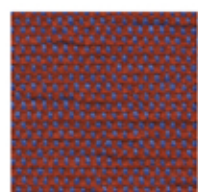
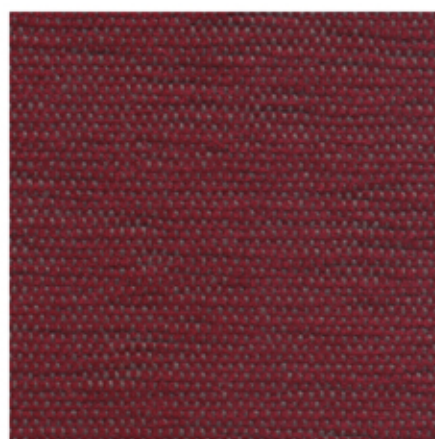


CORTE

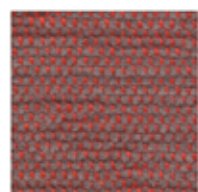


9412

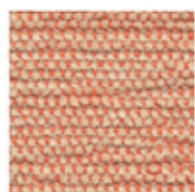
9515



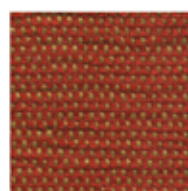
9407



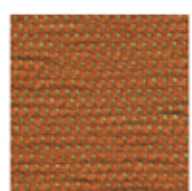
9304



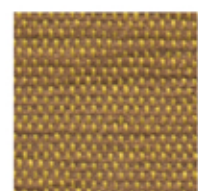
9312



9443



9343



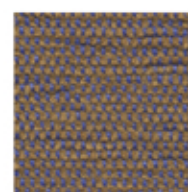
9390



9225



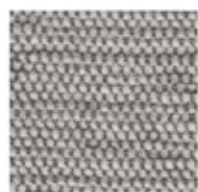
9216



9212



9217



9210

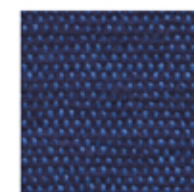


9104

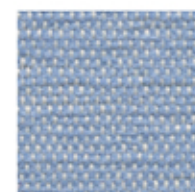
inloom



9617



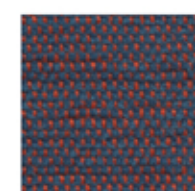
9612



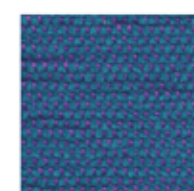
9625



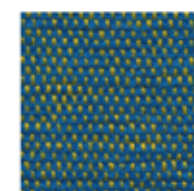
9607



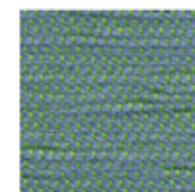
9604



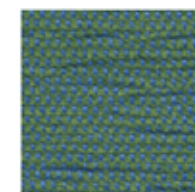
9615



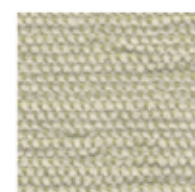
9731



9742



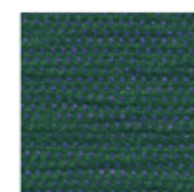
9712



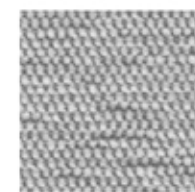
9743



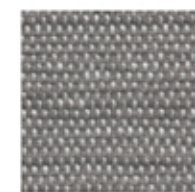
9717



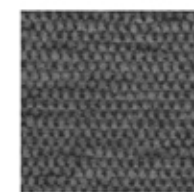
9715



9807



9825



9806



9816

CORTE

Specification

SPECIFICATION	STANDARD	TOLERANCE	ACHEIVED
COMPOSITION	100% TREVIRA CS POLYESTER		
ENVIRONMENTAL	OEKO-TEX Standard 100	EU ECO LABEL	
ABRASION	ISO 12947-2 (Martindale)	± 10%	50,000
WIDTH (cm)	—	± 2%	140
WEIGHT (g/lm)	EN 12127	± 5%	520
PILLING (2000 rubs)	ISO 12945-2	from 4 to 5	5
LIGHT FASTNESS (blue scale)	ISO 105-B02 (Xoenotest)	from 5 to 8	6
FASTNESS TO RUBBING	ISO 105-X12 (Crockmeter)	from 4 to 5	4/5 (grey scale)

Slight colour variation within commercial tolerance may occur between batches due to properties of textiles

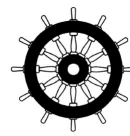
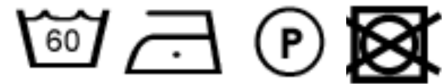
Digital fabric image may not be colour accurate. Always request fabric sample before ordering

FLAMMABILITY

EN 1021-1&2 Cigarette & Match
 BS 7176 Low Hazard
 BS 5852 Ignition source/ Crib 5
 BS 7176 Medium Hazard
 EN 13773 Class 1
 UNI 9174 - 8456 Class C1
 UNI 9175 Class 1 IM
 DIN 4102 Class B1
 NF 92501-7 Class M1
 NF D 60013 Class AM18
 OENORM 3800-1 Class B1,Q1,TR1
 California TB117
 USA NFPA 701
 USA NFPA 260
 IMO Part 8 Upholstery

Flammability performance is dependent upon the foam used

CLEANING AND WASHING



inloom

fabrics