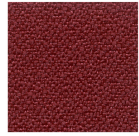
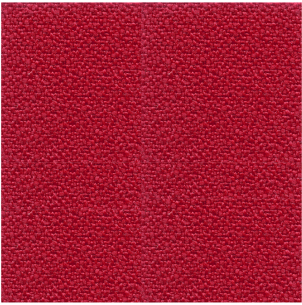
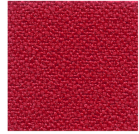


inloom

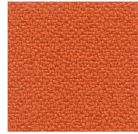
BONDAI 170



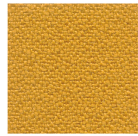
4707



4711



3712



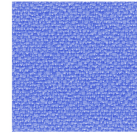
3705



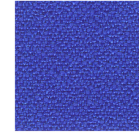
1708



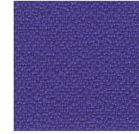
1705



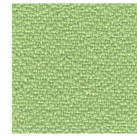
6706



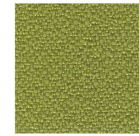
6771



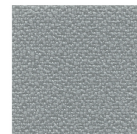
6715



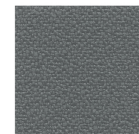
7732



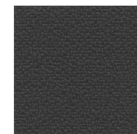
7721



8778



8710



8733

BONDAI 170

# Specification

SPECIFICATION	STANDARD	TOLERANCE	ACHEIVED
COMPOSITION	100% POLYESTER		
ENVIRONMENTAL	OEKO-TEX Standard 100		
ABRASION	ISO 12947-2 (Martindale)	± 10%	150,000
WIDTH (cm)	—	± 2%	170
WEIGHT (g/lm)	EN 12127	± 5%	425
PILLING (2000 rubs)	ISO 12945-2	from 4 to 5	5
LIGHT FASTNESS (blue scale)	ISO 105-B02 (Xoenotest)	from 5 to 8	6
FASTNESS TO RUBBING	ISO 105-X12 (Crockmeter)	from 4 to 5	4/5 (grey scale)

Slight colour variation within commercial tolerance may occur between batches due to properties of textiles

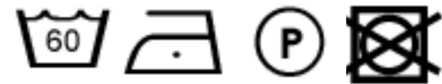
Digital fabric image may not be colour accurate. Always request fabric sample before ordering

## FLAMMABILITY

EN 13501-1  
 EN 1021-1&2 Cigarette & Match  
 BS 7176 Low Hazard  
 BS 5852 Ignition source/ Crib 5  
 BS 7176 Medium Hazard  
 EN 13773 Class 1  
 BS 476 part 7 class 1  
 UNI 9175 Class 1 IM  
 NF 92501-7 Class M1 with treatment if requested  
 California TB117

Flammability performance is dependent upon the foam used

## CLEANING AND WASHING



inloom  
fabrics