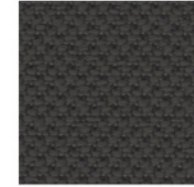
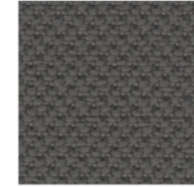
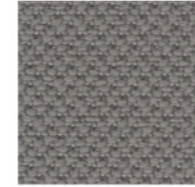
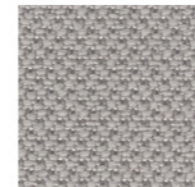
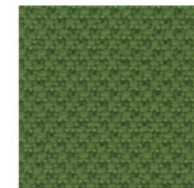
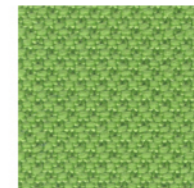
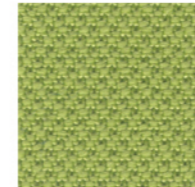
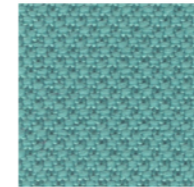
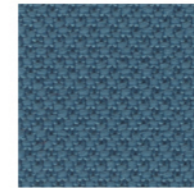
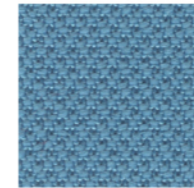
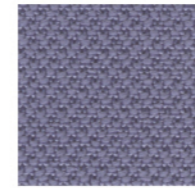
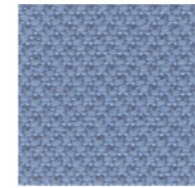
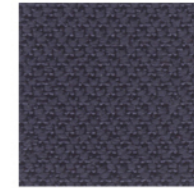
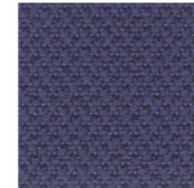
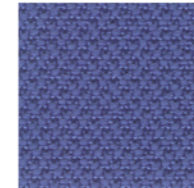
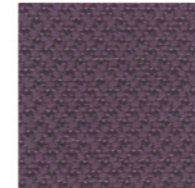
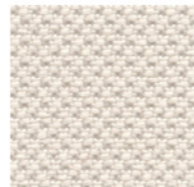
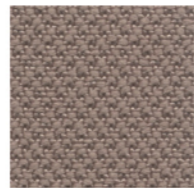
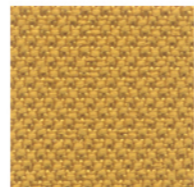
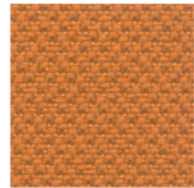
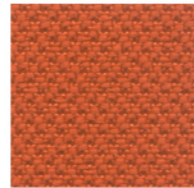
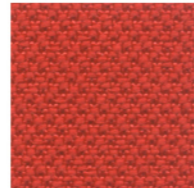
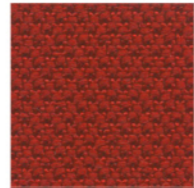
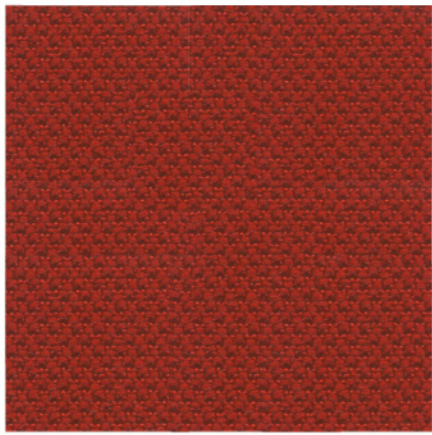


ALBA



inloom

4007

4027

4004

4030

3005

2036

2005

1006

1011

5004

6005

6026

6071

6080

6098

6007

6031

7026

7011

7013

7029

8078

8003

8010

8033

ALBA

# Specification

SPECIFICATION	STANDARD	TOLERANCE	ACHEIVED
COMPOSITION	100% POLYESTER		
ENVIRONMENTAL	OEKO-TEX Standard 100		
ABRASION	ISO 12947-2 (Martindale)	± 10%	100,000
WIDTH (cm)	—	± 2%	140
WEIGHT (g/lm)	EN 12127	± 5%	450
PILLING (2000 rubs)	ISO 12945-2	from 4 to 5	5
LIGHT FASTNESS (blue scale)	ISO 105-B02 (Xoenotest)	from 5 to 8	6
FASTNESS TO RUBBING	ISO 105-X12 (Crockmeter)	from 4 to 5	4/5 (grey scale)

Slight colour variation within commercial tolerance may occur between batches due to properties of textiles

Digital fabric image may not be colour accurate. Always request fabric sample before ordering

## FLAMMABILITY

EN 1021-1&2 Cigarette & Match  
BS 7176 Low Hazard  
BS 5852 Ignition source/ Crib 5  
BS 7176 Medium Hazard  
UNI 9175 Class 1 IM  
California TB117

Flammability performance is dependent upon the foam used

# inloom

fabrics

## CLEANING AND WASHING

