



FLOCKED
OLEFIN PG. 9



DYE SUB CLASSIC, PG. 24



FAUX COCO, PG. 13



2022 PROMO MATTING CATALOG

INTRODUCTION

Promotional Matting by the Numbers	3
Floor Mats 101	4
Mat Selector Guide: Choosing the Right Mat	5
General Information & Policies	8

PRODUCTS

Safety & Hygiene Floor Mat Line	7
Flocked Plush Olefin	9
Flocked Diamondback	10
Flocked Camelot	11
Flocked Coco	12
Flocked Faux Coco	13
Direct Print Front Runner	14
Direct Print Fusion	15
Direct Print Eversoft	16
Direct Print Fatigue Shield	17
Direct Print Duramat	18
Screen Print Camelot	19
HD Nylon Dye Rubber	20
Nylon Dye Rubber	21
Nylon Dye Vinyl	22
Molded Floor Mats	23
Dye Sub Classic Latex	24
Dye Sub Classic Rubber	25
Defender Inlay	26
Dirtstopper	27
Printed Bar Mats	28
Molded Bar Mats	29

COLORS

Flock Imprint Colors	30
Flocked Mat Colors	30
Nylon Dye Colors	31
Defender Base and inlay colors	31
Front Runner Colors	31
Fusion Colors	31





PROMOTIONAL MATTING

BY THE NUMBERS

IMPACT



THE AVERAGE COST PER IMPRESSION OF A PROMOTIONAL FLOOR MAT IS 1/10 OF A PENNY.



AVERAGE INCREASE IN SALES OF RETAIL PRODUCTS PROMOTED WITH FLOOR MATS.



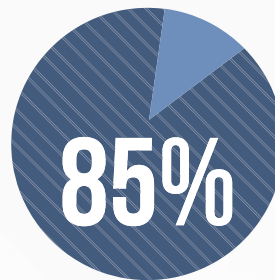
OF RETAIL SHOPPERS STOP AND NOTICE FLOOR GRAPHICS & MATS.

SAFETY



1 MILLION

THE NUMBER OF HOSPITAL VISITS FROM SLIP AND FALL ACCIDENTS PER YEAR.



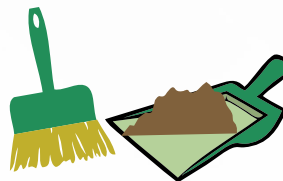
OF WORKERS COMPENSATION CLAIMS ARE FROM SLIPS AND FALLS ON WET FLOORS.

SAVINGS



\$620

AVERAGE YEARLY SAVINGS FROM PURCHASING 5 FLOOR MATS INSTEAD OF RENTING.



\$750

AVERAGE COST TO REMOVE A POUND OF DIRT FROM A RETAIL OR COMMERCIAL BUILDING.

SOURCES: POINT OF PURCHASE ADVERTISING INSTITUTE, NATIONAL FLOOR SAFETY INSTITUTE, INDUSTRIAL SAFETY & OCCUPATIONAL HEALTH MARKETS, 5TH ED.

Mat Selector Guide: Choosing the Right Mat

Where will the mat be placed?	What type of art will be printed?	How much foot traffic is expected?	How & where will the mat be used?
<ul style="list-style-type: none"> • Indoor • Outdoor • Covered Outdoor • Counter 	<ul style="list-style-type: none"> • Spot Color • 4-Color Process (photographic) 	<ul style="list-style-type: none"> • Light • Moderate • Heavy 	<ul style="list-style-type: none"> • Entrance • Display/POP • Anti-Fatigue

Product	Page #	Traffic	In-door	Out-door	Covered Outdoor	Counter	Entrance	Display/POP	Anti-Fatigue	Imprint Process
DP Eversoft	7	Light	✓						✓	4-Color
DP Fatigue Shield	8	Moderate	✓						✓	4-Color
DP Front Runner	9	Heavy	✓	✓	✓		✓			4-Color
DP Fusion	10	Heavy	✓	✓	✓		✓			4-Color
DP Duramat Nitrile	11	Moderate	✓			✓		✓		4-Color
Flocked Olefin	12	Moderate	✓		✓		✓	✓		Spot
Flocked Camelot	13	Moderate	✓		✓		✓	✓		Spot
Flocked Diamondback	14	Moderate	✓		✓		✓			Spot
Flocked Faux Coco	15	Moderate	✓		✓		✓			Spot
Flocked Natural Coco	16	Heavy	✓		✓		✓			Spot
Nylon Dye Rubber	17	Heavy	✓		✓		✓	✓		4-Color
Nylon Dye Vinyl	18	Moderate	✓		✓		✓	✓		4-Color
HD Nylon Dye Rubber	19	Heavy	✓		✓		✓			4-Color
Defender Inlay	20	Heavy	✓	✓	✓		✓			Spot
Dirt Stopper	21	Heavy	✓	✓			✓			4-Color
Molded Floor Mats	22	Moderate	✓					✓		Spot
Molded Bar Mats	23	n/a				✓				Spot
Impression Bar Mats	26	n/a				✓				4-Color
Dye Sub Classic	24	Light	✓			✓		✓		4-Color
Screen Print Camelot	25	Light	✓		✓		✓			Spot
Printed Bar Mats	28	n/a				✓				4-Color

FLOOR MATS 101

Purchasing vs. Renting Floor

Most businesses are already using floor mats, although likely through a rental service. However, many businesses don't know they can purchase custom floor mats from



Top 3 Uses of Floor Mats

- 1. Residential** - Includes home builders, apartment complexes, real estate agents, and mortgage companies. Used at entrances for brand awareness and to keep floors clean and safe.
- 2. Spirits & Wine** - Mats placed at product displays, store entrances and at check out counters. Typically used strictly for advertising purposes but sometimes for function at entrances.
- 3. Commercial Buildings** - Includes banks, schools, hospitals, universities, etc. Here mats are used at entrances both outside and inside to keep floors clean and safe while reinforcing their name or logo.

Wherever Business Takes You



Our Safety & Hygiene line of mats has everything you need to encourage safe practices no matter where you are.



Safety & Hygiene Floor Mat Line



WELCOME FACE COVERING MAT

USES & BENEFITS

- Reinforce policy at entry.
- Ideal for any business entrance
- Easily cleaned.

STANDARD SIZES

Mat Size	Weight
2' x 3'	4 lbs.
3' x 5'	7 lbs.



STAND HERE & ARROW MAT

USES & BENEFITS

- Ideal for retail and grocery stores
- Durable, non-slip nitrile construction is re-positionable and last longer than floor decals.
- Easily wiped clean

STANDARD SIZES

Mat Size	Standard Print Area	Weight
12" x 12"	11" x 11"	3 lbs.
18" x 18"	17" x 17"	4 lbs.
12" Circle	11" Circle	3 lbs.
18" Circle	18" Circle	4 lbs.



KEEP CALM MAT

USES & BENEFITS

- Ideal for hotels, resorts, and office buildings.
- Easily cleaned.

STANDARD SIZES

Mat Size	Weight
3' x 5'	7 lbs.



PLEASE WASH HANDS MAT

USES & BENEFITS

- Ideal for office buildings, hotels, and resorts.
- Easily cleaned.

STANDARD SIZES

Mat Size	Weight
2' x 3'	4 lbs.

All mats have a 3-5% variance. Different designs, sizes and products can not be combined for higher quantity break pricing.



2022 PROMO MAT COLLECTION





FLOCKED PLUSH OLEFIN

ITEM# F206



SURFACE DETAIL

SIDE-VIEW DETAIL

FEATURES & BENEFITS

- Raised nylon flock spot color imprint
- Plush 16 oz. Olefin carpet
- Stain, mold and mildew resistant
- Backed with heavy-duty vinyl

MAT SPECS

- Overall Mat Thickness:** 3/8"
- Surface Material:** Plush Olefin fiber
- Face Weight:** 16 oz./sq. yd.
- Backing Material:** Non-Phthalate Vinyl (PVC)

STANDARD SIZES

Mat Size	Standard Print Area	Weight
18" x 27"	14" x 23"	3 lbs.
2' x 3'	20" x 32"	4 lbs.
3' x 4'	32" x 40"	9 lbs.
3' x 5'	32" x 40"	11 lbs.
4' x 6'	40" x 40"	17 lbs.

Custom Sizes Available

All mats have a 3-5% variance. Different designs, sizes and products can not be combined for higher quantity break pricing.

IMPRINT SPECS

- ✓ Recommended letter height: 3/4"
- ✓ Recommended line thickness: 3/16"
- ✓ 1-3 spot colors
- ✓ PMS color matching available (additional charge)
- ✓ Oversized imprints available (additional charge)

[Available Imprint Colors:](#)
[pg. 30](#)





FLOCKED DIAMONDBACK

ITEM# F209



SURFACE DETAIL



SIDE-VIEW DETAIL

FEATURES & BENEFITS

- Raised nylon flock spot color imprint
- 18 oz. Berber patterned PET blended carpet
- Multidirectional scraper mat
- Backed with heavy-duty vinyl

MAT SPECS

Overall Mat Thickness: 3/8"

Surface Material: Needle Punched Polyester/PET

Face Weight: 18 oz./sq. yd.

Backing Material: Non-Phthalate Vinyl (PVC)

STANDARD SIZES

Mat Size	Standard Print Area	Weight
18" x 27"	14" x 23"	4 lbs.
2' x 3'	20" x 32"	5 lbs.
3' x 4'	32" x 40"	10 lbs.
3' x 5'	32" x 40"	12 lbs.
4' x 6'	40" x 40"	19 lbs.

Custom Sizes Available

All mats have a 3-5% variance. Different designs, sizes and products can not be combined for higher quantity break pricing.

IMPRINT SPECS

- ✓ Recommended letter height: 1.25"
- ✓ Recommended line thickness: 1/4"
- ✓ 1-3 spot colors
- ✓ PMS color matching available (additional charge)
- ✓ Oversized imprints available (additional charge)

Available Imprint Colors:
[pg. 30](#)





FLOCKED CAMELOT

ITEM# F213



SURFACE DETAIL

SIDE-VIEW DETAIL

FEATURES & BENEFITS

- Raised nylon flock spot color imprint
- Low profile ribbed surface material
- Keeps floors clean and safe
- Backed with heavy-duty vinyl

MAT SPECS

- Overall Mat Thickness:** 3/8"
- Surface Material:** Blended PET/Polypropylene
- Face Weight:** 14 oz./sq. yd.
- Backing Material:** Non-Phthalate Vinyl (PVC)

STANDARD SIZES

Mat Size	Standard Print Area	Weight
18" x 27"	14" x 23"	3 lbs.
2' x 3'	20" x 32"	4 lbs.
3' x 4'	32" x 40"	9 lbs.
3' x 5'	32" x 40"	11 lbs.
4' x 6'	40" x 40"	17 lbs.

IMPRINT SPECS

- ✓ Recommended letter height: 3/4"
- ✓ Recommended line thickness: 3/16"
- ✓ 1-3 spot colors
- ✓ PMS color matching available (additional charge)
- ✓ Oversized imprints available (additional charge)

Custom Sizes Available

All mats have a 3-5% variance. Different designs, sizes and products can not be combined for higher quantity break pricing.

Available Imprint Colors:
[pg. 30](#)





FLOCKED NATURAL COCO

ITEM# F212



SURFACE DETAIL



SIDE-VIEW DETAIL



FEATURES & BENEFITS

- Raised nylon flock spot color imprint
- Natural coconut husk fiber construction
- Exceptional scraping action removes dirt
- Backed with heavy-duty vinyl

STANDARD SIZES

Size	Standard Print Area	Weight
18" x 30"	14" x 23"	5 lbs.
2' x 3'	20" x 32"	7 lbs.
3' x 4'	32" x 40"	11 lbs.
3' x 5'	32" x 40"	13 lbs.

Custom Sizes Available

All mats have a 3-5% variance. Different designs, sizes and products can not be combined for higher quantity break pricing. Limited availability.

MAT SPECS

Overall Mat Thickness: 1/2"

Surface Material: Natural Coconut Husk

Face Weight: 148 oz./sq. yd.

Backing Material: Non-Phthalate Vinyl (PVC)

IMPRINT SPECS

- ✓ Recommended letter height: 1.5"
- ✓ Recommended line thickness: 1/2"
- ✓ Not recommended for detailed logos
- ✓ 1-3 spot colors
- ✓ PMS color matching available (additional charge)
- ✓ Oversized imprints available (additional charge)

[Available Imprint Colors: pg. 30](#)



FLOCKED FAUX COCO

ITEM# F210



FEATURES & BENEFITS

- Raised nylon flock spot color imprint
- Made from shed-free, synthetic PET fibers
- Mold, mildew, and stain resistant
- Backed with heavy-duty vinyl

STANDARD SIZES

Mat Size	Standard Print Area	Weight
18" x 30"	14" x 23"	3 lbs.
2' x 3'	20" x 32"	5 lbs.
3' x 4'	32" x 40"	9 lbs.
3' x 5'	32" x 40"	11 lbs.
4' x 6'	40" x 40"	17 lbs.

Custom Sizes Available

All mats have a 3-5% variance. Different designs, sizes and products can not be combined for higher quantity break pricing.

MAT SPECS

Overall Mat Thickness: 3/8"

Surface Material: Polyester/PET

Face Weight: 22 oz./sq. yd.

Backing Material: Non-Phthalate Vinyl (PVC)

IMPRINT SPECS

- ✓ Recommended letter height: 1.25"
- ✓ Recommended line thickness: 1/4"
- ✓ 1-3 spot colors
- ✓ PMS color matching available (additional charge)
- ✓ Oversized imprints available (additional charge)

Available Imprint Colors:
[pg. 30](#)



DIRECT PRINT FRONT RUNNER

ITEM# DP205



SURFACE DETAIL



SIDE-VIEW DETAIL



FEATURES & BENEFITS

- State-of-the-art, 4 C/P UV-printing
- Excellent for removing dirt & debris
- Heavy duty all-weather mat
- Borderless construction for modern look

MAT SPECS

Overall Mat Thickness: 3/8"

Surface Material: PVC Coated Nylon

Face Weight: 22 oz./sq. yd.

Backing Material: Non-Phthalate Vinyl (PVC)

STANDARD SIZES

Mat Size	Standard Print Area	Weight
18" x 30"	14" x 23"	4 lbs.
2' x 3'	18" x 30"	5 lbs.
3' x 4'	30" x 40"	10 lbs.
3' x 5'	30" x 50"	12 lbs.
4' x 6'	40" x 60"	19 lbs.

Custom Sizes up to 4' Max Width Available.

All mats have a 3-5% variance. Different designs, sizes and products can not be combined for higher quantity break pricing.

IMPRINT SPECS

- ✓ Recommended letter height: 3/4"
- ✓ Recommended line thickness: 1/4"
- ✓ CMYK, UV-printed imprint
- ✓ Full bleed imprint available. Contact for pricing.

[Available Color Options: pg. 31](#)





DIRECT PRINT FUSION

ITEM# DP217



SURFACE DETAIL

SIDE-VIEW DETAIL

FEATURES & BENEFITS

- Rugged scraper mat
- Signature looped design
- Traps dirt, debris, and water
- Easy to clean
- **MOQ:** 50 pieces

STANDARD SIZES

Mat Size	Standard Print Area	Weight
18" x 27"	14" x 23"	4 lbs.
2' x 3'	18" x 30"	7 lbs.
3' x 4'	30" x 40"	15 lbs.
3' x 5'	30" x 50"	17 lbs.
4' x 6'	40" x 60"	26 lbs.

Custom Sizes up to 4' Max Width Available.

All mats have a 3-5% variance. Different designs, sizes and products can not be combined for higher quantity break pricing.

MAT SPECS

Overall Mat Thickness: 1/2"

Surface Material: Non-Phthalate PVC Vinyl Loops

Face Weight: 93 oz./sq. yd.

Backing Material: Non-Phthalate Vinyl (PVC)

IMPRINT SPECS

- ✓ Recommended letter height: 1"
- ✓ Recommended line thickness: 1/4"
- ✓ CMYK, UV-printed imprint
- ✓ Simple graphics without fine details or gradients recommended

[Available Color Options: pg. 31](#)



DIRECT PRINT EVERSOFT

ITEM# DP225



SURFACE DETAIL



SIDE-VIEW DETAIL



FEATURES & BENEFITS

- Soft vinyl foam for back, leg, and foot relief
- Tapered edges for increased safety
- State-of-the-art UV printing
- Cleans easily with warm water

STANDARD SIZES

Mat Size	Standard Print Area	Weight
18" x 27"	14" x 23"	3 lbs.
2' x 3'	18" x 30"	4.5 lbs.
3' x 4'	30" x 40"	9 lbs.
3' x 5'	30" x 50"	10.5 lbs.
4' x 6'	40" x 60"	18 lbs.

Custom Sizes Available.

All mats have a 3-5% variance. Different designs, sizes and products can not be combined for higher quantity break pricing.

MAT SPECS

Overall Mat Thickness: 3/8"

Surface Material: Expanded PVC

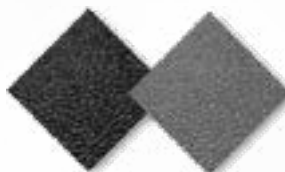
Face Weight: 75 oz./sq. yd.

Backing Material: Expanded PVC

IMPRINT SPECS

- ✓ Recommended letter height: 1/4"
- ✓ Recommended line thickness: 1/16"
- ✓ Photorealistic imprints

MAT COLORS

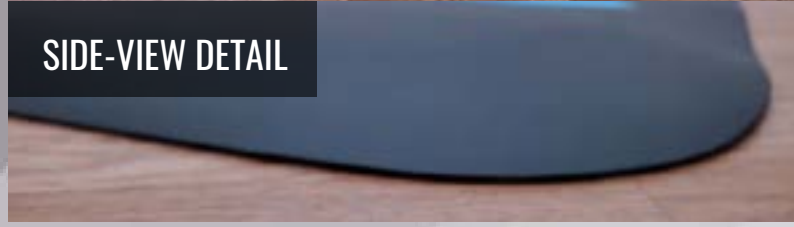


Black Gray



DIRECT PRINT FATIGUE SHIELD

ITEM# DP250



SURFACE DETAIL

SIDE-VIEW DETAIL

FEATURES & BENEFITS

- Hard top vinyl surface for enhanced durability
- Thick, foam base for enhanced comfort and relief
- Sloped edges for a safe transition
- Wipes clean

STANDARD SIZES

Mat Size	Standard Print Area	Weight
2' x 3'	18" x 30"	6 lbs.
3' x 4'	30" x 40"	12 lbs.
3' x 5'	30" x 50"	15 lbs.
4' x 6'	40" x 60"	24 lbs.

Custom Sizes up to 4' Max Width Available.

All mats have a 3-5% variance. Different designs, sizes and products can not be combined for higher quantity break pricing.

MAT SPECS

Overall Mat Thickness: 1/2"

Surface Material: Non-Phthalate Vinyl (PVC)

Face Weight: 144 oz./sq. yd.

Backing Material: Expanded PVC

IMPRINT SPECS

- ✓ Recommended letter height: 1/4"
- ✓ Recommended line thickness: 1/16"
- ✓ CMYK, UV-printed imprint

MAT COLORS



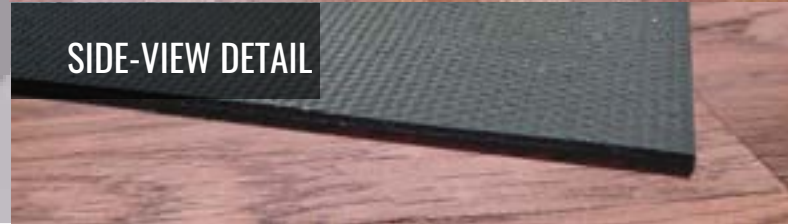
Black Gray





DIRECT PRINT DURAMAT

ITEM# DP140N



SURFACE DETAIL

SIDE-VIEW DETAIL

FEATURES & BENEFITS

- Flat smooth surface with light texture great for displaying photo quality graphics
- Durable, non-slip nitrile construction
- Light weight and easily wiped clean

MAT SPECS

Overall Mat Thickness: 1/16"

Surface Material: Nitrile Rubber Infused Vinyl

Face Weight: 94 oz./sq. yd.

Backing Material: Nitrile Rubber Infused Vinyl

STANDARD SIZES

Mat Size	Standard Print Area	Weight
18" x 27"	14" x 23"	3 lbs.
2' x 3'	18" x 30"	4 lbs.
3' x 4'	30" x 40"	8 lbs.
3' x 5'	30" x 50"	10 lbs.
4' x 6'	40" x 60"	16 lbs.

Custom Sizes Available

All mats have a 3-5% variance. Different designs, sizes and products can not be combined for higher quantity break pricing.

IMPRINT SPECS

- ✓ Recommended letter height: 1/4"
- ✓ Recommended line thickness: 1/16"
- ✓ CMYK, UV-printed imprint
- ✓ Full bleed imprint available (additional charge)





SCREEN PRINT CAMELOT

ITEM# S702



SURFACE DETAIL

SIDE-VIEW DETAIL

FEATURES & BENEFITS

- Ribbed polypropylene/PET surface
- Keeps floors clean and safe
- Backed with heavy-duty vinyl
- Cost-efficient imprint method
- **MOQ:** 100 pieces

STANDARD SIZES

Size	Maximum Print Area	Weight
18" x 24"	16" x 20"	2 lbs.
18" x 27"	16" x 20"	3 lbs.
2' x 3'	16" x 20"	4 lbs.

All mats have a 3-5% variance. Different designs, sizes and products can not be combined for higher quantity break pricing.

MAT SPECS

Overall Mat Thickness: 3/8"

Surface Material: Blended PET/Polypropylene

Face Weight: 14 oz./sq. yd.

Backing Material: Non-Phthalate Vinyl (PVC)

IMPRINT SPECS

- ✓ Recommended letter height: 3/4"
- ✓ Recommended line thickness: 3/16"
- ✓ 1-2 spot colors
- ✓ PMS color matching available



HIGH DEF NYLON DYE RUBBER

ITEM# J605R



SURFACE DETAIL

SIDE-VIEW DETAIL

FEATURES & BENEFITS

- High definition injection dye imprint process
- Mold, mildew, and stain resistant
- Non-slip rubber backing
- Washable

MAT SPECS

- Overall Mat Thickness:** 3/8"
- Surface Material:** Twisted Nylon Yarn
- Face Weight:** 20 oz./sq. yd.
- Backing Material:** Cleated Nitrile Rubber

STANDARD SIZES

Size	Finished Size	Standard Print Area	Weight
2' x 3'	23" x 34"	22" x 33"	5 lbs.
3' x 4'	34" x 43"	33" x 42"	10 lbs.
3' x 5'	34" x 55"	33" x 54"	13 lbs.
4' x 6'	43" x 66"	42" x 65"	20 lbs.

Custom Sizes to Nearest Foot Available

All mats have a 3-5% variance. Different designs, sizes and products can not be combined for higher quantity break pricing.

IMPRINT SPECS

- ✓ Recommended letter height: 1.5"
- ✓ Recommended line thickness: 1/8"
- ✓ Choose from 150 colors
- ✓ Up to 16 colors per mat
- ✓ Not recommended for large blocks of white or white backgrounds.

[Available Color Options:](#)
[pg. 31](#)





NYLON DYE RUBBER

ITEM# J603R



SURFACE DETAIL



SIDE-VIEW DETAIL

FEATURES & BENEFITS

- Standard injection dyed imprint process
- Mold, mildew, and stain resistant
- Non-slip rubber backing
- Washable

MAT SPECS

- Overall Mat Thickness:** 3/8"
- Surface Material:** Twisted Nylon Yarn
- Face Weight:** 20 oz./sq. yd.
- Backing Material:** Cleated Nitrile Rubber

STANDARD SIZES

Size	Finished Size	Standard Print Area	Weight
2' x 3'	23" x 34"	22" x 33"	5 lbs.
3' x 4'	34" x 43"	33" x 42"	10 lbs.
3' x 5'	34" x 55"	33" x 54"	12 lbs.
4' x 6'	43" x 66"	42" x 65"	20 lbs.

Custom Sizes to Nearest Foot Available

All mats have a 3-5% variance. Different designs, sizes and products can not be combined for higher quantity break pricing.

IMPRINT SPECS

- ✓ Recommended letter height: 2"
- ✓ Recommended line thickness: 1/2"
- ✓ Choose from 130 colors
- ✓ Up to 8 colors per mat
- ✓ Not recommended for large blocks of white or white backgrounds.

[Available Color Options:](#)
pg. 31





NYLON DYE VINYL

ITEM# J604V



SURFACE DETAIL



SIDE-VIEW DETAIL

FEATURES & BENEFITS

- Standard injection dyed imprint process
- 16 oz. plush nylon yarn
- Economical carpet-style option
- Backed with heavy-duty vinyl

MAT SPECS

Overall Mat Thickness: 3/8"

Surface Material: Plush Nylon Yarn

Face Weight: 16 oz./sq. yd.

Backing Material: Non-Phthalate Vinyl (PVC)

STANDARD SIZES

Size	Finished Size	Standard Print Area	Weight
2' x 3'	23" x 34"	22" x 33"	4 lbs.
3' x 4'	34" x 43"	33" x 42"	9 lbs.
3' x 5'	34" x 55"	33" x 54"	12 lbs.
4' x 6'	43" x 66"	42" x 65"	18 lbs.

Custom Sizes Available

All mats have a 3-5% variance. Different designs, sizes and products can not be combined for higher quantity break pricing.

IMPRINT SPECS

- ✓ Recommended letter height: 2"
- ✓ Recommended line thickness: 3/8"
- ✓ Choose from 130 colors
- ✓ Up to 8 colors per mat

[Available Color Options: pg. 31](#)





MOLDED FLOOR MATS

ITEM# M520



SURFACE DETAIL



SIDE-VIEW DETAIL



FEATURES & BENEFITS

- Constructed of durable PVC vinyl
- Non-absorbent and easily cleaned
- PMS color matching
- Completely custom molds
- **MOQ:** 25 pieces

STANDARD SIZES

Size	Maximum Print Area	Weight
2' x 3'	22.5" x 34.5"	9 lbs.
30" x 48"	28.5" x 46.5"	12.5 lbs.

Custom Sizes under 30" x 48" available.

All mats have a 3-5% variance. Different designs, sizes and products can not be combined for higher quantity break pricing.

A mold fee applies to intial orders of all molded mats.

MAT SPECS

Overall Mat Thickness: 1/4"

Material: Non-Phthalate Vinyl (PVC)

Face Weight: 216 oz./sq. yd.

IMPRINT SPECS

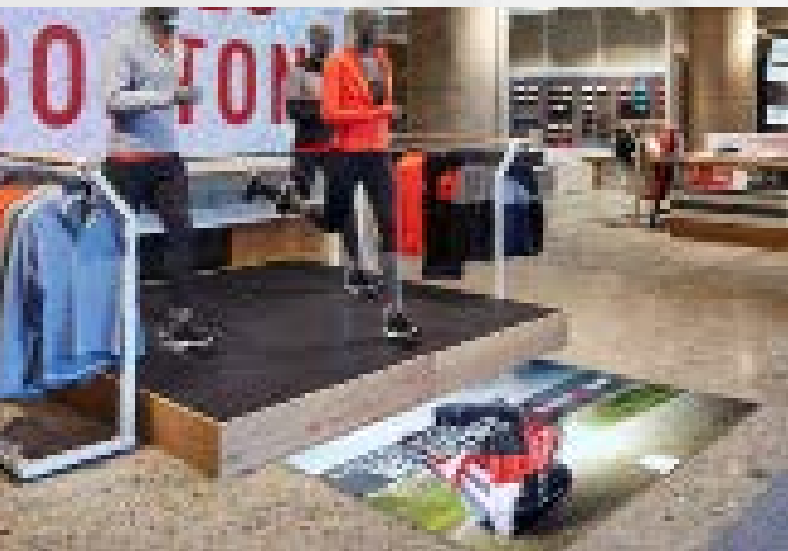
- ✓ Recommended letter height: 1/4"
- ✓ Recommended line thickness: 1/16"
- ✓ Spot-color imprint
- ✓ PMS color matching available





DYE SUB CLASSIC LATEX

ITEM# T801



SURFACE DETAIL



SIDE-VIEW DETAIL



FEATURES & BENEFITS

- Light weight, needle punched polyester surface
- Photographic quality images
- Latex backing

STANDARD SIZES

Size	Weight
11" x 17"	1.5 lbs.
16" x 20"	1.75 lbs.
18" x 24"	2 lbs.
18" x 27"	3 lbs.
2' x 3'	4 lbs.
3' x 4'	8 lbs.
3' x 5'	10 lbs.

Custom Sizes Available

All mats have a 3-5% variance. Different designs, sizes and products can not be combined for higher quantity break pricing.

MAT SPECS

Overall Mat Thickness: 1/16"

Material: Polyester

Face Weight: 11 oz./sq. yd.

Backing Material: Latex

IMPRINT SPECS

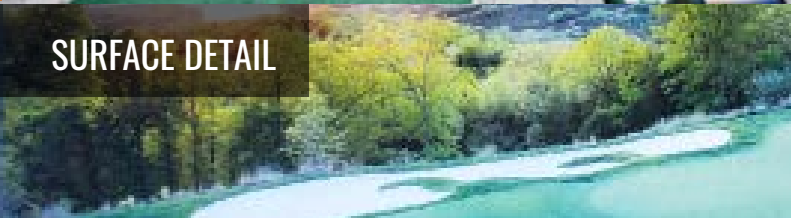
- ✓ Recommended letter height: 1/8"
- ✓ Recommended line thickness: 1/16"
- ✓ 4-color process
- ✓ Minimum artwork resolution: 175 dpi
- ✓ Full bleed available
- ✓ Solid color backgrounds are not recommended





DYE SUB CLASSIC RUBBER

ITEM# T801R



SURFACE DETAIL

FEATURES & BENEFITS

- Needle punched polyester surface
- Photographic quality images
- Black rubber border

MAT SPECS

- Overall Mat Thickness:** 1/10"
- Material:** Polyester
- Face Weight:** 8 oz./sq. yd.
- Backing Material & borders:** Rubber

STANDARD SIZES

Size	Weight
2' x 3'	4 lbs.
3' x 5'	6 lbs.
4' x 6'	8 lbs.
3' x 10'	10 lbs

IMPRINT SPECS

- ✓ Recommended letter height: 1/8"
- ✓ Recommended line thickness: 1/16"
- ✓ Choose from over 150 colors
- ✓ Minimum artwork resolution: 175 dpi
- ✓ Full bleed available
- ✓ Solid color backgrounds are not recommended

All mats have a 3-5% variance. Different designs, sizes and products can not be combined for higher quantity break pricing.





DEFENDER INLAY

ITEM# D214



SURFACE DETAIL

SIDE-VIEW DETAIL

With Nosing

ITEM# D214N

Beveled

ITEM# D214B

FEATURES & BENEFITS

- Berber pattern great for removing debris
- Inlaid graphics maintain functional surface that is stain & UV resistant
- Two edge options:
 - Vinyl nosing for smoother transition
 - Borderless beveled edges

STANDARD SIZES

Size	Finished Size	Standard Print Area	Weight
3' x 4'	3' x 4'	34" x 46"	16 lbs.
3' x 5'	3' x 5'	34" x 58"	20 lbs.
3' x 6'	3' x 6'	34" x 70"	23 lbs.
4' x 6'	4' x 6'	46" x 70"	31 lbs.

Custom Sizes Available

All mats have a 3-5% variance. Different designs, sizes and products can not be combined for higher quantity break pricing.

MAT SPECS

Overall Mat Thickness: 1/2"

Surface Material: Coarse Denier Polypropylene

Face Weight: 54 oz./sq. yd.

Backing Material: Composite Rubber

IMPRINT SPECS

- ✓ Recommended letter height: 3"
- ✓ Recommended line thickness: 1/2"
- ✓ Spot-color imprint
- ✓ Not recommended for detailed logos

[Available Color Options: pg. 31](#)





DIRTSTOPPER

ITEM# W130



SURFACE DETAIL

SIDE-VIEW DETAIL

FEATURES & BENEFITS

- Constructed of heavy-duty nitrile rubber
- Cleated surface for scraping dirt & debris
- Photographic quality imprint
- Non-absorbent

MAT SPECS

- Overall Mat Thickness:** 1/4"
- Material:** 100% Nitrile Rubber
- Face Weight:** 174 oz./sq. yd.
- Imprint:** Thermoplastic Vinyl

STANDARD SIZES

Size	Finished Size	Imprint Area	Weight
2' x 3'	23" x 34"	14" x 25"	8 lbs.
2.5' x 3'	29" x 34"	20" x 25"	10 lbs.
3' x 4'	34" x 43"	25" x 36"	16 lbs.
3' x 5'	34" x 55"	25" x 48"	20 lbs.
4' x 6'	45" x 67"	36" x 50"	31 lbs.

IMPRINT SPECS

- ✓ Recommended letter height: 1/2"
- ✓ Recommended line thickness: 1/16"
- ✓ 4-color process

All mats have a 3-5% variance. Different designs, sizes and products can not be combined for higher quantity break pricing.





PRINTED BAR MATS

ITEM#
PR550 Rail
PS1414 Service



SURFACE DETAIL

SIDE-VIEW DETAIL

FEATURES & BENEFITS

- Photographic quality logos
- Non-absorbent and easily cleaned
- **MOQ:** 20 pieces

MAT SPECS

- Overall Mat Thickness:** 138 mil
- Material:** Nitrile Rubber
- Face Weight:** N/A
- Imprint:** Thermoplastic vinyl

STANDARD SIZES

Size	Maximum Print Area	Weight
3.5" x 21"	3.5" x 21"	0.47 lbs.
14" x 14"	14" x 14"	1.33 lbs.

IMPRINT SPECS

- ✓ Recommended letter height: 1/2"
- ✓ Recommended line thickness: 1/16"
- ✓ 4-color process

All mats have a 3-5% variance. Different designs, sizes and products can not be combined for higher quantity break pricing.





MOLDED BAR MATS

ITEM# M550



FEATURES & BENEFITS

- Constructed of durable PVC vinyl
- Non-absorbent and easily cleaned
- Designed to catch and trap liquids
- PMS color matching
- **MOQ:** 50 pieces

STANDARD SIZES

Size	Maximum Print Area	Weight
3.5" x 21"	2" x 19.5"	1.28 lbs.
12" x 12"	10.5" x 10.5"	1.50 lbs.
14" x 14"	12.5" x 12.5"	2.00 lbs.

Custom Sizes Available

All mats have a 3-5% variance. Different designs, sizes and products can not be combined for higher quantity break pricing. **A mold fee applies to initial orders of all molded mats.**

MAT SPECS

Overall Mat Thickness: 1/2"

Material: PVC Vinyl

Face Weight: 216 oz./sq. yd.

IMPRINT SPECS

- ✓ Recommended letter height: 1/4"
- ✓ Recommended line thickness: 1/16"
- ✓ Spot-color imprint
- ✓ PMS color matching available



FLOCK IMPRINT AND MAT COLORS



FLOCK IMPRINT COLORS

Products: F206, F209 and F213



FLOCKED MAT COLORS

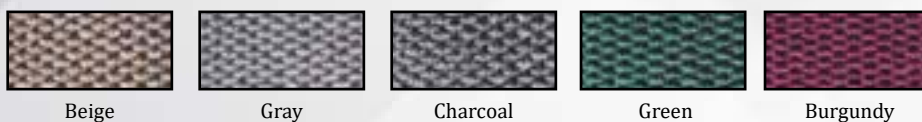
Olefin: F206 (pg 9)



Camelot: F213 (pg 11)



Diamondback: F209 (pg 10)



MAT AND IMPRINT OPTIONS



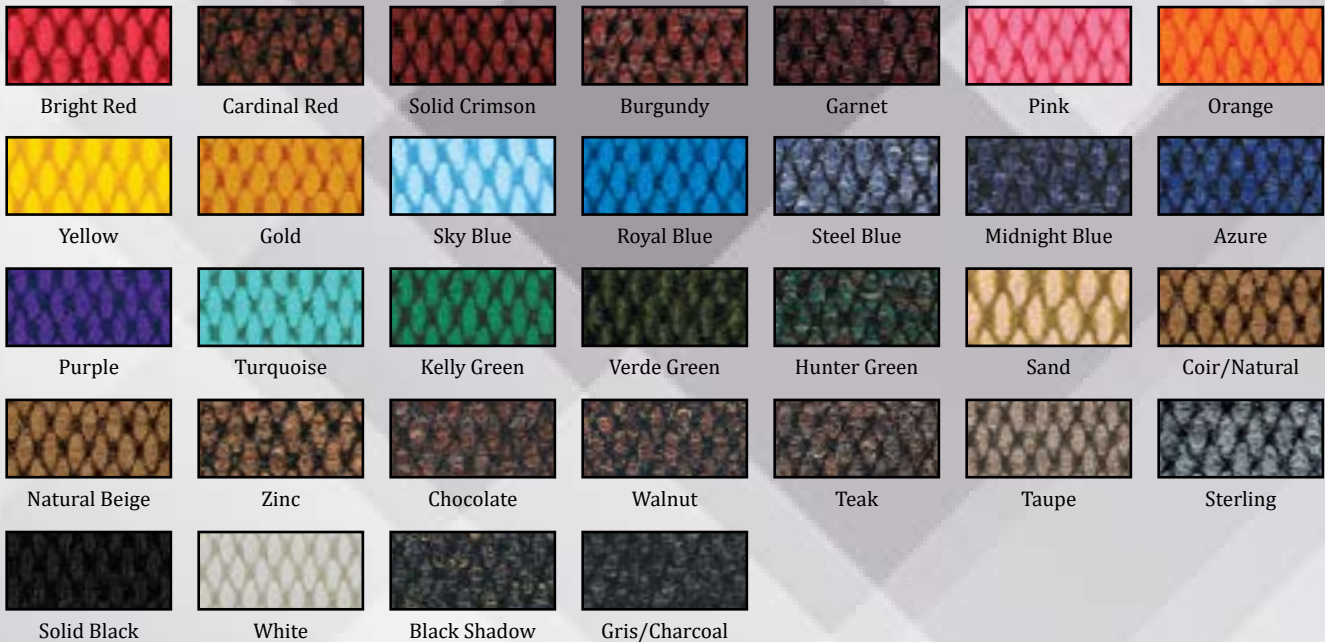
NYLON DYE COLORS

Products: [J603R \(pg 20\)](#) and [J604V \(pg 22\)](#) *Most popular colors shown. Additional colors available, contact for full list.



DEFENDER BASE AND INLAY COLORS

Products: D214N/B (pg 26)



FRONT RUNNER COLORS

Products: DP205 (pg 14)



FUSION COLORS

Products: DP217 (pg 15)

