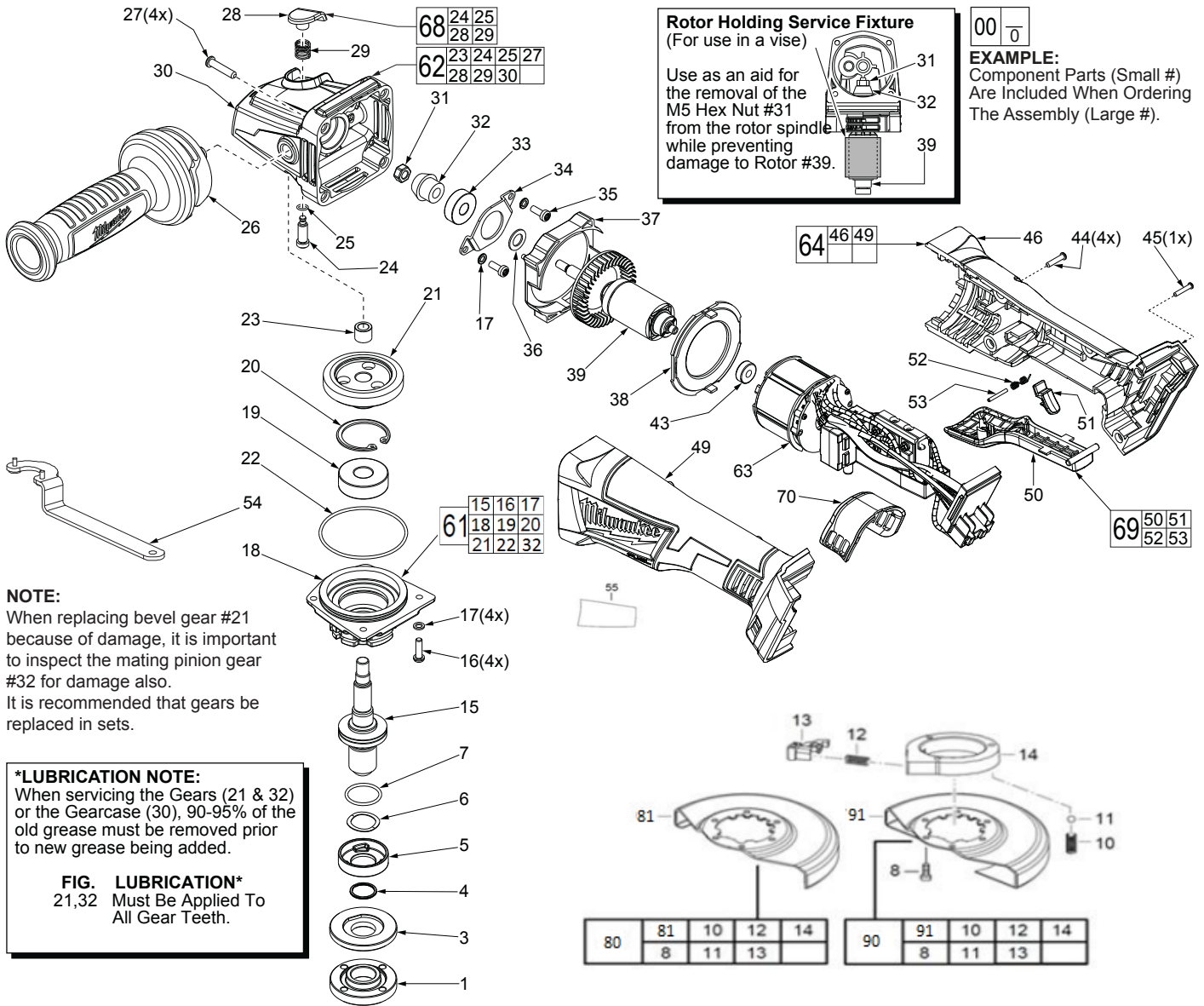




SERVICE PARTS LIST

SPECIFY CATALOG NO. AND SERIAL NO. WHEN ORDERING PARTS		DATE Apr. 2016
M18 FUEL™ 5" Grinder XTEC/Paddle-Tool		WIRING INSTRUCTION SEE PAGE 2
MODEL NO.	M18CAG125XPD-0	



Rotor Holding Service Fixture
(For use in a vise)

Use as an aid for the removal of the M5 Hex Nut #31 from the rotor spindle while preventing damage to Rotor #39.

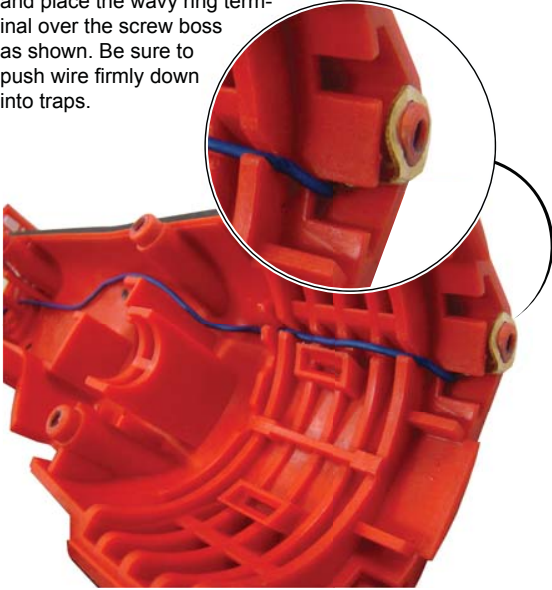
EXAMPLE:
Component Parts (Small #) Are Included When Ordering The Assembly (Large #).

NOTE:
When replacing bevel gear #21 because of damage, it is important to inspect the mating pinion gear #32 for damage also. It is recommended that gears be replaced in sets.

***LUBRICATION NOTE:**
When servicing the Gears (21 & 32) or the Gearcase (30), 90-95% of the old grease must be removed prior to new grease being added.

FIG. LUBRICATION*
21,32 Must Be Applied To All Gear Teeth.

Route the voltage protection ground wire from the PCBA, through the traps in the left housing half and place the wavy ring terminal over the screw boss as shown. Be sure to push wire firmly down into traps.



WIRE ROUTING AND TRAPPING for the ELECTRONICS KIT in the HANDLE SUPPORT (Left Handle Halve)

