



---

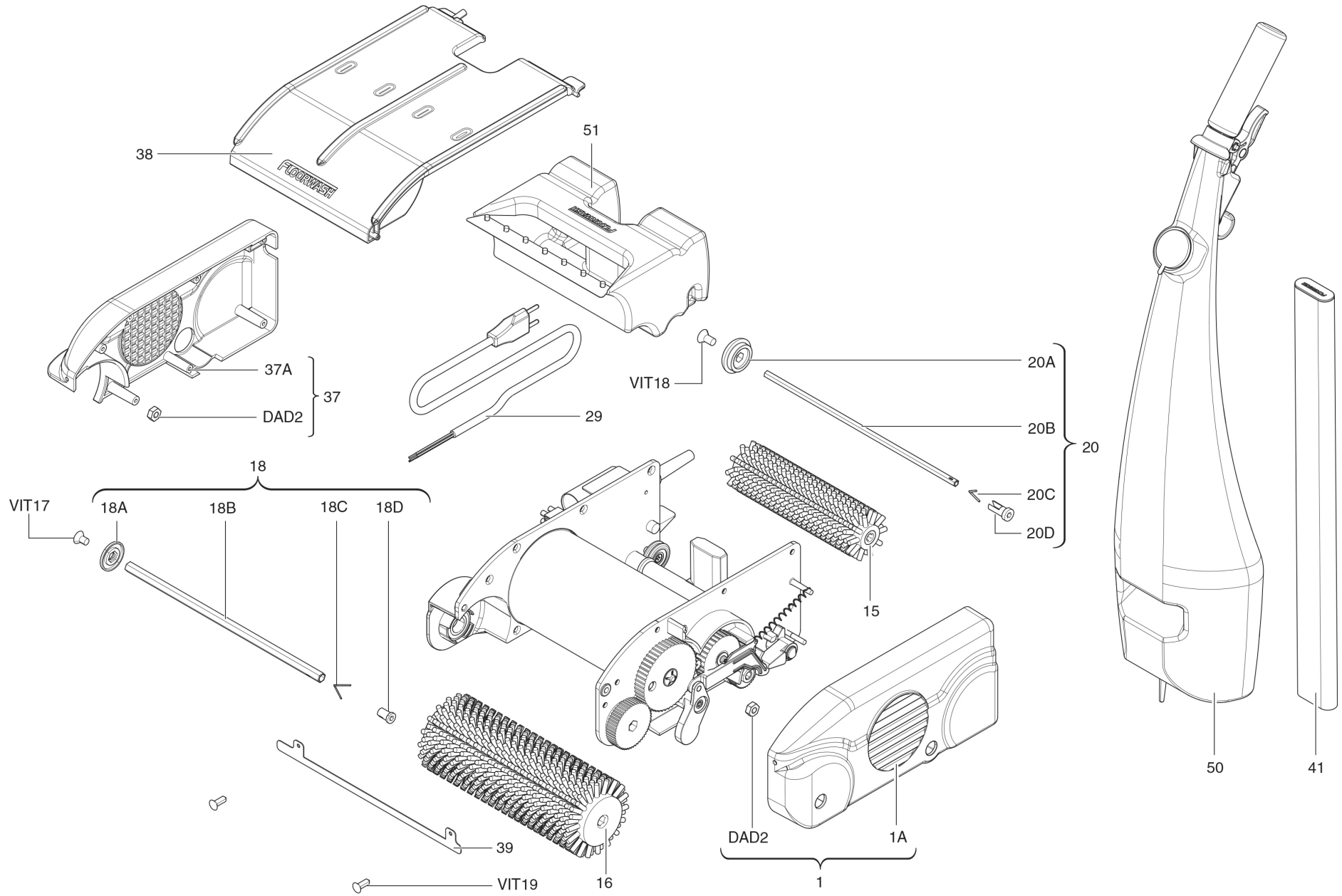
# SPARE PARTS FLOORWASH 1000/5000

---

2021

**ANNEX A1**

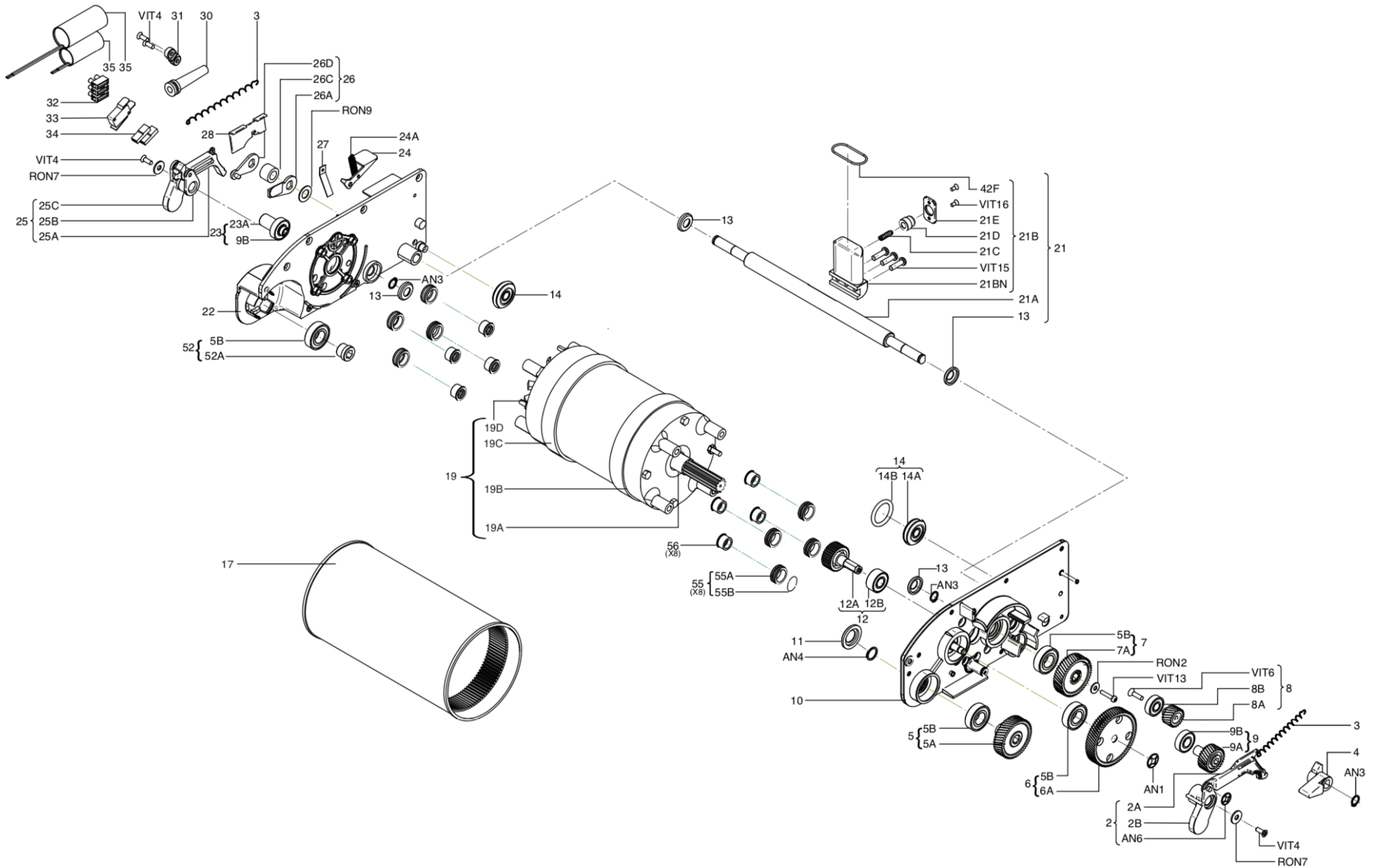
## Exploded 1 Floorwash 1000/5000



## FLOOR SCRUBBER FLOORWASH 1000/5000

CODE	DESCRIPTION	QUANTITY	PRICE
<b>01</b>	<b>SIDE CASING LEFT NYLON</b>	<b>1</b>	<b>\$ 21.92</b>
01A	OUTSIDE CASING RIGHT NYLON	1	\$ 21.78
DAD2	SQUARE NUT 4MA	2	\$ .15
CAF25	MACHINE'S BODY F25	1	/
<b>15</b>	<b>UNIVERSAL BACK BRUSH</b>	<b>1</b>	<b>\$ 179</b>
<b>16</b>	<b>UNIVERSAL FRONT BRUSH</b>	<b>1</b>	<b>\$</b>
VIT17	SCREW A2 FOR EXAGON SPINDLE CH10	1	\$ .15
VIT18	SCREW A2 FOR EXAGON SPINDLE CH7	1	\$ .15
<b>18</b>	<b>SPRING EXAGON SPINDLE CH10 COMPLETE</b>	<b>1</b>	<b>\$ 21.78</b>
18A	INSERTING BUTTON FOR EXAGON SPINDLE CH10	1	\$ 2.75
18B	EXAGON SPINDLE CH10	1	\$ 15.95
18C	SNAP SPRING FOR EXAGON SPINDLE CH10	1	\$ .99
18D	EXPPELLING BUTTON FOR EXAGON SPINDLE CH10	1	\$ 2.75
VIT19	SCREW A2 FOR SPLASH PLATE	2	\$ .15
<b>20</b>	<b>SPRING EXHAGON SPINDEL CH7 COMPLETE</b>	<b>1</b>	<b>\$ 18.25</b>
20A	INSERTING BUTTON FOR EXHAGON SPINDLE CH7	1	\$ 1.59
20B	EXHAGON SPINDLE CH7	1	\$ 13.25
20C	SNAP SPRING FOR EXHAGON SPINDLE CH7	1	\$ .99
20D	EXPELL BUTTON FOR EXHAGON SPINDLE CH7	1	\$ 2.75
<b>29</b>	<b>COMPLETE CABLE WITH PLUG ITA 7MT</b>	<b>1</b>	<b>\$ 31.99</b>
<b>37</b>	<b>OUTSIDE CASING LEFT NYLON</b>	<b>1</b>	<b>\$ 21.99</b>
37A	OUTSIDE CASING LEFT NYLON	1	\$ 21.78
<b>38</b>	<b>COMPLETE COVER F25</b>	<b>1</b>	<b>\$ 54</b>
<b>39</b>	<b>SPLASH PLATE A2</b>	<b>1</b>	<b>\$ 15.99</b>
<b>41</b>	<b>HANDLE</b>	<b>1</b>	<b>\$ 36.30</b>
<b>50</b>	<b>WATER TANK</b>	<b>1</b>	<b>\$ 95</b>
<b>51</b>	<b>DIRTY WATER TRAY</b>	<b>1</b>	<b>\$ 81.99</b>

## FLOOR SCRUBBER FLOORWASH 1000/5000: MACHINE'S BODY



## FLOOR SCRUBBER FLOORWASH 1000/5000

MACHINE'S BODY

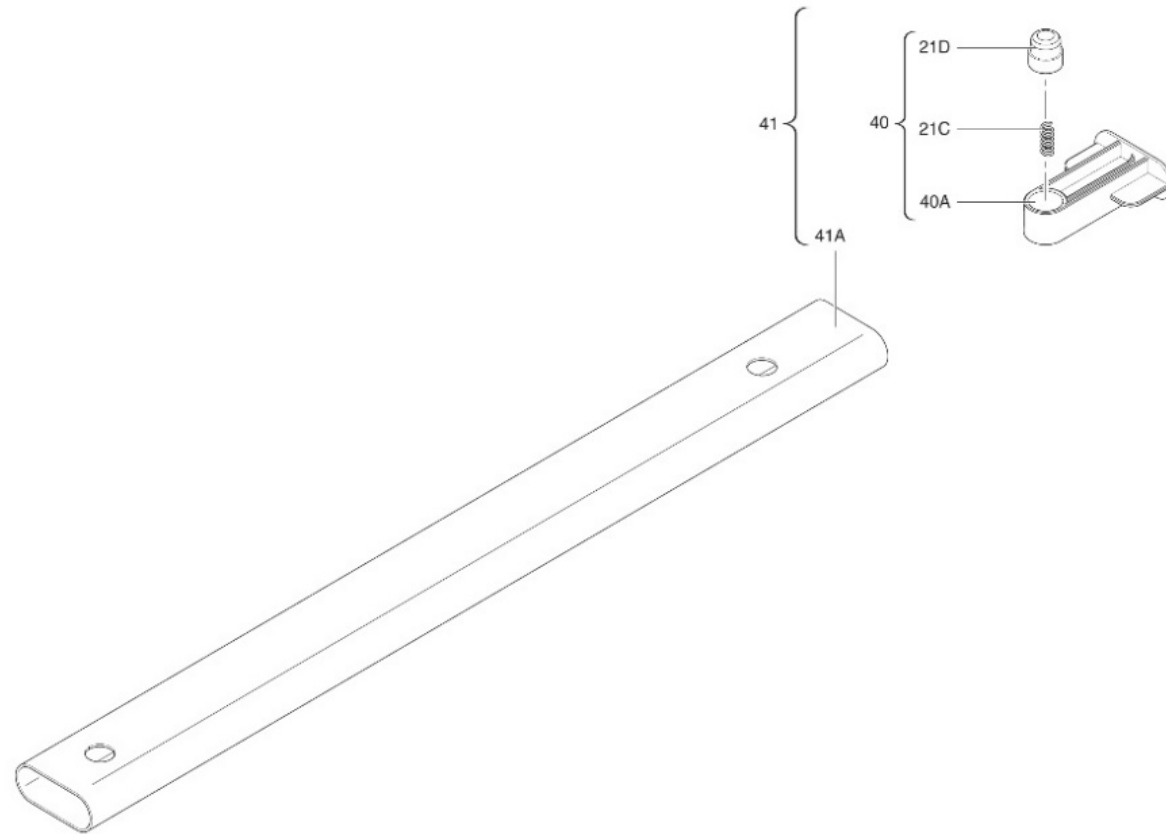
CODE	DESCRIPTION	QUANTITY	PRICE
AN3	SEEGER RING A2 $\phi$ 12	3	\$ .30
VIT4	SELF TAPPING SCREW TPS+ZN 4,8X16	4	\$ .10
RON7	FLAT WASHER A2 6X18	2	\$ .10
<b>RIC02</b>	<b>UNDER CARRIAGE LEFT F25</b>	<b>1</b>	<b>\$ 17.50</b>
RIC02A	<b>UNDER CARRIAGE ARM LEFT F25</b>	1	\$ 8.50
RIC02B	LIFT OUT PIN OF UNDER CARRIAGE LEFT	1	\$ 9.15
RIC03	TENSION SPRING DF 0,8 mm	2	\$ .18
RIC04	LEFT CAM	1	\$ 4.65
<b>RIC05</b>	<b>COG WITH BEARRING <math>\phi</math> 53 mm</b>	<b>1</b>	<b>\$ 21.49</b>
RIC05A	COG ACUSTIC ABSORBENT IN NYLON $\phi$ 53 mm	1	\$ 12.78
RIC05B	BEARRING 6003 2RS INOX	4	\$ 8.72
<b>RIC06</b>	<b>COG WITH BEARRING <math>\phi</math> 78 mm</b>	<b>1</b>	<b>\$ 21.49</b>
RIC06A	COG ACUSTIC ABSORBENT IN NYLON $\phi$ 78 mm	1	\$ 12.78
AN1	LOCK SEEGER RING A2 KS8	1	\$ .34
<b>RIC07</b>	<b>COG WITH BEARRING <math>\phi</math> 53 mm</b>	<b>1</b>	<b>\$ 21.49</b>
RIC07A	COG ACUSTIC ABSORBENT. NO SEGER IN NYLON $\phi$ 53 mm	1	\$ 12.79
<b>RIC08</b>	<b>COG WITH BEARRING +SCREW <math>\phi</math> 26mm</b>	<b>1</b>	<b>\$ 27.45</b>
RIC08A	COG ACUSTIC ABSORBENT NYLON $\phi$ 26mm	1	\$ 11.54
RIC08B	BEARRING 6000 2RS	1	\$ 4.64
VIT6	SELF TAPPING SCREW TPS+A2 5,5X19	1	\$ .15
<b>RIC09</b>	<b>COG WITH BEARRING <math>\phi</math> 33</b>	<b>1</b>	<b>\$ 27.45</b>
RIC09A	COG ACOUSTIC ABSORBENT IN NYLON $\phi$ 33	1	\$ 13.10
RIC09B	BEARRING 6001 2RS	2	\$ 6.1
RON2	FLAT WASHER WITH WIDE STRIPE A2 5,3X15	1	\$ .10
VI13	SELF TAPPING SCREW TC+A2 4,2X25	1	\$ .10
RIC10	SIDE CASING LEFT F25	1	\$ 31.39
RIC11	BEARRING'S GASKET 6003	1	\$ 2.62
AN4	SEEGER RING A2 $\phi$ 16	1	\$ .40

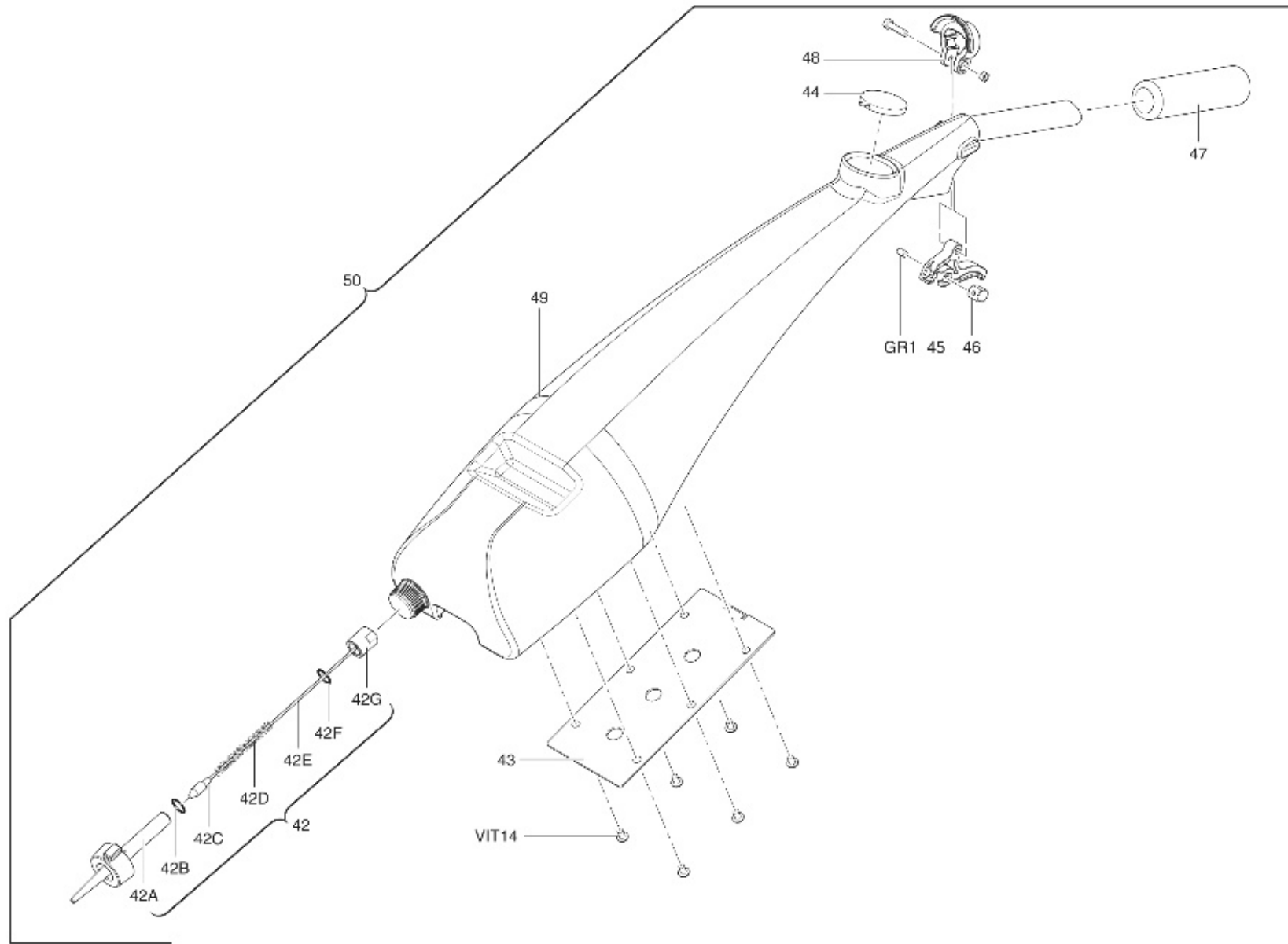
<b>RIC12</b>	<b>INNER COG WITH BEARRING <math>\phi</math> 34</b>	<b>1</b>	<b>\$</b>	<b>20.33</b>
RIC12A	COG ACUSTIC ABSORBENT IN NYLON $\phi$ 34	1	\$	12.64
RIC12B	BEARRING 63001 2RS	1	\$	7.69
RIC13	BEARRING'S GASKET 6001	4	\$	3.37
<b>RIC14</b>	<b>WHEEL OF TRANSPORTATION</b>	<b>2</b>	<b>\$</b>	<b>10.74</b>
RIC14A	WHEEL OF TRANSPORTATION WITHOUT GASKET	2	\$	9.44
RIC14B	GASKET FOR WHEEL OF TRANSPORTATION	2	\$	1.31
<b>RIC17</b>	<b>CENTRAL DRUM L: 206,5 mm</b>	<b>1</b>	<b>\$</b>	<b>48.79</b>
<b>RIC19</b>	<b>MOTOR COMPLETE F25 400W</b>	<b>1</b>	<b>\$</b>	<b>210.54</b>
RIC19A	MOTOR GASKET 15X30X7	1	\$	2.03
RIC19B	MOTOR LEFT COVER IN AL	1	\$	12.20
RIC19C	MOTOR RIGHT COVER IN AL	1	\$	12.20
RIC19D	MOTOR FAN F25	1	\$	4.64
<b>RIC21</b>	<b>ANODIZED ALUMINUM AXEL F25</b>	<b>1</b>	<b>\$</b>	<b>69.70</b>
RIC21A	ALUMINUM SHAFT ANZ	1	\$	27.59
RIC21B	QUICK RELEASE BLOCK IN AL ANZ	1	\$	42.11
RIC21C	COMPRESSION SPRING IN A2	2	\$	.99
RIC21D	BUTTON	1	\$	2.19
RIC21E	BUTTON COVER	1	\$	1.75
VIT15	SCREW TBEI A2 M6X20	3	\$	.25
VIT16	SCREW TPS+FE M4X8 ZN	2	\$	.10
RIC22	SIDE CASING RIGHT F25	1	\$	31.37
<b>RIC23</b>	<b>BRUSH CARRIER WITH BEARRING 6001</b>	<b>1</b>	<b>\$</b>	<b>22.94</b>
RIC23A	BRUSH CARRIER WITHOUT BEARRING	1	\$	16.85
<b>RIC 24</b>	<b>START PEDAL INOX</b>	<b>1</b>	<b>\$</b>	<b>24.40</b>
RIC24A	TENSION SPRING FOR STARTING PEDAL	1	\$	3.05
<b>RIC25</b>	<b>UNDER CARRIAGE RIGHT F25</b>	<b>1</b>	<b>\$</b>	<b>14.50</b>
RIC25A	<b>UNDER CARRIAGE ARM RIGHT F25</b>	1	\$	5.80
RIC25B	MALE RIGHT CARRIAGE	1	\$	2.92
RIC25C	FEMALE RIGHT CARRIAGE DESTRO	1	\$	5.80
<b>RIC26</b>	<b>CAM RIGHT COMPLETE</b>	<b>1</b>	<b>\$</b>	<b>30.49</b>
RIC26A	PLATE IN IRON FOR RIGHT CAM	1	\$	8.42
RIC26B	FEMALE CAM DX	1	\$	4.64
RIC27	INOX SPRING	1	\$	3.05



RIC28	LIFTING PLATE INOX	1	\$	17.42
RIC30	CABLE BRIDGE WITH DOUBLE RING	1	\$	4.64
RIC31	CABLE BLOCK	1	\$	3.05
RIC32	TERMINAL NY 10MMQ 12P+REED	1	\$	6.10
RIC33	MICROSWITCH+ DEHYDROGENATED LEVER	1	\$	10.74
RIC34	FASTON COVER NY 6,3 BMM 01022	2	\$	.99
RIC35	CAPACITOR 8MF 450V 30X69	1	\$	10.74
RIC36	CAPACITOR 4MF 450V 25X57	1	\$	7.55
<b>RIC52</b>	<b>BRUSH CARRIER DARLYN WITH BEARRING 6003</b>	<b>1</b>	<b>\$</b>	<b>22.94</b>
RIC55	ROLL SPIN C.R.	1	\$	1.81
RIC55B	OR GUM 7.12X2,62 FPM75 FOR ROLL SPIN F25	1	\$	.50
RIC56	BRASS BUSH ø17x10,2	1	\$	14.23

# FLOOR SCRUBBER FLOORWASH 1000/5000: HANDLE AND WATER TANK





<b>FLOOR SCRUBBER FLOORWASH 1000/5000 HANDLE AND TANK</b>			
CODICE	DESCRIPTION	QUANTITY	PRICE
<b>RIC40</b>	<b>SEALING CAP AND HANDLE RELEASER</b>	<b>1</b>	<b>\$ 10.16</b>
RIC40A	NYLON CAP FOR THE HANDLE	1	\$ 7.26
<b>RIC41</b>	<b>COMPLETE HANDLE F25</b>	<b>1</b>	<b>\$ 36.25</b>
RIC41A	EAMPTY HANDLE WITH HOLES $\phi$ 14 + ANZ F25	1	\$ 26.14
RIC42	COMPLETE WATER VALVE F25	1	\$ 36.49
RIC42A	VALVE F25	1	\$ 12.19
RIC42B	GASKET 4,9 X 1,9	1	\$ .30
RIC42C	BRASS TERMINAL	1	\$ 2.10
RIC42D	COMPRESSION SPRING	1	\$ 2.10
RIC42E	CABLE INOX L: 1MT	1	\$ 9.29
RIC42F	GASKET 23 X 2,50	1	\$ 2.62
RIC42G	THREAD NUT	1	\$ 3.39
VIT14	SCREW TMT A2 5X8	6	\$ .12
RIC43	HANDLE PLATE AL ANZ	1	\$ 24.2
RIC44	TANK CAP $\phi$ 41+LINGUETTA	1	\$ 4.10
RIC45	WATER TRIGGER F25	1	\$ 7.99
RIC46	BRASS NUT	1	\$ 4.64
GR1	GRANO PUNTA PIATTA A2 4X6	1	\$ .15
RIC47	SLIP RESISTANT HANDLE	1	\$ 6.39
RIC48	WATER TANK CABLE LOCK	1	\$ 6.69
RIC49	WATER TANK	1	\$ 43.56
<b>RIC50</b>	<b>COMPLETE WATER TANK F25</b>	<b>1</b>	<b>\$ 95.75</b>