



Tron Roof with Windshield Installation



Thank you for purchasing the optionally installed roof with windshield for the GIO Tron Mobility scooter. We recommend 2 people perform the installation. As portions of the roof kit replace pre-installed parts it is required to remove them to finish installation.

Assembly Steps

Turning off the breaker	Pg 2
Remove Existing Rear Bumper	Pg 2
Install Rear Support	Pg 3
Remove Existing Front Lights	Pg 4
Install Front Light Plate	Pg 4
Install Windshield	Pg 6
Install Roof	Pg 6

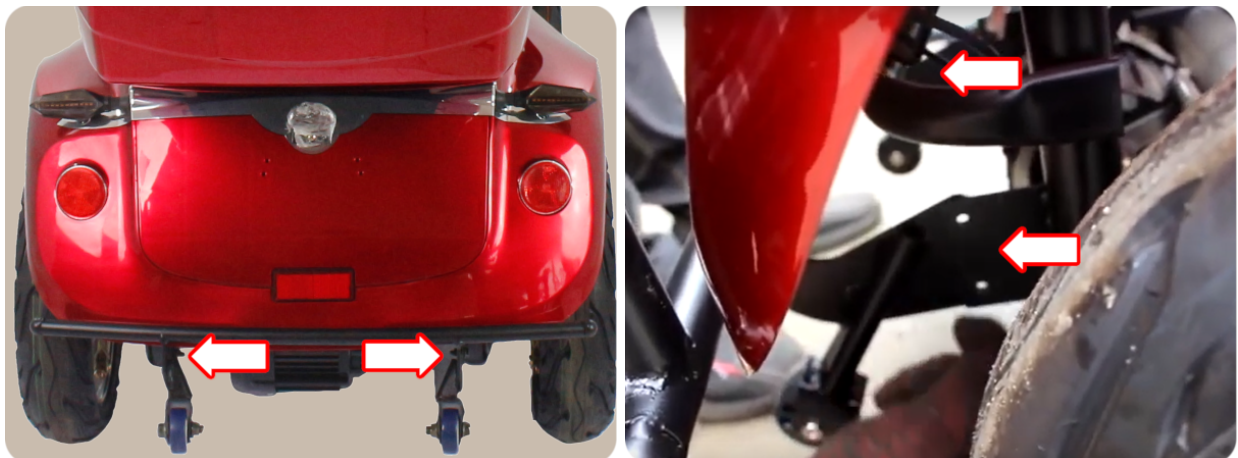
Turning off the breaker

Prior to performing any work on your scooter it is advised to turn the breaker to the off/closed position. Locate the keyhole on the rear body just above the rear turn signal light, insert your ignition key and twist to pop the latch on the hidden seat compartment. Tilt the seat forward to reveal the compartment and the breaker housed in the edge. Ensure the switch is to the off/closed position.



Removing the existing Rear Bumper

Locate the mounting points for the rear bumper located directly behind and above the anti tip wheels. Loosen and remove the 2 bolts holding each side in place and remove the bumper. Save the nuts and bolts to install the replacement.

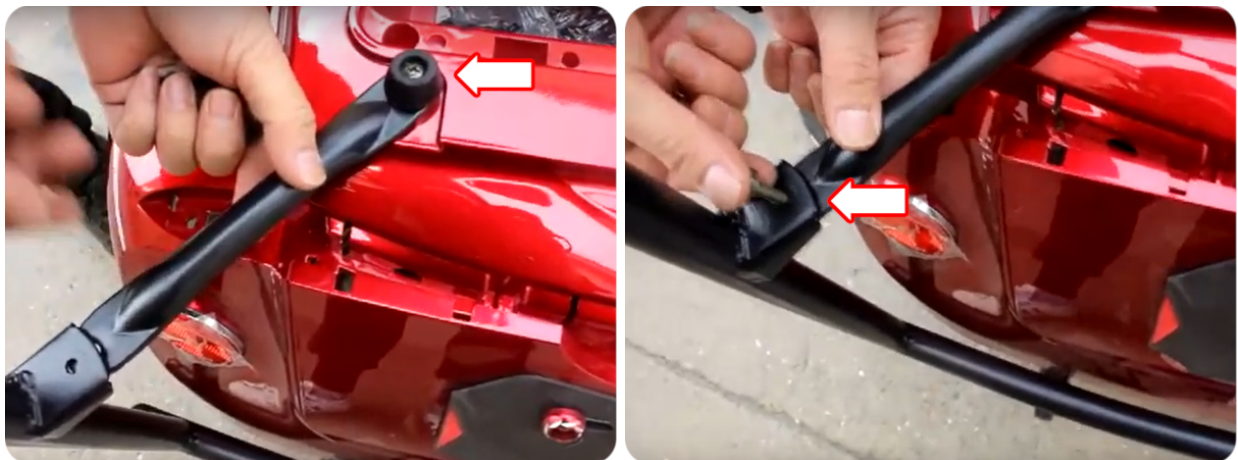


Install Rear Support

Begin by attaching the anti tip wheels to their brackets located at the bottom of the rear support. Insert the axle through the bracket and wheel and secure it with the hex bolts on either side. Position the large rear support into place and attach to the rear bumper brackets with the hardware just removed. Tighten hardware into place.



Locate the middle rear support arms. Tilt the seat forward, remove the installed rubber spacers and reinstall with one end of the support bracket underneath the spacer. Secure the other end of each support bracket to the rear roof support with a small bolt and nut.



Removing the existing Front lights

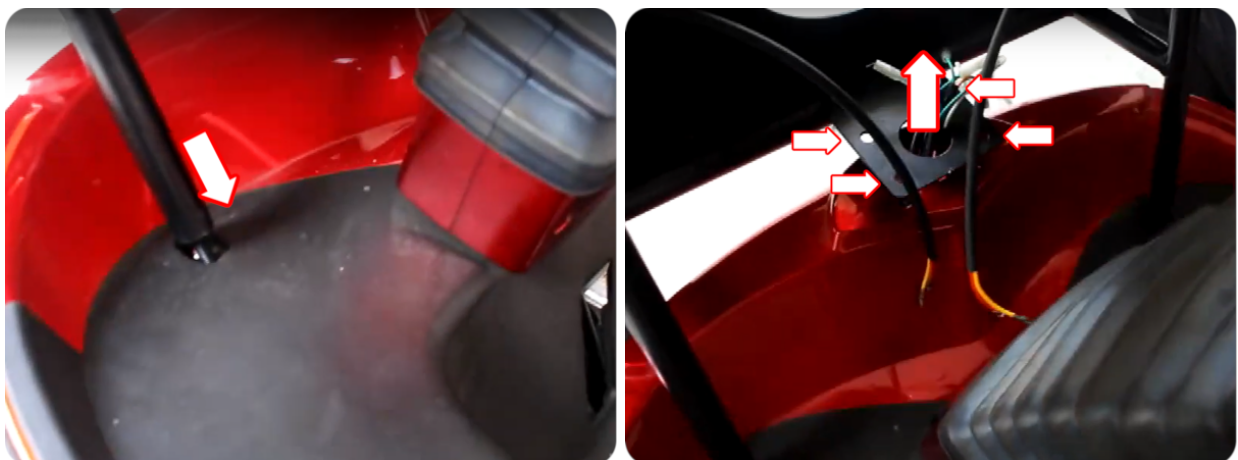
Locate the 4 bolts holding the u-shaped headlight support and remove. Once the support is unbolted carefully remove it and coax the connections for the lights from below. Remove the headlight from the bracket by removing the bolts on either side of it. Please note the connections and their colors and disconnect each connection.



Headlight - 1 Large White connector & 3 individual pin connections
Turn light - 2 individual pin connections each
(please note which set is for which side for correct signal operation)

Install Front Light Plate

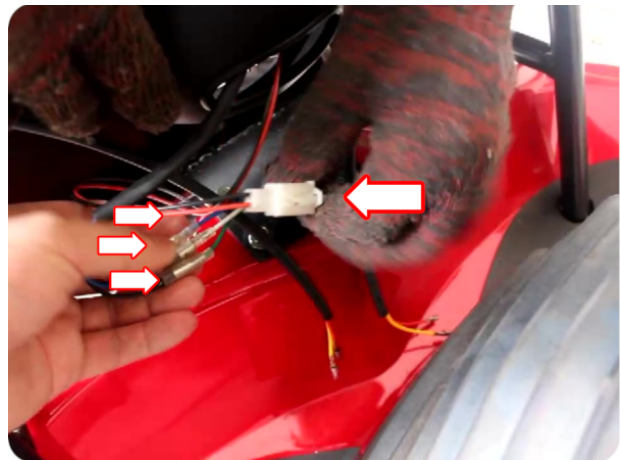
Position the front light plate into position, slide support arms with the threaded ends down through the holes in the body and align the bracket at the base of the headlight cutout with the holes where the previous headlight bracket was. Carefully feed the electrical connection through the center hole and secure the new bracket with bolts.



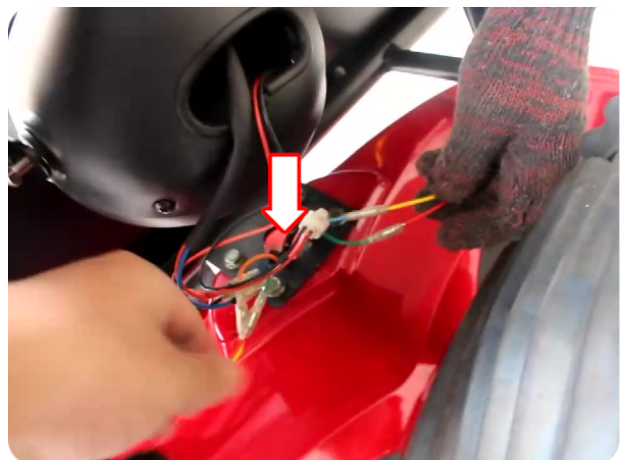
Locate the threaded ends of the support arms now located on the under side of the body, stack and add 2 nuts per thread and tighten.



To reinstall the headlight, first insert a washer in between the headlight and mounting bracket on the front plate cutout, aligning the holes in each. Then secure with the bolts previously removed.



Reconnect the large white connectors and 3 corresponding pin connections as noted earlier. Reconnect the correct turn signal to each set of signal connections and carefully tuck wires back below the body. Insert and secure the reflectors into the holes front plate.



Install Windshield

Align the windshield (ships with white label film to prevent scratching) with the mount located on the top of the front plate. Secure with a nut and bolt on either side.



Install Roof

Carefully align the roof with the mounting points on the windshield and rear support. At each mounting point insert 2 bolts upward through the holes and secure each with a nut. Repeat for each corner.



You have now completed the installation of your Tron Roof with windshield. Please save the removed parts in the event you ever wish to remove the roof. Please note these installation instructions are a guide and components and colors of wiring may vary. Please make note of connection colors during disassembly to ensure proper function.