



ALESSI

.HOSPITALITY.

**.HOTEL.
.RESTAURANT.
.CAFÉ.**

ALESSI

.HOSPITALITY.

The force of a brand recognized
and appreciated worldwide combines
with the uniqueness of its surprising,
functional, precious and elegant products,
designed by world-renowned designers.

.HOTEL.

.RESTAURANT.

.CAFÉ.



ALESSI

.HOSPITALITY.

10

.TABLE.

Flatware
Tableware
Glasses
Pots & Pans
Accessories

64

.BREAKFAST.

72

.BAR & WINES.

80

.MEETING & BREAK ROOMS.

88

.GUEST SUITES & LOBBY.

92

.COLLABORATIONS.



Grandpa Giovanni was a talented sheet-metal worker. In 1921 he bought a plot of land at Omegna and founded Alessi. He started handmaking objects for the table and for the home in copper, brass and nickel silver. Grandpa was a real stickler for quality and for well-done work: the things he made quickly won acclaim for their workmanship and perfect finish.

Design, as we understand the word today, first made its appearance with my father, Carlo. He was responsible for most of the objects made between the mid-thirties and 1945, the year he launched his last project, that archetype of early Italian design, called the Bombé tea and coffee sets. Uncle Ettore, eleven years younger than his brother, joined my father in 1945. As head of the technical department, in 1955 he opened Alessi up to collaboration with external designers, producing several ranges of objects, particularly for the catering industry, many of which are still best sellers and many of our service collections have become "industry standard" among hospitality, restaurant and catering professionals today.



Alberto Alessi



.Alessi becomes a Benefit Corporation, the first among italian design factories.

A Benefit Corporation is a legal entity classification introduced by the 2016 Stability Law, providing that for-profit companies that also claim the responsible, sustainable and transparent pursuit of common good purposes in their Statute.

The common good is the pursuit of one or more positive effects derived from commercial activity, or the reduction of negative ones, on people, community as a whole and on the business environment.

Italy is the first European country to adopt the legal classification of Benefit Corporation, imported from the United States, and Alessi is the first Design Factory to choose this route.

Alessi has always believed in the public utility of business activities, that is the betterment of society, not only through the generation of economic wealth, but also the creation and valuation of people's work and the manufacturing of products that impact the quality of life. Choosing the form of Benefit Corporation, the company formally integrates these objectives with traditional business goals.

Bringing art and poetry into industrial production; taking care of people, considering them as a goal and not a means to an end; generating profit equitably and sustainability within a medium long-term perspective and creating wealth that will affect the whole context. These are the three pillars on which the work of Alessi as a Benefit Corporation is built on, accompanied by the protection for the community and the environment.



Alessi cutlery, dishes and glassware represent the best in contemporary design over the last century. An extraordinary range of designers was offered the opportunity to explore the worlds of porcelain, glass and metal. This work of design has been performed in a very ancient area of production that dates back to the dawn of human civilization. How old is the plate product from which we eat, or the glass product from which we drink? Some thousands of years, and this means that the product types in question as they have come down to us are the result of meticulous work of progressive refinement performed over the centuries by hundreds of generations of mostly anonymous 'designers'. These products are very mature, at a very advanced stage of their development cycle and from which we should not expect big changes. Thus the innovatory aspect of the design plays very much on details, on delicate qualities that are very difficult to achieve.

Alberto Alessi

.TABLE.

.TABLE. Flatware

Flatware in the history of Alessi

The tradition of flatware in Alessi's history begins with the manufacture of table cutlery.

Starting with the 1920's, as Alessandro Mendini points out in the book "Paesaggio Casalingo", we witness a "hectic succession of crafted articles for coffee and tea, the dinner table, bars and the home kitchen, that cater to an often odd demand".

A whole and broad variety of specialized items - like cake servers, sophisticated cutleries for veal shanks, for sugared almonds and to mix beverages - many of which now appear as symbols of a world of social rituals and rules that no longer exist.

Objects to treasure whose value as illustrative documents often surpasses their aesthetic appeal and which continue to live in the collective consciousness of generations of Italians.

Collections of table cutlery, though in lesser number, continue to feature in Alessi catalogues.



Alessi cutlery is the work of the greatest contemporary designers, skilled in combining original aesthetic form with functionality.

Materials

All Alessi cutlery is made of 18/10 stainless steel, while another type of steel, AISI 420, is used for the blades. The steel used and its processing guarantee outstanding hardness characteristics and precision cutting blades.

Production

Alessi cutlery is the end result of the multi-stage processing of a steel plate. The cutlery undergoes a series of cold processes such as rolling, shearing and, for the spoons, deep drawing.

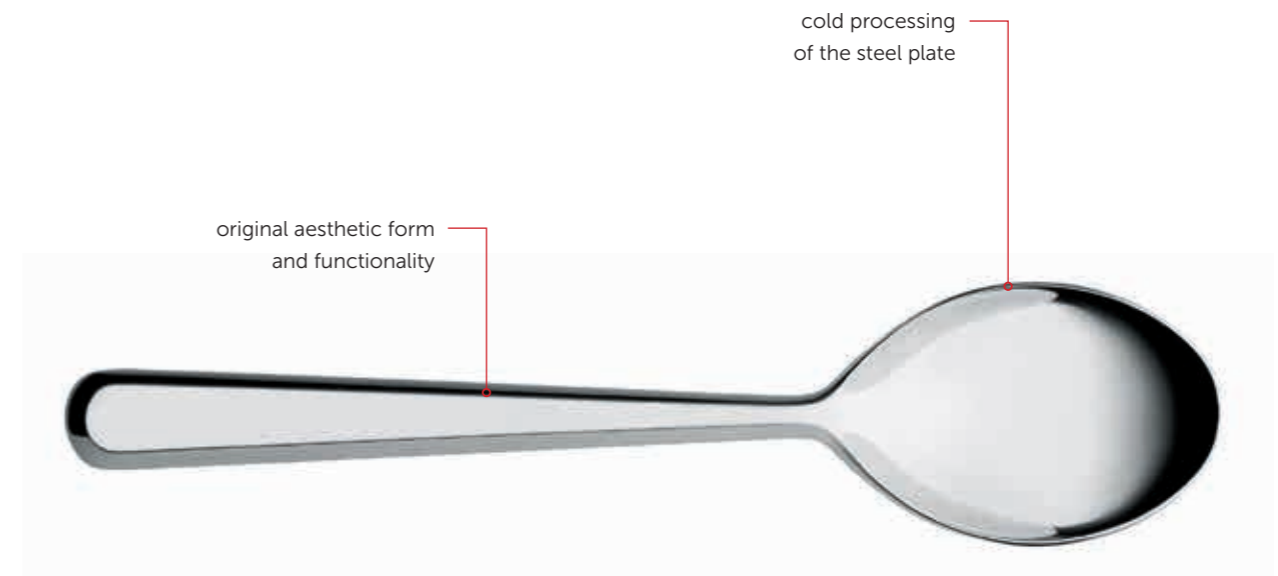
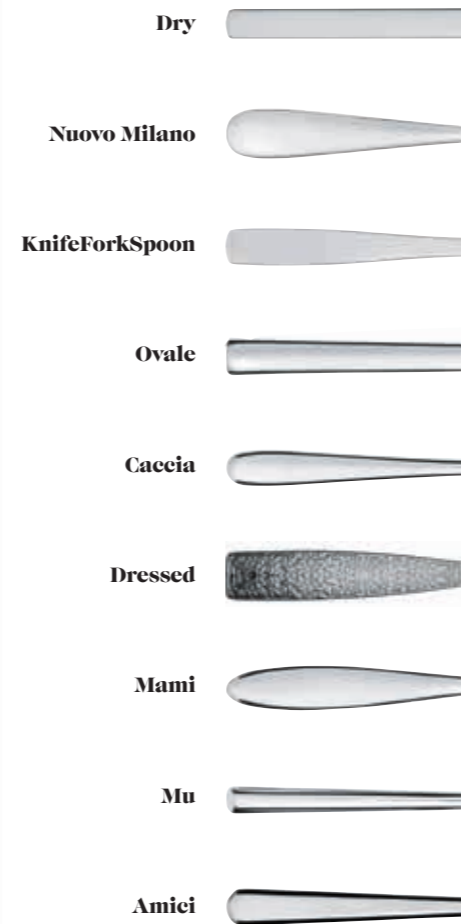
Finish

During the production of our cutlery, particular importance is placed on the finish. Our cutlery undergoes a meticulous polishing process, carried out with the aid of soft brushes. The various polishing operations are performed manually, to guarantee perfect results, even on the most difficult parts and down to the smallest detail.

An extensive range

The Alessi catalogue comprises a diverse range of cutlery sets. These range from basic cutlery, to increasingly comprehensive sets such as "Nuovo Milano" and "Dry" which offer 26 and 28 types of cutlery respectively. Some of our sets also allow you to choose between two knife versions: hollow handle and monobloc (or full handle).

The construction of the empty handle knife involves the union of two parts produced separately. The blade, in temperable AISI 420 steel, is engaged and locked in the handle, which is made from AISI 304 stainless steel. The construction of the empty handle knife is particularly advanced. It also reduces the weight of the handle, making the knife easier to manoeuvre. The full handle (monobloc) knife is instead made of a single piece of temperable AISI 420 steel.



Dry

design Achille Castiglioni



4180/1 Table spoon. 7.48"
4180/2 Table fork. 7.48"
4180/3 Table knife. 8.74"



4180/7 Tea spoon. 5.71"
4180/8 Coffee spoon. 5.12"
4180/22 Ice cream spoon. 5.71"



4180/9 Mocha coffee spoon. 4.14"
4180/9S4 4 x art. 4180/9



4180/5 Dessert fork. 6.70"
4180/6 Dessert knife. 7.48"



4180/11 Serving spoon. 9.45"



4180/14 Salad set. 11.82"



4180/15 Cake server. 10.63"
4180/16 Pastry fork. 6.70"
4180/4 Dessert spoon. 6.70"



4180/17 Fish fork. 7.09"
4180/18 Fish knife. 8.27"



4180/13 Sauce spoon. 7.09"



4180/31 Soup spoon. 7.09"
4180/27 Risotto serving spoon. 10.83"



4180/23 Long drink spoon. 7.88"

sets available

- 4180S24**
set of 24 pieces
- 4180S30**
set of 30 pieces

Nuovo Milano

design Ettore Sottsass



5180/1 Table spoon. 7.68"
5180/2 Table fork. 7.68"
5180/3 Table knife. 9.06"
5180/3M Monobloc table knife. 9.06"



5180/7 Tea spoon. 5.51"
5180/8 Coffee spoon. 4.92"
5180/9 Mocha coffee spoon. 4.14"
5180/22 Ice cream spoon. 5.12"



5180/5 Dessert fork. 6.70"
5180/6 Dessert knife. 7.48"
5180/6M Monobloc table knife. 7.48"



5180/11 Serving spoon. 9.45"
5180/12 Serving fork. 9.45"



5180/14 Salad set. 10.24"



5180/15 Cake server. 9.06"
5180/16 Pastry fork. 6.30"
5180/4 Dessert spoon. 6.93"



5180/17 Fish fork. 7.48"
5180/18 Fish knife. 7.88"



5180/19 Serving fish fork. 9.06"
5180/20 Serving fish knife. 9.85"



5180/13 Sauce spoon. 7.09"
5180/10 Ladle. 10.24"



5180/25 Carving knife. 11.82"



5180/23 Long drink spoon. 7.88"
5180/26 "F.Point" flat spoon. 7.09"

sets available

- 5180S24M**
set of 24 pieces
- 5180S24**
set of 24 pieces
- 5180S30**
set of 30 pieces

KnifeForkSpoon

design Jasper Morrison



AJM22/1 Table spoon. 7.68"
AJM22/2 Table fork. 7.48"
AJM22/3M Monobloc table knife. 8.27"



AJM22/7 Tea spoon. 5.12"
AJM22/8 Coffee spoon. 4.73"
AJM22/9 Mocha coffee spoon. 3.94"



AJM22/5 Dessert fork. 6.70"
AJM22/6M Monobloc dessert knife. 7.09"



AJM22/14 Salad set. 9.85"



AJM22/15 Cake server. 10.24"
AJM22/16 Pastry fork. 6.70"
AJM22/4 Dessert spoon. 6.30"

sets available

AJM22S24M
set of 24 pieces

Ovale

design Ronan and Erwan Bouroullec



REB09/1 Table spoon. 7.88"
REB09/2 Table fork. 7.88"
REB09/3 Table knife. 8.66"



REB09/7 Tea spoon. 5.51"
REB09/8 Coffee spoon. 4.92"
REB09/9 Mocha coffee spoon. 4.14"



REB09/5 Dessert fork. 6.70"
REB09/6 Dessert knife. 7.88"



REB09/14 Salad set. 10.24"



REB09/15 Cake server. 9.85"
REB09/16 Pastry fork. 6.50"
REB09/4 Dessert spoon. 6.70"

sets available

REB09S5
set of 5 pieces
REB09S24
set of 24 pieces



Caccia

design Luigi Caccia Dominioni, Livio and Pier Giacomo Castiglioni



LCD01/1 Table spoon. 7.88"
 LCD01/2 Table fork (3 prongs). 7.48"
 LCD01/2R4 Table fork (4 prongs). 7.48"
 LCD01/3 Table knife. 9.06"
 LCD01/3M Monobloc table knife. 9.06"



LCD01/7 Tea spoon. 5.12"
 LCD01/8 Coffee spoon. 4.33"
 LCD01/22 Ice cream spoon. 6.30"



LCD01/5 Dessert fork. 6.70"
 LCD01/6 Dessert knife. 7.88"
 LCD01/6M Monobloc dessert knife. 7.96"



LCD01/11 Serving spoon. 9.85"
 LCD01/12 Serving fork. 9.85"



LCD01/14 Salad set. 11.42"



LCD01/15 Cake server. 10.63"
 LCD01/16 Pastry fork. 6.30"
 LCD01/4 Dessert spoon. 6.70"



LCD01/17 Fish fork. 6.70"
 LCD01/18 Fish knife. 7.88"



LCD01/13 Sauce spoon. 7.48"
 LCD01/10 Ladle. 12.60"

sets available

- LCD01S24
set of 24 pieces
- LCD01S24M
set of 24 pieces
- LCD01S24R
set of 24 pieces





Dressed

design Marcel Wanders



MW03/1 Table spoon. 7.68"
MW03/2 Table fork. 7.48"
MW03/3 Table knife. 8.27"



MW03/7 Tea spoon. 5.12"
MW03/8 Coffee spoon. 4.73"
MW03/9 Mocha coffee spoon. 3.94"



MW03/5 Dessert fork. 6.70"
MW03/6 Dessert knife. 7.09"



MW03/11 Serving spoon. 9.85"
MW03/12 Serving fork. 9.85"



MW03/14 Salad set. 11.03"



MW03/15 Cake server. 9.85"
MW03/16 Pastry fork. 6.70"
MW03/4 Dessert spoon. 6.70"



MW03/10 Ladle. 11.42"



MW03/35 Latte macchiato spoon. 8.27"
MW03/37 Butter knife. 6.30"

sets available

MW03S5
 set of 5 pieces

MW03S24
 set of 24 pieces

Mami

design Stefano Giovannoni



SG38/1 Table spoon. 7.88"
SG38/2 Table fork. 7.88"
SG38/3 Table knife. 9.26"
SG38/3M Monobloc table knife. 9.26"



SG38/7 Tea spoon. 5.51"
SG38/8 Coffee spoon. 5.12"
SG38/9 Mocha coffee spoon. 4.14"



SG38/5 Dessert fork. 6.70"
SG38/6 Dessert knife. 7.88"
SG38/6M Monobloc dessert knife. 7.88"



SG38/11 Serving spoon. 9.65"
SG38/12 Serving fork. 9.65"



SG38/14 Salad set. 10.24"



SG38/15 Cake server. 9.65"
SG38/16 Pastry fork. 6.50"
SG38/4 Dessert spoon. 6.70"



SG38/17 Fish fork. 7.48"
SG38/18 Fish knife. 8.27"



SG38/10 Ladle. 10.83"

sets available

SG38S24
 set of 24 pieces

SG38S24M
 set of 24 pieces

Mu

design Toyo Ito



T104/1 Table spoon. 7.88"
T104/2 Table fork. 7.88"
T104/3 Table knife. 8.66"



T104/5 Dessert fork. 7.09"
T104/8 Coffee spoon. 5.12"

sets available

T104S24
set of 24 pieces

Amici

design BIG-GAME



BG02/1 Table spoon. 7.48"
BG02/2 Table fork. 7.56"
BG02/3 Table knife. 8.66"



BG02/7 Tea spoon. 5.12"
BG02/8 Coffee spoon. 4.33"



BG02/15 Cake server. 9.85"
BG02/5 Dessert fork. 6.50"
BG02/6 Dessert knife. 7.29"



BG02/14 Salad set. 9.45"



BG02/34S4 Set of hors-d'oeuvre forks. 5.12"
BG02/37S4 Set of 4 butter knives. 5.91"

sets available

BG02S24
set of 24 pieces



.TABLE. Tableware

The subtle quality of beautiful tableware

In Alessi history, an extraordinary variety of authors was offered the opportunity to explore the worlds of porcelain: from the masters of Italian design like Achille Castiglioni and Ettore Sottsass, who designed our first tableware collections, to designers of the more recent generation like Philippe Starck, Stefano Giovannoni and Jasper Morrison, to major international architects like Doriane and Massimiliano Fuksas, Toyo Ito and David Chipperfield, to the new young designers like Marcel Wanders.

Alberto Alessi



Dressed

design Marcel Wanders



MW01/2 Soup bowl.
ø 9.18"
MW01/1 Dining plate.
ø 10.75"



MW01/5 Side plate.
ø 8.07"



MW01/54 Dessert bowl.
7.4 fl oz - ø 5.12" - h 1.58"
MW01/3 Bowl.
17.9 fl oz - ø 5.91"



MW01/21 Round serving plate.
ø 13.19"



MW01/38 Salad serving bowl.
98.1 fl oz - ø 11.62"



MW01/76 Mocha cup.
2.4 fl oz - ø 2.17"
MW01/77 Saucer for mocha cup.
ø 6.30"



MW01/78 Teacup.
5.7 fl oz - ø 3.15"
MW01/79 Saucer for teacup.
ø 7.29"



MW01/89 Mug.
10.1 fl oz - ø 3.15"



MW01/94 Breakfast plate.
ø 6.30"

Dressed en plein air

design Marcel Wanders



MW75 SET Picnic set composed of:
wicker picnic basket, 4 dining plates, 4 soup bowls,
4 spoons, 4 forks, 4 knives,
4 coffee spoons in melamine,
4 glasses in thermoplastic resin (PCTG).

MW74S16 B Cutlery set.



MW72/2 LG Soup bowl.
ø 9.18"
MW72/1 WG Dining plate.
ø 10.75"



MW72/5 W Side plate.
ø 8.07"



MW72/54 W Dessert bowl.
7.4 fl oz - ø 5.12" - h 1.58"



MW72/22 LG Serving plate.
17.72"x7.29"



MW72/38 WG Salad serving bowl.
98.1 fl oz - ø 11.62" - h 2.95"



MW72/76 LG Mocha cup.
2.4 fl oz - 2.95"x2.17" - h 2.17"
MW72/77 W Saucer for mocha cup.
ø 6.30"



MW72/89 WG Mug.
10.1 fl oz - 4.33"x3.15" h 3.54"



MW73/3000 Pitcher.
33.8 fl oz - ø 4.14" - h 10.63"



MW73/41 Glass.
10.1 fl oz - ø 3.15" - h 4.33"

Mami

design Stefano Giovannoni



SG53/2 Soup bowl.
ø 9.45"
SG53/1 Dining plate.
ø 10.83"



SG53/5 Side plate.
ø 7.88"



SG53/54 Dessert bowl.
11.2 fl oz - ø 5.71"



SG53/3 Bowl.
ø 7.48"



SG53/38 Salad serving bowl.
91.3 fl oz - ø 10.83"



SG53/76 Mocha cup.
2 fl oz - ø 2.56"
SG53/77 Saucer for mocha cup.
ø 4.33"



SG53/90 Cappuccino cup.
6.8 fl oz - ø 3.54"



SG53/78 Teacup.
8.5 fl oz - ø 4.73"
SG53/79 Saucer for teacup.
ø 6.30"



SG53/87 Coffee cup
6.8 fl oz - ø 3.15"
SG53/88 Saucer for coffee cup.
ø 5.12"



Tonale

design David Chipperfield



DC03/2 LG Soup bowl.
ø 7.29" - h 1.97"
DC03/1 LG Dining plate.
ø 10.44" - h 0.59"



DC03/5 LG Side plate.
ø 7.88"



DC03/54 LG Dessert bowl.
20.3 fl oz - ø 5.91"
DC03/3 LG Bowl.
47.3 fl oz - ø 7.09" - h 4.33"



DC03/41 LG Beaker.
6.8 fl oz - ø 3.15"



DC03/38 LG Large bowl.
101.4 fl oz - ø 9.06" - h 3.94"



DC03/76 LG Mini-cup.
2.7 fl oz - ø 2.36" - h 1.97"
DC03/77 LG Mini-plate.
ø 4.73"
DC03/78 LG Cup.
8.5 fl oz - ø 3.74" - h 2.56"



DC03/96 LG Salad bowl.
ø 13.00" - h 3.54"



DC03/94 LG Medium jug.
10.1 fl oz - 3.94"x3.15" - h 3.54"
DC03/95 LG Pitcher.
25.4 fl oz - 4.73"x3.94" - h 5.71"



DC03/34 Plate.
ø 8.66"



DC03/3000 Carafe.
25.4 fl oz - ø 3.74" - h 7.09"



DC03/3100 Carafe.
33.8 fl oz - ø 3.94" - h 8.27"

PlateBowlCup

design Jasper Morrison



AJM28/2 Soup bowl.
ø 8.66"
AJM28/1 Dining plate.
ø 10.83"



AJM28/54 Dessert bowl.
16.9 fl oz - ø 5.51"
AJM28/5 Side plate.
ø 7.88"



AJM28/22 Oval serving plate.
14.18"x9.85"



AJM28/3821 Salad serving bowl.
50.7 fl oz - ø 8.27"
AJM28/3826 Salad serving bowl.
111.6 fl oz - ø 10.24"



AJM28/76 Mocha cup.
2.7 fl oz - ø 2.36"
AJM28/77 Saucer for mocha cup.
ø 4.73"



AJM28/78 Teacup.
6.8 fl oz - ø 3.15"
AJM28/79 Saucer for teacup.
ø 5.91"



AJM28/89 Mug.
10.1 fl oz - ø 3.15"

All Time

design Guido Venturini



AGV29/2 Soup bowl.
ø 8.66"
AGV29/1 Dining plate.
ø 10.63"



AGV29/3 Bowl.
23.7 fl oz - ø 6.50"
AGV29/5 Side plate.
ø 7.88"



AGV29/3820 Salad serving bowl.
55.1 fl oz - ø 7.88"
AGV29/3825 Salad serving bowl.
106.5 fl oz - ø 9.65"



AGV29/76 Mocha cup.
3.2 fl oz - ø 2.36"
AGV29/77 Saucer for mocha cup.
ø 4.73"



AGV29/78 Teacup.
9.1 fl oz - ø 3.35"
AGV29/79 Saucer for teacup.
ø 5.91"



AGV29/89 Mug.
12.7 fl oz - ø 3.35"



Colombina collection

design Doriana and Massimiliano Fuksas



FM10/2 Soup bowl.
8.27"x7.09"
FM10/1 Dining plate.
12.21"x10.83"



FM10/5 Side plate.
9.45"x7.80"
FM10/10 B Placemat, black.
15.60"x12.49"



FM10/54 S Small bowl shallow.
7.8 fl oz - 5.83"x4.96" - h 1.58"
FM10/54 H Small bowl deep.
12.2 fl oz - 5.83"x4.96" - h 2.36"



FM10/38 Salad serving bowl.
91.3 fl oz - 12.49"x10.63"



FM10/76 Mocha cup.
2.4 fl oz - 2.95"x2.56"
FM10/77 Saucer.
FM10/77 B Saucer, black.
5.71"x4.73"



FM10/78 Teacup.
6.8 fl oz - 4.06"x3.54"
FM10/79 Saucer.
FM10/79 B Saucer, black.
8.90"x7.17"



.GLASSES.



Mami XL - SG119/0S4
design Stefano Giovannoni
Set of 4 glasses for red wine.
22 fl oz - ø 4.33" - h 8.66"



Mami XL - SG119/1S4
design Stefano Giovannoni
Set of 4 glasses for white wine.
15.2 fl oz - ø 3.54" - h 8.66"



Mami XL - SG119/3S4
design Stefano Giovannoni
Set of 4 glasses for long drink.
16.9 fl oz - ø 3.54" - h 4.33"



Mami XL - SG119/9S4
design Stefano Giovannoni
Set of 4 champagne flutes.
8.5 fl oz - ø 2.36" - h 8.66"



Mami XL - SG119/4000
design Stefano Giovannoni
Decanter.
25.4 fl oz - ø 8.27" - h 8.66"



Mami - SG52/3000
design Stefano Giovannoni
Pitcher.
33.8 fl oz - ø 4.73" - h 10.24"



Glass Family - AJM29/0
design Jasper Morrison
Glass for red wine.
7.8 fl oz - h 2.48"



Glass Family - AJM29/1
design Jasper Morrison
Glass for white wine.
8.5 fl oz - h 3.54"



Glass Family - AJM29/2
design Jasper Morrison
Goblet.
6.8 fl oz - h 5.20"



Glass Family - AJM29/41
design Jasper Morrison
Water tumbler.
10.8 fl oz - h 3.23"



Tonale - DC03/3000
design David Chipperfield
Carafe.
25.4 fl oz - ø 3.74" - h 7.09"



Tonale - DC03/3100
design David Chipperfield
Carafe.
33.8 fl oz - ø 3.94" - h 8.27"

POTS & PANS.

La cintura di Orione

design Richard Sapper



90101

design Richard Sapper
advice Gualtiero Marchesi
Casserole with two handles.
18/10 stainless steel and copper.
90101/20 104.8 fl oz - ø 7.88" - h 3.94"
90101/24 182.6 fl oz - ø 9.45" - h 4.73"



90102

design Richard Sapper
advice Gualtiero Marchesi
Low casserole with two handles.
18/10 stainless steel and copper.
90102/24 91.3 fl oz - ø 9.45" - h 2.36"
90102/28 125.1 fl oz - ø 11.03" - h 2.7"



90105

design Richard Sapper
advice Pierre and Michel Troisgrois
Saucepan.
18/10 stainless steel and copper.
90105/10/C 14.2 fl oz - ø 3.94" - h 2.13"
90105/14 40.6 fl oz - ø 5.51" - h 3.15"



90107

design Richard Sapper
advice Alain Chapel
Sauteuse.
18/10 stainless steel and copper.
90107/20 67.6 fl oz - ø 7.88" - h 2.76"



90108

design Richard Sapper
advice Raymond Thuilier and Jean-André Charial
Oval cocotte.
Cast iron.
192.7 fl oz - 12.60"x9.06" - h 4.53"



90200

design Richard Sapper
advice Gualtiero Marchesi
Lid.
18/10 stainless steel.
90200/14 L ø 5.51" - h 1.58"
90200/16 L ø 6.30" - h 1.58"
90200/20 L ø 7.88" - h 1.58"
90200/24 L ø 9.45" - h 1.58"
90200/28 L ø 11.03" - h 1.58"

Pots&Pans

design Jasper Morrison



AJM100

Stockpot.

18/10 stainless steel.

Magnetic steel bottom suitable for induction cooking.

AMJ100/20 169.1 fl oz - ø 7.88" - h 6.70"

AMJ100/24 297.6 fl oz - ø 9.45" - h 8.07"



AJM101

Casserole with two handles.

18/10 stainless steel.

Magnetic steel bottom suitable for induction cooking.

AJM101/16 54.1 fl oz - ø 6.30" - h 3.54"

AJM101/20 108.2 fl oz - ø 7.88" - h 4.33"

AJM101/24 186 fl oz - ø 9.45" - h 5.12"



AJM102

Low casserole with two handles.

18/10 stainless steel.

Magnetic steel bottom suitable for induction cooking.

AMJ102/24 115 fl oz - ø 9.45" - h 3.35"

AMJ102/28 186 fl oz - ø 11.03" - h 3.94"



AJM105

Saucepan.

AJM105/14 47.3 fl oz - ø 5.51" - h 5.91"

AJM105/16 47.3 fl oz - ø 6.30" - h 4.92"

AJM105/18 65.9 fl oz - ø 7.09" - h 5.32"



AJM110

Frying pan.

18/10 stainless steel.

Magnetic steel bottom suitable for induction cooking.

AJM110/20 33.8 fl oz - ø 7.88" - h 2.95"

AJM110/24 57.5 fl oz - ø 9.45" - h 3.35"

AJM110/28 94.7 fl oz - ø 11.03" - h 3.74"



AJM300

Colander.

18/10 stainless steel mirror polished.

ø 8.66" - h 4.92"



AJM302

Milk boiler.

18/10 stainless steel.

Magnetic steel bottom suitable for induction cooking.

64.2 fl oz - ø 5.51" - h 5.12"



AJM200

Lid.

18/10 stainless steel.

AJM200/14 ø 5.51" - h 0.98"

AJM200/16 ø 6.30" - h 0.98"

AJM200/18 ø 7.09" - h 0.98"

AJM200/20 ø 7.88" - h 0.98"

AJM200/24 ø 9.45" - h 1.38"

AJM200/28 ø 11.03" - h 1.38"



AJM101/20B

Casserole with two handles.

Aluminium with non-stick interior.

Magnetic steel bottom suitable for induction cooking.

ø 7.88"



AJM102/24B

Low casserole with two handles.

Aluminium with non-stick interior.

Magnetic steel bottom suitable for induction cooking.

ø 9.45"



AJM100S7

Cookware set composed of: stockpot (AJM100/20), casserole with two handles (AJM101/20), low casserole with two handles (AJM102/24), saucepan (AJM105/16), 3 lids (AJM200/16, AJM200/20, AJM200/24) in 18/10 stainless steel. Magnetic steel bottom suitable for induction cooking.



AJM105/16B

Saucepan.

Aluminium with non-stick interior.

Magnetic steel bottom suitable for induction cooking.

ø 6.30"



AJM110/24B

Frying pan.

Low casserole with two handles.

Magnetic steel bottom suitable for induction cooking.

ø 9.45"



AJM19S5 L

Kitchen cutlery set: kitchen ladle, kitchen spatula, skimmer, kitchen fork, kitchen spoon.

18/10 stainless steel.



AJM304 B

Grill pan

Aluminium with non-stick interior, black.

Magnetic steel bottom suitable for induction cooking.

11.42"x11.42"



AJM114/28B

Deep frying pan.

Aluminium with non-stick interior.

Magnetic steel bottom suitable for induction cooking.

ø 11.03"



AJM100S6 A

Cookware set composed of casserole with two handles (AJM101/20B), low casserole with two handles (AJM102/24B), saucepan (AJM105/16B), frying pan (AJM110/24B) in aluminium with non-stick interior, black, 2 lids (AJM200/20, AJM200/24) in 18/10 stainless steel.

Edo

design Patricia Urquiola



PU100
Pot.

18/10 stainless steel.
Handles in 18/10 stainless steel with PVD coating.
Magnetic steel bottom suitable for induction cooking.
PU100/20 165.7 fl oz - ø 7.88" - h 7.48"
PU100/24 287.4 fl oz - ø 9.45" - h 8.66"



PU101

Casserole with two handles.
18/10 stainless steel.
Handles in 18/10 stainless steel with PVD coating.
Magnetic steel bottom suitable for induction cooking.
PU101/20 94.7 fl oz - ø 7.88" - h 4.73"
PU101/24 169.1 fl oz - ø 9.45" - h 5.71"



PU102

Low casserole with two handles.
18/10 stainless steel.
Handles in 18/10 stainless steel with PVD coating.
Magnetic steel bottom suitable for induction cooking.
PU102/24 109.9 fl oz - ø 9.45" - h 3.94"
PU102/28 169.1 fl oz - ø 11.03" - h 4.53"



PU105

Saucepan.
18/10 stainless steel.
Handles in 18/10 stainless steel with PVD coating.
Magnetic steel bottom suitable for induction cooking.
PU105/14 33.8 fl oz - ø 5.51" - h 4.33"
PU105/16 44 fl oz - ø 6.30" - h 3.94"



PU113 B
Frying pan.

Aluminium with non-stick interior.
Handle in 18/10 stainless steel with PVD coating.
Magnetic steel bottom suitable for induction cooking.
PU113/20 B 3.8 fl oz - ø 7.88" - h 2.95"
PU113/24 B 42.3 fl oz - ø 9.45" - h 2.95"
PU113/28 B 84.5 fl oz - ø 11.03" - h 3.35"



PU200
Lid.

18/10 stainless steel.
Knob in 18/10 stainless steel with PVD coating.
PU200/14 ø 5.51" - h 1.38"
PU200/16 ø 6.30" - h 1.38"
PU200/20 ø 7.88" - h 1.38"
PU200/24 ø 9.45" - h 1.38"
PU200/28 ø 11.03" - h 1.38"



PU302
Milk boiler.
18/10 stainless steel.
Handle in 18/10 stainless steel with PVD coating.
Magnetic steel bottom suitable for induction cooking.
44 fl oz - 8.07"x4.73" - h 5.12"



PU304
Grill pan.
Cast-iron.
Magnetic steel bottom suitable for induction cooking.
15.75"x9.65" - h 1.77"



PU308
Wok.
Multiply (AISI 430, aluminium, 18/10 stainless steel)
with lid in 18/10 stainless steel.
Handle and knob in 18/10 stainless steel with PVD coating.
Magnetic steel bottom suitable for induction cooking.
196.1 fl oz - ø 13.39" - h 5.32"



PU309
Asparagus steamer with basket and lid.
18/10 stainless steel.
Handles in 18/10 stainless steel with PVD coating.
Magnetic steel bottom suitable for induction cooking.
135.3 fl oz - ø 6.89" - h 10.44"



PU100S7
Cookware set composed of stockpot (PU100/20),
casserole with two handles (PU101/20),
low casserole with two handles (PU102/24), saucepan (PU105/16),
3 lids (PU200/16, PU200/20, PU200/24) in 18/10 stainless steel.
Handles in 18/10 stainless steel with PVD coating.
Magnetic steel bottom suitable for induction cooking.

.ACCESSORIES.



Double - DUL02
design Donato D'Urbino - Paolo Lomazzi
Double wall bowl.
18/10 stainless steel.
DUL02/25 ø 9.85" - h 2.88"
DUL02/32 ø 12.60" - h 3.74"



Double - DUL02
design Donato D'Urbino - Paolo Lomazzi
Double wall bowl.
18/10 stainless steel.
DUL02/25 BT ø 9.85" - h 2.88"
DUL02/32 BT ø 12.60" - h 3.74"



CACTUS! - MSA04
Open-work fruit bowl.
18/10 stainless steel -
steel coloured with epoxy resin.
MSA04/21 ø 8.27" - h 3.74"
MSA04/29 ø 11.42" - h 4.25"



JM17
design Jasper Morrison
Round basket.
Steel coloured with epoxy resin,
with relief decoration.
JM17/21 BT ø 8.27" - h 1.85"
JM17/24 BT ø 9.45" - h 2.36"
JM17/29 BT ø 11.42" - h 2.95"



Barknest - BM10
design Boucquillon & Maoui
Basket.
18/10 stainless steel -
steel coloured with epoxy resin.
BM10/18 ø 7.09" - h 2.56"
BM10/21 ø 8.27" - h 3.94"



PCH02
design Pierre Charpin
Basket.
18/10 stainless steel.
PCH02/15 ø 5.91" - h 1.97"
PCH02/20 ø 7.88" - h 1.97"
PCH02/23 ø 9.06" - h 2.76"



PCH05
design Pierre Charpin
Fruit bowl.
18/10 stainless steel.
PCH05/24 ø 9.45" - h 4.33"
PCH05/30 ø 11.82" - h 4.73"



PCH06
design Pierre Charpin
Oval basket.
18/10 stainless steel.
PCH06/26 10.24"x7.88" - h 2.36"



826
design Ufficio Tecnico Alessi
Wire basket.
18/10 stainless steel.
826/20 ø 8.07" - h 3.03"
826/24 ø 9.65" - h 3.35"



370
design Ufficio Tecnico Alessi
Citrus basket.
18/10 stainless steel.
370 ø 8.06" - h 8.86"
370/19 ø 7.48" - h 7.88"



Anna Gong - AM37
design Alessandro Mendini
Folding cake stand.
18/10 stainless steel.
17.33"x7.88" - h 10.63"



PSJS
design Philippe Starck
Citrus-squeezer.
Aluminium.
ø 5.51" - h 11.42"



Alba - UNS04
design Ben van Berkel / UNStudio
Truffle slicer.
18/10 stainless steel.
7.88"x3.35" - h 3.15"



Taste-huile - PW01
design Lorenzo Piccione di Pianogrillo,
Köbi Wiesendanger
Personal olive oil taster.
18/10 stainless steel.
1.8 fl oz - 6.89"x2.95" - h 2.48"



Ala - AC06
design Achille Castiglioni
Crumb collector.
18/10 stainless steel.
6.30"x1.42"



Scoiattolo - AB13
design Andrea Branzi
Nutcracker.
18/10 stainless steel and wood.
4.73"x2.76" - h 9.4"



ZH03
design Zaha Hadid
Cheese grater.
18/10 stainless steel with base in melamine.
7.88"x5.51" - h 5.51"



Todo - RS08
design Richard Sapper
Giant cheese grater.
Steel and wood.
3.94"x3.94" - h 18.12"



Antechinus - AD01
design Anita Dineen
Cheese knife.
18/10 stainless steel.
7.48"x0.79" - h 1.77"



Dressed in wood - MW23
design Marcel Wanders
Cheese board.
Beech-wood with relief decoration.
ø 16.46" - h 0.79"



Dressed - MW24
design Marcel Wanders
Lid.
Thermoplastic resin and beech-wood.
ø 12.60" - h 6.10"



9088
design Michael Graves
Pepper mill.
18/10 stainless steel and thermoplastic resin.
ø 2.48" - h 5.20"



MGSAL
design Michael Graves
Salt castor.
18/10 stainless steel and thermoplastic resin.
ø 2.48" - h 4.45"



WAL03
William Alsop, Federico Grazzini
Salt, pepper and spice grinder.
Aluminium casting.
ø 2.95" - h 5.59"



CACTUS! - MSA08
design CSA - Marta Sansoni
Pierced paper napkin holder.
18/10 stainless steel.
4.73"x1.18" - h 3.35"



CACTUS! - MSA10
design CSA - Marta Sansoni
Flat napkin holder.
18/10 stainless steel.
8.07"x8.07" - h 1.97"



CACTUS! - MSA29
design CSA - Marta Sansoni
Tea/sugar bag holder.
18/10 stainless steel.
4.57"x2.24" - h 2.17"



MP0210
design Ettore Sottsass
Salt, pepper and spice grinder.
Beech-wood.
ø 2.76" - h 9.06"



ES18
design Ettore Sottsass
Salt, pepper and spice grinder.
Beech-wood.
ø 2.76" - h 4.33"



ES19
design Ettore Sottsass
Salt, pepper and spice grinder.
Beech-wood.
ø 2.76" - h 5.91"



Koki - VS05
design Valerio Sommella
Ice cream scoop.
18/10 stainless steel.
6.93"x2.21"



Big Love - AMMI01CUS4
design Miriam Mirri
4 ice cream spoons.
18/10 stainless steel.
6.70"



Big Love - AMMI01S
design Miriam Mirri
Ice cream bowl and spoon.
18/10 stainless steel and thermoplastic resin.
8.5 fl oz - ø 4.73" - h 5.91"





Circus - MW30

design Marcel Wanders
Glass jar with hermetic lid.
Silk-screen glass and tinplate
MW30/50 16.9 fl oz - ø 4.14" - h 5.12"
MW30/75 25.4 fl oz - ø 4.14" - h 6.30"
MW30/100 33.8 fl oz - ø 4.14" - h 7.48"
MW30/150 50.7 fl oz - ø 4.14" - h 9.65"



Circus - MW31S3

design Marcel Wanders
Three all-purpose boxes.
Tinplate with decoration.
ø 4.41" - h 3.27"
ø 5.67" - h 3.54"
ø 6.93" - h 4.33"



Dressed - MW21

design Marcel Wanders
Glass jar.
Glass and 18/10 stainless steel with relief decoration.
MW21/50 16.9 fl oz - ø 4.14" - h 3.66"
MW21/75 25.4 fl oz - ø 4.14" - h 4.84"
MW21/100 33.8 fl oz - ø 4.14" - h 6.22"
MW21/150 50.7 fl oz - ø 4.14" - h 8.51"



Julieta - LC07, LC08, LC09, LC10

design Lluís Clotet
Glass jar.
Glass and 18/10 stainless steel.
LC07 16.9 fl oz - ø 4.14" - h 3.66"
LC08 25.4 fl oz - ø 4.14" - h 4.84"
LC09 33.8 fl oz - ø 4.14" - h 6.22"
LC10 50.7 fl oz - ø 4.14" - h 8.51"



ES16

design Ettore Sottsass
Glass jar with hermetic lid.
Glass and beech-wood.
ES16/75 25.4 fl oz - ø 4.73" - h 6.70"
ES16/100 33.8 fl oz - ø 4.73" - h 8.07"



.BREAKFAST.





9093

design Michael Graves
Kettle.

18/10 stainless steel and thermoplastic resin.
67.6 fl oz - ø 8.66" - h 8.86"



Tea Rex - 9093REX B
design Michael Graves
Kettle.

18/10 stainless steel and thermoplastic resin.
67.6 fl oz - ø 8.66" - h 8.86"



9091 FM

design Richard Sapper
Kettle.

18/10 stainless steel.
Magnetic steel bottom suitable for induction cooking.
67.6 fl oz - ø 6.50" - h 7.48"



9090

design Richard Sapper
Espresso coffee maker.
18/10 stainless steel.

Magnetic steel bottom suitable for induction cooking.

9090/1 2.4 fl oz - ø 3.74" - h 5.91" (1 cup)
9090/3 5.1 fl oz - ø 4.33" - h 6.89" (3 cups)
9090/6 10.1 fl oz - ø 4.92" - h 8.07" (3 cups)
9090/M 16.9 fl oz - ø 5.71" - h 9.06" (10 cups)

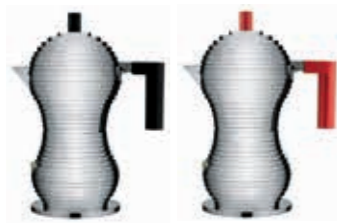


9094

design Aldo Rossi
Press filter coffee maker or infuser.

18/10 stainless steel and heat resistant glass.
9094/3 8.1 fl oz - ø 2.84" - h 6.70" (3 cups)
9094/8 24.3 fl oz - ø 3.86" - h 8.66" (8 cups)





Pulcina - MDL02 - MDL02 FM
design Michele De Lucchi
Espresso coffee maker.

Aluminium and thermoplastic resin.

Magnetic steel bottom suitable for induction cooking (MDL02 FM).
MDL02/1 2.4 fl oz - 4.92"x2.84" - h 6.50 (1 cup)
MDL02/3 - MDL02/3 FM 5.1 fl oz - 5.99"x3.62" - h 7.88" (3 cups)
MDL02/6 - MDL02/6 FM 10.1 fl oz - 7.88"x4.73" - h 10.24" (6 cups)



Pulcina - MDL02 BB
design Michele De Lucchi
Espresso coffee maker.

Aluminium and thermoplastic resin.

MDL02/1 BB 2.4 fl oz - 4.92"x2.84" - h 6.50 (1 cup)
MDL02/3 BB 5.1 fl oz - 5.99"x3.62" - h 7.88" (3 cups)
MDL02/6 BB 10.1 fl oz - 7.88"x4.73" - h 10.24" (6 cups)



Ossidiana - MT18
design Mario Trimarchi
Espresso coffee maker.

Aluminium and thermoplastic resin.

MT18/1 2.4 fl oz - ø 2.76" - h 5.12" (1 cup)
MT18/3 - BB 5.1 fl oz - 4.73"x3.35" - h 6.89" (3 cups)
MT18/6 10.1 fl oz - 5.4"x3.94" - h 8.86" (6 cups)



Anna Spoon - AM19CU
design Alessandro Mendini
Tea spoon.

18/10 stainless steel.
5.12"



826
design Ufficio Tecnico Alessi
Wire basket.

18/10 stainless steel.
826/20 ø 8.07" - h 3.03"
826/24 ø 9.65" - h 3.35"



370
design Ufficio Tecnico Alessi
Citrus basket.

18/10 stainless steel.
370 ø 8.06" - h 8.86"
370/19 ø 7.48" - h 7.88"



Dressed - MW15
design Marcel Wanders
Three-section jam tray.

Porcelain and 18/10 stainless steel.
8.07"x3.15" - h 2.56"



Dressed - MW16
design Marcel Wanders
Butter dish with lid.

Porcelain and 18/10 stainless steel.
ø 4.73" - h 2.99"



Dressed - MW14SET W
design Marcel Wanders
Egg cup. Thermoplastic resin.
Spoon with soft boiled egg opener.
18/10 stainless steel.
ø 1.97" - h 3.23"



Dressed - MW20S2
design Marcel Wanders
Set of two spoons with soft boiled egg opener.
18/10 stainless steel.
4.73"x0.79"



Honey pot - TW01
design CSA - Theo Williams
Honey pot.
Crystalline glass and 18/10 stainless steel.
11.8 fl oz - ø 3.43" - h 7.76"





5070

design Ettore Sottsass
Condiment set: oil, vinegar, salt and pepper.
18/10 stainless steel and crystalline glass.
6.89"x3.15" - h 7.48"



5071

design Ettore Sottsass
Parmesan cheese cellar.
18/10 stainless steel and crystalline glass.
6.8 fl oz - ø 4.33" - h 3.94"



5074/AO

Oil-vinegar cruet.
18/10 stainless steel and crystalline glass.
6.8 fl oz - ø 2.05" - h 6.50"



5075

design Ettore Sottsass
Salt castor.
18/10 stainless steel and crystalline glass.
1.2 fl oz - ø 1.38" - h 3.94



5076

design Ettore Sottsass
Pepper castor.
18/10 stainless steel and crystalline glass.
1.2 fl oz - ø 1.38" - h 3.94



We have always specialized in the specific ambit of bar and wine service objects. The 870 cocktail shaker is one of the very first Alessi objects designed by external designers and now on the counters of bars throughout the world. One truly unique collection are the professional bar and wine articles, designed by Ettore Sottsass in 1979 with advice by Alberto Gozzi, taking a cue from the perfect cocktails prepared with such expertise by David Niven in those fifties movies.

We have been working more recently on a new series of products, which has been entrusted to a number of designers. Among them, "Bolly", the wine cooler designed by Jasper Morrison, was developed in collaboration with the well-known French champagne producer, Bollinger of Ay.

Alberto Alessi

.BAR & WINES.



L 870/50
Cocktail shaker.
18/10 stainless steel.
1.69 fl oz - h 7.88"



Lunar Eclipse - 5050SET I
design Ettore Sottsass
Set composed of American or "Boston"
shaker, bar strainer, stirrer and cocktail measure.
18/10 stainless steel.



505
design Ufficio Tecnico Alessi
Ice tongs.
18/10 stainless steel.
6.30"



Noè - GIA12
design Giulio Iacchetti
Wine and champagne bottle stopper.
18/10 stainless steel.
ø 2.17" - h 2.36"



Mateglacé - MSA11
design LPWK - Marta Sansoni
Double wall vacuum bottle stand.
18/10 stainless steel.
44 fl oz - ø 4.92" - h 7.09"



L 871

design Luigi Massoni - Carlo Mazzeri
By appointment A.I.B.E.S. e A.I.S.
Ice bucket.
18/10 stainless steel.
42.3 fl oz - ø 4.92" - h 4.73"



5051

design Ettore Sottsass
By appointment A.I.B.E.S. e A.I.S.
Ice bucket.
18/10 stainless steel.
50.7 fl oz - ø 5.71" - h 5.51"



5052

design Ettore Sottsass
By appointment A.I.B.E.S. e A.I.S.
Wine cooler.
18/10 stainless steel.
236.7 fl oz - ø 9.85" - h 9.06"



Bolly - JM21

design Jasper Morrison
Wine cooler.
18/10 stainless steel.
121.7 fl oz - ø 8.66" - h 8.86"



Chiringuito Cooler - ARA07 I

design Ron Arad
Wine cooler.
Thermoplastic resin.
135.3 fl oz - 11.82"x5.91" - h 16.94"



Noè - GIA17

design Giulio Iacchetti
Ice tub.
18/10 stainless steel.
ø 13.00" - h 7.88"



5059

design Ettore Sottsass, consulenza Alberto Gozzi
Wine cooler stand.
18/10 stainless steel.
ø 9.45" - h 25.21"



JM26

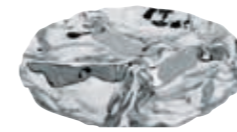
design Jasper Morrison
Wine cooler stand.
18/10 stainless steel.
ø 24.81" - h 11.03"



Noè - GIA13

design Giulio Iacchetti
Modular bottle-holder (6 bottles).
Thermoplastic resin.
13.59"x6.10" - h 10.63"





Pepa - LC14
design Lluís Clotet
Four-section hors-d'oeuvre dish.
18/10 stainless steel.
ø 12.72" - h 1.58"



Noè - GIA11
design Giulio Iacchetti
Drop ring.
18/10 stainless steel and thermoplastic resin.
2.24"x1.73" - h 0.39"



Anna G. - AAM01
design Alessandro Mendini
Corkscrew.
Thermoplastic resin
and chrome-plated zamak.
ø 2.76" - h 9.65"



Anna G. "Galla Placidia" - AM01 100
design Alessandro Mendini
Corkscrew.
Thermoplastic resin
and chrome-plated zamak.
ø 2.76" - h 9.65"



Anna G. - AM01 Z
design Alessandro Mendini
Corkscrew.
Chrome-plated zamak.
ø 2.76" - h 9.65"



Alessandro M. - AAM23
design Alessandro Mendini
Corkscrew.
Thermoplastic resin and chrome-plated zamak.
ø 2.36" - h 8.27"



Alessandro M. "Galla Placidia" - AM23 100
design Alessandro Mendini
Corkscrew.
Thermoplastic resin and chrome-plated zamak.
ø 2.36" - h 8.27"



Parrot - AAM32
design Alessandro Mendini
Sommelier corkscrew.
Licensed by Pulltaps.
Thermoplastic resin and chrome-plated zamak.
1.18"x0.98" - h 5.12"



Socrates - JM06
design Jasper Morrison
Corkscrew.
18/10 stainless steel.
4.53"x1.34" - h 5.51"



Diabolix - ABC01
design CSA - Biagio Cisotti
Bottle opener.
Thermoplastic resin.
7.09"x2.17"



.MEETING & BREAK ROOMS.



Plissé - MDL06
design Michele De Lucchi
Electric kettle.
Thermoplastic resin.
57.5 fl oz - 8.27"x6.30" - h 11.42"



Plissé - MDL06/1
design Michele De Lucchi
Electric kettle.
Thermoplastic resin.
33.8 fl oz - 8.27"x6.30" - h 7.88"



Plissé - MDL07
design Michele De Lucchi
Electric citrus-squeezer.
Thermoplastic resin.
ø 7.29" - h 11.03"



Plissé - MDL08
design Michele De Lucchi
Toaster.
Thermoplastic resin.
13.39"x7.48" - h 7.48"



Pulcina - MDL09
design Michele De Lucchi
Blender.
Thermoplastic resin.
Graduated pitcher in thermoplastic resin (PCTG).
50.7 fl oz - 9.26"x7.29" - h 16.74"



Pulcina - MDL10S
design Michele De Lucchi
Hand blender with measuring jug,
Whisk and chopper in thermoplastic resin (PCTG).
ø 2.76" - h 13.39"





Bark - BM01
design Boucquillon & Maaoui
Centrepiece.
18/10 stainless steel -
steel coloured with epoxy resin.
20.28"x7.68" - h 1.97"



Barknest - BM02
design Boucquillon & Maaoui
Basket.
18/10 stainless steel -
steel coloured with epoxy resin.
ø 8.27" - h 2.76"



Barknest - BM10
design Boucquillon & Maaoui
Basket.
18/10 stainless steel -
steel coloured with epoxy resin.
BM10/18 ø 7.09" - h 2.56"
BM10/21 ø 8.27" - h 3.94"



Anna Gong - AM37
design Alessandro Mendini
Folding cake stand.
18/10 stainless steel.
17.33"x7.88" - h 10.63"



Dressed - MW52/3
design Marcel Wanders
Three-dish cake stand.
18/10 stainless steel with relief decoration.
ø 13.78" - h 12.21"



Niche - ZH02
design Zaha Hadid
Centrepiece with interposable elements.
Melamine.
23.63"x11.82" - h 2.76"



Nomu - NF05
design Naoto Fukasawa
Double wall thermo insulated jug.
18/10 stainless steel and thermoplastic resin.
33.8 fl oz - 6.70"x4.61" - h 11.42"



Tua - MB03
designer Mario Botta
Pitcher.
18/10 stainless steel. Handle in PA, black.
33.8 fl oz - 5.91"x3.54" - h 11.42"





Piana - ASPN7032 - ASPN9017 - ASPN3027 - ASPN9001
 design David Chipperfield
 Folding and stackable chair.
 PP and fiberglass.
 20.48"-18.12" - h 35.45"



Plico - RS11 B
 design Richard Sapper
 Folding trolley.
 Steel coloured with epoxy resin, black. Shelves in polyurethane.
 33.87"x18.12" - h 30.72"



Blow Up - FC07
 design Fratelli Campana
 Umbrella stand.
 Chrome-plated steel.
 ø 13.00" - h 19.69"



Blow Up - FC09
 design Fratelli Campana
 Small table.
 Chrome-plated steel and glass top.
 ø 17.72" - h 17.33"



Blow Up - FC15
 design Fratelli Campana
 Magazine holder.
 Chrome-plated steel.
 17.92"x11.22" - h 13.78"



.GUEST SUITES & LOBBY.



Crevasse - ZH01
 design Zaha Hadid
 Flower vase.
 18/10 stainless steel.
 3.15"x2.36" - h 16.54"



Momento - 11
 design Aldo Rossi
 Wall clock.
 18/10 stainless steel. Quartz movement.
 ø 15.75" - h 2.56"



Dédé - PS18
 design Phippe Starck
 Doorstop.
 Thermoplastic resin.
 6.89"x6.50" - h 6.89"



Op-la - JM12 DG
 design Jasper Morrison
 Tray/table.
 18/10 stainless steel and thermoplastic resin.
 ø 18.91" - h 20.48"



Juicy Salif XXL - PSJS XXL
 design Philippe Starck
 Juicy Salif XXL in polyethylene.
 27.57"x31.51" - h 73.65"



Big love XXL - MMI08 XXL
 design Miriam Mirri
 Big love XXL in polyethylene.
 14.97"x7.48" - h 63.02"



Birillo - PL03
design Piero Lissoni
Toothbrush holder.
Thermoplastic resin.
3.74"x3.74" - h 4.33"



Birillo - PL04
design Piero Lissoni
Soap dish.
Thermoplastic resin
and 18/10 stainless steel.
4.33"x4.33" - h 1.18"



Birillo - PL05
design Piero Lissoni
Liquid soap dispenser.
Thermoplastic resin
and 18/10 stainless steel.
10.1 fl oz - 4.53"x3.74" - h 5.32"



Birillo - PL07
design Piero Lissoni
Tissue box.
Thermoplastic resin.
9.45"x5.12" - h 3.15"



Birillo - PL10
design Piero Lissoni
Bathroom waste bin.
Thermoplastic resin.
7.29"x7.29" - h 8.27"



Birillo - PL11
design Piero Lissoni
Bathroom container.
Thermoplastic resin.
7.09"x7.09" - h 2.56"



Birillo - PL14
design Piero Lissoni
Liquid soap dispenser.
Thermoplastic resin.
6.8 fl oz - 3.15"x2.60" - h 6.50"



Birillo - PL15
design Piero Lissoni
Tissue box.
Thermoplastic resin.
5.91"x5.91" - h 5.91"



Birillo - PL16
design Piero Lissoni
Shower/bathroom caddy.
Thermoplastic resin.
7.48"x5.91" - h 3.15"



Birillo - PL17
design Piero Lissoni
Bathroom organizer.
Thermoplastic resin.
7.09"x7.09" - h 4.73"



Birillo - PL18
design Piero Lissoni
Toilet paper roll container.
Thermoplastic resin.
5.91"x5.91" - h 12.21"



Birillo - PL08
design Piero Lissoni
Toilet brush.
Thermoplastic resin and 18/10 stainless steel.
4.14"x4.14" - h 16.54"

.COLLABORATIONS.**.La Cintura di Orione,
design Richard Sapper, 1986.**

Our consultant chefs not only provided the general advice on which the overall concept for the entire range was based, but also selected one or more pots, according to their culinary specialities, and worked closely with Sapper in designing each one. Alain Chapel, a great authority on sauces, was responsible for the Sauteuse with flared sides; the Troisgros, founders of nouvelle cuisine, worked on the Frying pans, the Saucepan and the Cassolette; Raymond Thuilier, living legend of French cuisine, collaborated with his valuable advice on the oval Casserole; Roger Vergé, who has successfully combined nouvelle cuisine with Mediterranean cooking, gave his own special touch to the Fish Poacher with rack; Gualtiero Marchesi helped us to create the Stockpot and Casseroles with two handles, with great ingenious; and Angelo Paracucchi, a leading exponent of Mediterranean cooking, worked on the Flambé Lamp and Pan, giving them a completely new contemporary line.

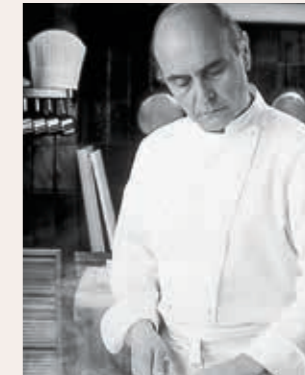
GUALTIERO MARCHESI



ANGELO PARACUCCHI



ALAIN CHAPEL



ALBERTO GOZZI



MICHEL TROISGROS



PIERRE TROISGROS



RAYMOND THUILIER



ROGER VERGE



.Alessi is partner of Gault&Millau.

The successful collaboration between Alessi and Gault&Millau, one of the most renowned French gastronomy, restaurants and wines guides, has led to the production of the Gault&Millau plates.

The metal objects were inspired in the shape to the Alessi most iconic products and were of the same yellow colour which identifies the publication. The plates, given as award to the best selected cooks, restaurateurs and sommeliers, were displayed by the restaurants mentioned in the guide.



.ALESSI FOR DELTA.

Alessi for Delta Collection: One-Of-A-Kind, Design Serviceware at 30,000 feet. The 86-piece collection marks first major airline collaboration. Alessi has partnered with Delta Air Lines to curate a modern, stylish and functional collection of service products and tableware, inspired by its designer retail lines. Alessi has brought its one-of-a-kind pieces to Delta's premium Cabins. The Alessi for Delta products include flatware, crystal glassware, new bone china, stainless steel serving pieces and tabletop accessories such as napkin rings and salt and pepper shakers, as well as serviceware and trays.

"When you design for an airline there are several aspects to be considered and all of them are important. The most challenging step was finding the right balance between design and function while ensuring safety on board." Alberto Alessi



.ALESSI FOR GREY GOOSE.

GREY GOOSE® Vodka has collaborated with Alessi to create a limited edition of the Alessi "Lunar Eclipse" mixing kit. The cocktail kit was created under the guidance of internationally renowned mixologist Oscar Quagliarini and is exclusively customised for GREY GOOSE. Crafted in stainless steel, the "Lunar Eclipse" mixing kit was inspired by the lunar universe, and includes elements of refined shiny finishes that spread bright silvery glare. This kit includes the famous Boston shaker, designed by Ettore Sottsass, a cocktail measure, bar strainer, stirrer and a bottle of GREY GOOSE Vodka.

.ALESSI FOR CAMPARI.

Campari Soda - the iconic aperitif brand - and Alessi combine their passion for art and design, inaugurating an exclusive collaboration with an innovative aperitif kit: 4 small bottles of Campari Soda, a napkin holder and a bottle opener created exclusively by Alessi for this collaboration. The articles are inspired by the iconic shape of the small Campari Soda bottle, with the aim of creating the perfect design set for an aperitif at home.



11	89	90101	49	AM01 Z	81	L 870/50	75	MW03/9	25	REB09/7	21
370	59 - 68	90102	49	AM19CU	68	L 871	76	MW03/10	25	REB09/8	21
4180/1	17	90105	49	AM23 100	79	LC07	62	MW03/11	25	REB09/9	21
4180/2	17	90107	49	AM37	60 - 84	LC08	62	MW03/12	25	REB09/14	21
4180/3	17	90108	49	AMMI01CUS4	61	LC09	62	MW03/14	25	REB09/15	21
4180/4	17	90200	49	AMMI01S	61	LC10	62	MW03/15	25	REB09/16	21
4180/5	17	AAM01	79	ARA07 I	76	LC14	79	MW03/16	25	REB09S5	21
4180/6	17	AAM23	79	ASP3027	86	LCD01/1	23	MW03/35	25	REB09S24	21
4180/7	17	AAM32	79	ASP7032	86	LCD01/2	23	MW03/37	25	RS08	62
4180/8	17	AB13	61	ASP9001	86	LCD01/2R4	23	MW03S5	25	RS11 B	86
4180/9	17	ABC01	79	ASP9017	86	LCD01/3	23	MW03S24	25	SG119/0S4	47
4180/9S4	17	AC06	61	BG02/1	29	LCD01/3M	23	MW14SET W	68	SG119/1S4	47
4180/11	17	AD01	60	BG02/2	29	LCD01/4	23	MW15	68	SG119/3S4	47
4180/13	17	AGV29/1	42	BG02/3	29	LCD01/5	23	MW16	68	SG119/9S4	47
4180/14	17	AGV29/2	42	BG02/5	29	LCD01/6	23	MW20S2	68	SG119/4000	47
4180/15	17	AGV29/3	42	BG02/6	29	LCD01/6M	23	MW21	62	SG38/1	27
4180/16	17	AGV29/5	42	BG02/7	29	LCD01/7	23	MW23	61	SG38/2	27
4180/17	17	AGV29/76	42	BG02/8	29	LCD01/8	23	MW24	61	SG38/3	27
4180/18	17	AGV29/77	42	BG02/14	29	LCD01/10	23	MW30	62	SG38/3M	27
4180/22	17	AGV29/78	42	BG02/15	29	LCD01/11	23	MW31S3	62	SG38/4	27
4180/23	17	AGV29/79	42	BG02/34S4	29	LCD01/12	23	MW52/3	84	SG38/5	27
4180/27	17	AGV29/89	42	BG02/37S4	29	LCD01/13	23	MW72/1 WG	35	SG38/6	27
4180/31	17	AGV29/3820	42	BG02S24	29	LCD01/14	23	MW72/2 LG	35	SG38/6M	27
4180S24	17	AGV29/3825	42	BM01	84	LCD01/15	23	MW72/5 W	35	SG38/7	27
4180S30	17	AJM19S5 L	52	BM02	84	LCD01/16	23	MW72/22 LG	35	SG38/8	27
505	75	AJM22/1	20	BM10	59 - 84	LCD01/17	23	MW72/38 WG	35	SG38/9	27
5050SET I	75	AJM22/2	20	DC03/1 LG	39	LCD01/18	23	MW72/54 W	35	SG38/10	27
5051	76	AJM22/3M	20	DC03/2 LG	39	LCD01/22	23	MW72/76 LG	35	SG38/11	27
5052	76	AJM22/4	20	DC03/3 LG	39	LCD01S24	23	MW72/77 W	35	SG38/12	27
5059	76	AJM22/5	20	DC03/5 LG	39	LCD01S24M	23	MW72/89 WG	35	SG38/14	27
5070	70	AJM22/6M	20	DC03/34	39	LCD01S24R	23	MW73/41	35	SG38/15	27
5071	70	AJM22/7	20	DC03/38 LG	39	MB03	84	MW73/3000	35	SG38/16	27
5074/AO	70	AJM22/8	20	DC03/41 LG	39	MDL02	68	MW74S16 B	35	SG38/17	27
5075	70	AJM22/9	20	DC03/54 LG	39	MDL02 BB	68	MW75 SET	35	SG38/18	27
5076	70	AJM22/14	20	DC03/76 LG	39	MDL02 FM	68	NF05	84	SG38S24	27
5180/1	19	AJM22/15	20	DC03/77 LG	39	MDL06	82	PCH02	59	SG38S24M	27
5180/2	19	AJM22/16	20	DC03/78 LG	39	MDL06/1	82	PCH05	59	SG52/3000	47
5180/3	19	AJM22S24M	20	DC03/94 LG	39	MDL07	82	PCH06	59	SG53/1	36
5180/3M	19	AJM28/1	41	DC03/95 LG	39	MDL08	82	PL03	91	SG53/2	36
5180/4	19	AJM28/2	41	DC03/96 LG	39	MDL09	82	PL04	91	SG53/3	36
5180/5	19	AJM28/5	41	DC03/3000	39 - 47	MDL10S	82	PL05	91	SG53/5	36
5180/6	19	AJM28/22	41	DC03/3100	39 - 47	MGSAL	60	PL07	91	SG53/38	36
5180/6M	19	AJM28/54	41	DUL02	59	MMI08 XXL	89	PL08	91	SG53/54	36
5180/7	19	AJM28/76	41	ES16	62	MP0210	60	PL10	91	SG53/76	36
5180/8	19	AJM28/77	41	ES18	60	MS04	59	PL11	91	SG53/77	36
5180/9	19	AJM28/78	41	ES19	60	MSA08	61	PL14	91	SG53/78	36
5180/10	19	AJM28/79	41	FC07	86	MSA10	61	PL15	91	SG53/79	36
5180/11	19	AJM28/89	41	FC09	86	MSA11	75	PL16	91	SG53/87	36
5180/12	19	AJM28/3821	41	FC15	86	MSA29	61	PL17	91	SG53/88	36
5180/13	19	AJM28/3826	41	FM10/1	45	MT18	68	PL18	91	SG53/90	36
5180/14	19	AJM29/0	47	FM10/2	45	MW01/1	33	PS18	89	TI04/1	28
5180/15	19	AJM29/1	47	FM10/5	45	MW01/2	33	PSJS	60	TI04/2	28
5180/16	19	AJM29/2	47	FM10/10 B	45	MW01/3	33	PSJS XXL	89	TI04/3	28
5180/17	19	AJM29/41	47	FM10/38	45	MW01/5	33	PU100	55	TI04/5	28
5180/18	19	AJM100	51	FM10/54 H	45	MW01/21	33	PU100S7	57	TI04/8	28
5180/19	19	AJM100S6 A	53	FM10/54 S	45	MW01/38	33	PU101	55	TI04S24	28
5180/20	19	AJM100S7	52	FM10/76	45	MW01/54	33	PU102	55	TW01	68
5180/22	19	AJM101	51	FM10/77	45	MW01/76	33	PU105	55	UNS04	60
5180/23	19	AJM101/20B	53	FM10/77 B	45	MW01/77	33	PU113 B	55	VS05	61
5180/25	19	AJM102	51	FM10/78	45	MW01/78	33	PU200	55	WAL03	60
5180/26	19	AJM102/24B	53	FM10/79	45	MW01/79	33	PU302	57	ZH01	89
5180S24	19	AJM105	51	FM10/79 B	45	MW01/89	33	PU304	57	ZH02	84
5180S24M	19	AJM105/16B	53	GIA11	79	MW01/94	33	PU308	57	ZH03	60
5180S30	19	AJM110	51	GIA12	75	MW03/1	25	PU309	57		
826	59 - 68	AJM110/24B	53	GIA13	76	MW03/2	25	PW01	61		
9088	60	AJM114/28B	53	GIA17	76	MW03/3	25	REB09/1	21		
9090	66	AJM200	52	JM06	79	MW03/4	25	REB09/2	21		
9091 FM	66	AJM300	51	JM12 DG	89	MW03/5	25	REB09/3	21		
9093	66	AJM302	52	JM17	59	MW03/6	25	REB09/4	21		
9093REX B	66	AJM304B	52	JM21	76	MW03/7	25	REB09/5	21		
9094	66	AM01 100	79	JM26	76	MW03/8	25	REB09/6	21		



Alessi Inc.
41 Madison Avenue, Suite 801
New York, NY 10010



ALESSI

ALESSI.COM