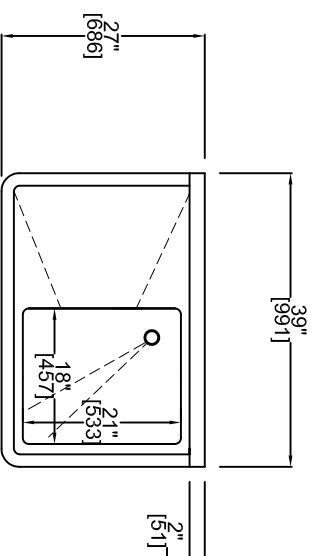


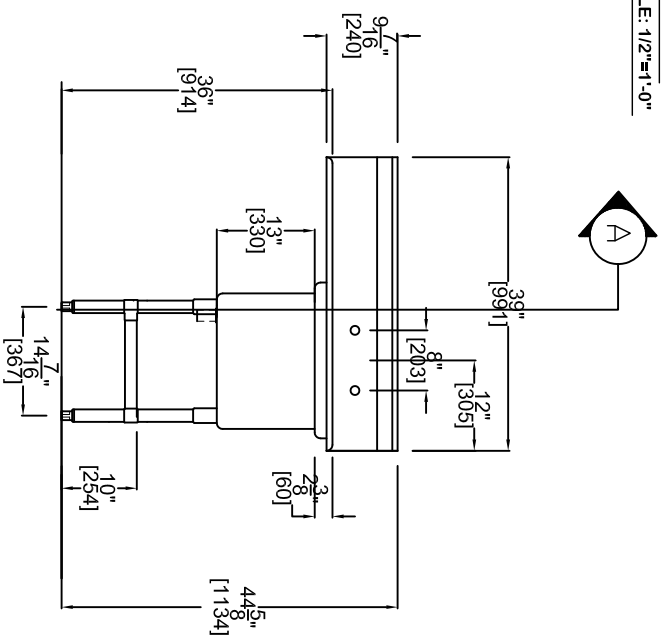
CONSTRUCTION OF 1 COMPT. SINK c/w L HAND SIDE DRAINBOARD.

MODEL: MA-S1821-1-L18
CONSTRUCTED: 18ga. S.STEEL 304 FINISH
1 5/8" dia. LEGS and BRACES 16ga. GALVANIZED
c/w ADJUSTABLE BULLET FEET
SINK: 18"x21"x13" dp. ALL COVERED CORNERS
SINK SLOPE TO 2" dia. CORNER DRAINS.
DRAIN c/w REMOVABLE STOPPER.
REAR SPLASH TO ACCOMODATE 8" c/c TYPICAL FAUCET
DRAINBOARD SLOPE TOWARDS THE SINK
1 1/2" dia. EXTERIOR DRAIN (TYPICAL NORTH AMERICAN)



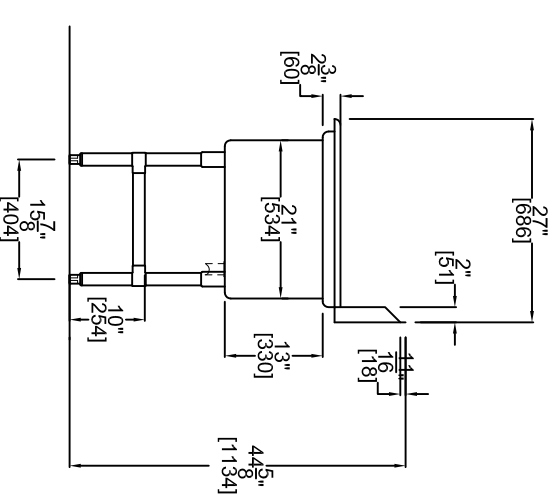
PLAN

SCALE: 1/2"=1'-0"



ELEVATION

SCALE: 1/2"=1'-0"



SECTION A

SCALE: 1/2"=1'-0"

MODEL
MA-S1821-1-L18

REVISION:

PROJECT NAME:
VARIES

DATE:
NOV. 17, 2017

ITEM DESCRIPTION:
MA-S1821-1-L18

REVISION:

SCALE:
1/2"=1'-0"

ITEM DESCRIPTION:
1 COMPT. SINK/DB

PAGE:
1 of 1

SHEET NO.:
1



880 Milner Avenue
 Toronto, Ontario, Canada
 M1B 5N7
 416 321-5823
 Toll Free: 1 (866) 722-2649
 www.rabcofoodservice.com