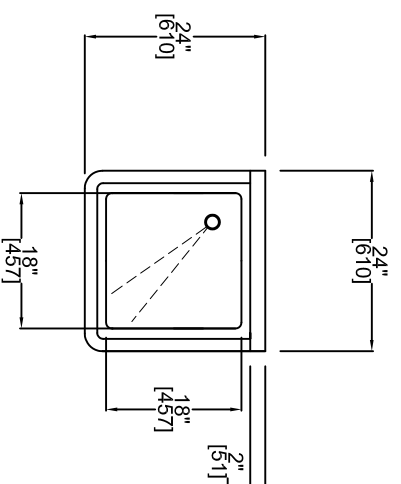
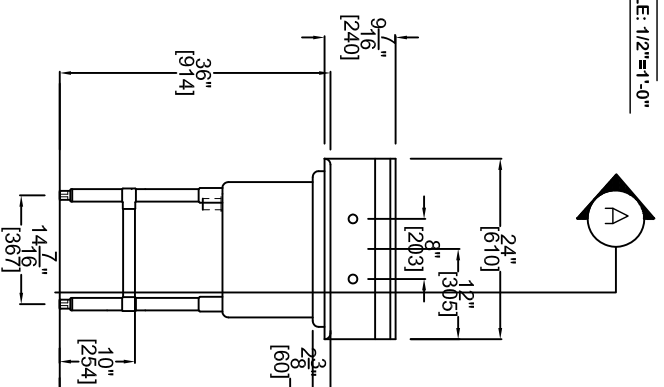


CONSTRUCTION OF 1 COMPARTMENT SINK.



PLAN

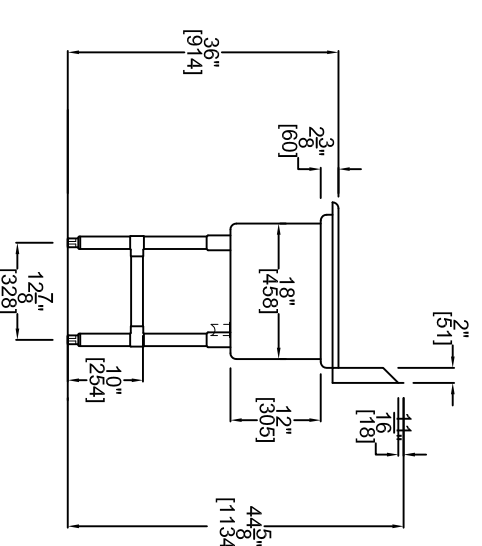
SCALE: 1/2"=1'-0"



ELEVATION

SCALE: 1/2"=1'-0"

MODEL: MA-S1818-1-0
CONSTRUCTED: 18ga. S.STEEL 304 FINISH
1 5/8" dia. LEGS and BRACES 16ga. GALVANIZED
c/w ADJUSTABLE BULLET FEET
SINK: 18"x18"x12" dp. ALL COVERED CORNERS
SINK SLOPE TO 2" dia. CORNER DRAINS.
DRAIN c/w REMOVABLE STOPPER.
REAR SPLASH TO ACCOMODATE 8" c/c TYPICAL FAUCET
1 1/2" dia. EXTERIOR DRAIN (TYPICAL NORTH AMERICAN)



SECTION A

SCALE: 1/2"=1'-0"

MODEL
MA-S1818-1-0

REVISION:

PROJECT NAME:	880 Milner Avenue Toronto, Ontario, Canada M1B 5N7 416 321-5823 Toll Free: 1 (866) 722-2649 www.rabcofoodservice.com	DATE:	NOV. 17, 2017	MODEL	MA-S1818-1-0	REVISION:	
	VARIES	SCALE:	1/2" - 1'-0"	ITEM DESCRIPTION:	1 COMPT. SINK	PAGE:	1 of 1
						SHEET No.:	1

