


TANKS FOR THE
NEXT GENERATION



ROTH MultiTank®

Call 866-943-7256 or visit our web site at www.roth-america.com

ROTH MultiTank®

Setting the standards for all other tanks. The Roth MultiTank® offers undisputed best-in-class status and the highest brand recognition of any tank in the market. The only tank you will ever need.

ROTH MultiTank® Features

- **Multi Usage**

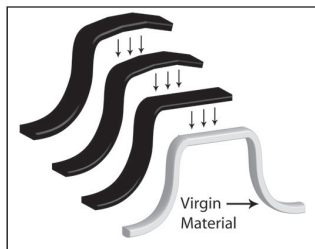
For water cistern, pump, holding, rainwater or septic tank

- **Multi Layer**

Inner layer of FDA approved virgin HDPE, two inside layers of PE for improved stability, plus one outer layer of black and UV-stabilized PE

- **Multi Coverage**

Lifetime* Corrosion Protection and 5 years of Labor Insurance Coverage**



Our multi-layered tank construction, consisting of virgin material surrounded by 3 layers of protection.



* Lifetime is the expected service life. See warranty for details.

**Coverage on workmanship and product cost, which includes the replacement and excavation of tank, up to \$2,500. This is subject to proper installation according to Roth's installation manual and the installer must be certified by a Roth Representative. Please contact us for more information on joining our elite group of certified installers.



ROTH MultiTank® ACCESSORIES

Distribution Box

- 12-hole distribution box, allows for parallel pipe runs on 4 sides
- Invert drop of 2" between inlet and outlet pipes
- 24" I.D. provides plenty of elbow room during installation, leveling and maintenance
- Basin can be weighted with aggregate to maintain level
- Bring to grade using the *Star*® threaded riser system
- Includes a Star-24L (threaded lid), gasket and security seal



STAR-24DB11

Riser System

- 24" I.D. Threaded STAR® Riser
- Maximum versatility in the field
- Watertight connection
- Extra-strong flat top design
- Unique anti-slip surface
- Easily secured against unauthorized entry
- Excellent for retrofit or cast-in



#STAR-24L, 24R6, or 24R12

Accessories

- 2", 3", 4" and 6" Pipe Seals, ASTM C923 Approved #PG2,3,4,6
- Riser Gasket (not shown) #RG24
- Partition Assembly (not shown) #PA
- Butyl Mastic (not shown) #TJ-CS102(tank-riser), RJ-CS212 (riser-riser)
- Security Seal #SSLOCK



#SSLOCK



#PG2,3,4,6



ROTH MultiTank® ACCESSORIES

Plug Covers: Fits 18" & 24" Pipes

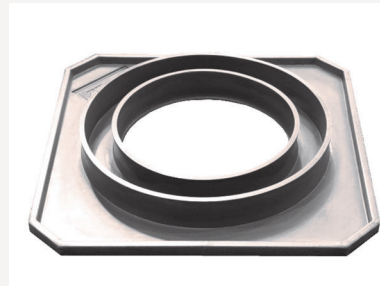
- Maximum versatility in the field
- Extra-strong flat-top design
- Unique anti-slip surface
- Easily secured against unauthorized entry
- Excellent for riser retrofit
- Fits all major manufacturer's 18" & 24" pipes
- Gasket and two security seals included



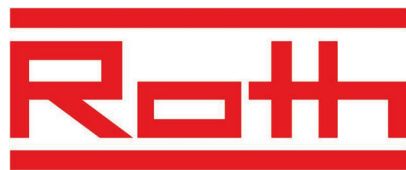
STAR-18P or 24P

Tank Adapter

- Can be added retrofit to ready-access riser system on an existing septic tank
- Up to 24" round or square openings can be covered without sheet metal or mortar
- Fits 18" or 24" diameter corrugated pipe or the STAR® threaded riser system
- Secure mechanical *Stay-put* system prevents shifting and maintains integrity



STAR-18TA or 24TA



WARRANTY: Roth Global Plastics Inc. warrants the accessories for a period of five years from date of purchase against any manufacturing defects, providing the accessory has been used and installed in accordance with manufacturers written instructions. Roth Global Plastics Inc. will, at its option, repair or replace any accessory deemed to be defective and Roth Global Plastics' obligations under this warranty are strictly limited to the repair and/or replacement of the defective accessory. Roth Global Plastics Inc. assumes no liability in cases of improper installation or misuse. Roth Global Plastics Inc. is not responsible for any resulting contingent liabilities or charges. This warranty applies only to the original accessory installation.

WHY ROTH? WHY BLOW MOLDING?

High tech. High quality. High time.

Not all tanks are created equal.

Roth's revolutionary process changes everything.

High Tech

State-of-the-art computer controlled multi-layer blow molding process produces perfect parts. Repeatable process, repeatable field performance you can trust.

High Quality

This is not your father's tank. Roth tanks are the finest money can buy... and tens of thousands do!

High Time

After decades of conventional technology, Roth brings 35 years of blow molding experience to the North American market. In fact, 1 out of every 2 tanks in Europe is of blow-molded construction.



Environmentally Sound

- 100% of scrap is recycled and reused
- The most environmentally-sound methods available (no air, water or solid waste discharge as a result of our process)

Less Worries

- No cracking
- No corrosion
- Watertight
- Higher life expectancy
- Strongest poly tank on the market
- HDPE — the most chemically-resistant material in the world
- True structural integrity
- Quality of tanks are above European standards

Easier Handling

- Lightweight
- Simple, user-friendly installation
- No water backfill required
- Multi-port inlet/outlet
- Versatile — suitable for septic, pump, and cistern applications
- Roth offers all accessories to complete a whole system, including the popular STAR® riser systems



ROTH MultiTank® PRODUCT DETAILS

MODEL (MultiTank)	DESIGN CAPACITY US Gallons (Liters)	TOTAL CAPACITY US Gallons (Liters)	ACTUAL CAPACITY US Gallons (Liters) 40"/42" Liquid level	HEIGHT Inches (mm)	WIDTH Inches (mm)	LENGTH Inches (mm)	WEIGHT Pounds (kilogram)
RMT-300 (single layer)	300 (1136)	325 (1230)	273 (1033)/284 (1075)	54 (1372)	45 (1143)	50 (1270)	120 (54.43)
RMT-500	500 (1893)	535 (2025)	452 (1710)/474 (1794)	51 (1295)	62 (1575)	60 (1524)	225 (102.06)
RMT-750	750 (2840)	1000 (3785)	853 (3229)/898 (3399)	51 (1295)	62 (1575)	103 (2616)	360 (163.29)
RMT-900	900 (3407)	1161 (4394)	990 (3747)/1028 (3891)	51 (1295)	62 (1575)	118 (2997)	450 (204.12)
RMT-1000E	1000 (3785)	1161 (4394)	990 (3747)/1028 (3891)	51 (1295)	62 (1575)	118 (2997)	450 (204.12)
RMT-1060	1060 (4012)	1337 (5061)	1177 (4455)/1227 (4645)	51 (1295)	62 (1575)	133 (3378)	520 (235.87)
RMT-1250	1250 (4730)	1469 (5560)	1259 (4766)/1319 (4992)	51 (1295)	62 (1575)	148 (3759)	560 (254.01)
RMT-1500	1500 (5678)	1771 (6703)	1540 (5830)/1601 (6060)	51 (1295)	62 (1575)	177 (4496)	640 (290.30)

Call 1.866-943-7256 or visit www.roth-america.com for additional information and product lines.



Roth, a family-owned business established in Germany 60 years ago, now operates in 29 countries worldwide with \$250 million in sales and 1,100 employees. The North American division operates two manufacturing plants in upstate New York. Roth specializes in environmentally-friendly products that produce, distribute and store energy for the finest homes.



ENERGY PRODUCTION:

Solar and Heat Pump Systems

ENERGY STORAGE:

Septic, Cistern, Rainwater Collection and Oil Storage Tanks

ENERGY DISTRIBUTION:

Roth Global Plastics Corporate Office

P.O. Box 245, Syracuse, NY 13211 Toll Free US: 866.943.7256
P: 315.475.0100 F: 315.475.0200 sales@roth-usa.com www.roth-america.com

Distributed by: