

ill^ominate

ILLUMINATECO

PRODUCT GUIDE

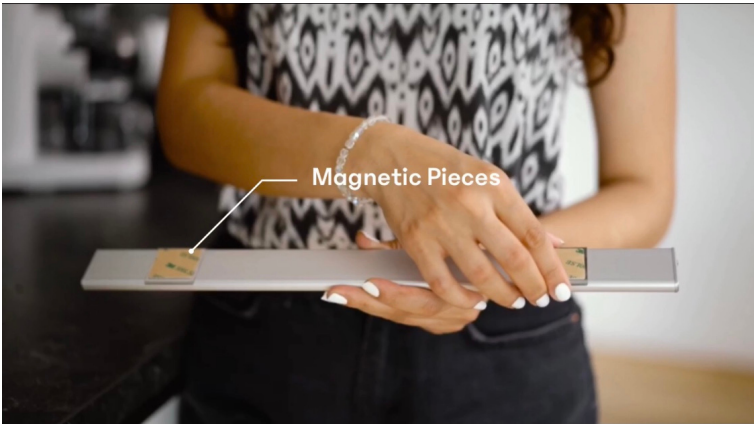
A COMPREHENSIVE GUIDE FOR **EVERYTHING**
YOU NEED TO KNOW ABOUT OUR PRODUCTS,
INSTALLATION & MORE!

@TRYILLUMINATE
TRYILLUMINATE.CO



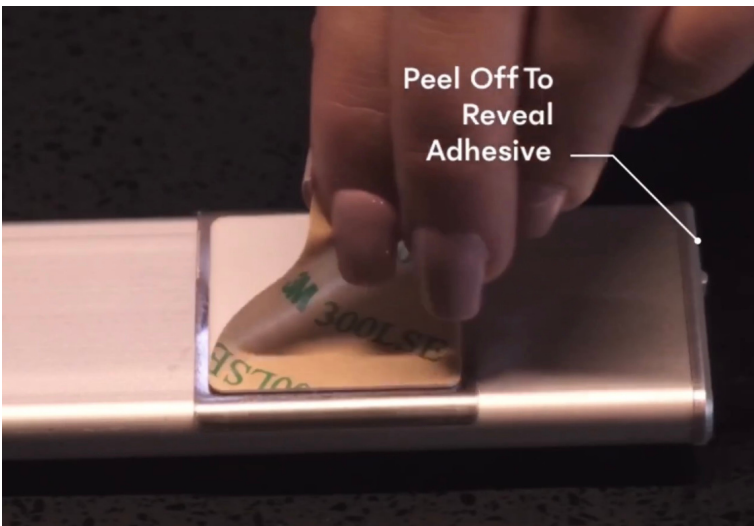
ILLUMINATESTRIPS®

You should find magnetic pieces inside the illuminate packaging, They have a metal side and an adhesive side. Find where the magnets are on the strip and attach the brackets (metal side down so they line up).



You then simply peel to reveal the adhesive.

**we use 3M adhesive, this should stick to any surface, but will struggle with wood & lime wall.*



Press & hold the light on the surface...remove the light and hold the adhesive brackets down for a minute or so to ensure they're stuck on properly. An extra step to prevent the light from falling is to allow the glue on the brackets to dry for 24 hours before attaching the light.

& whenever you need to remove the light or adjust the setting, you can easily detach it, thanks to the magnetic function!



EXTRA TIPS

Ensure surface is wiped clean.

Sometimes the light can fall off as the brackets aren't in line with the magnets so make sure they line up!

USB RECHARGING

Each illuminateStrip comes with its own USB Recharging wire.

You can detach the light anytime you need magnetically and recharge it by plugging this wire in to any outlet, whether that be an adapter, laptop or built in socket!



3 MODES

Motion Sensing | Always On | Off

AUTO

This is the Motion Sensing mode, if left on this mode, the strip will only come on when it senses motion nearby, and if there is not sufficient light in the area! It will stay on for 15 seconds or as long as it has its motion in the area and then automatically goes off for your convenience.

ALWAYS ON

There is a manual option to turn the light on and keep it on for as long as you need! But please note this does drain the battery faster, as it was designed to be on for short bursts of time.

OFF

BRIGHTNESS CONTROL

On our 2.0 strips we've now added the ability to adjust the brightness with just a wave of your hand! Simply hover your hand over the sensor whilst on auto mode and let illuminate do its magic

Wave

to brighten or dim your lights!

we heard you and implemented a new sensor that will adjust the brightness level when you hold your hand over it.

our lights just keep getting smarter!

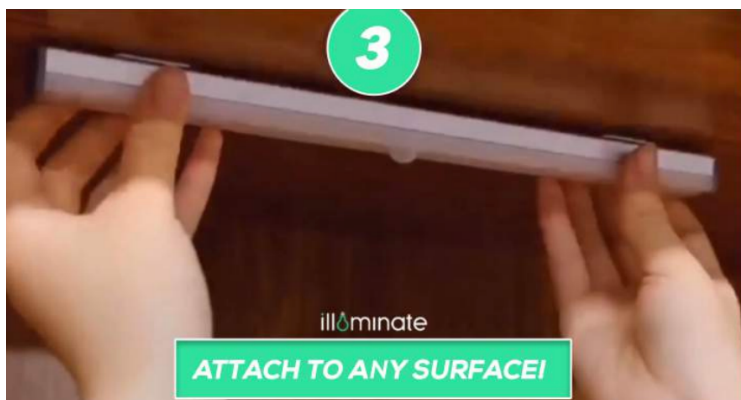
Updated

we updated our charging ports to support USB Type C. In simple terms, it means quicker charging and longer battery life!



illuminate

ILLUMINATE®



Our illuminate Lights follow the same installation process for the strips, they also recharge via the USB Wire. They take 2 hours for a full charge, which is indicated when the light turns green. When on Motion sensing mode, they will turn on automatically when you're within 120 degrees or 2 meters of the light. They have a daylight sensor built in so they will not come on during the day or where there is sufficient light to preserve battery! They work best in dark environments.

3 MODES

Motion Sensing | Always On | Off

MOTION SENSING

Triggered by 2 clicks on the side button, you'll know as the light will flash 2 times.

ALWAYS ON

1 click on the side button. There is a manual option to turn the light on and keep it on for as long as you need! But please note this does drain the battery faster, as it was designed to be on for short bursts of time.

OFF



ILLUMINATESOLAR®

Solar Powered | Motion Sensored | Weatherproof | Easy Install

Our newest in the range of lights we offer are perfect for winter & rainy days. We heard what you all had to say & compiled something that we think will work great in any home!



There are 2 easy Installation methods, scroll down to see what works for you!

What You Need:

(Included)



illuminateOutdoor



Drywall Anchors & Screws



Glue (optional)



Adhesive Hooks (Optional)

METHOD 1

No Drill or Screws

RECOMMENDED FOR: FLAT SURFACE INCLUDING CONCRETE WALL, TIMBER WALL, METAL WALL.

1

Adhesive Metal Hooks: Remove the sticker on the back to reveal the adhesive, and attach to the wall.



2

Press Firmly on to the wall for one minute (you may want to use Glue also for extra hold). & Leave for at least 12-24 hours to ensure they will hold without any problems

3

After 12-24 hours, place the illuminate light on the hooks through the holes!



METHOD 2

Drill & Screws

RECOMMENDED FOR: UNEVEN SURFACE INCLUDING BRICK WALL, STONE WALL.

1

Drill 2 Holes on the surface



2

Insert the drywall anchors into the holes, and fix the light by the screws and the sticky pad.

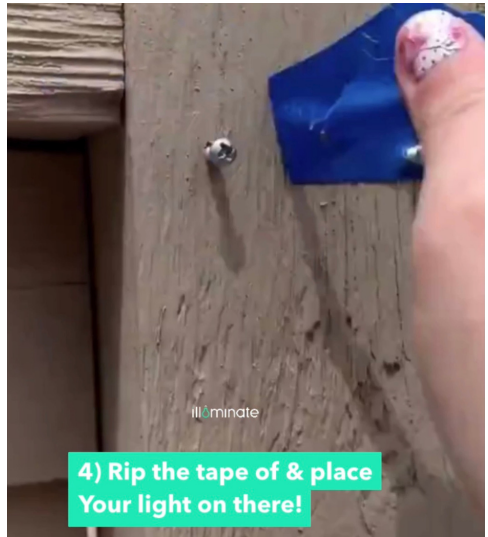
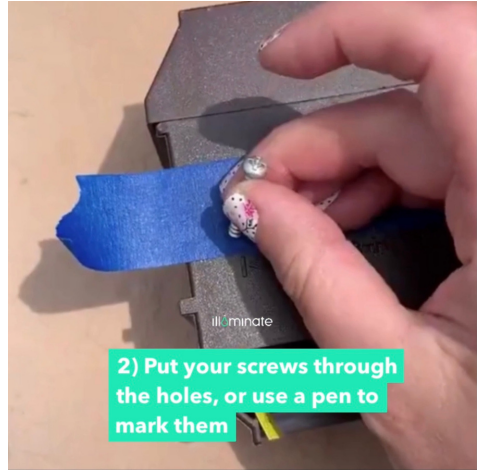


3

Turn on the light and switch to your desired mode. It begins to charge in the sun!

METHOD 2 (EASIER)

Drill & Screws



Work Smarter
NOT HARDER!

IDEA CREDIT:
@THECOPPERELM

RECHARGING & FUNCTIONS

SOLAR POWERED

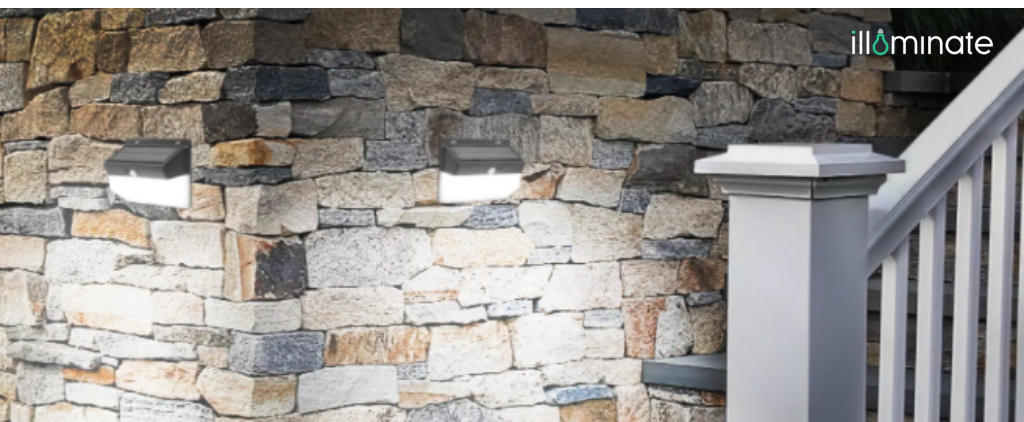
Our outdoor lights recharge with the sun! Solar powered technology, no need for batteries, recharging or any hassle. Just let mother nature do the work.

MOTION SENSORED

Following the theme of the rest of our products... you guessed it. They're motion sensed! Just hit the button on the side to trigger this mode, and it will only come on when it senses motion nearby. A great security measure.

ON THROUGHOUT THE NIGHT

Alternatively you can decide to turn them on and keep them on for the duration of the night (dusk till dawn!) For added visibility. Battery life on a solar charge is roughly 10-12 hours so don't worry, you've got enough juice to last the dusk, then let sunrise recharge them automatically for you.



ILLUMINATEHALO®



Motion Sensored, Circular design, perfect for stairwells, cupboards and more! With the same installation and charging methods as the rest of the illuminate range ✨

WALL LIGHTS



The Hex®

The perfect geometric lighting addition for an abstract, yet modern touch to your home!

01

The Pinnacle®

Wait, there's a Motion Sensed & Wireless option too? I'm In.

02



The Brass Double®

washing the walls with a decorative two-way pattern of light for a cozy, welcoming effect.

03



WALL LIGHTS

The Apex



Motion Sensored, 2 Beautiful Finishes, No Wires.

PRODUCT SPECS

illuminate® | illuminateStrips® | IlluminateSolar®



ILLUMINATE®

High-Quality Aviation Aluminum
USB Rechargeable
10LEDs
15mm Depth
Life Span: 50,000 Hours
20 Centimetres or 30 Centimetres
336LM / 430LM
(0.7 Inches Width)

Temperature

Cool White - 6000k
Warm - 3000k

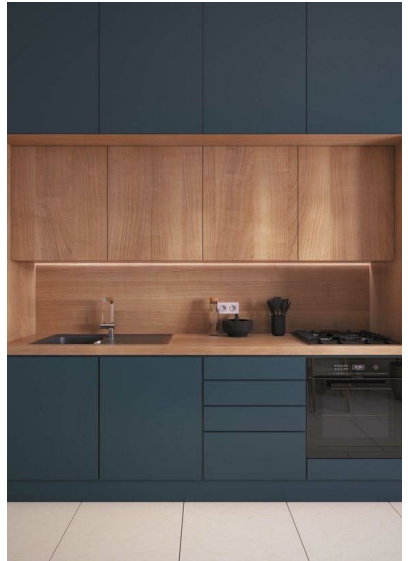
ILLUMINATESTRIPS®

High-Quality Aviation Aluminum
USB Rechargeable
120° Detecting Angle
14mm Thickness
45mm Width
8mm Depth
Life Span: 80,000+ Hours

Temperature

Cool White - 6000k
Warm - 3500k

23cm - 2300 MA/Power - 1.4W/Lumen - 80lm
40cm - 3000 MA/Power - 3.2W/Lumen - 150lm
60cm - 4500 MA/Power - 4.5W/Lumen - 220lm



ILLUMINATESOLAR®

Solar Powered

Dimension: 10.5 x 10 x 6 cm / 4 x 4 x 2 in

LED'S: 136

Lumens: 600 LM

Wattage: 4 W

Battery Capacity: 1500 mAh

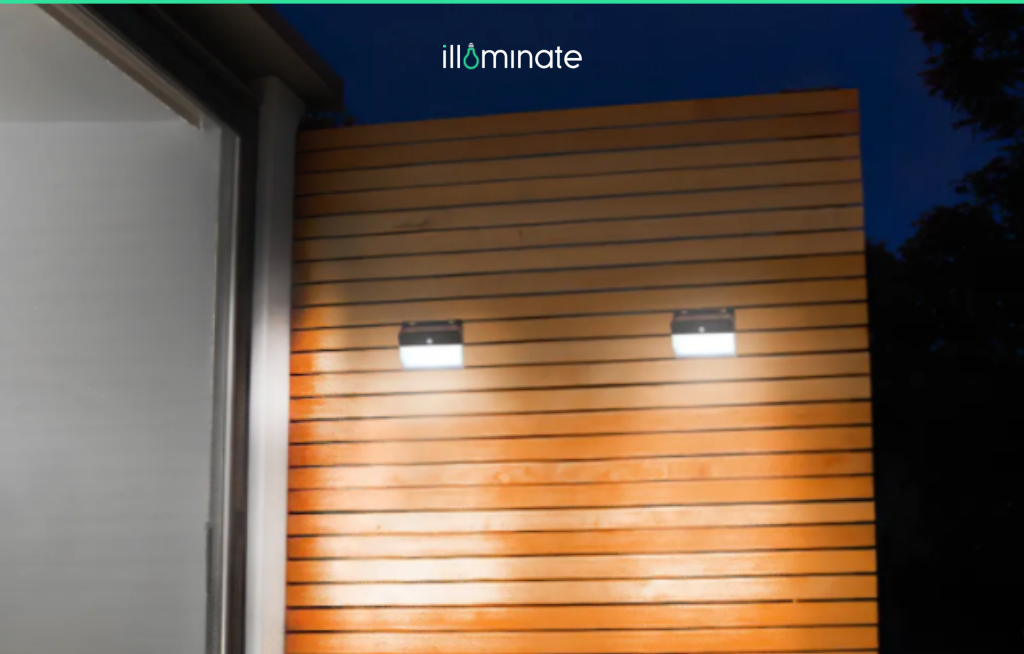
Battery Life: 10-12 Hours after a solar charge

Motion Detecting Range: 120°, 3m / 10ft

Waterproof Rating: IP65

Working Temperature: -5 ~ 60°C / 23 ~ 140°F

Material: ABS material

The logo for 'illuminate' features the word in a lowercase, sans-serif font. The letter 'i' is replaced by a stylized lightbulb icon with a green glow around it.

BULK BUYING, WHOLESALING & DISTRIBUTION

DISTRIBUTION

At this time we currently don't have any distributors. If you are interested in operating in a specific capacity please reach out to us with your terms.

BULK BUYING

we do offer bulk purchases over a certain number of units at a discounted value, if this is the case (usually for large scale renovations or mass use) email us with the quantity needed, use, and which variant in specific you are interested in. And we can have discuss terms further (tailor made)

WHOLESALING

Yes. Our products are popular amongst lighting and home decor retailers, we have discussed prior engagements in the past. If you're interested in buying wholesale and reselling at RRP do get in touch, MOQ are in place but can be negotiated. As long as branding is kept uniform we do offer this option.

BUSINESS CONTACT

INFO@TRYILLUMINATE.CO

HAVE YOU CHECKED US OUT ONLINE?

THE REVIEWS SPEAK FOR ITSELF!



Stuart

✎ 2 reviews 📍 GB



Jul 2, 2021

If Mercedes Benz made LED lights, they'd look like this!.

Bought 3 of these, 2 longer strips and a smaller squarer light more suited to illuminating a dark cupboard.

I bought these as I needed to supplement the lighting in my caravan, and to be honest, I wasn't expecting great things from them!.

But when they arrived, I was pleasantly surprised!.

They ooze quality, feel reassuringly weighty in the hand, produce a very bright, but pleasing light to the eye!.

I was amazed at their luminosity, all from a battery powered light.

The auto-on feature is great, as you don't even need to switch it on or off, and it doesn't come on in daylight either.

I wondered why they seemed a bit pricey, now I know why, I suppose you only get what you pay for!.

You won't be disappointed!.



FAQ

Why Use Illuminate?

"The light it gives off is 'ambient white' - similar to actual bulbs - which I prefer as "bright white" tends to hurt my eyes. It's easily bright enough to light up cupboards though and does the job well."

"I bought this for my mother, she lives alone, and I'm always worried about her safety, I installed 6 of these around the home, including the stairwell. We prefer it to an actual light due to convenience and safety, the automatic sensor is a lifesaver. Well worth the price, what does peace of mind cost?"

How do they turn on/Install?

Illuminate is a motion sensor ball in the middle of the LED Strip, it senses motion within 2 Meters, and it automatically turns off after 15 seconds if no motion is detected!

Our smart mounting design allows hassle-free Installation, packed with 2 small magnetic pieces, which you just Peel to reveal the adhesive and Stick on to any surface, then simply attach the Light magnetically.

Plus, you could save up to 30% household energy by using illuminate, think of all the money you'd save without having to turn on a light on every room you enter, especially in the middle of the night! Unique Solution & a Sleek design

Can they be used anywhere?

Illuminate can be put everywhere in the home. At this time it is not waterproof so they should not be used in environments exposed to moisture/water. If you want a weatherproof version check out our outdoor range!

What are the modes & how does it charge?

Motion Sensing - This means its set to turn on within the sensing range

Always On - A manual override to keep the light on for as long as you need

They charge via USB cable provided with illuminate, which can plug in to any device or adapter!

My Light won't turn on/Is faulty, what should I do?

illuminate is motion sensed, and is auto off during the day to preserve energy, this means it won't come on during the day unless it's put in a dark space, if you're having trouble turning it on, hit the button on the side to switch it from Always On or Motion Sensing. It has a 120 degree sensing range so once put in place, it will be able to detect you when walking toward it or opening a closet etc. Please make sure you're in a dark environment when testing it, and that it is fully charged with the USB Cable. If problems continue to occur then please send us a **video or photo** via email or social media and our team would be happy to help!

If on the rare occasion, your item arrives damaged please send us a photo so we can forward this to our team.

Do you offer returns/refunds or exchanges?

We quality check and inspect all items before sending them out, so there's no need to worry about damaged goods. However, if your item is damaged or stops working within the timeframe due to a technical fault (not at the fault of the user) we do offer refunds or replacements.

Uh oh, there's an error in my order, can I change it?

Once an order is placed, our warehouse staffs can pack and ship out your order within 24 hours, so it's not always possible to process address change requests. If you notice an error, please email us ASAP with your name and order number so we can try to make a correction(s). There's no guarantee we can make it, especially once it leaves our warehouse, but we'll do everything we can!

Questions?

CONTACT US!

Our customer service team is here to help. whether that be with product queries, installation issues, or defective goods. We will work day & night to see to it your issues resolved!

Social Channels: @tryilluminate

Support E-Mail: support@tryilluminate.co

THANK YOU!

- The illuminateCo Team

BE SURE TO

FOLLOW US!

FOR THE LATEST DROPS, INSPIRATION,
DISCOUNTS & MORE!

#tryilluminate



@TRYILLUMINATE