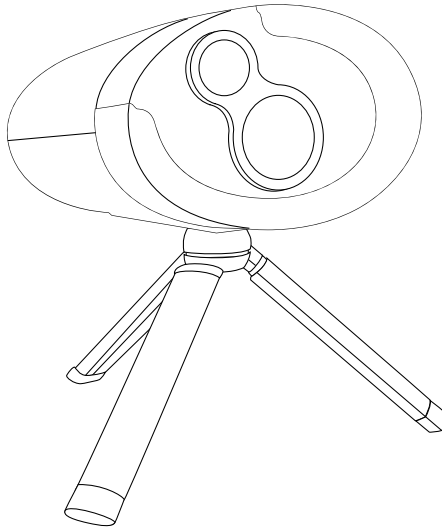




BLISSLIGHTS®

PIXXI™ Laser Projector



User's Guide

Model no. PX-1

**LASER RADIATION**
AVOID DIRECT EYE EXPOSURE
CLASS 3R LASER PRODUCT
Diode Laser - Max. Output < 5mW
Wavelengths 400-700 nm
Classified per IEC 60825-1 Ed. 3.0:2014

Please **ONLY** use
manufacturer-provided
power supply

TABLE OF CONTENTS

| | |
|--------------------------------------|---|
| Notice | 1 |
| Introduction | 2 |
| Before You Begin..... | 2 |
| Parts List..... | 2 |
| Setting up the Laser Projector | 3 |
| List of Included Projections | 3 |
| Installation Tips | 4 |
| Default Settings | 4 |
| Product Specifications..... | 4 |
| Limited Warranty | 4 |
| Troubleshooting | 5 |
| Caution..... | 5 |
| Cleaning Instructions..... | 5 |
| Disposal..... | 5 |

NOTICE

CAUTION—Use of controls or adjustments or performance of procedures other than those specified herein may result in hazardous radiation exposure.

This laser product is certified as a Class 3R laser product and complies with FDA performance standards for Laser Product Performance Standard (FLPPS) contained in the regulations in 21 CFR Subchapter J.

Avoid direct eye contact of CLASS 3R laser energy as it can be hazardous. For reference, the FLPPS requirements for demonstration laser products, like laser pointers, are limited to CLASS 3R levels of laser energy. This product uses diffractive optics to scatter the beam energy. This scattering effect causes the energy concentration to drop below the exposure limits for momentary or accidental viewing at a relatively short distance from the laser aperture. As with all bright light-sources, when you operate this device in unsupervised general public areas, it is recommended that up-close access to the light be restricted or prevented.

This laser display device incorporates a CLASS 3B laser system which, by itself, may be hazardous. However, this laser display device incorporates a protective housing in the machine design so that there is no exposure or human access to laser radiation during operation above the CLASS 3R limits. Each individual laser beamlet's power is under 5 mW.

UNDER NO CIRCUMSTANCES shall attempts be made to open the protective housing or operate the device if the aperture window is damaged.

All service to this laser display device requiring the protective housing to be opened and/or removed shall be performed by service personnel or their authorized agents. Opening the protective housing voids the warranty.

NO LASERS SHOULD BE POINTED INTO THE SKY WITHIN 10 NAUTICAL MILES (18.5 km) OF AN AIRPORT. IF YOU ARE LOCATED WITHIN THIS SPECIFIC PERIMETER, WE RECOMMEND THE LASERS BE POINTED DOWN AT THE GROUND SO NO STRAY BEAMS ARE PROJECTED INTO THE AIR. CHECK WITH YOUR LOCAL AIRPORT OR PROVINCIAL GUIDELINES FOR FURTHER INFORMATION.

INTRODUCTION

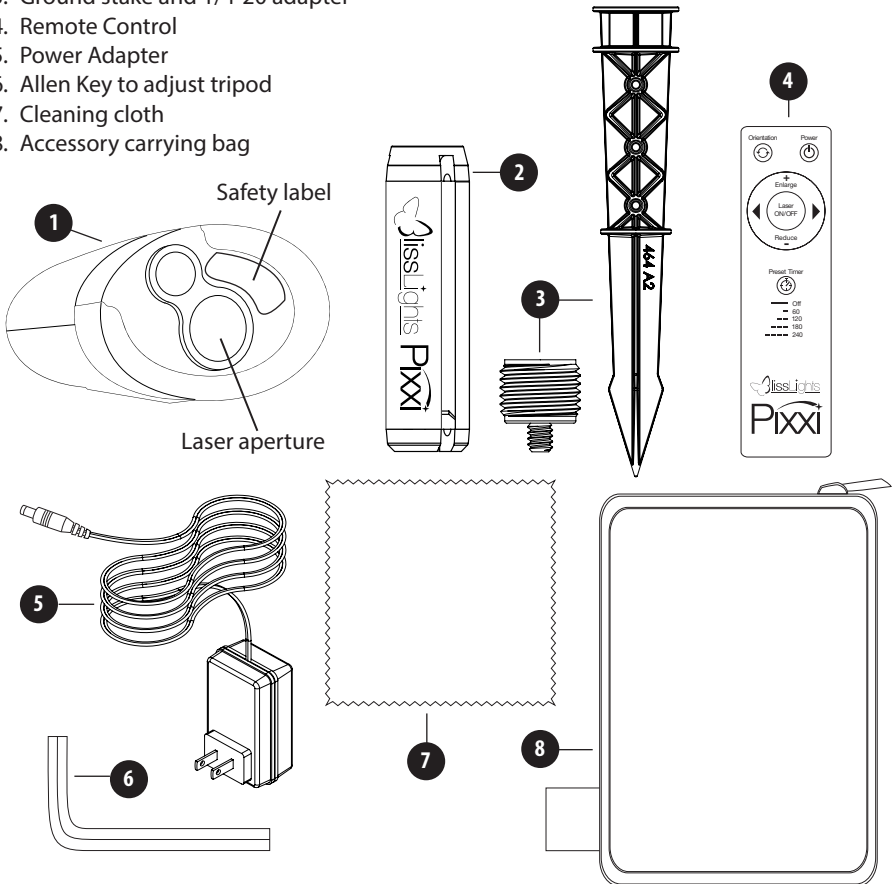
Thank you for purchasing the BlissLights PIXXI Laser Projector. This product is a unique indoor/outdoor light fixture that uses patented laser technology to project your favorite images for year-round applications. We hope you enjoy this incredibly unique lighting experience.

BEFORE YOU BEGIN

Immediately upon receiving the fixture, carefully unpack and check the carton contents to ensure that all parts are present and in good condition. Notify the retailer immediately and retain packing material for inspection if any parts appear damaged from shipping or the carton itself shows signs of mishandling. Save the carton and all packing materials. In the event that the fixture must be returned, it is important that the fixture be returned in the original factory box. Please see parts list below for box contents.

PARTS LIST:

- 1. PIXXI Laser Projector
- 2. Tripod
- 3. Ground stake and 1/4-20 adapter
- 4. Remote Control
- 5. Power Adapter
- 6. Allen Key to adjust tripod
- 7. Cleaning cloth
- 8. Accessory carrying bag



SETTING UP THE LASER PROJECTOR

1. Connect the power supply into an available standard electrical outlet.
2. Place the PIXXI on a flat solid surface and aim toward desired ceiling/wall/tree.
3. Aim the remote control at the front window and press the POWER button.
4. To change the illumination angle on projection surfaces, adjust any leg of the tripod. If tripod is loose, use the supplied Allen Wrench to tighten the screw on the underside of the tripod screw-in knuckle.
5. Use the following buttons to control lighting effects:
 - a. Power – Use this button to turn the power on and off.
 - b. Orientation – use this button to rotate the image 90 degrees.
 - c. Enlarge – use this button to make the image bigger.
 - d. Reduce – Use this button to make the image smaller.
 - e. Right Arrow – use this button to select the next image projection.
 - f. Left Arrow – use this button to select the pervious image projection.
6. By default, the Pixxi will run continuously. The Preset Timer button sets a timer, which will turn Pixxi off after a designated time. Press the button once to set the play time for an hour. Double, triple, or quadruple press for 2, 3, or 4 hours respectively. Press and hold the button for continuous play.

LIST OF INCLUDED PROJECTIONS

Pixxi Dust

01. Bounce 1
02. Duet
03. Triplet
04. Bounce 2
05. Swirl 1
06. Sparkle 1
07. Sparkle 2
08. Sparkle 3
09. Swirl 2
10. Hovering fireflies
11. Pixxi show
(~2 min)

Abstract

12. Abstract 1
13. Abstract 2
14. Abstract 3
15. Abstract show
(~2 min)

16. Rain
17. Love
18. Heart
19. Wedding

Valentine's Day

20. Flying hearts

21. Wedding bells

Occasions

22. Anniversary
23. Congratulations
24. Confetti
25. Graduation

Spring Holidays

26. Clovers
27. Pot of Gold
28. Bunny
29. Rabbit
30. Mother's Day

31. Father's Day

32. 4th of July

Birthday

33. Happy Birthday
34. Birthday show
(~2 min)
35. Birthday dino
36. Unicorn
37. Birthday car
38. Dump truck
39. Dance show

Halloween

40. Jack O'Lantern
41. Bats
42. Monster
43. Scary Eyes
44. Halloween show
(~4 min)

45. Falling leaves

46. Fire

Thanksgiving

47. Thanksgiving
48. Turkey

Hanukkah

49. Menorah
50. Happy Hanukkah
51. Star of David

Christmas

52. Happy Holidays
53. Merry Christmas
54. Santa
55. Stocking
56. Snowman
57. Reindeer

58. Snowglobe

59. Santa sleigh

60. Penguin skater

61. Running deer

62. Christmas show
(~4 min)

New Year

63. Happy New Year

64. Firework

65. Champaigne

66. New Year show
(~2 min)

Misc

67. Basketball

68. Football

69. Soccer

70. Hockey

71. Golf

72. Surfing
73. Undersea show
(~2 min)

INSTALLATION TIPS

- **Do not connect the light to a dimmer pack, as a dimmer accessory may damage the laser component.**
- Use only the manufacturer-provided CUL power supply.
- **Limit the use of extension cords.** If you need an extension cord, use only UL, CUL, or CSA approved 3rd party extension cords.
- The darker the display area, the brighter your projection will appear. Try to avoid display areas with strong ambient light sources, such as commercial street lights or bright security flood lights.

DEFAULT SETTINGS

Once the laser projector is plugged in, it will enter the default mode where all effects are on. Use the buttons to change the effect settings and brightness. This light runs continuously by default, but has a built-in timer that can set the light to shut off after an increment of 1 hour, 2 hours, 3 hours, or 4 hours.

PRODUCT SPECIFICATIONS

| | |
|-----------------------|-----------------------------|
| Laser Classification | Class 3R |
| Laser Wavelength | 507 nm—Green |
| Housing | Metal and ABS plastic |
| Power Consumption | Less than 30 W |
| Power Input | 120 V AC |
| Power Output | < 5 mW per beamlet |
| Operation | Indoor/Outdoor |
| Operating Temperature | 32°F to 104°F (0°C to 40°C) |
| Maintenance | Maintenance Free |
| Dimensions | 6.5”L x 2.5”W x 6.5”H |
| Cord Length | 3 ft (1 m) |
| Warranty | Limited One Year |

1-YEAR LIMITED WARRANTY

This product carries a one (1) year warranty against defects in workmanship and materials. BlissLights, LLC agrees to replace the defective product free of charge within the stated warranty period, when returned by the original purchaser with proof of purchase. This product is not guaranteed against wear or breakage due to misuse and/or abuse. For more detailed warranty information, please visit www.blisslights.com/warranty

TROUBLESHOOTING

We are always happy to help! To talk to a helpful team member, send an email to support@blisslights.com or call our support line at 888-868-4603.

CAUTION

This is not a toy. Young children must be supervised while using this device at all times.

CLEANING INSTRUCTIONS

Surface clean only with a soft, dry cloth. Unplug unit before cleaning.

DISPOSAL

At the end of its serviceable life, this product should not be treated as household or general waste. It should be handed over to the applicable collection point for the recycling of electrical and electronic equipment.



Designed in the USA
By BlissLights LLC
Made in USA





BLISSLIGHTS®
www.blisslights.com