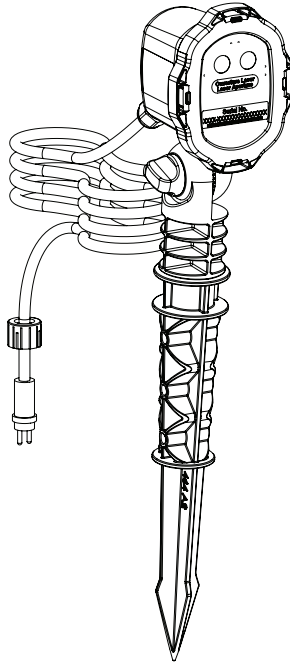




MINI



User's Guide

Manufactured by: BlissLights
Phone: (888) 868-4603

www.blisslights.com
support@blisslights.com
MADE IN CHINA



Please ONLY use
manufacturer provided
power supply

TABLE OF CONTENTS

Notice	1
Introduction	2
Before You Begin.....	2
Parts List.....	2
Setting up the BlissLights Mini	3
Operating the BlissLights Mini	3
Operating the Timer	3
Operating the Remote Control.....	3
Remote Control Functions	4
Precautionary Tips for the Remote Control.....	5
Precautionary Tips for Battery Installation	5
Battery Disposal	5
Installation Tips	5
Product Specifications.....	6
Troubleshooting	7
Limited Warranty	8
Owner Registration Card	8

NOTICE

CAUTION—Use of controls or adjustments or performance of procedures other than those specified herein may result in hazardous radiation exposure.

This laser product is certified as a CLASS 3R laser product, and adheres to the requirements of the US Federal Laser Product Performance Standard (FLPPS) contained in the regulations in 21 CFR Subchapter J.

Avoid direct viewing of a CLASS 3R laser energy as it can be hazardous. For reference, the FLPPS requirements for demonstration laser products, like laser pointers, are limited to CLASS 3R levels of laser energy. This product uses diffractive optics to scatter the beam energy. This scattering effect causes the energy concentration to drop below the exposure limits for momentary or accidental viewing at a relatively short distance from the laser aperture. As with all bright light-sources, when you operate this device in unsupervised general public areas, it is recommended that up-close access to the BlissLights be restricted or prevented.

This laser display device incorporates a CLASS 3B laser system which, by itself, may be hazardous. However, this laser display device incorporates a protective housing and diffractive holographic optics in the machine design such that there is no exposure or human access to laser radiation during operation or maintenance above the CLASS 2M limits. Each individual laser beamlet's power is under 1mw, which is less than a standard laser pointer.

UNDER NO CIRCUMSTANCES shall attempts be made to open the protective housing or operate the device if the aperture window is damaged.

All service to this laser display device requiring the protective housing to be opened and/or removed shall be performed by BlissLights service personnel or their authorized agents. Opening the BlissLights protective housing voids the warranty.

NO LASERS SHOULD BE POINTED INTO THE SKY WITHIN 10 NAUTICAL MILES (18.5 KM) OF AN AIRPORT. IF YOU ARE LOCATED WITHIN THIS SPECIFIC PERIMETER, WE RECOMMEND THE LASERS BE POINTED DOWN AT THE GROUND SO NO STRAY BEAMS ARE PROJECTED INTO THE AIR. CHECK WITH YOUR LOCAL AIRPORT OR COUNTY GUIDELINES FOR FURTHER INFORMATION.

INTRODUCTION

Thank you for purchasing the BlissLights Mini. The BlissLights Mini is a unique indoor/outdoor light fixture that uses new laser and holographic technology to project thousands of pin-points of light. See the “fireflies” dance in your garden, create a fun and mesmerizing ambience indoors, or add some extra allure to your holiday display. We hope you enjoy this incredibly unique lighting experience.

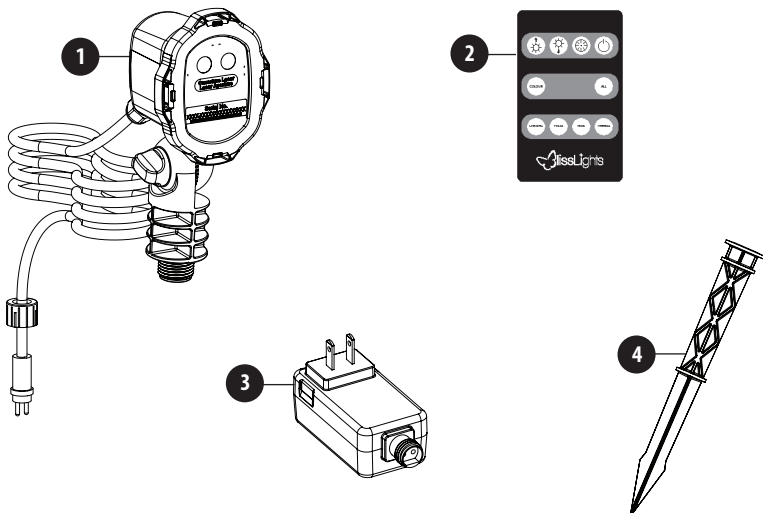
Each unit provides up to 50 x 50' (15.2 x 15.2 m) of coverage. It has maximum electrical usage of 4 W, which is more energy efficient than many LED landscape lights. The light is placed in a plastic housing making it weather resistant. This is the perfect year-round light.

BEFORE YOU BEGIN

Immediately upon receiving the fixture, carefully unpack and check the carton contents to ensure that all parts are present and in good condition. Notify the shipper immediately and retain packing material for inspection if any parts appear damaged from shipping or the carton itself shows signs of mishandling. Save the carton and all packing materials. In the event that the fixture must be returned to the factory, it is important that the fixture be returned in the original factory box. Please see parts list below for box contents.

PARTS LIST:

- 1) 1 x BlissLights Mini Laser Fixture
- 2) 1 x Remote Control (CR2025 Battery Included)
- 3) 1 x UL/CUL Power Supply
- 4) 1 x Ground Stake



SETTING UP THE BLISSLIGHTS DUO MINI

Before operating your laser projector, please read the “Before you Begin” section and “Notice” section of this user guide.

1. Connect the light fixture to the provided UL/CUL power supply.
2. Connect the power supply into an available standard electrical outlet.
3. Attach the stake to the fixture head by twisting the fixture clockwise. Remove the stake by twisting the fixture counter-clockwise.
4. Stake the light into the desired location by holding the top of the stake and gently pushing the stake into the ground. Do not push the fixture into the ground by pushing down on the lamp head.
5. Adjust the angle of the projected light by turning the thumbscrew attached to the side of the fixture.
6. Use the included remote control to change the settings of the light output (pg 4).
7. To turn off the light, use the provided remote or remove the power plug from the electrical outlet.

OPERATING THE BLISSLIGHTS DUO MINI

Once the laser projector is plugged in, it will enter the default mode with the laser on and the automatic timer in 6 hour on and 18 hour off mode. Use the included remote control to change these settings.

OPERATING THE TIMER

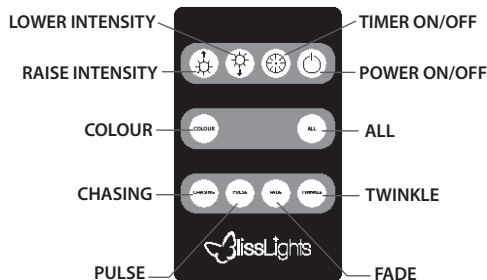
This light has a built-in timer that is designed to automatically shut off after 6 hours of operation. It will go into sleep mode for 18 hours and resume its operation thereafter. The timer will turn on once the light is plugged in. To disable the timer, press the timer button on the remote. The laser will blink twice to signal that the timer is off and that the laser will remain on. To turn the timer back on at the desired time, press the timer button again. The laser will then blink three times to signal that the timer is on.

OPERATING THE REMOTE CONTROL

Use the included infrared remote control to operate the light's features. Infrared signal does not go through solid objects, such as windows, walls, trees, shrubs, etc. Make sure there is a clear line of sight between you and the fixture. Point the remote control at the FACE of the light fixture, where the receiver is located. The remote operates up to 15' (4.6 m) of unobstructed distance away from the face of the fixture.

REMOTE CONTROL FUNCTIONS

- **Power:** Press to put the device in standby mode. Before entering standby mode, the device will save all current settings so that when the Power button is pressed again, the device will resume with the last mode before entering standby. This is the same behavior as unplugging the device. Whenever the device is unplugged or put into standby mode, all current settings are saved and will resume when the device is restarted.
- **Timer:** Press to turn the internal 6/18 timer on or off.
- **Intensity +/-:** Press the increase and decrease intensity buttons to change the intensity of the laser. There are five preset settings for intensity ranging from dimmest to brightest. The increase and decrease buttons only affect the intensity of the lasers while in the Colour or All mode. The laser will blink once it has reached the highest or lowest intensity setting.
- **Colour:** Press the colour button to cycle through all combinations of the available laser colors.
- **All:** Press to turn on all available colours simultaneously (green and blue).
- **Chasing:** This mode makes each available laser colour blink in sequence. Each push of the button cycles the effect through one of three different speeds: fast, medium and slow.
- **Pulse:** This mode pulses in and out in a smooth transition through all available colour options. Each push of the button cycles the effect through one of three different speeds: fast, medium and slow.
- **Fade:** This mode cycles through each available colour option in a fading transition. Each push of the button cycles the effect through one of three different speeds: fast, medium and slow.
- **Twinkle:** This mode creates a twinkle effect. Each push of the button cycles the effect through one of three different speeds: fast, medium and slow.



Remote FCC Compliance:

This device complies with Part 15 of FCC Rules. Operation is subject to the following two conditions: 1. this device may not cause harmful interference, and 2. this device must accept any interference received, including interference that may cause undesired operation.

PRECAUTIONARY TIPS FOR THE REMOTE CONTROL

- The remote control should be kept dry and away from heat sources. Avoid humidity. If the device responds erratically to the remote control, or doesn't respond at all, check the battery.
- Do not subject the remote control to undue physical stress, such as striking or dropping it.
- Do not attempt to clean the remote control with a volatile solvent. Wipe it with a clean, damp, soft cloth when cleaning.

PRECAUTIONARY TIPS FOR BATTERY INSTALLATION

- Do not ingest the battery.
- Non-rechargeable battery is not to be recharged.
- Battery is to be inserted with the correct polarity.
- Exhausted battery is to be removed from the product.
- Only use CR2025 3 V lithium cell replacement battery.
- Do not take apart the battery, do not heat the battery, and do not throw it into a fire.
- Keep the battery away from children and pets.
- When not using the remote control for an extended period of time, remove the battery and store in a cool, dry place at room temperature.

BATTERY DISPOSAL

Please, always dispose of batteries at a suitable recycling point.

Note: Batteries should be recycled or disposed of as per provincial and local guidelines.

INSTALLATION TIPS

- **Do not connect the light to a dimmer pack, as a dimmer accessory may damage the laser component.**
- Use only the manufacturer-provided UL/CUL power supply.
- **Limit the use of extension cords.** If you need an extension cord, use only UL, CUL, or CSA approved 3rd party extension cords. When using outdoors, **ONLY** use extension cords that are weather resistant, such as waterproof cords.
- The darker the display area, the brighter your projection will appear. Try to avoid display areas with strong ambient light sources, such as commercial street lights or bright security flood lights.
- If you choose to mount the BlissLights Spright for downlighting (e.g. from balcony railing, fence line, roof line, etc.), it is recommended that, for safety purposes, your lights are properly mounted using a suitable hanging clamp and safety cable.

PRODUCT SPECIFICATIONS

Dimensions	75 x 100 x 160 mm 2.9 x 3.9 x 6.3" Cord length: 6 m / 20'
Housing	ABS
Laser Classification	Class 3R
Laser Wavelength	Red—660 nm, Green—515 nm
Maintenance	Maintenance free
Power Consumption	4 W, continuous operation 24/7
Power Supply Input	110 V AC (with provided UL/CUL transformer)
Light Input	12 VDC
Operating Temperature	-22°F to 85°F (-30°C to 29°C)
Operation	Indoor/outdoor
Projection Coverage	Up to 30 x 30' (9.1 x 9.1 m)
Remote Control Functions	Power, timer, intensity, color, all, chasing, pulse, fade, and twinkle
Timer	6/18 timer (on for 6 hours/off for 18 hours)
Warranty	One-year warranty

TROUBLESHOOTING

How to avoid IR interference:

If the movement of the lasers start and stop randomly, there is a wireless signal interference (i.e. radio control toys, remote controls for TV or entertainment systems, automatic vacuums, etc.). To verify if this is the case, please try covering the window at the bottom of the front lens with your finger to block stray infrared signals from entering the fixture. If this corrects the problem, please check the other electronic products running in the room to determine where the stray signals are coming from.





LIMITED WARRANTY

The manufacturer warrants this product to be free from defects in materials and workmanship for a period of one (1) year from date of purchase. This warranty applies only to the original consumer purchaser and only to products used in normal use and service. If this product is found to be defective, the manufacturer's only obligation, and your exclusive remedy, is the repair or replacement of the product at the manufacturer's discretion, provided that the product has not been damaged through misuse, abuse, accident, modifications, alterations, neglect or mishandling. This warranty shall not apply to any product that is found to have been improperly installed, set-up, or used in any way not in accordance with the instructions supplied with the product. This warranty shall not apply to a failure of the product as a result of an accident, misuse, abuse, negligence, alteration, or faulty installation, or any other failure not relating to faulty material or workmanship. This warranty shall not apply to the finish on any portion of the product, such as surface and/or weathering, as this is considered normal wear and tear. The manufacturer does not warrant and specially disclaims any warranty, whether expressed or implied, of fitness for a particular purpose, other than the warranty contained herein. The manufacturer specifically disclaims any liability and shall not be liable for any consequential or incidental loss of damage, including any labor/expense costs involved in the replacement or repair of said product. This warranty gives you specific legal rights and you may also have other rights which vary from state to state. Please contact BlissLights at support@blisslights.com, or (888) 868- 4603.

Owner Registration Card

Please fill out, cut along dashed line, affix proper postage and return this Owner Registration Card to insure that your new BlissLights is covered by the limited warranty. You can also register your product online by going to www.blisslights.com. Registering your product will help expedite your warranty related requests, but is not required.

Mailing Address: BlissLights, 100 E. San Marcos, Blvd. Suite #308, San Marcos CA 92609

Purchaser's Name: _____

Address: _____

City / State / Province: _____ Zip: _____

Email: _____

BlissLights Product: _____ Purchase Date: _____

Where Purchased (Store Name) _____

Where will the BlissLights be used: _____

If commercial institution, what type of business?

Restaurant Bar Store Office Other: _____

If home installation, where?

Walkway Patio Garden Area Porch Other: _____

Model/UPC Number: _____