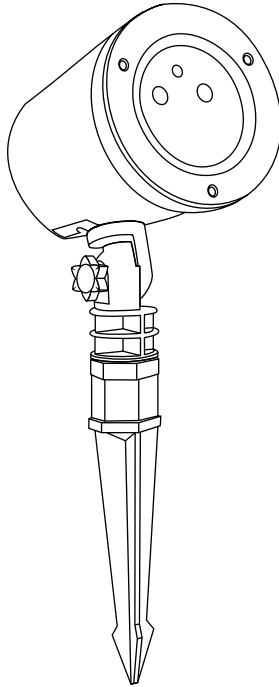


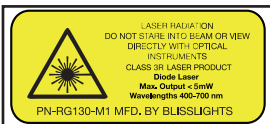


Firefly MOTION™



User's Guide

Manufactured by: BlissLights
Phone: 1-888-868-4603
Model #: PN-RG130-M1
www.blisslights.com
support@blisslights.com
MADE IN CHINA



Please ONLY use
manufacturer provided
power supply



TABLE OF CONTENTS

Notice	1
Introduction	2
Before You Begin.....	2
Parts List.....	2
Setting up the BlissLights Firefly Motion	3
Operating the BlissLights Firefly Motion.....	3
Operating the Timer	3
Caution.....	4
Cleaning Instructions.....	4
Disposal.....	4
Using the Remote Control.....	5
Increasing and Decreasing the Light Animation Speed	5
Precautionary Tips for Remote Control	5
Installation Tips	6
Product Specifications.....	6
Troubleshooting	7
Limited Warranty	8

NOTICE

CAUTION—Use of controls or adjustments or performance of procedures other than those specified herein may result in hazardous radiation exposure.

This device (Model PN-RG130-M1) complies with part 15 of the FCC Rules. Operation is subject to the following two conditions: (1) This device may not cause harmful interference, and (2) this device must accept any interference received, including interference that may cause undesired operation. Note: This equipment has been tested and found to comply with for a Class B digital device, pursuant to part 15 of the FCC Rules. These limits are designed to provide reasonable protection against harmful interference in a residential installation. This equipment generates, uses, and can radiate radio frequency energy and, if not installed and used in accordance with the instruction, may cause harmful interference to radio communications. However, there is no guarantee that interference will not occur in a particular installation. If the equipment does cause harmful interference to radio or television reception, which can be determined by turning the unit off and on, the user is encouraged to try to correct the interference by one or more of the following measures: Reorient or relocate the receiving antenna. Increase the separation between the equipment and the receiver. Connect the equipment to an outlet on a circuit different from that to which the receiver is connected. Consult the dealer or an experienced radio/TV technician for help.

This laser product is certified as a CLASS 3R laser product, and adheres to the requirements of the US Federal Laser Product Performance Standard (FLPPS) contained in the regulations in 21 CFR Subchapter J.

Avoid direct eye contact of CLASS 3R laser energy as it can be hazardous. For reference, the FLPPS requirements for demonstration laser products, like laser pointers, are limited to CLASS 3R levels of laser energy. This product uses diffractive optics to scatter the beam energy. This scattering effect causes the energy concentration to drop below the exposure limits for momentary or accidental viewing at a relatively short distance from the laser aperture. As with all bright light-sources, when you operate this device in unsupervised general public areas, it is recommended that up-close access to the light be restricted or prevented.

This laser display device incorporates a CLASS 3B laser system which, by itself, may be hazardous. However, this laser display device incorporates a protective housing and diffractive holographic optics in the machine design so that there is no exposure or human access to laser radiation during operation or maintenance above the CLASS 3R limits. Each individual laser beamlet's power is under 5 mW, which is less than a standard laser pointer.

UNDER NO CIRCUMSTANCES shall attempts be made to open the protective housing or operate the device if the aperture window is damaged.

Warning: Changes or modifications to this unit not expressly approved by the party responsible for compliance could void the user's authority to operate the equipment.

All service to this laser display device requiring the protective housing to be opened and/ or removed shall be performed by service personnel or their authorized agents. **Opening the protective housing voids the warranty.**

NO LASERS SHOULD BE POINTED INTO THE SKY WITHIN 10 NAUTICAL MILES(18.5 km) OF AN AIRPORT. IF YOU ARE LOCATED WITHIN THIS SPECIFIC PERIMETER, WE RECOMMEND THE LASERS BE POINTED DOWN AT THE GROUND SO NO STRAY BEAMS ARE PROJECTED INTO THE AIR. CHECK WITH YOUR LOCAL AIRPORT OR PROVINCIAL GUIDELINES FOR FURTHER INFORMATION.

INTRODUCTION

Thank you for purchasing the BlissLights Firefly Motion. The BlissLights Firefly Motion is a unique dual-color indoor/outdoor light fixture that uses laser and holographic technology to project thousands of moving pin-points of light. See the “fireflies” dance in your garden without the need for wind, create a fun and mesmerizing ambience indoors, or add some extra allure to your holiday display. We hope you enjoy this incredibly unique lighting experience.

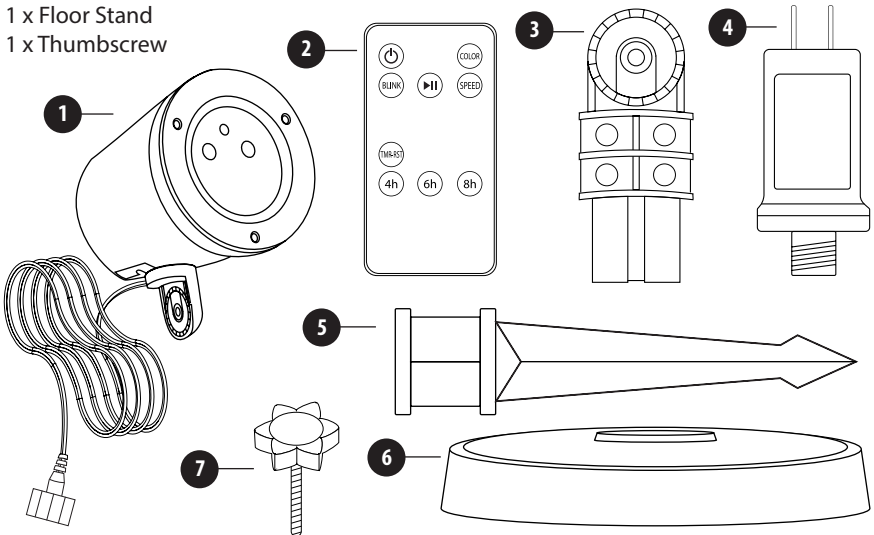
Each unit provides up to 2,500 square feet (50ft x 50ft) of coverage. It has maximum electrical usage of 2 to 9 W, which is more energy efficient than many LED landscape lights. The fixture housing is weather resistant ABS resin for year-round indoor or outdoor operation.

BEFORE YOU BEGIN

Immediately upon receiving the fixture, carefully unpack and check the carton contents to ensure that all parts are present and in good condition. Notify the shipper immediately and retain packing material for inspection if any parts appear damaged from shipping or the carton itself shows signs of mishandling. Save the carton and all packing materials. In the event that the fixture must be returned to the factory, it is important that the fixture be returned in the original factory box. Please see parts list below for box contents.

PARTS LIST:

- 1) 1 x BlissLights Firefly Motion Laser Fixture
- 2) 1 x Remote Control with 1pcs 3V lithium battery CR2025
- 3) 1 x Swivel
- 4) 1 x Power Supply
- 5) 1 x Ground Stake
- 6) 1 x Floor Stand
- 7) 1 x Thumbscrew



SETTING UP THE BLISSLIGHTS FIREFLY MOTION

Before operating your Firefly Motion, please read the “Before you Begin” and “Notice” sections of this user guide.

1. Connect the light fixture to the provided power supply.
2. Attach the swivel by inserting the thumbscrew through the swivel and into the hole in the fixture base. Turn screw clockwise until tight.
3. Attach the stake to the fixture head by inserting the fixture with gentle pressure.
4. Attach the light fixture to provided stake or base. Twist base clockwise until tight and set on flat surface; or stake the light into the desired location by holding the top of the stake and gently pushing the stake into the ground.
5. Adjust the angle of the projected light by turning the thumbscrew attached to the side of the fixture.
6. Connect the power supply into an available standard electrical outlet.
7. Use the included remote control to adjust the speed of the light movement.
8. To turn off the light, use the provided remote or remove the power plug from the electrical outlet.

OPERATING THE BLISSLIGHTS FIREFLY MOTION

The Blisslights Firefly Motion operates in temperatures of 19°F to 95°F. There may be a slight delay in projection intensity if operating in temperatures below 55°F. Please allow up to 10 minutes for the light to warm up and reach its full projection intensity.

OPERATING THE TIMER

When you first plug in your light, it will automatically turn on and will operate at its slowest rotation speed. It will continue on for 6 hours, or until it is shut off using the remote control. Using the remote control to shut off the unit also disables the timer, and every time it is turned on, it will reset the timer.

The Blisslights Firefly Motion has a built-in timer that is designed to automatically shut off after 6 hours of operation, though it can be set to stay on for 4, 6, or 8 hours. It will go into sleep mode for 18 hours on default mode (20 when set to 4 hours on, or 16 hours when set to 8-hours on) and resume its operation thereafter. The rotation speed will remain at the same setting for every timer cycle, unless you unplug the unit, which will return it to the slowest rotation speed.

CAUTION

This is not a toy. Young children must be supervised while using this device at all times.

CLEANING INSTRUCTIONS

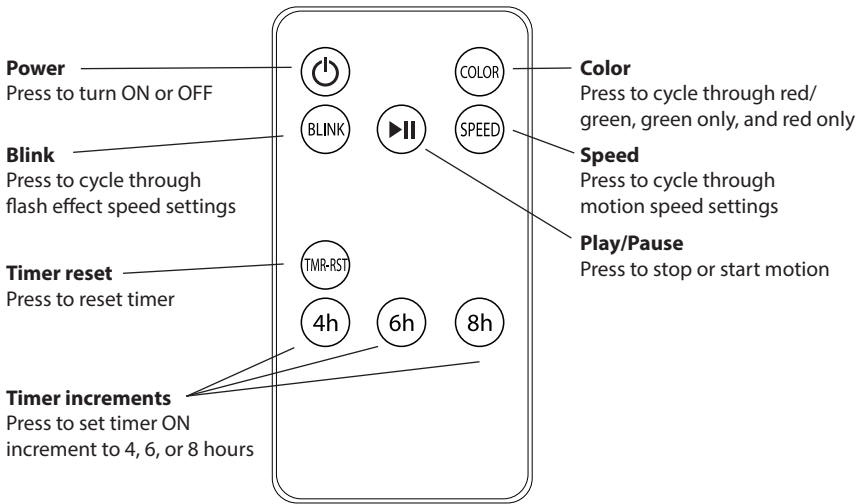
Surface clean only with a soft, dry cloth. Unplug unit before cleaning.

DISPOSAL

At the end of its serviceable life, this product should not be treated as household or general waste. It should be handed over to the applicable collection point for the recycling of electrical and electronic equipment.



USING THE REMOTE CONTROL



INCREASING AND DECREASING THE LIGHT ANIMATION SPEED

Press the SPEED button on your remote to choose slow, medium, or fast light animation speed. Press the Play/Pause button to stop the movement or start it again.

PRECAUTIONARY TIPS FOR THE REMOTE CONTROL

- The remote control should be kept dry and away from heat sources. Avoid humidity. If the device responds erratically to the remote control, or doesn't respond at all, check the batteries.
- Do not subject the remote control to undue physical stress, such as striking or dropping it.
- Do not attempt to clean the remote control with a volatile solvent. Wipe it with a clean, damp, soft cloth when cleaning.

FCC Compliance:

This device complies with Part 15 of FCC Rules. Operation is subject to the following two conditions: 1. this device may not cause harmful interference, and 2. this device must accept any interference received, including interference that may cause undesired operation.

For detailed information, see NOTICE on page 1.

BATTERY DISPOSAL

At the end of its serviceable life, this remote should not be treated as household or general waste. It should be handed over to the applicable collection point for the recycling of electrical and electronic equipment.



INSTALLATION TIPS

- **Do not connect the light to a dimmer pack, as a dimmer accessory may damage the laser component.**
- Use only the manufacturer-provided power supply.
- **Limit the use of extension cords.** If you need an extension cord, use only UL, CUL, or CSA approved 3rd party extension cords. When using outdoors, **ONLY** use extension cords that are weather resistant, such as waterproof cords.
- The darker the display area, the brighter your projection will appear. Try to avoid display areas with strong ambient light sources, such as commercial street lights or bright security flood lights.
- If you choose to mount the BlissLights Firefly Motion for down lighting (e.g. from balcony railing, fence line, roof line, etc.), it is recommended that, for safety purposes, your lights are properly mounted using a suitable hanging clamp and safety cable.

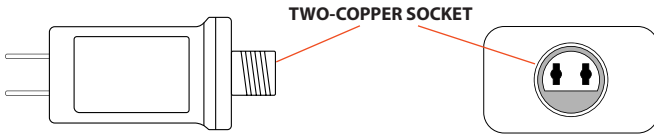
PRODUCT SPECIFICATIONS

Dimensions	110.2 x 103 x 331 mm 4.3 x 4 x 13"
Housing	ABS
Laser Classification	Class 3R
Laser Wavelength	Red—660 nm, Green—515 nm
Maintenance	Maintenance free
Power Consumption	2-9 W, continuous operation 24/7
Power Supply Input	120 V AC, 60Hz (with provided UL/CUL power supply)
Light Input	12 VDC
Operating Temperature	19°F to 95°F (-7°C to 35°C)
Operation	Indoor/outdoor
Projection Coverage	Up to 50 x 50' (15.2 x 15.2 m)
Remote Control Functions	Power, increase speed, decrease speed
Timer	4/6/8 timer (on for 4/6/8 hours/off for 20/18/16 hours)
Warranty	One-year warranty

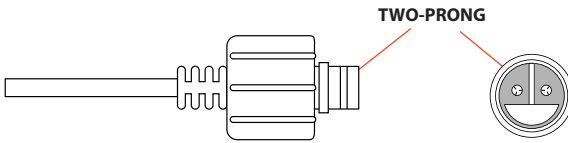
TROUBLESHOOTING

How to plug-in your laser projector:

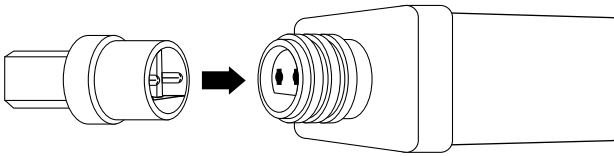
1. Locate the two-copper socket at the bottom of the power supply provided.



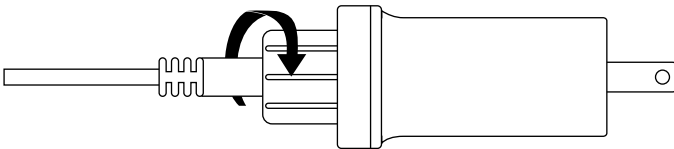
2. Locate the two-prong side of the cord that comes with the fixture.



3. Align to the two-copper socket and insert directly.

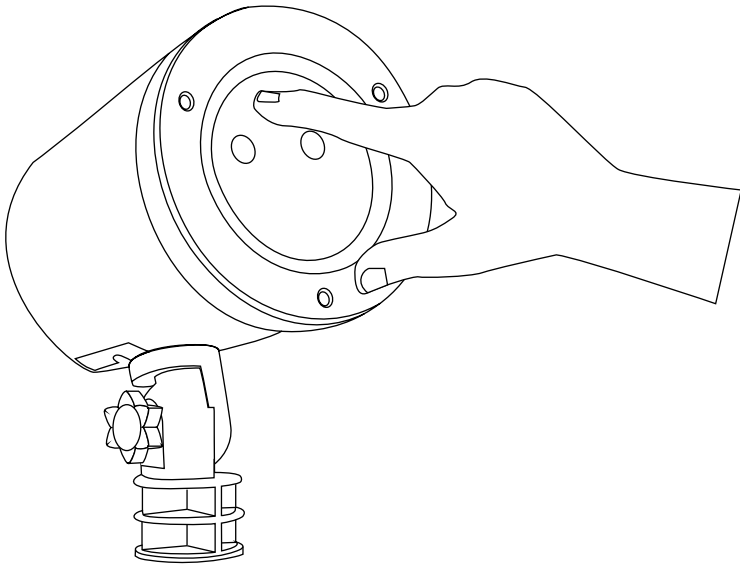


4. Secure the water seal and plug it in into any standard AC outlet to turn on the laser projector.



How to avoid a rotation problem:

If the rotation of your Firefly Motion starts and stops randomly, there is a wireless signal interference (i.e. radio control toys, remote controls for TV or entertainment systems, automatic vacuums, etc.). To verify if this is the case, please try covering the receiver between the dual laser lenses with your finger to block stray infrared signals from entering the Firefly Motion. If this corrects the problem, please check the other electronic products running in the room to determine where the stray signals are coming from.



1-YEAR LIMITED WARRANTY

This product carries a one (1) year warranty against defects in workmanship and materials. BlissLights, LLC agrees to replace the defective product free of charge within the stated warranty period, when returned by the original purchaser with proof of purchase. This product is not guaranteed against wear or breakage due to misuse and/or abuse. For more detailed warranty information, please visit www.blisslights.com/warranty/

Made in China
Designed in the USA
By BlissLights, LLC
San Marcos, CA 92069



www.blisslights.com