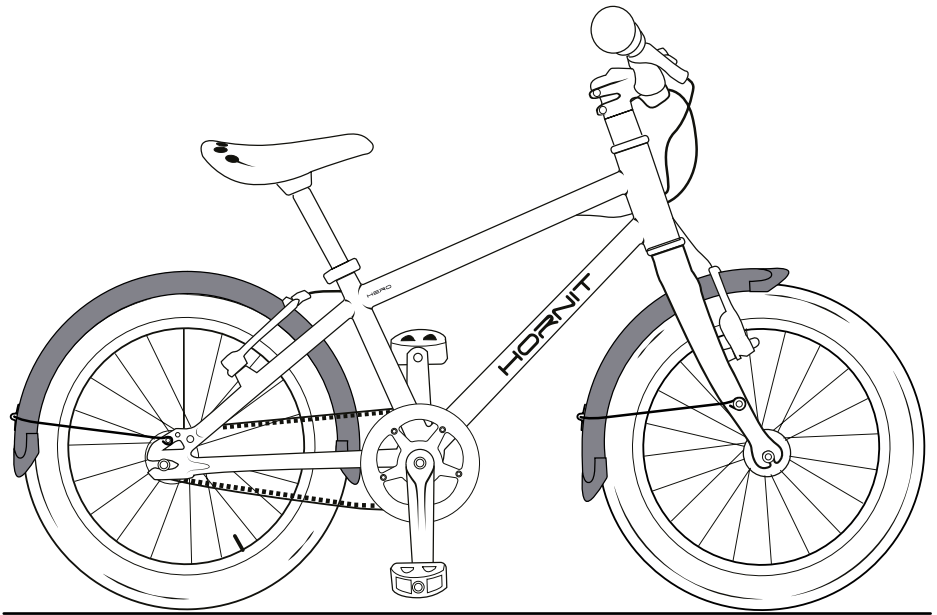


# HORNIT

## HERO



Mudguard Installation



## Components



1x Hex Head Nut



x1 Washer



x2 Inner Bracket



x2 Outer Bracket



x1 Long Socket Bolt



x2 Socket Screw



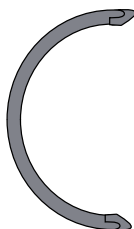
x4 Phillips Screw



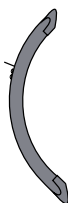
x1 Push Rivet



x1 Hex Head Screw



Rear Mudguard



Front Mudguard

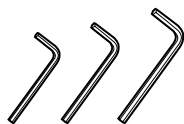


Rear Chainstay

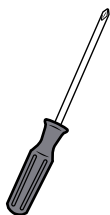


Front Forkstay

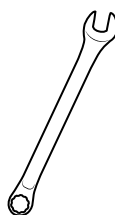
## Tools required



3, 4 & 5mm  
Allen keys



Phillips  
Screwdriver



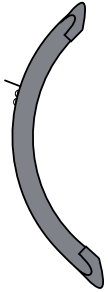
8mm or adjustable  
Spanner



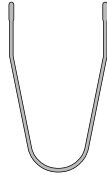
Bike Pump



## Components



Front  
Mudguard



Front  
Stay



x2 Phillips Screw



x1 Long Socket Bolt



x1 Nut



x1 Washer

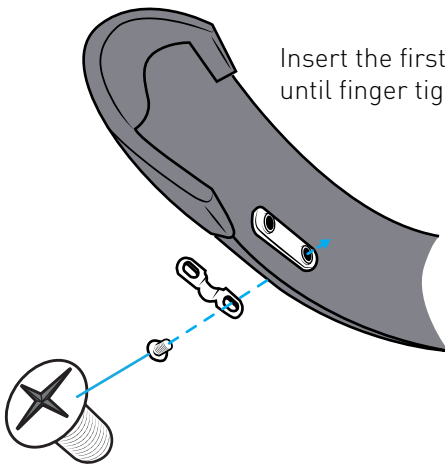


x1 Inner Bracket

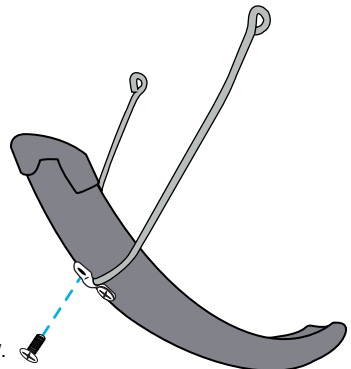


x1 Outer Bracket

Rest the bike upside down on a soft surface such as carpet. Undo the brake callipers and remove front wheel by loosening axle bolts and carefully lifting out of dropouts.



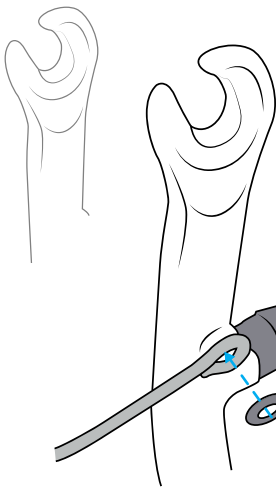
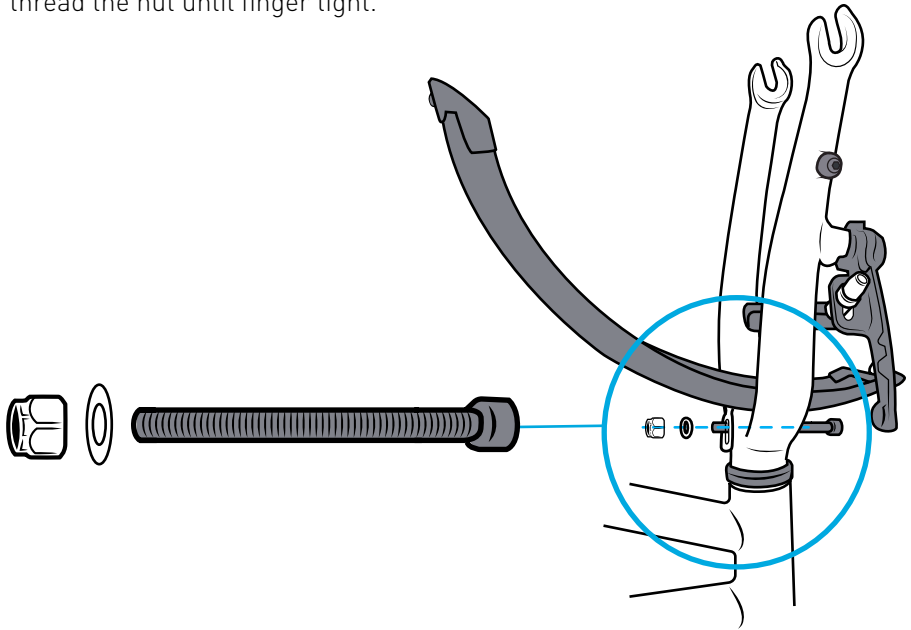
Insert the first Phillips head screw for the stay bracket until finger tight (you will securely fasten later).



Insert the stay and secure with the second screw.



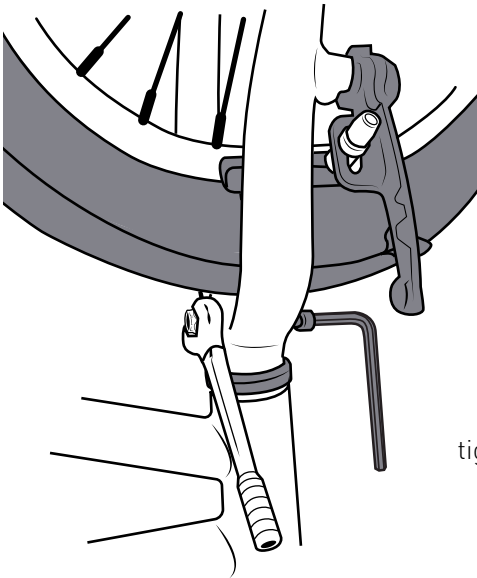
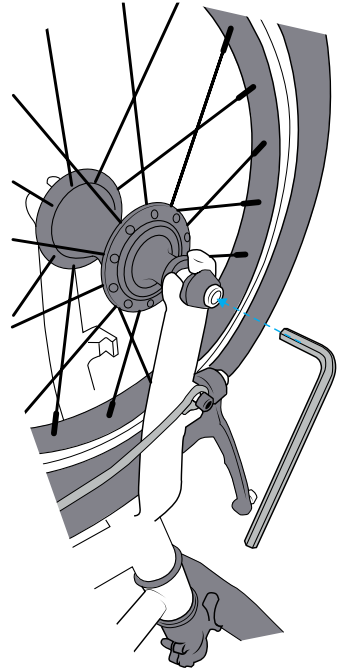
Attach the mudguard by placing the mounting plate at the rear of the forks, insert the long socket bolt and washer then thread the nut until finger tight.



Using a 4mm Allen key attach the stay loops to the forks using existing bolts.



Locate the wheel in the dropouts and tighten axle bolts. Check mudguard alignment then tighten the Phillips head screws in the bracket.

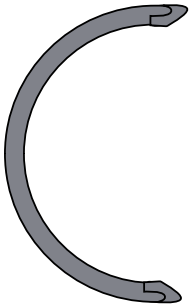


Using a spanner and 5mm Allen key, tighten the socket bolt until fully secure.

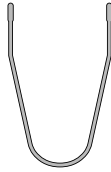
Reattach brake and test.



Components



Rear  
Mudguard



Rear  
Stay



x1 Push Rivet



x1 Hex Head Screw



x2 Socket Screws



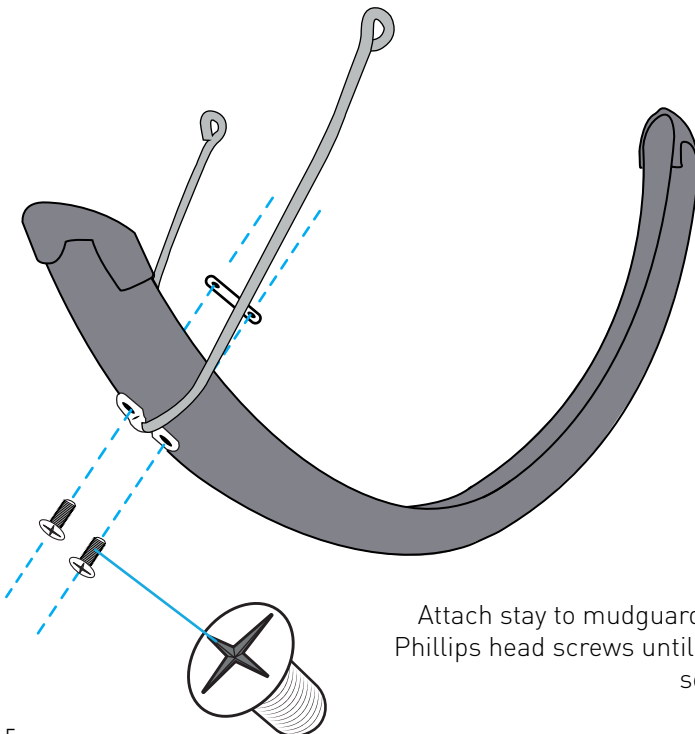
x2 Phillips Screws



x1 Inner Bracket



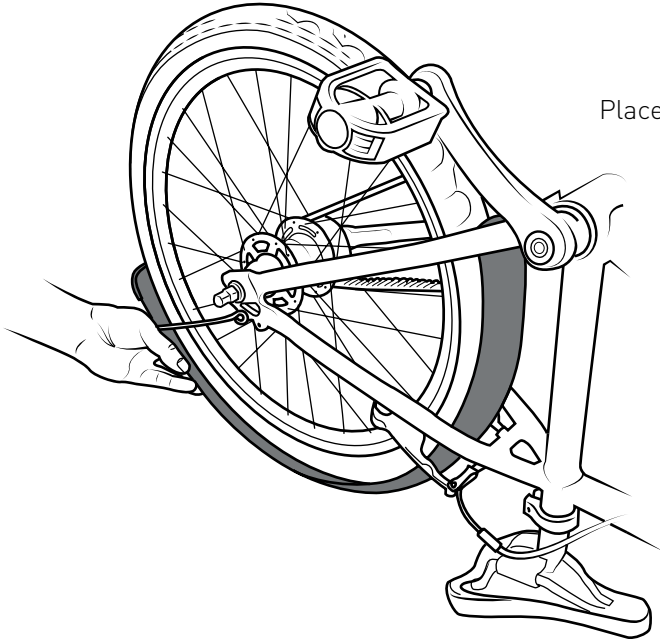
x1 Outer Bracket



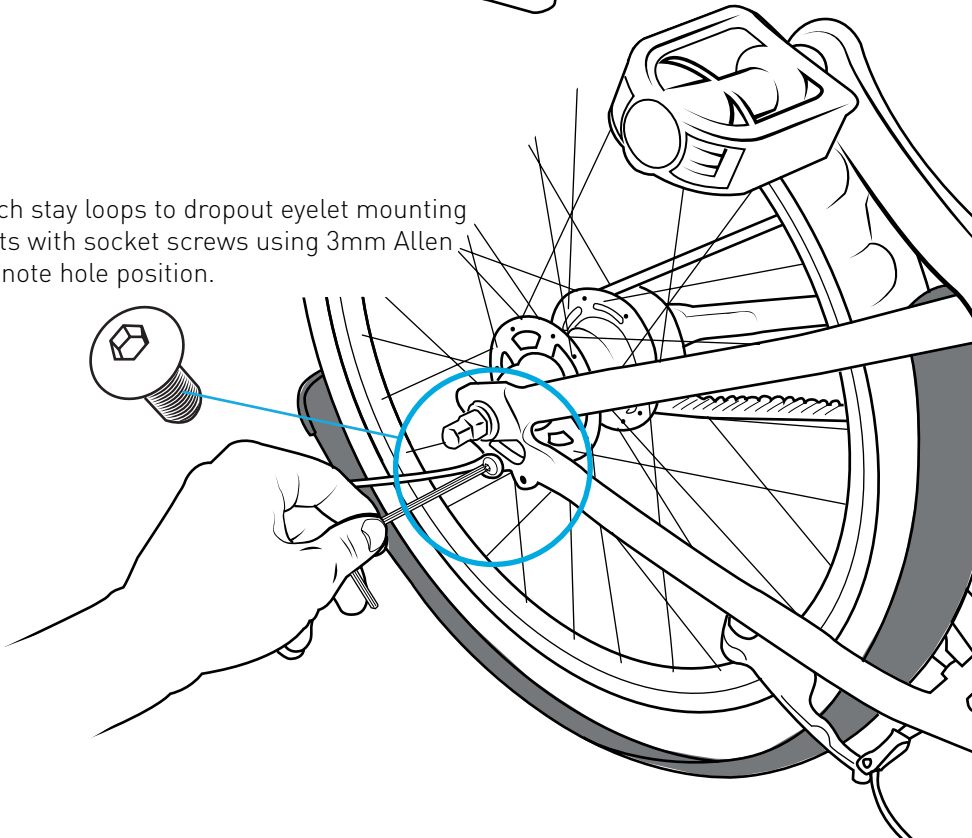
Attach stay to mudguard using brackets and Phillips head screws until finger tight (you will securely fasten later).



Place mudguard around wheel.

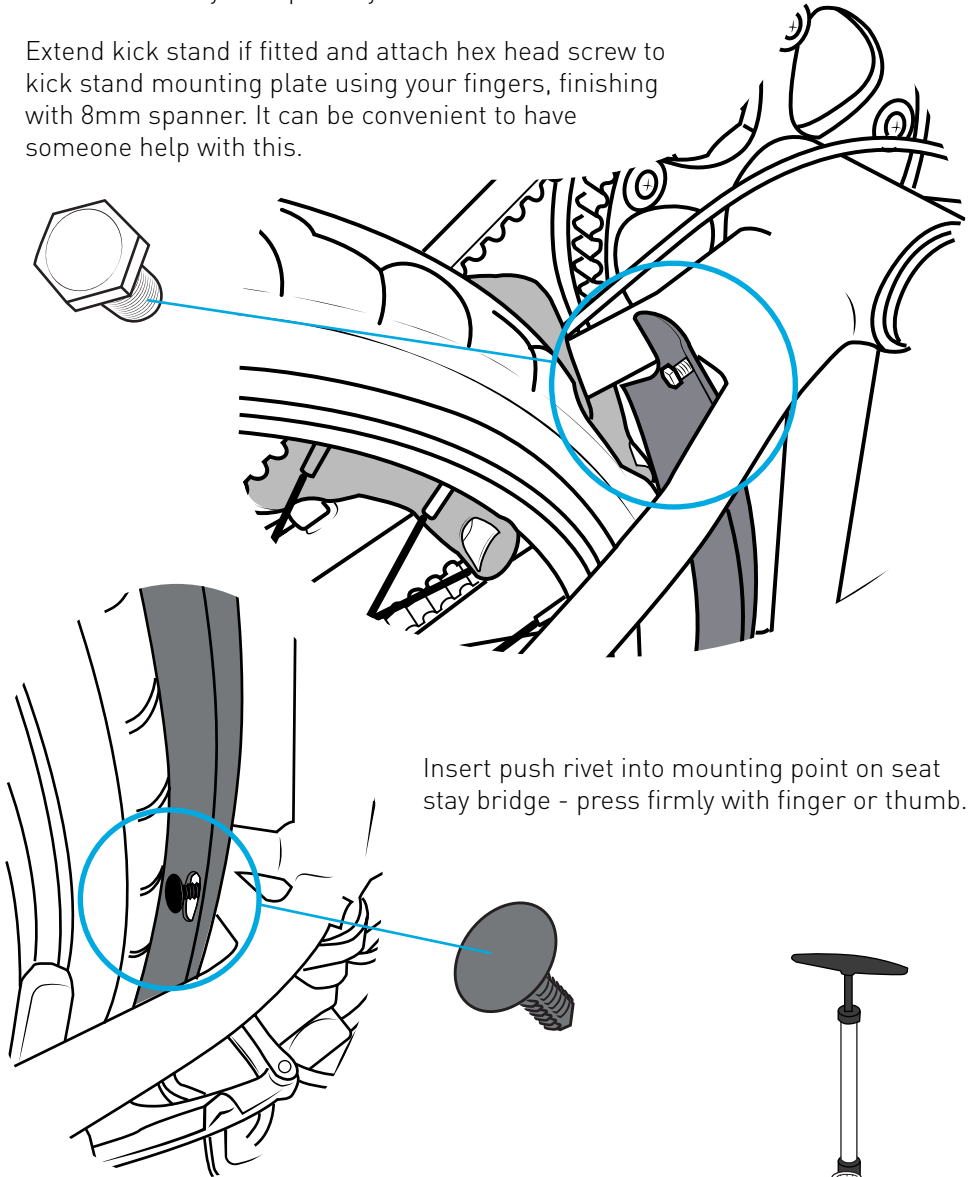


Attach stay loops to dropout eyelet mounting points with socket screws using 3mm Allen key, note hole position.



Deflate tyre by removing valve cap and pushing metal pin with an Allen key. Compress tyre to increase access.

Extend kick stand if fitted and attach hex head screw to kick stand mounting plate using your fingers, finishing with 8mm spanner. It can be convenient to have someone help with this.



Insert push rivet into mounting point on seat stay bridge - press firmly with finger or thumb.

Reinflate tyre 40-65psi (2.8-4.6bar) and check braking action and that mudguard sits true. Tighten all fixings.

