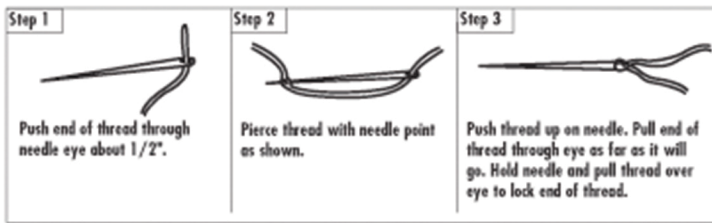


# HOW TO HAND STITCH

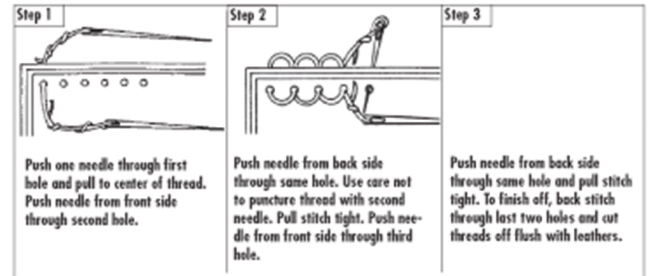
## How to Thread the Needle

Note: Attach a needle to each end of thread, following these instructions.



## Using 2 Needles

The amount of thread required for Hand Stitch is about 3 times the distance to be stitched.



## Using One Needle

The amount of thread required for Hand Stitching is about 3 times the distance to be stitched.

