

SQUAD

FORCE

2023 Squad Force Assembly Guide

Table of contents

Tools needed & Spare Parts Kit	3
Squad Force Specification	4
Squad Force Torque Specifications	5
Squad Force Aero Thru Axle Installations /Wheels	6
Squad Force Shimano Di2 Routing	7
Squad Force Shimano Ultegra Mecanical Routing	8
Squad Force Hydraulic Brake Routing ACR.....	9
Squad Force Modular Handlebar spec.....	10
Squad Force Geometry spec sheet	11
Squad Cycles Customer Support	12

This manual outlines the process and procedure associated with the installation of Squad Cycles components, as well as the routing of shifting and braking control lines only. Proprietary parts referenced in this manual are available only through Squad Cycles Inc. Failure to use the specified parts and follow these assembly instructions, may result in loss of control while riding; and lead to serious injury. If you have any question please contact Squad Cycles Customer Service Staff

LIST OF TOOLS & SUPPLIES

1. Set of Allen Key



2. Torque Wrench



3. Chain Tool



4. Rotor Tool



5. Cassette Lockring



6. Bleeding Kit Disc



7. Hydraulic Hose Cutter



8. Mineral oil



9. 8 mm Wrench



10. Di2 Wire Tool Shimano



11. Cables and Housing cutter



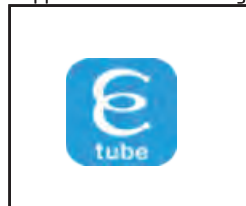
12. Utility Pick Set



13. Premium Bicycle grease



14. Shimano E-Tube project app customizable setting



13. Rear Derailleur Hanger



14. Seat Post Clamp



Note:

All non-proprietary components such as those from Shimano are available from your local distributor.

Squad Cycles strongly recommends that all assembly and adjustment procedures be performed by a Professional bike mechanics,

Squad Force Specifications

Tire Clearance

You can install from a minimum of 700x25c to a Maximum of 700x32c

Brakes

Rear brake: 140/160mm disc Rotor
 Front brake: 140/160mm disc Rotor

Saddle Clamp

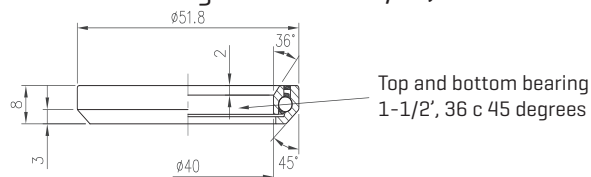
The Saddle Clamp is compatible with 7 mm & 7.9 mm Carbon Rail, Titanium rail or Oval rail all compatible

HeadSet

ACR Technologie

Top Bearing : MR127 1-1/2", 36 x 45 degree

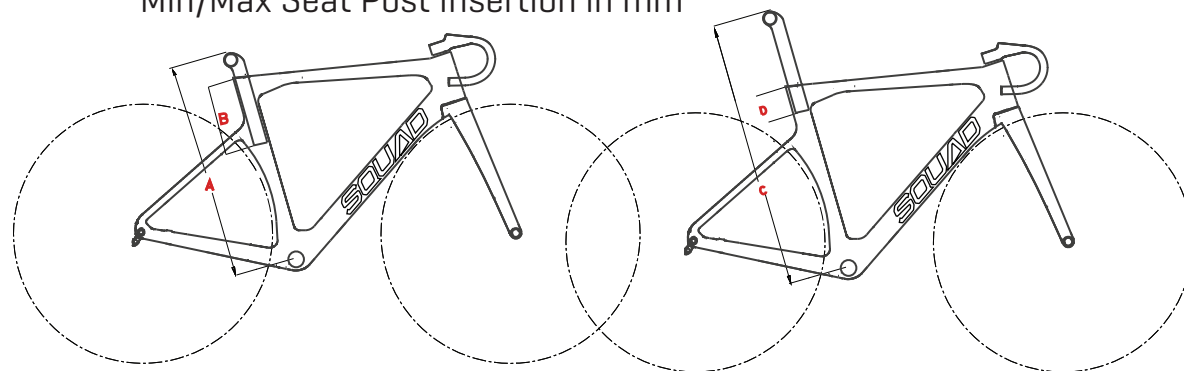
Bottom Bearing : MR127 1-1/2", 36 x 45



Seat Post

Squad Force D shape aero seat post is only compatible to the Force Frameset

Min/Max Seat Post Insertion in mm



		X-Small	Small	Medium	Large	X-Large
A	Saddle Height minimum	540	575	613	650	685
B	SP Max Insert	215	245	250	285	320
C	Saddle Height Maximum	740	775	813	850	885
D	SP Min Insert	90	90	90	90	90

Refer to the tables below for details on Saddle Height and SeatPost insertion limits.

i. The correct frame size must be determined according to the saddle height limits.

- A. Minimum Saddle Height
- C. Maximum Saddle Height

Bottom Bracket

Squad Force Bottom Bracket BB86 [Press fit] / 41 mm

Power Meter

The majority of the powermeters available on the market are compatible with the Force. [SRM, Shimano, Quarq, Power2max, etc...]

Squad Force TORQUE SPECIFICATIONS

Components	Tool	Torque NM	Note
Crank			
Bottom bracket - Press-fit thread together	BB86 Press Fit Tool	12 NM	
Derailleur			
Rear derailleur Hnager fixing nut (disc brake)	3 mm allen key	6 NM	
Seat Post			
Di2 internal battery mount	2.5 mm allen key	4 NM	
Saddle Clamp Bolt	5 mm allen key	10 NM	Tight the 5 mm first before play with the level screw (3 mm) adjustment screw
Saddle Clamp Level Adjuster bolt (L & R)	3 mm allen key	3 NM	Preferable to used a torq wrench, you have gap for tilt.
Frame & Handlebar			
Water bottle cage bolts	5 mm allen key	4 NM	
Integrated Stem to carbon handlebar	4 mm allen key	6 NM	
Handle Bar Top Cap	5 mm allen key	6 NM	
Seat Post Clamp	5 mm allen key	6 NM	Always make sure that the seat post is at the right height, use torque whrench
Front Thure Axle	6 mm allen key	12 NM	The Robert Project axle
Rear Thru Axle	6 mm allen key	12 NM	The Robert Project axle

Correct tightening torque of threaded fasteners is crucial to your safety.

Always tighten fasteners to the correct torque. In case of a conflict between the instructions in this manual and those provided by a component manufacturer, consult with your Professional local mechanics or Squad Cycles Customer Service for precaution.

Fasteners that are too tight can stretch and deform. Fasteners that are too loose can move and fatigue.

Either mistake can lead to a sudden failure of the fastener.

Use only a correctly calibrated torque wrench to tighten critical fasteners on your bike.

Carefully follow the torque wrench manufacturer's instructions on how to set and use the tool for accurate results.

Ensure you read all relevant documentation and have the correct tools prior to attempting any adjustments yourself.

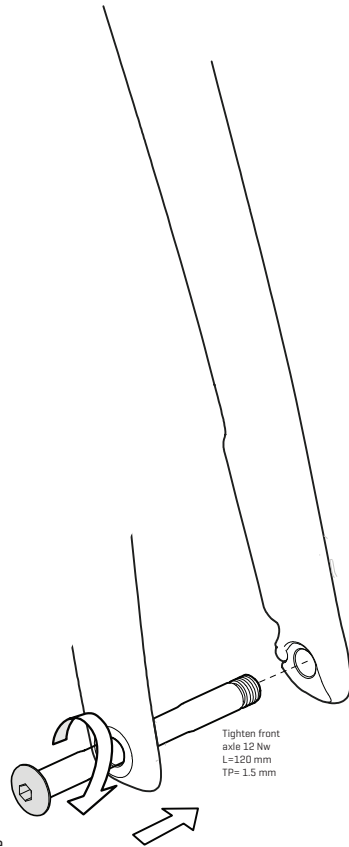
In any case we recommend the assistance of professional bike mechanics.

Squad Force Aero Thru-Axle Installation

Squad Aero Thru-Axle

Made in USA by
The Robert Axle Project

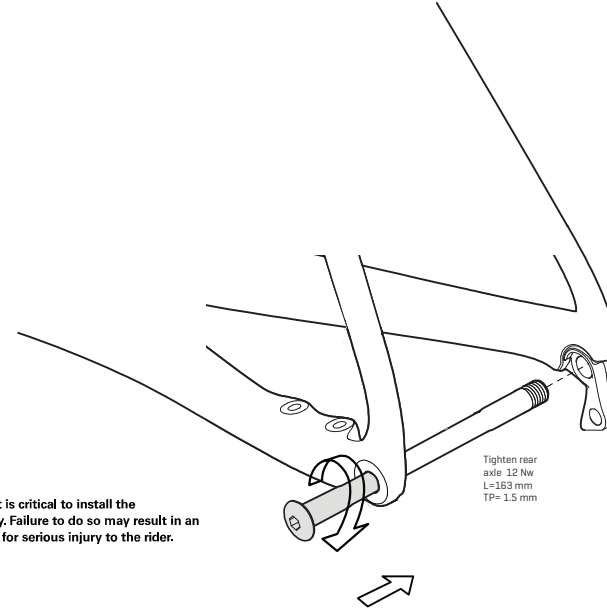
6 mm allen Key / Torque



To secure wheels, install the greased axle, through the drop out and the wheel hub, aligning the threaded end of the axle with the threaded insert. Once aligned and engaged, thread the axle (clock-wise) into the threaded component of the insert until the axle is secured tightly.

⚠ WARNING

To ensure rider safety, it is critical to install the Aero Thru-Axle correctly. Failure to do so may result in an accident with potential for serious injury to the rider.

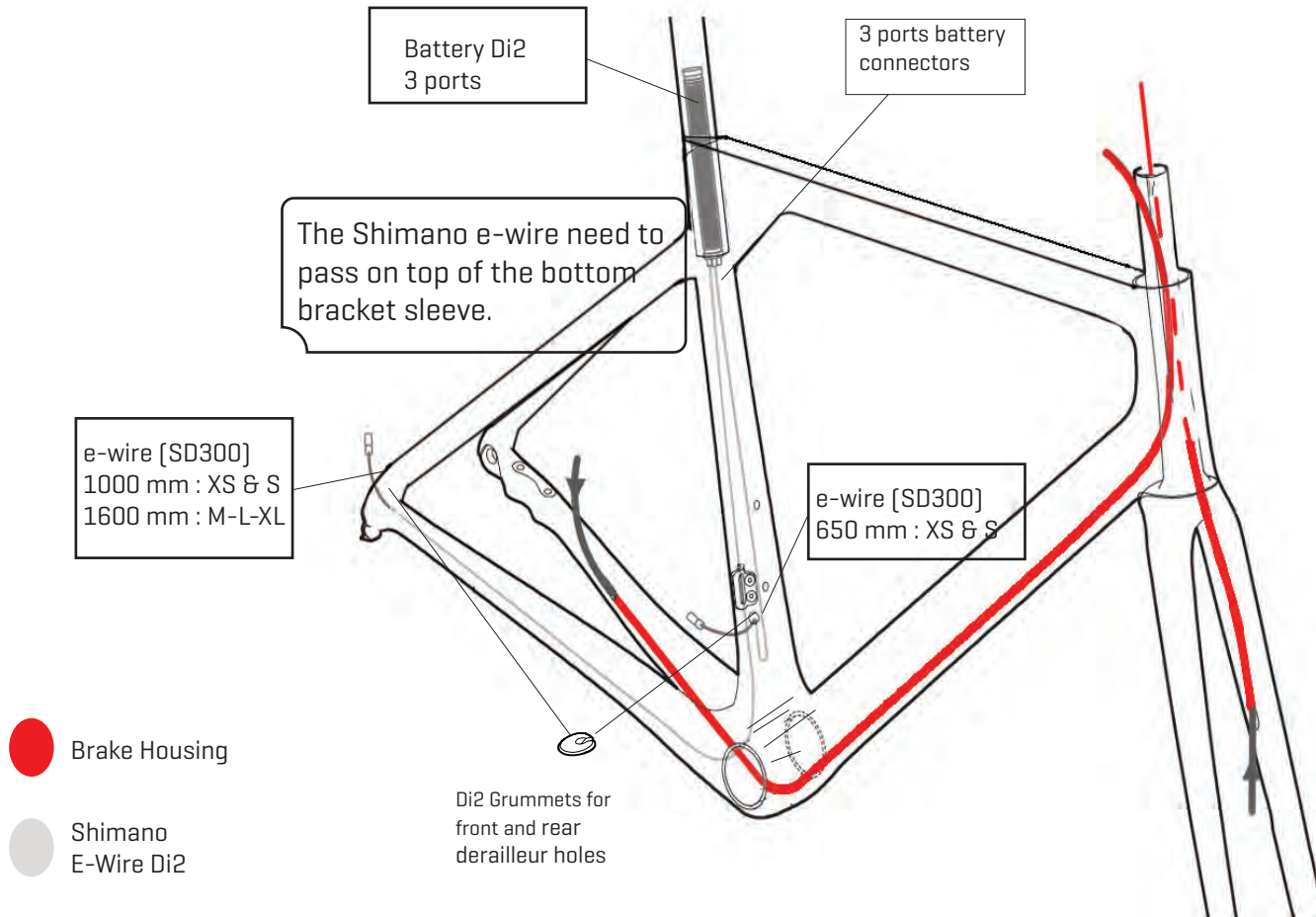
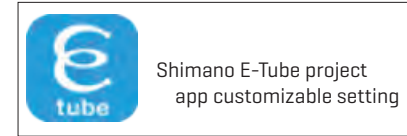


INSTALLATION INSTRUCTIONS: LIGHTNING BOLT-ON THRU AXLE

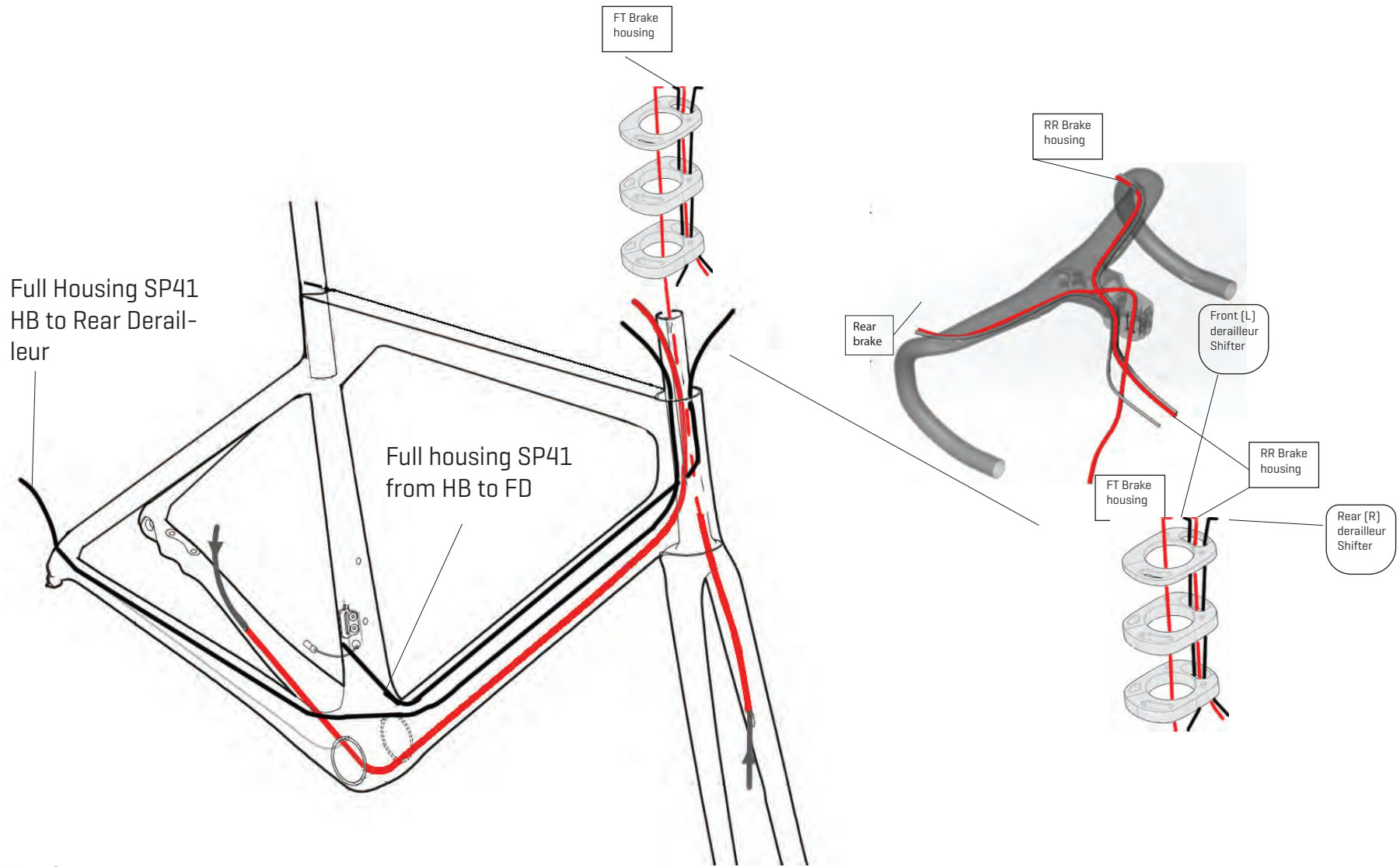
Tools Required:

- Torque wrench with 6 mm hex wrench adapter
- Grease

Squad Force Brake Hose Routing & Di2 Cable



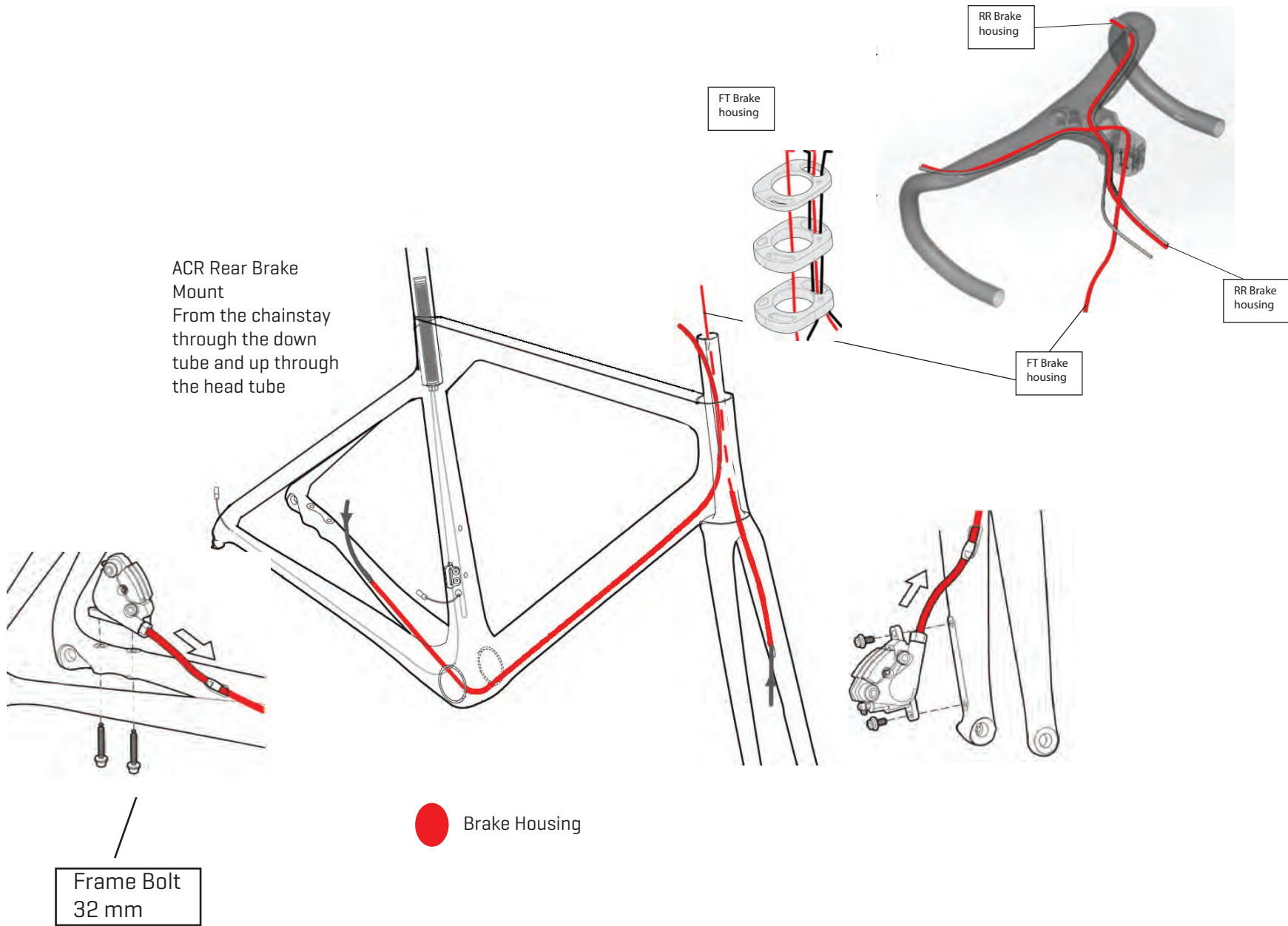
Squad Force Brake Hose Routing & Mechanical routing (Shimano Ultegra)



● Brake Housing

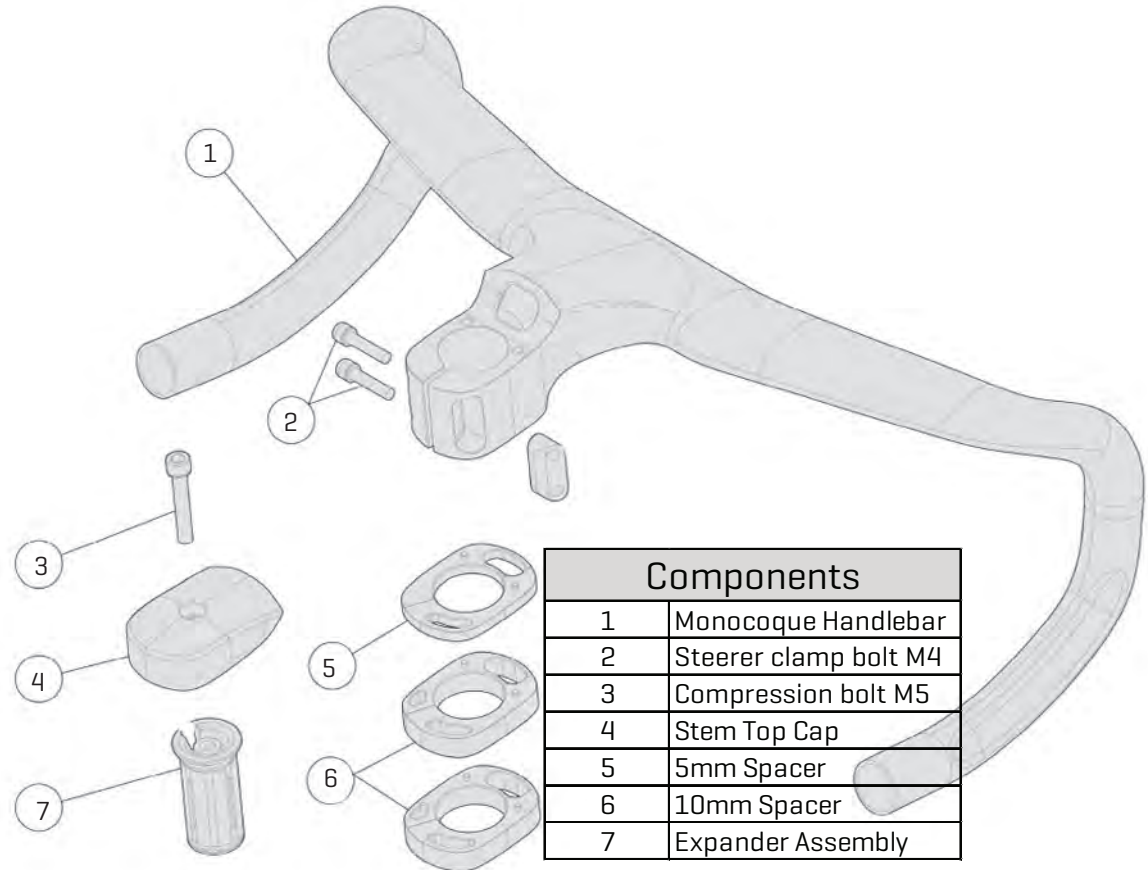
● Shimano SP41 Shifting mechanical housing

Squad Force Brake Hose Routing



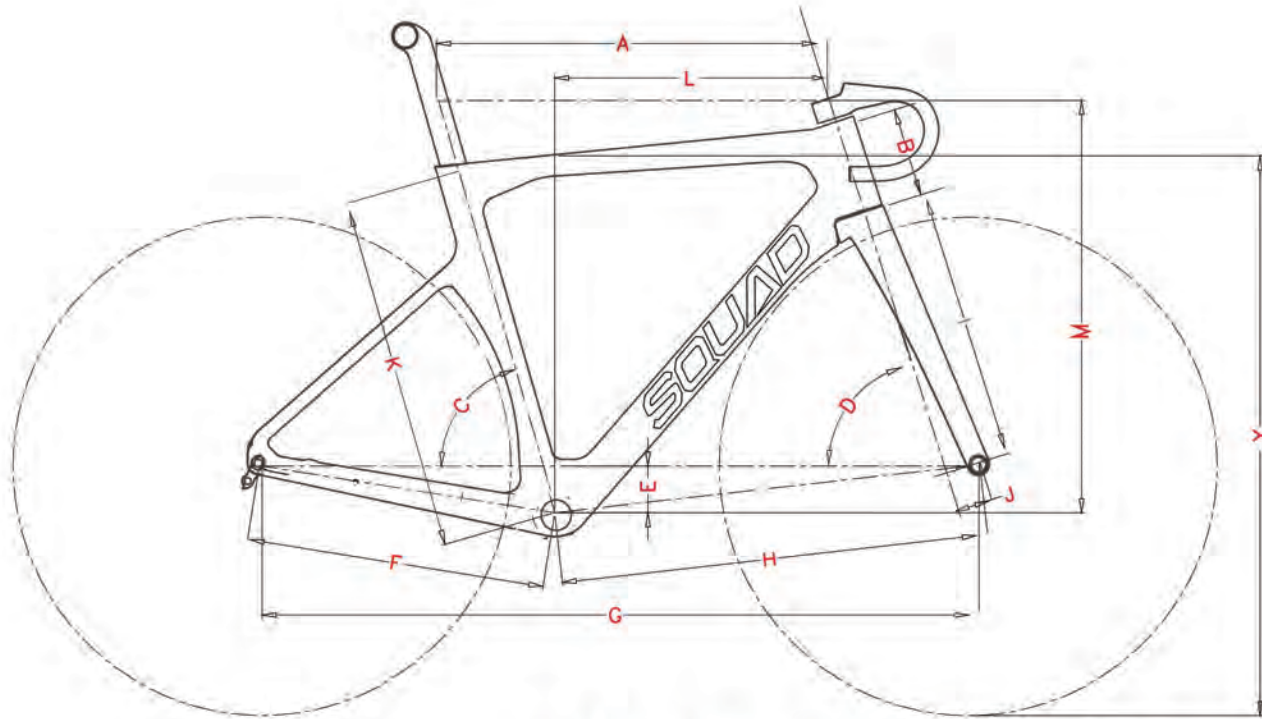
Squad Force Modular Integrated Handlebar

Squad Modular Handle bar size		
Size	Reach	Drop
380mmx90mm	80mm	125mm
380mmx100mm	80mm	125mm
400mmx90mm	80mm	125mm
400mmx100mm	80mm	125mm
420mmx90mm	80mm	125mm
420mmx100mm	80mm	125mm
420mmx110mm	80mm	125mm
440mmx100mm	80mm	125mm
440mmx110mm	80mm	125mm
440mmx120mm	80mm	125mm



Pre-adjust Expander (7) so it contacts the inner walls of the steerer tube but still can slide inside. Tighten Expander (7) with a 6mm hex wrench to 6-9 Nm. Do not over-tighten the Expander (7) to 9 Nm. damage may occur. Install the pre-adjusted Expander, Compression Bolt (3), and Top Cap (4) into the steerer tube by use Fixing Bolts . Tighten the Fixing Bolt to preload the headset bearings. Adjust the headset preload per the headset manufacturer's instructions. There should be no play in the headset, but the bearings should not feel rough or bind. Tighten the Fixing Bolt (3) with a 5mm hex wrench to 5

SQUAD



		X-Small	Small	Medium	Large	X-Large
A	Top tube length	518	530	545	560	575
B	Head tube length	110	115	135	155	175
C	Seat tube angle	73.5°	73.5°	73.5°	73.5°	73.5°
D	Head tube angle	71°	71.5°	72°	72.5°	73°
E	BB drop	68	68	68	68	68
F	Chain Stay	410	410	410	410	410
G	Wheel base	971.1	979.3	990	1000.7	1011.1
H	BB to front wheel	570.9	579	589.6	600.29	610.6
I	Fork length	368	368	368	368	368
J	Fork Rake	45	45	45	45	45
K	Seat Tube Total lenght	460	490	520	550	580
L	Reach	366.4	373.6	385.3	394.1	403
M	Stack	511.9	527.9	539.1	560	580,8



Contacting Customer Support

Visit www.squadcycles.com/contact-us to submit a question to Squad cycles or via our Chat bot on the website.

Product registration

Visit www.squadcycles.com/support to register your Squad bicycle through your Squad account

Warranty

Visit www.squadcycles.com/about to know more about Squad Warranty Policy.