

DH-IPC-HFW5442T-AS-LED

4MP WDR Bullet AI Network Camera



Dahua AI series products adopt the most advanced AI technologies, including deep learning algorithms that primarily target people and vehicles, which provides higher flexibility and accuracy for end-users. This enables the Dahua AI series to offer various advanced applications such as Face Recognition, ANPR, Metadata, People Counting, traffic data statistics, etc. The complete lineup of Dahua AI includes network (PTZ) cameras, network video recorders, servers, and platform management products. Beyond seeing the world, the power of AI allows devices to perceive the environment and understand the world in a better way.

System Overview

Pro AI series contains Face Capture, Perimeter Protection and People Counting functions. Powered by deep-learning Artificial Intelligence algorithms, significantly improved accuracy. Meanwhile, the series features starlight and smart IR technology. This series fully protected from dust and water, certified to IP67 standard.

Functions

Perimeter Protection

Dahua's Perimeter Protection functions significantly improved accuracy. Perimeter Protection reduces false alarms and decreases pixel count requirements for object detection. Perimeter Protection features custom tripwires based on object type for automation in limited access areas such as pedestrian or vehicle-only zones. This combination of advanced AI analytics and real-time alerts to a desktop or to a mobile client reduces system requirements and resources resulting in greater surveillance system efficiency.

People Counting

People Counting function uses advanced image processing technology to capture depth information from within images. The camera pairs this information with deep learning algorithms to analyze and detect human bodies and track target objects in real time. The camera provides statistics for separate individuals' entrance and exit with up to 95% counting accuracy.

- 1/1.8" 4Megapixel progressive scan CMOS
- H.265&H.264 triple-stream encoding
- 25/30fps@2688×1520
- WDR(120dB), Day/Night(Electronic), 3D DNR, AWB, AGC, BLC
- Multiple network monitoring: Web viewer, CMS(DSS/PSS) & DMSS
- 2.8mm fixed lens (3.6mm, 6mm optional)
- 1/1 Alarm in/out, 1/1 audio in/out
- Max. LEDs Length 17m
- Micro SD memory, IP67



Full-color Starlight

The camera adopts F1.6 large aperture lens and 1/1.8" high performance sensor. With higher amount of absorbed light and advanced image processing algorithm, the camera presents an impressive lowlight performance with an exceptional balance between noise reduction and the blur of moving object.

Warm Supplemental lights

With two warm supplemental LED lights, the camera is able to provide a colorful and vivid image even in total darkness. It also provides visible By default, the camera is set to smart light mode, in which the camera can automatically adjust the exposure time and light sensitivity simultaneously to avoid overexposure of the objects in the image center. Also, the sensitivity and intensity of the LED lights can be remotely controlled by OSD menu.

Protection(IP67, wide voltage)

The camera allows for $\pm 30\%$ input voltage tolerance, suitable for the most unstable conditions for outdoor applications. Its 6KV lightning rating provides effective protection for both the camera and its structure against lightning. Subjected and certified to rigorous dust and immersion tests (IP67), the camera is the choice for installation in even the most unforgiving environments.



ONLY THE BEST DEALS FOR SECURITY PRODUCTS

SECUREON.COM.AU

P 1300 888 767



Technical Specification

Camera

Image Sensor	1/1.8" 4Megapixel progressive scan CMOS
Effective Pixels	2688(H) x 1520(V)
RAM/ROM	512MB/128MB
Scanning System	Progressive
Electronic Shutter Speed	Auto/Manual, 1/3~1/100000s
Minimum Illumination	0.0016Lux/F1.6 (Color,1/3s,30IRE) 0.015Lux/F1.6 (Color,1/30s,30IRE)
LED Distance	Distance up to 17m (56ft)
LED On/Off Control	Auto/ Manual
LEDs	2

Lens

Lens Type	Fixed				
Mount Type	Board-in				
Focal Length	2.8mm,3.6mm,6mm				
Max. Aperture	F1.6				
Angle of View	H: 113°, V:60°/H: 89°, V:48°/H: 56°, V:31°				
Optical Zoom	N/A				
Aperture Type	Fixed				
Close Focus Distance	1.3m(4.27ft)/1.9m(6.23t)/3.8m(12.47ft)				
DORI Distance	Lens	Detect	Observe	Recognize	Identify
	2.8mm	58m(190ft)	23m(75ft)	12m(39ft)	6m(20ft)
	3.6mm	72m(236ft)	29m(95ft)	14m(46ft)	7m(23ft)
	6mm	113m(371ft)	45m(148ft)	23m(75ft)	11m(36ft)

Pan/Tilt/Rotation

Pan/Tilt/Rotation Range	Pan:0°~360°; Tilt:0°~90°; Rotation:0°~360°
-------------------------	--

Artificial Intelligence

Perimeter Protection	Tripwire, Intrusion(Human & Vehicle classification)
People Counting	Line crossing people counting, Region people counting

General Intelligence

Event Trigger	Motion detection, Video tampering , Scene changing, Network disconnection , IP address conflict, Illegal Access,Storage anomaly
General Intelligence	Object Abandoned/Missing

Video

Compression	H.265+/H.265/H.264+/H.264/H.264B/H.264H/MJPEG(sub stream)
Streaming Capability	3 Streams
Resolution	2688x1520/2304x1296/1080P(1920x1080)/1.3M(1280x960)/720P(1280x720)/D1(704x576/704x480)/VGA(640x480)/CIF(352x288/352x240)

Frame Rate	Main Stream: 2688x1520(1~25/30fps)
	Sub Stream: D1(1~25/30fps)
	Third Stream: 1080P(1~11fps)
Bit Rate Control	CBR/VBR
Bit Rate	H.264: 32~ 8192Kbps H.265: 19~ 8192Kbps
Day/Night	Day/Night: Electronic Auto/ Color / B/W
BLC Mode	BLC / HLC / WDR(120dB)
White Balance	Auto/Natural/Street Lamp/Outdoor/Manual
Gain Control	Auto/Manual
Noise Reduction	3D DNR
Motion Detetion	Off / On (4 Zone, Rectangle)
Region of Interest	Off / On (4 Zone)
Electronic Image Stabilization (EIS)	N/A
Smart IR	Support
Defog	Support
Digital Zoom	N/A
Flip	0°/90°/180°/270°
Mirror	Off / On
Privacy Masking	Off / On (4 Area, Rectangle)

Audio

Compression	G.711a/ G.711Mu/ AAC/ G.726/G.723
-------------	-----------------------------------

Network

Ethernet	RJ-45 (10/100Base-T)
Protocol	HTTP; TCP; ARP; RTSP; RTP; UDP; RTCP;SMTP; FTP; DHCP; DNS; DDNS; PPPoE; IPv4/v6; SNMP;QoS; UPnP;NTP
Interoperability	ONVIF(Profile S/Profile G), CGI,Milestone,Genetec,P2P
Streaming Method	Unicast / Multicast
Max. User Access	20 Users
Edge Storage	NAS FTP Mirco SD card 256GB
Web Viewer	IE(versions newer than IE8), Chrome, Firefox, Safari(versions newer than Safari 12)
Management Software	Smart PSS, DSS, P2P
Smart Phone	iOS, Android

Certifications

Certifications	CE-LVD:EN60950-1 CE-EMC:Electromagnetic Compatibility Directive 2014/30/EU FCC:47 CFR FCC Part 15, Subpart B UL/CUL: UL60950-1 CAN/CSA C22.2 No.60950-1-07
----------------	---

Interface

Video Interface	N/A
Audio Interface	1/1 channel In/Out
RS485	N/A
Alarm	1 channel In: 5mA 5VDC 1 channel Out: 300mA 12VDC

Electrical

Power Supply	DC12V(±30%), PoE(802.3af)(Class 0)
Power Consumption	DC12V:2.2W 6.4W(IR on) PoE:2.8W 7.4W(IR on)

Environmental

Operating Conditions	-30° C ~ +60° C (-22° F ~ +140° F) /10%RH~95% RH
Storage Conditions	+5° C ~ +40° C (+41° F ~ +104° F) (daily temperature difference within 15° C/59° F) / 10%RH~95% RH
Ingress Protection	IP67
Vandal Resistance	N/A

Construction

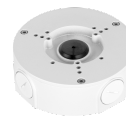
Casing	Metal
Dimensions	244.1mm×79.0mm×75.9mm (9.61"×3.11"×2.99")
Net Weight	0.815Kg (1.80lb)
Gross Weight	1.08Kg (2.38lb)

Ordering Information

Type	Part Number	Description
4MP camera	DH-IPC-HFW5442TP-AS-LED	4MP WDR Bullet AI Network Camera, WDR,PAL
	DH-IPC-HFW5442TN-AS-LED	4MP WDR Bullet AI Network Camera, WDR,NTSC
	IPC-HFW5442TP-AS-LED	4MP WDR Bullet AI Network Camera, WDR,PAL
	IPC-HFW5442TN-AS-LED	4MP WDR Bullet AI Network Camera, WDR,NTSC
Accessories (optional)	PFA130-E	Junction box
	PFA152-E	Pole Mount
	PFA151	Corner Mount

Accessories

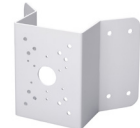
Optional:



PFA130-E
Junction box



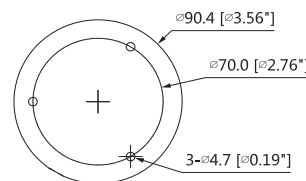
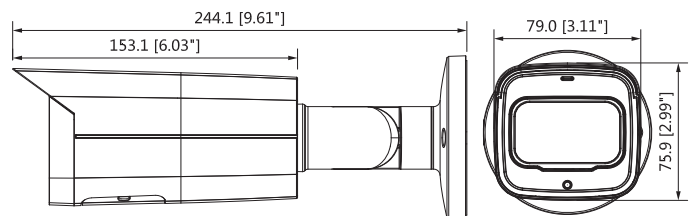
PFA152-E
Pole Mount



PFA151
Corner Mount

Junction Mount	Pole Mount	Corner Mount
PFA130-E	PFA130-E+ PFA152-E	PFA130-E + PFA151

Dimensions (mm/inch)



ONLY THE BEST DEALS FOR SECURITY PRODUCTS

SECUREON.COM.AU

P 1300 888 767