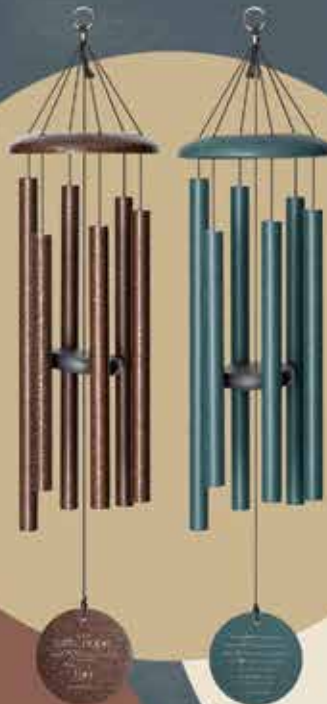


# Wind River®

2024-25  
CATALOG

## Handcrafted in Virginia

Influenced by the shores, mountains and valleys we call home, Wind River® chimes create a symphony in any space and will always *inspire harmony.*



CRAFTED IN VIRGINIA  
Wind River®  
ESTABLISHED 1986

### Meet the Owners



Hello! We are Jamie and Patty Baisden, and we purchased QMT Windchimes® (now Wind River®) in 2006. Together, we bring a unique passion and vision to Wind River® that can be seen in every set of wind chimes we sell.

We both graduated from Virginia Tech. We have two children, two granddaughters and a newly arrived grandson! We enjoy spoiling our grandkids, vacationing in the mountains, and participating in our local Rotary club's charitable events.

We know what it's like to be entrepreneurial, and so we have a great tool kit to draw from to help small business owners market and sell windchimes to their customers. We know how to make the purchase, display, and selling of our artisan wind chimes a success for you and your business and help you achieve your entrepreneurship goals!

### About Wind River®

At Wind River®, we believe that music speaks to everyone, and melody lives forever. Memories are shaped by the soundtracks that play for a moment in our ears—and echo forever in our hearts.

For more than 30 years, we've studied and perfected what we call "the Science of Sound." Our chimes are individually handcrafted and hand-tuned, for exceptional precision and lasting beauty. From the shape of the components to the materials we use, every detail is tested and engineered to deliver superior resonance and tone.

The result is chimes that are inspired by nature and designed to make the natural world even more inspiring. Our chimes are made in Virginia and influenced by the shores, mountains and valleys we call home. Every color palette is a walk in the woods. Every chord is a choir of birds across the bay. And every breeze brings with it renewed beauty, mystery and wonder.

Wind River® chimes create a symphony in any space. But as soon as you bring one home, you realize it's so much more than a piece of musical garden décor.

It's a reminder to rest. It's a moment of calm amid the chaos of daily life. And it's a cue to pause, listen, reflect—and **BREATHE**.

Because in life, the winds of change are always moving. But no matter where they carry you, Wind River® chimes will always inspire harmony.





# Table of Contents

## WIND RIVER® PREMIER COLLECTION

Chimes for a modern world, our contemporary wind chimes have streamlined designs and finishing touches that make them the top of their class. These chimes are trendsetters with unmatched sound and resonance.

**5 Arabesque®** Just like in ballet, these wind chimes will dance their way into your heart and soul as they raise the standard for your outdoor decor.

**Corinthian Bells®** Our best-selling chime for over 15 years with a timeless style and numerous color and size options.

**9 Original**

**12 Eclipse**

**13 Harmonies**

## WIND RIVER® DELUXE COLLECTION

An excellent balance between performance and value, these chimes combine some of the features of our premier collection with natural redwood accents found in our classic chimes.

**15 Shenandoah Melodies®** Like a winding river, these wind chimes will calm your soul with their superior quality.

## WIND RIVER® CLASSIC COLLECTION

These classic chimes are perfect for the everyday needs of our customers. Fitting for any environment and style, these wind chimes are perfect for customers from all walks of life.

**19 Festival®** These festive chimes provide our signature quality at a mid-range price point.

**21 Arias®** The original brand of QMT Windchimes® (now Wind River®) with stellar craftsmanship at an affordable cost.

## PRODUCTS FOR SPECIAL OCCASIONS

Sometimes life requires a special gift for a special moment. These wind chimes and bird houses provide the quality our customers know and expect with a unique component for special moments in life.

**23 In Loving Memory®** These wind chimes provide a touching remembrance for loved ones who have passed.

**25 For the Girls®** These pink chimes support breast cancer charities with every wholesale purchase.

**26 Mountain View®** Share the Wind River® love with your neighborhood wildlife!

**1 About Wind River®**

**18 Licensed & Specialty Chimes**

**3 Made in the USA**

**18 Meditation Chimes**

**7 POS Displays**

**25 Tree Hooks**

## New This Year

Embrace treasured memories with new collections that capture the sounds and emotions of life's most memorable moments.

**Corinthian Bells Harmonies –** a curated collection of chimes engraved with inspirational, memorial and coastal themes. (see page 13)

**Amtrak Chime –** Capture the rich heritage of American railways in a unique way with the Amtrak wind chime. (see page 18)

**Corinthian Bells Eclipse –** Stellar and sublime, our Lydian chimes are the soundtrack of the Eclipse. (see page 12)



service@windriverchimes.com

## Made in the USA

Our chimes sound exceptional because they are exceptional.

We pride ourselves in our outstanding quality wind chimes made from raw materials sourced in the United States. Our largest suppliers are located in Florida, Georgia, Ohio, and New York, and we work hard to source our materials from fellow USA companies. We craft and assemble all of our hand-tuned chimes and ship them from our warehouse in Virginia.

**Pinned Tubes:** Pinned chimes use a “single string” tied to a pin inside the pipe that allows the pipe a full range of motion. Most traditional chimes have a string running in between each pipe in a zig-zag fashion. The resonance of pinned chimes will linger much longer than the traditional construction, since

the sound is not dampened by the string when the pipe moves.

**Striker Density:** Made from an Ultra High Density Polymer, our strikers use a soft material with a lot of mass. This gives our chimes a lot of sound without a harsh tone upon impact - creating the rich, mellow tones we're famous for.

**Aluminum Alloy Pipes:** Alloys can be made in many ways, each with its own musical properties. We have selected the aluminum alloy used in our pipes for its exceptional sound quality.

**Redwood:** We choose redwood for our wind chimes because it is sustainable, rot-resistant, and beautiful. It is also a softer wood, which creates a more mellow sound as it strikes a pipe.

**Nylon Cording:** We use braided nylon cording in all of our chimes. It is made for the outdoors and is treated to resist sun-damage from UV radiation.

**Warranties:** We know our chimes and we stand by them because we make them ourselves. Each brand is backed by our personal warranty against defects in craftsmanship or materials.

**Wind River's Warranty Program:** Each of our chimes has a card with information about the warranty enclosed in the box. The warranty covers all parts in regards to errors in workmanship and materials, such as a sharp spot on a tube that causes a string to wear through.

### What Is Not Covered?

The warranty does not cover normal wear and tear or loss of parts or any alterations from the original product. Aesthetic damage to the tubes or wind sail from repeatedly banging together or hitting another object does not affect the sound of the chime and is not covered by the warranty. This is normal wear and tear over either a very long time or excessive repeated contact with some object. Under normal use, the tubes of the chime should not hit each other. Chimes should be hung where they do not make contact with anything and should be taken down during extreme weather events.



View our  
Made in Virginia video  
to learn more



## Wind River® Assortments

Our new Wind River® display assortments combine bestselling chimes from several of our top brands to deliver a variety of styles with one display. Combine our classic Festival, bestselling Corinthian Bells®, and elegant Arabesque® chimes to give your customers a sampling of our best chimes at a wide range of price points.



### Single

#### Assortments

| Length / SKU   | WR1 | WR1RFL |
|----------------|-----|--------|
| 18" - F336     | 2   | 2      |
| 24" - F416     | 1   | 1      |
| 24" - F418     | 1   | 1      |
| 28" - F635     | 1   | 1      |
| 27" - T106     | 2   | 2      |
| 30" - T206     | 1   | 1      |
| 36" - T306     | 1   | 1      |
| 44" - T406     | 1*  | 1      |
| 50" - T516     | 1   | 1      |
| 32" - AR206    | 1   | 1      |
| 36" - AR306    | 1   | 1      |
| 44" - AR406    | 1   | 1      |
| 50" - AR516    | 1   | 1      |
| SINGLE DISPLAY | 1   |        |

\* Includes one T406 chime free of charge as a display offset.

The Single displays 12 chimes and measures 18"x18"x69".

## Windmill

#### Assortments

| Length / SKU     | WRWM | WRWMRFL |
|------------------|------|---------|
| 18" - F336       | 4    | 4       |
| 24" - F416       | 4    | 4       |
| 24" - F418       | 4    | 4       |
| 28" - F635       | 4    | 4       |
| 27" - T106       | 6    | 6       |
| 30" - T206       | 6    | 6       |
| 36" - T306       | 4*   | 4       |
| 44" - T406       | 4    | 4       |
| 50" - T516       | 2    | 2       |
| 32" - AR206      | 2    | 2       |
| 36" - AR306      | 2    | 2       |
| 44" - AR406      | 2    | 2       |
| 50" - AR516      | 2    | 2       |
| WINDMILL DISPLAY | 1    |         |

\* Includes two T306 free of charge as display offsets.

The Windmill displays 18 chimes and measures 28"x28"x83".

## Case Pack

#### WRCP1

| Item        | QTY |
|-------------|-----|
| 18" - F336  | 6   |
| 24" - F416  | 3   |
| 24" - F418  | 2   |
| 27" - T106  | 6   |
| 30" - T206  | 4   |
| 36" - T306  | 2   |
| 32" - AR206 | 2   |
| 36" - AR306 | 2   |



## Windmill XL

#### Assortments

| Length / SKU        | WRWMXL | WRWMXLRFL |
|---------------------|--------|-----------|
| 18" - F336          | 4      | 4         |
| 24" - F416          | 4      | 4         |
| 24" - F418          | 4      | 4         |
| 28" - F635          | 4      | 4         |
| 30" - F636          | 2      | 2         |
| 27" - T106          | 6      | 6         |
| 30" - T206          | 6      | 6         |
| 36" - T306          | 6      | 6         |
| 44" - T406          | 4*     | 4         |
| 50" - T516          | 3      | 3         |
| 56" - T626          | 2      | 2         |
| 60" - T736          | 1      | 1         |
| 32" - AR206         | 6      | 6         |
| 36" - AR306         | 4      | 4         |
| 44" - AR406         | 4      | 4         |
| 50" - AR516         | 3      | 3         |
| 57" - AR626         | 1      | 1         |
| 59" - AR736         | 1      | 1         |
| WINDMILL XL DISPLAY | 1      |           |

\* Includes two T406 free of charge as display offsets.

The Windmill XL displays 20 chimes and measures 40"x32"x82".



# Arabesque®

These wind chimes are a sophisticated version of our classic best-selling wind chime, Corinthian Bells®. An “arabesque” is a graceful type of move in ballet, and once you purchase an Arabesque® wind chime you’ll see where they get their name!

These chimes have elegance and grace – with engraved tubes and domes, a curved wind sail with decorative scallops, and a beautiful lacy texture with a glossy finish. These chimes will dance into your heart and make your soul soar!

5 Year Warranty

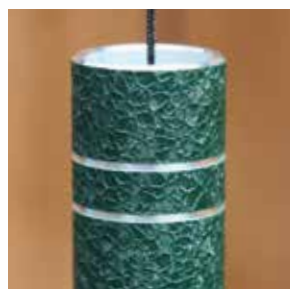


Listen to this chime

|                         | AR206   | AR306 | AR406 | AR516  |
|-------------------------|---|-------|-------|--------|
| <b>Available Colors</b> |   |       |       |        |
| <b>Key Features</b>     | <ul style="list-style-type: none"> <li>• Available in 6 sizes</li> <li>• Engraved tubes and dome</li> <li>• Elegant colors</li> <li>• Curved wind sail</li> </ul> |       |       |        |
|                         |   |       |       |        |
|                         |   |       |       |        |
| Scale                   | A   | E     | C     | A      |
| Colors                  |   |       |       |        |
| Overall Length          | 32"   | 36"   | 44"   | 50"    |
| Tube Diameter           | 0.875"  | 1"    | 1.25" | 1.5"   |
| Longest Tube            | 15"   | 18.5" | 23"   | 27.75" |

## Gift Box

All Arabesque® chimes ship in an attractive gift box.



# Arabesque®

BY WIND RIVER®

AR626

AR736



G

G7



57"

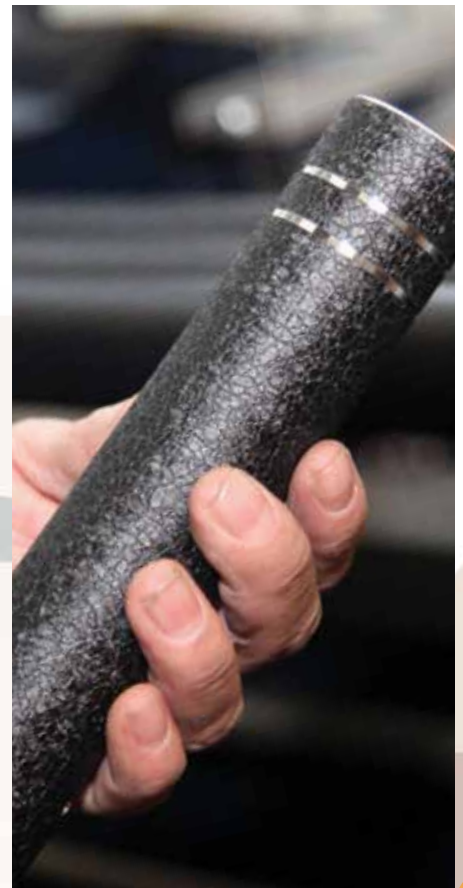
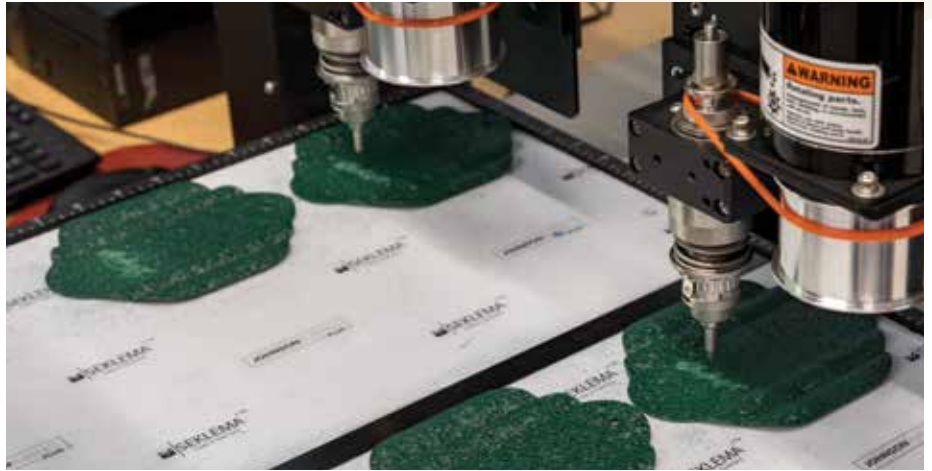
59"

1.75"

2"

32"

34.25"



800-345-2530

Mon-Fri 8:00am – 5:00pm ET

service@windriverchimes.com

# Arabesque® Displays

## Case Pack

ABCP1

| Item      | QTY |
|-----------|-----|
| 32" AR206 | 6   |
| 36" AR306 | 8   |
| 44" AR406 | 6   |
| 50" AR516 | 3   |

The Arabesque® case pack includes our most popular sizes in assorted colors for the fastest possible delivery time, and is the quickest way to restock your store.

## Single

Assortments

| Length / SKU   | AB1 | AB1RFL |
|----------------|-----|--------|
| 32" - AR206    | 5   | 5      |
| 36" - AR306    | 5   | 5      |
| 44" - AR406    | 3*  | 3      |
| 50" - AR516    | 2   | 2      |
| 57" - AR626    | 1   | 1      |
| SINGLE DISPLAY | 1   | -      |

\* Includes one AR406 chime free of charge as a display offset.

The Single displays 12 Arabesque® wind chimes in a compact 18"x18"x69" space.



## Point-of-Sale Displays

Highlight a chime near your checkout, on a shelf, or in a window display with one of our POS displays.

**Chapel:** Holds 1 chime up to 36" long



CHAPEL-OAK  
CHAPEL-CDR

**Large Chapel:** Holds 1 chime up to 44" long



LCHAPEL-OAK  
LCHAPEL-CDR

**Table top:** Holds 1 chime up to 27" long



TABLETOP-OAK  
TABLETOP-CDR

**Quartet:** Holds 4 chimes up to 27" long



QUARTET-OAK  
QUARTET-CDR

## Tower

Assortments

| Length / SKU  | AB2 | AB2RFL |
|---------------|-----|--------|
| 32" - AR206   | 6*  | 6      |
| 36" - AR306   | 5   | 5      |
| 44" - AR406   | 3   | 3      |
| 50" - AR516   | 3   | 3      |
| 57" - AR626   | 1   | 1      |
| 59" - AR736   | 1   | 1      |
| TOWER DISPLAY | 1   | -      |

\* Includes two AR206 free of charge as display offsets.

The Tower displays 19 Arabesque® wind chimes and measures 29"x20"x83".





## Triple

### Assortments

| Length / SKU   | AB3 | AB3RFL |
|----------------|-----|--------|
| 32" - AR206    | 8   | 8      |
| 36" - AR306    | 6*  | 6      |
| 44" - AR406    | 3   | 3      |
| 50" - AR516    | 3   | 3      |
| 57" - AR626    | 2   | 2      |
| 59" - AR736    | 2   | 2      |
| TRIPLE DISPLAY | 1   | -      |

\* Includes two AR306 free of charge as display offsets.

The Triple displays 23 Arabesque® wind chimes and measures 53"x20"x84".



## Windmill

### Assortments

| Length / SKU     | ABWM | ABWMRFL |
|------------------|------|---------|
| 32" - AR206      | 12   | 12      |
| 36" - AR306      | 12   | 12      |
| 44" - AR406      | 8*   | 8       |
| 50" - AR516      | 8    | 8       |
| WINDMILL DISPLAY | 1    | -       |

\* Includes one AR406 free of charge as a display offset.

The Windmill displays 18 Arabesque® wind chimes and measures 28"x28"x83".

## Windmill XL

### Assortments

| Length / SKU        | ABWMXL | ABWMXLRFL |
|---------------------|--------|-----------|
| 32" - AR206         | 12     | 12        |
| 36" - AR306         | 12     | 12        |
| 44" - AR406         | 8      | 8         |
| 50" - AR516         | 8*     | 8         |
| 57" - AR626         | 2      | 2         |
| 59" - AR736         | 2      | 2         |
| WINDMILL XL DISPLAY | 1      | -         |

\* Includes one AR516 free of charge as a display offset.

The Windmill XL displays 20 Arabesque® wind chimes and measures 40"x32"x82".

# Corinthian Bells®

Our best-selling chimes, Corinthian Bells® bring our excellent quality wind chimes to your home with the endurance and durability our customers know and love. We created Corinthian Bells® to be the best, and our customers know it – which is why they choose Corinthian Bells® time and time again over other brands on the market.

These chimes are eye-catching and beautiful to listen to, with hand-tuned tubes producing gentle harmonies.

5 Year Warranty

**best  
SELLING  
brand**



Listen to this chime

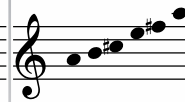
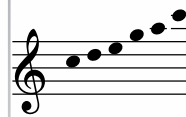
### Available Colors

-  Patina Green (PG)
-  Midnight Blue (MB)
-  Ruby Splash® (RS)
-  Black (BL)
-  Green (GN)
-  Copper Vein (CV)
-  Plum (PM)
-  Silver Vein (SV)
-  Sky Blue (SK)

T106

T206

T306



Scale

C

A

E

Colors



Overall Length

27"

30"

36"

Tube Diameter

0.75"

0.875"

1"

Longest Tube

12.5"










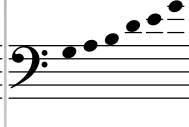
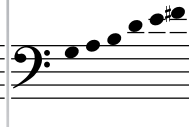
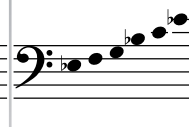
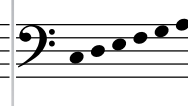








15"

18.5"



# Corinthian BELLS®

BY WIND RIVER®

| T406  | T516  | T626  | T736  | T836   | T446  | T936  |
|---|---|---|---|--|---|---|
|    |    |   |   |   |   |   |
|  |  |  |  |  |  |  |
| C   | A   | G   | G7  | E <sup>b</sup>   | C   | B Lydian  |
|  |  |  |  |  |  |  |
| 44"   | 50"   | 56"   | 60"   | 65"  | 74"   | 78"   |
| 1.25"   | 1.5"  | 1.75"   | 2"  | 2.25"  | 1.25"   | 2.5"  |
| 23"   | 27.75"  | 32"   | 34.25"  | 40.25"   | 53.5"   | 47.75"  |

## Gift Box



Each Corinthian Bells® comes in an attractive gift box.





# Corinthian Bells® Displays

## Case Pack

CBCP1

| Item     | QTY |
|----------|-----|
| 27" T106 | 6   |
| 30" T206 | 8   |
| 36" T306 | 6   |
| 44" T406 | 3   |
| 50" T516 | 3   |

The Corinthian Bells® case pack includes our most popular sizes in assorted colors for the fastest possible delivery time, and is the quickest way to restock your store.

## Single

Assortments

| Length / SKU   | CB1 | CB1RFL |
|----------------|-----|--------|
| 27" - T106     | 4   | 4      |
| 30" - T206     | 4   | 4      |
| 36" - T306     | 2   | 2      |
| 44" - T406     | 2*  | 2      |
| 50" - T516     | 2   | 2      |
| 56" - T626     | 1   | 1      |
| SINGLE DISPLAY | 1   | -      |



\* Includes one T406 chime free of charge as a display offset.

The Single displays 12 Corinthian Bells® chimes and measures 18"x18"x69".

## Tower

Assortments

| Length / SKU  | CB2A | CB2B | CB2C | CB2RFL |
|---------------|------|------|------|--------|
| 27" - T106    | 4    | 4    | 4    | 4      |
| 30" - T206    | 4    | 4    | 4    | 4      |
| 36" - T306    | 4*   | 4*   | 4*   | 4      |
| 44" - T406    | 3    | 3    | 3    | 3      |
| 50" - T516    | 3    | 3    | 3    | 3      |
| 56" - T626    | 1    | 1    | 1    | 1      |
| 60" - T736    | -    | 1    | 1    | -      |
| 65" - T836    | -    | -    | 1    | -      |
| TOWER DISPLAY | 1    | 1    | 1    | -      |



\* Includes two T306 chimes free of charge as display offsets.

The Tower displays 19 wind chimes and measures 29"x20"x83".  
The Tower display will accommodate all Corinthian Bells® sizes.

## Windmill

Assortments

| Length / SKU     | CBWM | CBWMRFL |
|------------------|------|---------|
| 27" - T106       | 12   | 12      |
| 30" - T206       | 12   | 12      |
| 36" - T306       | 12*  | 12      |
| 44" - T406       | 12   | 12      |
| WINDMILL DISPLAY | 1    | -       |

\* Includes two T306 free of charge as display offsets.

The Windmill displays 18 Corinthian Bells® chimes and measures 28"x28"x83".



# Corinthian BELLS®

BY WIND RIVER®

## Triple

### Assortments

| Length / SKU   | CB3A | CB3B | CB3C | CB3RFL |
|----------------|------|------|------|--------|
| 27" - T106     | 4    | 4    | 4    | 4      |
| 30" - T206     | 4    | 4    | 4    | 5      |
| 36" - T306     | 5*   | 5*   | 5*   | 5      |
| 44" - T406     | 4*   | 4*   | 4*   | 4      |
| 50" - T516     | 3    | 3    | 3    | 3      |
| 56" - T626     | 2    | 2    | 2    | 2      |
| 60" - T736     | 1    | 1    | 1    | 1      |
| 65" - T836     | –    | 1    | 1    | –      |
| 78" - T936     | –    | –    | 1    | –      |
| 74" - T446     | 1    | 1    | 1    | –      |
| TRIPLE DISPLAY | 1    | 1    | 1    | –      |

\* Includes one T306 and one T406 free of charge as display offsets.  
The Triple displays 23 chimes and measures 53"x20"x84".



## Eclipse Chimes



Stellar and sublime, our Lydian chimes are the soundtrack of the Eclipse. Created to celebrate this once-in-a-generation event, this collection of uniquely-tuned chimes capture the ethereal sounds that match the mystery and wonder of a solar eclipse, and of outer space.



## Windmill XL

### Assortments

| Length / SKU        | CBWMXL | CBWMXLRFL |
|---------------------|--------|-----------|
| 27" - T106          | 12     | 12        |
| 30" - T206          | 12     | 12        |
| 36" - T306          | 12     | 12        |
| 44" - T406          | 12     | 12        |
| 50" - T516          | 4*     | 4         |
| 56" - T626          | 4      | 4         |
| 60" - T736          | 2      | 2         |
| WINDMILL XL DISPLAY | 1      | –         |

\* Includes one T516 free of charge as a display offset.

The Windmill XL displays 20 Corinthian Bells® chimes and measures 40"x32"x82".

ECL-T206



ECL-T516



ECL-T936



A Lydian



A Lydian



A Lydian

# Corinthian Bells® Harmonies

Choose from a curated selection of engraved chimes to offer themed gifts that are timely and personal. Add a few of your favorites alongside our original Corinthian Bells or choose one of our themed case packs to fill your display for the season. All designs are available in our 27" T106 and 36" T306 sizes of Corinthian Bells, in select colors.

5 Year Warranty

## Memorial Chime Collection

- IHY** I Hear You in the Wind  
Black, Sky Blue
- TWL** Those We Love Don't Go Away™  
Black, Sky Blue
- P23** The Lord is My Shepherd...  
Green, Sky Blue
- FHL** Faith Hope, & Love  
Black, Copper Vein, Sky Blue
- CP12-MEM**  
One dozen 27" Chimes
- CP18-MEM**  
One dozen 27" Chimes & six 36" chimes



## "Love is..." Collection

- LIP** Love is Patient  
Black, Ruby Splash, Sky Blue
- FHL** Faith Hope & Love  
Black, Copper Vein, Sky Blue
- MTR** Irish Blessing  
Copper Vein, Green
- CP12-LOV**  
One dozen 27" chimes
- CP18-LOV**  
One dozen 27" and six 36" chimes



## Mom's Love Collection

- FBF** First Best Frever Friend  
Ruby Splash, Sky Blue
- LWM** Live with Mother  
Ruby Splash, Sky Blue
- MLV** A Mother's Love  
Ruby Splash, Sky Blue
- CP12-MOM**  
One dozen 27" chimes
- CP18-MOM**  
One dozen 27" and six 36" chimes





## Pet Memorial Collection

- ALC** Always Loved, Never forgotten – Cat  
Black, Copper Vein
- ALD** Always Loved, Never forgotten – Dog  
Black, Copper Vein
- ALP** Always Loved, Never forgotten – Pawprint  
Black, Copper Vein
- FHC** Forever in My Heart – Cat  
Black, Copper Vein
- FHD** Forever in My Heart – Dog  
Black, Copper Vein
- FHP** Forever in My Heart – Pawprint  
Black, Copper Vein

**CP12-PET**  
One dozen 27" chimes

**CP18-PET**  
One dozen 27" and six 36" chimes



## Beach Collection

- BHP** The Beach is My Happy Place  
Copper Vein, Sky Blue
- HIW** Happiness comes in Waves  
Copper Vein, Sky Blue
- SWH** Salt Water Heals  
Copper Vein, Sky Blue

**CP12-BCH**  
One dozen 27" chimes

**CP18-BCH**  
One dozen 27" and six 36" chimes



## Custom Laser Engraving

Laser engraved wind chimes make great souvenirs and allow your chimes to be customized for added interest. Engrave your chimes with your store logo, an inspirational verse, or a destination to offer your customers a unique keepsake.



Laser engraving requires a minimum order of fifteen chimes. Contact our customer service team for setup and engraving fees.

- 1** Contact our Customer Service Center to start the setup process.\* Send your text or logo design to [service@windriverchimes.com](mailto:service@windriverchimes.com).
- 2** We'll provide an electronic proof for your approval. Once approved, you're ready to order.
- 3** Order your engraved chimes by requesting the engraved option when you order your chimes.

\*The setup process may take 3-5 days.

# Shenandoah Melodies®

Wind River® is located near the Shenandoah Valley of Virginia, and our inspiration for these chimes comes from its gorgeous natural beauty. Imagine floating down a river every time you hear its calming music!

Shenandoah Melodies® are available in 4 colors inspired by the Shenandoah. The durable powder coated finish on these chimes makes them weather-resistant and perfect for any climate. And better yet, these chimes provide the quality you have come to know and love at a lower price.

3 Year Warranty



Listen to this chime

|                         | S1105  | S1205          | S1305 | S1405 |
|-------------------------|--|----------------|-------|-------|
| <b>Available Colors</b> |  |                |       |       |
| <b>Key Features</b>     | <ul style="list-style-type: none"> <li>• Durable powder coated finish</li> <li>• Graceful dome profile</li> <li>• Weather resistant</li> </ul> |                |       |       |
|                         |  |                |       |       |
| Scale                   | C  | E <sup>b</sup> | G     | D     |
| Colors                  |  |                |       |       |
| Overall Length          | 26"  | 29"            | 35"   | 42"   |
| Tube Diameter           | 0.75"  | 0.875"         | 1"    | 1.25" |
| Longest Tube            | 12.5"  | 14"            | 18.5" | 22"   |



Gift Box



All Shenandoah Melodies® ship in an attractive gift box.

# Shenandoah Melodies®

BY WIND RIVER®

S1515

S1725

S1825



B



47"

1.5"

26.25"

G



59"

2"

34"

F#



64"

2.25"

37.25"



## Single

### Assortments

| Length / SKU   | SM1 | SM1RFL |
|----------------|-----|--------|
| 26" - S1105    | 2   | 2      |
| 29" - S1205    | 2*  | 2      |
| 35" - S1305    | 3   | 3      |
| 42" - S1405    | 2   | 2      |
| 47" - S1515    | 2   | 2      |
| SINGLE DISPLAY | 1   | -      |

\* Includes two S1205 chimes free of charge as display offsets.

The Single displays up to 12 Shenandoah Melodies® chimes and measures 18"x18"x69".



Shenandoah Melodies® displays are constructed from sturdy oak, and stained to coordinate with the strikers on our chimes. Each is screen printed with the Wind River® logo and "Made in the USA".

## Tower

### Assortments

| Length / SKU  | SM2A | SM2B | SM2RFL |
|---------------|------|------|--------|
| 26" - S1105   | 2    | 2    | 2      |
| 29" - S1205   | 4    | 4    | 4      |
| 35" - S1305   | 4*   | 4*   | 4      |
| 42" - S1405   | 2*   | 2*   | 2      |
| 47" - S1515   | 2    | 2    | 2      |
| 59" - S1725   | 1    | 1    | 1      |
| 64" - S1825   | -    | 1    | -      |
| TOWER DISPLAY | 1    | 1    | -      |

\* Includes one S1305 and one S1405 chime free of charge as display offsets.

The Tower displays 19 Shenandoah Melodies® wind chimes and measures 29"x20"x83".





# Shenandoah Melodies® Displays

## Triple

### Assortments

| Length / SKU   | SM3A | SM3B | SM3RFL |
|----------------|------|------|--------|
| 26" - S1105    | 5    | 5    | 5      |
| 29" - S1205    | 5*   | 5*   | 5      |
| 35" - S1305    | 5    | 5    | 5      |
| 42" - S1405    | 4    | 4    | 4      |
| 47" - S1515    | 3    | 3    | 3      |
| 59" - S1725    | 2    | 2    | 2      |
| 64" - S1825    | –    | 1    | –      |
| TRIPLE DISPLAY | 1    | 1    | –      |

\* Includes three S1205 chimes free of charge as display offsets.

The Triple displays 23 Shenandoah Melodies® chimes and measures 53"x20"x84".



## Windmill

### Assortments

| Length / SKU     | SMWM | SMWMRFL |
|------------------|------|---------|
| 26" - S1105      | 12   | 12      |
| 29" - S1205      | 12   | 12      |
| 35" - S1305      | 12*  | 12      |
| 42" - S1405      | 12   | 12      |
| WINDMILL DISPLAY | 1    | –       |

\* Includes two S1305 chimes free of charge as display offsets.

The Windmill displays 18 chimes and measures 28"x28"x83".



## Windmill XL

### Assortments

| Length / SKU       | SMWMXL | SMWMXLRFL |
|--------------------|--------|-----------|
| 26" - S1105        | 12     | 12        |
| 29" - S1205        | 12     | 12        |
| 35" - S1305        | 12*    | 12        |
| 42" - S1405        | 12     | 12        |
| 47" - S1515        | 4      | 4         |
| 59" - S1725        | 4      | 4         |
| 64" - S1825        | 2      | 2         |
| WINDMILLXL DISPLAY | 1      | –         |

\* Includes three S1305 chimes free of charge as display offsets.

The Windmill XL displays 20 Shenandoah Melodies® chimes and measures 40"x32"x82".

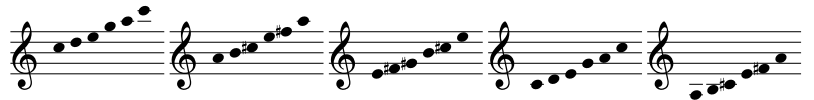
# Licensed & Specialty Chimes

Capture the rich heritage of American railways in a unique way with the Amtrak wind chime. Precisely hand-tuned in the USA to the same notes as the iconic K5LA horns of Amtrak locomotives. Officially licensed by Amtrak.

*Amtrak is a registered service of the National Railroad Passenger Corporation, used under license.*



As members and supporters of Rotary International®, we are proud to share 10% of our gross sales of Rotary windchimes to Rotary International®. The wind sail is engraved with the Rotary International® Masterbrand Signature logo.



|                |     |     |     |     |     |     |
|----------------|-----|-----|-----|-----|-----|-----|
| Scale          | B6  | C   | A   | E   | C   | A   |
| Overall Length | 42" | 27" | 30" | 36" | 44" | 50" |

# Meditation Chimes

Find a moment to breathe, relax and reset with a Wind River® meditation chime. The soothing tones of Wind River® chimes are now available indoors - no matter where you live or what today's weather brings. Strike a note to pause, regroup and appreciate life, one moment and at a time.

Wind River® meditation chimes are available in two introductory sizes, tuned to match the longest and shortest tubes of our popular Corinthian Bells 50" wind chime.



## Small Meditation Chime

Tube Length: 19.25"  
Tube Diameter: 1.5"  
Note: A4



## Large Meditation Chime

Tube Length: 27.75"  
Tube Diameter: 1.5"  
Note: A3

# Festival®

These festive chimes will soothe you with their sweet melody. The hand-tuned aluminum tubes compose beautiful music, and the North American redwood striker and dome accentuate its rustic appearance.

These chimes are weather-resistant for any environment! Our Festival® chimes are built to last in your family for years to come.

2 Year Warranty

## Quartet

Assortments

| LENGTH / SKU | FQRT | FQTRFL |
|--------------|------|--------|
| 18" - F336   | 5    | 5      |
| 24" - F416   | 3*   | 3      |
| 24" - F418   | 2    | 2      |
| QUARTET      | 1    | -      |

\* Includes two F416 free of charge as display offsets.



Listen to this chime

### Available Colors

-  Bronze (C)
-  Silver (S)
-  Forest Green (FG)
-  Black (BL)



F336      F416      F418      F635      F636



|                |      |        |        |                |                |
|----------------|------|--------|--------|----------------|----------------|
| Scale          | G    | D      | D      | B <sup>b</sup> | B <sup>b</sup> |
| Colors         |      |        |        |                |                |
| Overall Length | 18"  | 24"    | 24"    | 28"            | 30"            |
| Tube Diameter  | 0.5" | 0.625" | 0.625" | 0.875"         | 0.875"         |
| Longest Tube   | 8.5" | 11"    | 11"    | 14"            | 14.75"         |



## Gift Box

Festival® chimes are shipped in an attractive gift box.





| F716  | F916  | F735  |
|---|---|---|
|    |   |   |
|  |  |  |
| D   | C   | E   |
|  |  |  |
| 36"   | 42"   | 60"   |
| 1"  | 1.25"   | 1"  |
| 20"   | 23.25"  | 46"   |



## Single

| Length / SKU   | Assortments |         |
|----------------|-------------|---------|
|                | FST1        | FST1RFL |
| 18" - F336     | 4           | 4       |
| 24" - F416     | 3           | 3       |
| 24" - F418     | 2           | 2       |
| 28" - F635     | 2*          | 2       |
| 30" - F636     | 2           | 2       |
| 36" - F716     | 2           | 2       |
| 42" - F916     | 1           | 1       |
| 60" - F735     | 1           | 1       |
| SINGLE DISPLAY | 1           | -       |



\* Includes two F635 chimes free of charge as display offsets.

The Single displays 12 Festival® chimes and measures 18"x18"x69".

## Case Pack

| FCP1     |     |
|----------|-----|
| Item     | QTY |
| 18" F336 | 7   |
| 24" F416 | 8   |
| 24" F418 | 6   |
| 28" F635 | 6   |

## Arbor



\* Includes one F716 and one F735 chime free of charge as display offsets.

The Arbor displays up to 27 chimes and measures 27" x 20" x 83"

| Length / SKU  | Assortments |           |
|---------------|-------------|-----------|
|               | FSTARB      | FSTARBRFL |
| 18" - F336    | 6           | 6         |
| 24" - F416    | 3           | 3         |
| 24" - F418    | 2           | 2         |
| 28" - F635    | 3           | 3         |
| 30" - F636    | 4           | 4         |
| 36" - F716    | 4*          | 4         |
| 42" - F916    | 1           | 1         |
| 60" - F735    | 1*          | 1         |
| ARBOR DISPLAY | 1           | -         |

## Windmill

| Length / SKU     | Assortments |          |
|------------------|-------------|----------|
|                  | FSTWM       | FSTWMRFL |
| 18" - F336       | 8           | 8        |
| 24" - F416       | 6           | 6        |
| 24" - F418       | 6           | 6        |
| 28" - F635       | 6           | 6        |
| 30" - F636       | 6*          | 6        |
| 36" - F716       | 4           | 4        |
| 42" - F916       | 4           | 4        |
| 60" - F735       | 4           | 4        |
| WINDMILL DISPLAY | 1           | -        |

\* Includes three F636 chimes free of charge as display offsets.

The Windmill displays 18 Festival® chimes and measures 28"x28"x83".



# Arias®

Our original brand that has been popular for over 25 years! Arias® is a basic wind chime that is built with the same high-standards of excellence and quality, but at a more affordable price.

Like all of our wind chimes, all of the components of our Arias® chimes are made in the USA – unlike most other chimes on the market. Made of weather-resistant American redwood and hand-tuned aluminum tubes, our Arias wind chimes are both visually stunning and long-lasting!

2 Year Warranty

### Available Colors

 Satin Silver (S)

### Key Features

- Our original line of chimes
- Affordable price point
- Excellent sound quality
- Classic, rustic design

P52

M41

M62

M63

M65

M66



Scale

C

B<sup>b</sup>

B<sup>b</sup>

D

G

E

Colors



Overall Length

17"

27"

29"

34"

44"

58"

Tube Diameter

0.5"

0.875"

0.875"

1"

1"

1"

Longest Tube

7.75"

12.75"

14.75"

20"

28"

43.75"



Listen to this chime



## Gift Box

All Arias® chimes arrive in an attractive gift box.





## Single

| Length / SKU   | Assortments |       |
|----------------|-------------|-------|
|                | A1          | A1RFL |
| 17" - P52      | 3           | 3     |
| 27" - M41      | 3           | 3     |
| 29" - M62      | 4           | 4     |
| 34" - M63      | 4*          | 4     |
| 44" - M65      | 1*          | 1     |
| 58" - M66      | 2           | 2     |
| SINGLE DISPLAY | 1           | -     |

\* Includes one M63 and one M65 chime free of charge as display offsets.

The Single displays 12 Festival® chimes and measures 18"x18"x69".

## Quartet

| LENGTH / SKU    | Assortments |        |
|-----------------|-------------|--------|
|                 | AQRT        | AQTRFL |
| 17" - P52       | 5**         | 5      |
| 27" - M41       | 5           | 5      |
| QUARTET DISPLAY | 1           | -      |

\*\* Includes three P52 chimes free of charge as display offsets.



## Arbor

| Length / SKU  | Assortments |        |
|---------------|-------------|--------|
|               | AARB        | AARBFL |
| 17" - P52     | 5           | 5      |
| 27" - M41     | 4           | 4      |
| 29" - M62     | 4*          | 4      |
| 34" - M63     | 4*          | 4      |
| 44" - M65     | 2           | 2      |
| 58" - M66     | 2           | 2      |
| ARBOR DISPLAY | 1           | -      |

\* Includes two M62 and two M63 chimes free of charge as display offsets.

The Arbor displays up to 27 chimes and measures 27"x20"x83".





# In Loving Memory®

In times of grief, these wind chimes can provide a lasting memory of those we have loved and lost. In Loving Memory® wind chimes provide a sentimental and personal touch for family and friends who are mourning the loss of a loved one.

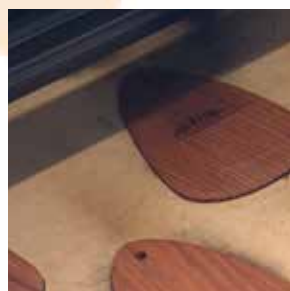
These chimes are designed to be displayed at florists, funeral homes, and stores in the sympathy market. Chapel and Table Top fixtures support both the wind chime and flowers during funerals and memorial services.

2 Year Warranty



Listen to this chime

|                         | L336 | L418   | L206   | L306  | L406   |
|-------------------------|------|--------|--------|-------|--------|
| <b>Available Colors</b> |      |        |        |       |        |
|                         |      |        |        |       |        |
|                         |      |        |        |       |        |
| Scale                   | G    | D      | A      | E     | C      |
| Colors                  |      |        |        |       |        |
| Overall Length          | 18"  | 24"    | 30"    | 35"   | 42"    |
| Tube Diameter           | 0.5" | 0.625" | 0.875" | 1"    | 1.25"  |
| Longest Tube            | 8.5" | 11"    | 15"    | 18.5" | 23.25" |



**Gift Box**



Each In Loving Memory® chime comes in an attractive box.

## Single

| Length / SKU   | Assortments |         |
|----------------|-------------|---------|
|                | ILM1        | ILM1RFL |
| 18" - L336     | 5*          | 5       |
| 24" - L418     | 5           | 5       |
| 30" - L206     | 3*          | 3       |
| 35" - L306     | 2           | 2       |
| 42" - L406     | 1           | 1       |
| CHAPEL         | 1           | —       |
| SINGLE DISPLAY | 1           | —       |

\* Includes two L336 and one L206 chime free of charge as display offsets.

The Single displays 12 chimes and measures 18"x18"x69".



## In Loving Memory<sup>®</sup> Engraving

### Standard Phrases

- #1 - "What we have once enjoyed we can never lose ..."  
Helen Keller
- #2 - "The Lord is my Shepherd ..."  
Psalm 23:1
- #3 - "The Lord bless you and keep you ... and give you peace"  
Numbers 6:24-26
- #4 - "I am with you always, until the end of the age"  
Matthew 28:20
- #7 - "Those we love don't go away; they walk beside us every day..."

Phrases 5, 6, 8 & 9 discontinued as of August 1, 2024.

**Table top:**  
Holds one chime up to 27" long.  
Chimes sold separately.



**Chapel:**  
Holds one chime up to 36" long.  
Chimes sold separately, flowers not included.



**Chapel XL:**  
Holds one chime up to 44" long.  
Chimes sold separately, flowers not included.

## Arbor

| Length / SKU  | Assortments |          |
|---------------|-------------|----------|
|               | ILMARB      | ILMARBFL |
| 18" - L336    | 8           | 8        |
| 24" - L418    | 6           | 6        |
| 30" - L206    | 4           | 4        |
| 35" - L306    | 4*          | 4        |
| 42" - L406    | 2           | 2        |
| CHAPEL        | 1           | —        |
| ARBOR DISPLAY | 1           | —        |

\* Includes two L306 chimes free of charge as display offsets.

The Arbor displays up to 27 chimes and measures 27"x20"x83".



CRAFTED IN VIRGINIA  
**Wind River**<sup>®</sup>  
ESTABLISHED 1986

# For the Girls®



for the *Girls*®

BY WIND RIVER®

These wind chimes were created by Wind River's Patty Baisden after her own mother's battle with breast cancer. We donate 20% of the wholesale price to breast cancer charities.

Patty hopes that the soothing resonance of their music may bring hope and encouragement to all those fighting the battle, and provide a victory song for the survivors!

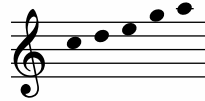


**Listen to this chime**

3 Year Warranty

Scale

1105



C

Overall Length

25"

Tube Diameter

0.75"

Longest Tube

12.5"

1305



E

Overall Length

34"

Tube Diameter

1"

Longest Tube

17.5"

## For the Girls® Table Display

|                   |   |
|-------------------|---|
| 25" - FTG1105     | 3 |
| 34" - FTG1305     | 3 |
| FTG TABLE DISPLAY | 1 |



**Gift Box**

Each For the Girls® wind chime ships in an attractive box for easy gifting.

## Tree Hooks










Made from quarter inch stainless steel, these heavy-duty hooks easily support our largest chimes. Available in four sizes, the longer hooks feature extra wide tops to reach around thicker limbs. Powder coated with a classic black finish for years of outdoor use.

All Tree Hooks and Shepherd Hooks are sold in sets of five.





# Mountain View®

|   |  |  |  |
|---|--|--|--|
| BF-01<br><br>Small Feeder<br>9.5"x8"x9.5"          | BF-01B<br><br>Small Feeder<br>w/ Bird<br>9.5"x8"x9.5" | BF-12<br><br>Feeder<br>10"x8"x9.5"    | BF-12B<br><br>Feeder w/ Bird<br>10"x8"x9.5"  |
| BF-23<br><br>Medium Feeder<br>12"x8.5"x10.75"      | BF-34<br><br>Large Feeder<br>14"x11"x11.5"            | BH-10<br><br>Wren House<br>6.5"x8"x8" | BH-21<br><br>Bluebird House<br>7.5"x10"x9.5" |
| BH-32<br><br>Flycatcher<br>House<br>8.5"x11"x10" |  |  |  |

These redwood products provide a natural and rustic decoration for your yard, while also providing shelter and sustenance to birds. Each birdhouse has a removable roof to make it easy to clean, and comes with a pre-drilled mounting block and pair of screws for easy assembly.

These naturally decay-resistant pieces are functional and elegant at the same time.

The birds in your neighborhood will love their own Wind River bird feeders and houses!

## Westbrook Display

### Assortments

| SKU               | WSTB | WSTBRFL |
|-------------------|------|---------|
| BH-10             | 3    | 3       |
| BH-21             | 3    | 3       |
| BH-32             | 1    | 1       |
| BF-01             | 2    | 2       |
| BF-01B            | 1    | 1       |
| BF-12             | 2*   | 2       |
| BF-12B            | 1    | 1       |
| BF-23             | 2*   | 2       |
| BF-34             | 1    | 1       |
| WESTBROOK DISPLAY | 1    | —       |

\* Includes one BF-12 and two BF-23 feeders free of charge as display offsets.

The Westbrook displays 6 bird houses and 6 bird feeders and measures 16" x 21" x 69".

### Etching Options

The BF-01 and BF-12 bird feeders are available with plain acrylic glass or an optional etched bird.



# Wind River®

2024-25  
CATALOG



PO Box 823  
Manassas Park, Virginia 20113  
T: 800-345-2530 | F: 800-345-2521  
service@windriverchimes.com

[www.windriverchimes.com](http://www.windriverchimes.com)



Watch our  
video to  
learn about  
Wind River®  
Chimes!