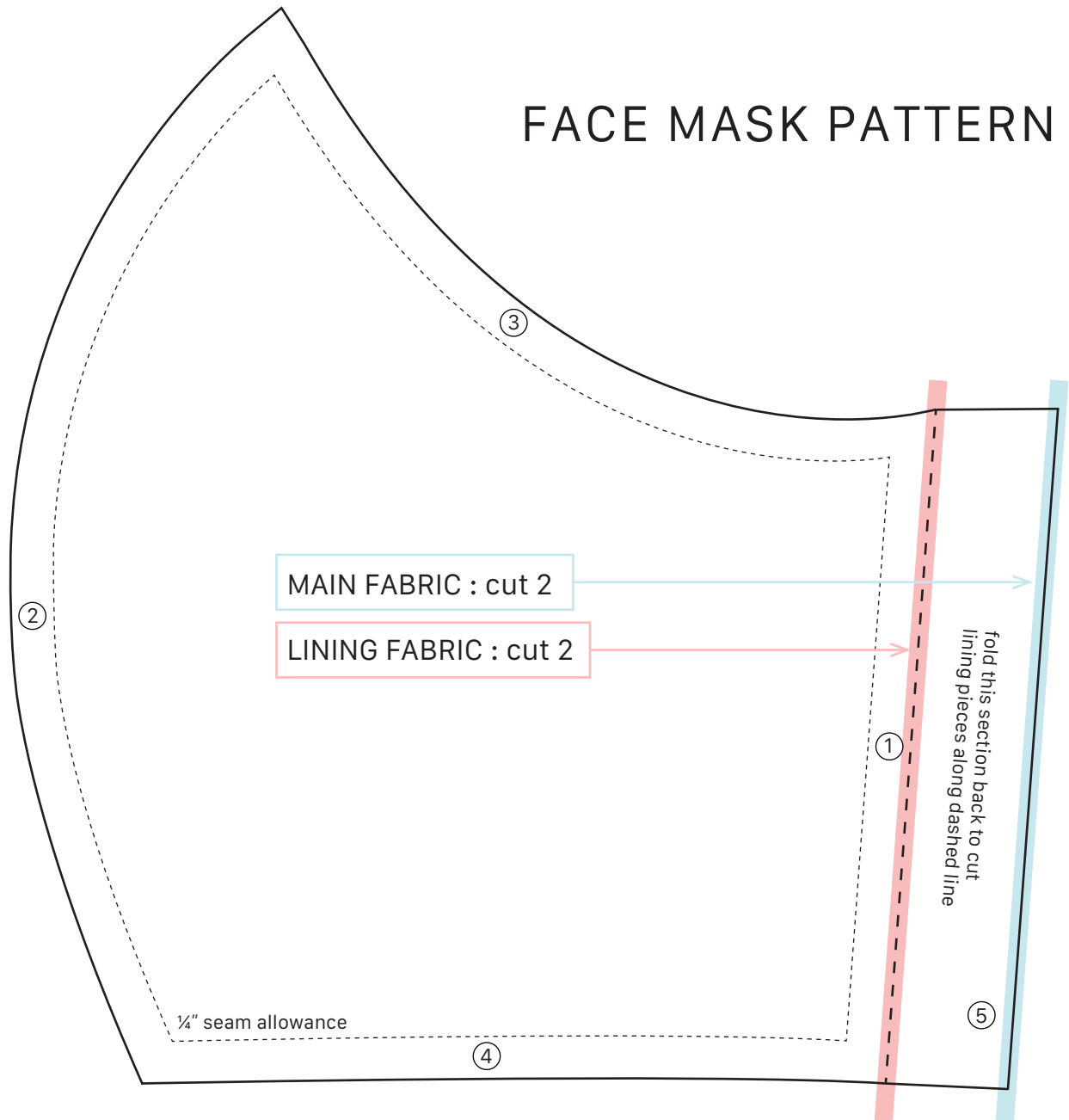


FACE MASK PATTERN



— this line is 3" — use it to check the scale of the printed pattern

MATERIALS —

- main fabric - at least 8" x 12"
- lining fabric - at least 8" x 12"
- 26" elastic cord or 1/8" wide elastic band

FABRIC NOTES —

- jersey (not super thin weight) allows for a versatile fit and minimal finishing of seams (which means quicker production!)
- if using a woven cotton fabric with any pattern, orient it horizontally.
- masks will be washed and sterilized, so laundering or drying fabric beforehand will prevent shrinkage.

Email sales@statethelabel.com if you have any questions! Happy sewing :)

STATE