

il-dental | Innovative
Dental Products

European brand presented through the world



Millions filled teeth every year!

“WE PRODUCE AND EXPORT TO MORE THAN 80 COUNTRIES”

COMPOSITES	TEMPORARY MATERIALS	CONTENTS
LINERS	ETCHANTS	TOOTH WHITENING
ADHESIVES	PROPHY MATERIALS	LIQUID COFFERDAM
SEALANTS	TOOTH PASTE	ISOLATING SOLUTIONS
GLASS IONOMER CEMENTS	RETRACTION MATERIALS	PLASTERS
OTHER CEMENTS	IMPRESSION MATERIALS	INVESTMENTS AND POLISHING MATERIALS
ROOT CANAL MATERIALS	MISCELLANEOUS	



PACKAGING

REF	CONTENTS
ILCA1	4g syringe dentin shade A1
ILCA2	4g syringe dentin shade A2
ILCA3	4g syringe dentin shade A3
ILCA5	4g syringe dentin shade A3.5
ILCB2	4g syringe dentin shade B2
ILCC2	4g syringe dentin shade C2
ILCO2	4g syringe dentin shade OA2
ILCO3	4g syringe dentin shade OA3
ILCEU	4g syringe enamel shade Universal
ILCK2	4x4g syringes (A1, A2, A3, A3.5)*, 5ml adhesive, 5ml etching gel, consumables
ILCK1	8x4g syringes (A1, A2, A3, A3.5, B2, C2, OA2, OA3)*, 5ml adhesive, 4,3g etching gel, consumables
ILCK2SE	4x4g syringes (A1, A2, A3, A3.5)*, 5ml adhesive, 5ml self etching gel, consumables
ILCK1SE	8x4g syringes (A1, A2, A3, A3.5, B2, C2, OA2, OA3)*, 5ml adhesive, 4,3g self etching gel, consumables

*Other shades under request



i-LIGHT^N CAPSULES

REF	CONTENTS
ILAA1	20x0,25g capsules dentin shade A1
ILAA2	20x0,25g capsules dentin shade A2
ILAA3	20x0,25g capsules dentin shade A3
ILAA5	20x0,25g capsules dentin shade A3.5
ILAB1	20x0,25g capsules dentin shade B1
ILAB2	20x0,25g capsules dentin shade B2
ILAB3	20x0,25g capsules dentin shade B3
ILAC2	20x0,25g capsules dentin shade C2
ILAC3	20x0,25g capsules dentin shade C3
ILAD2	20x0,25g capsules dentin shade D2
ILAO2	20x0,25g capsules dentin shade O2
ILAO3	20x0,25g capsules dentin shade O3
ILAEU	20x0,25g capsules dentin shade Universal



INDICATIONS

- For direct restorations of class I, II, III, IV and V cavities
- For indirect restorations such as inlays, onlays and laminate veneers
- For extended fissure sealing in molars and premolars
- For cores

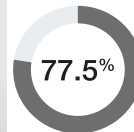
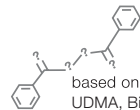


ADVANTAGES

- Extremely homogeneous and highly polishable
- High aesthetic and durable
- Lasting shades
- Highly resistant
- Easily handled
- Excellent biocompatibility
- Ultra small particle size
- Nano filler
- Radiopaque



zirconium and silica/barium glass filler:
main glass cluster size 0.25-1.5µm



inorganic filler
loading by weight



i-LIGHT^N Light Curing Nano Hybrid Composite

i-FLOW^N

Light Curing Nano Flowable Composite



PACKAGING

REF	CONTENTS
IFTA1	2g syringe A1, 3 tips
IFLA1	5g syringe A1, 5 tips
IFTA2	2g syringe A2, 3 tips
IFLA2	5g syringe A2, 5 tips
IFTA3	2g syringe A3, 3 tips
IFLA3	5g syringe A3, 5 tips
IFTA35	2g syringe A3.5, 3 tips
IFLA35	5g syringe A3.5, 5 tips
IFTK1	4x2g syringes (2xA2, 2xA3)*, 10 tips

*Other shades under request



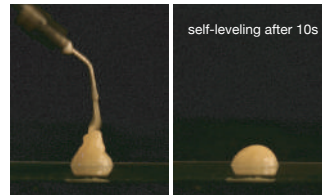
INDICATIONS

- For restorations of class III, IV and V cavities
- For root surface caries restorations
- For sealing pits and fissures
- For initial placement in class I and II cavities

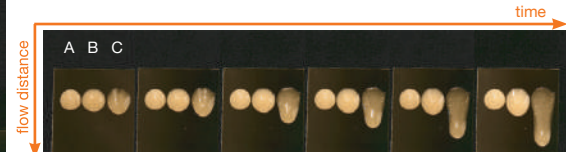


ADVANTAGES

- Excellent flow characteristics
- High aesthetics
- Highly resistant
- Highly polishable
- Low shrinkage
- Nano filler
- Radiopaque



i-FLOW^N has balanced viscosity. Flows smoothly and provides ideal self-leveling properties. At the same time not runny and stays neatly in place.



Fluidity of different flowable composites per 1 min
i-FLOW^N (A), competitors (B and C)



i-XCITE® CC^N

Chemical Curing Composite



PACKAGING

REF	CONTENTS
IXCCK	7g composite catalyst, 7g composite base, 3ml adhesive catalyst, 3ml adhesive base, 3ml etching liquid, 5 spatulas, 1 mixing pad
IXCCP	15g composite catalyst, 15g composite base, 3ml adhesive catalyst, 3ml adhesive base, 5ml etching liquid, 10 spatulas, 2 mixing pads



INDICATIONS

- For restoration of class III and V cavities
- For restoration of selected cavities of class IV
- For limited use in class I restorations in premolars



ADVANTAGES

- Radiopaque
- Universal shade
- Non sticky
- Highly resistant



i-LINER®

Light Curing Compomer Liner



PACKAGING

REF	CONTENTS
ILIKP	2,5g syringe 5 tips
ILIK1	4x2,5g syringes 20 tips



INDICATIONS

- For lining under polymer-based restorative materials, amalgams and porcelain restorations

i-LINER® could be used both as a usual liner (coating the floor of the cavity) and to coat the entire cavity (stress-breaking function).



ADVANTAGES

- Compensates filling shrinkage
- Prevents crack formations
- Minimizes micro fractures and secondary caries
- Has antibacterial properties
- Material contains glass ionomer, this guarantee double adhesion to dentine
- Radiopaque



ADHESIVES

i-BONDING[®] LC^N

Light Curing Adhesive



PACKAGING

REF	CONTENTS
IBLTP	5ml bottle 5 micro applicators cup for application



INDICATIONS

- Used to bond dentin and enamel to polymer based restorative materials, compomers, ceramic surfaces
- To improve retention of a restoration



ADVANTAGES

- Simple to use
- For universal application
- Good wetting properties



i-BONDING® SE Universal

Light Curing Self Etching Universal Adhesive



PACKAGING

REF	CONTENTS
IBSTP	5ml bottle 5 micro applicators cup for application



INDICATIONS

- To bond light or dual curing composites and compomers to tooth structure (dentin and enamel)
- To bond inlays, onlays, crowns, bridges, veneers in combination with a light or dual curing luting materials
- To improve retention of a restoration



ADVANTAGES

- Excellent adhesion to dentine and enamel
- Easy and fast application
- Universal for all light-curing restoratives



SEALANTS



i-SEAL[®] LC

Light Curing Pit And Fissure Sealant



PACKAGING

REF	CONTENTS
ISEKP	3,8g syringe 3 tips
ISEM1	4x1,2ml syringes 10 tips
ISEK1	4x3,8g syringes 12 tips



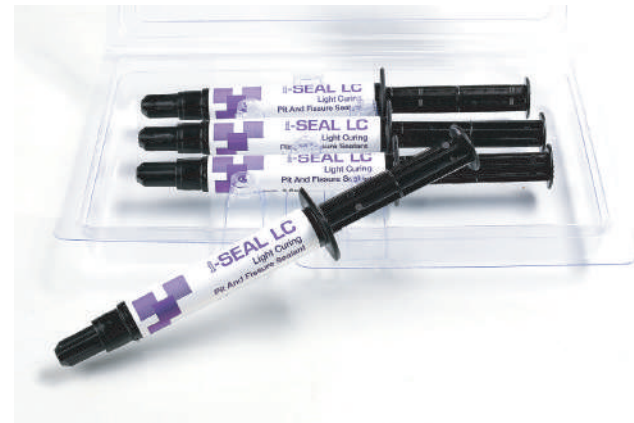
INDICATIONS

- For sealing small pits and fissures



ADVANTAGES

- Highly flowable to flow easily into pits and fissures
- Bonds to enamel
- Ideal for pediatric sealant applications



GLASS IONOMER CEMENTS

i-BAS[®]

Glass Ionomer Base Lining Cement



PACKAGING

REF	CONTENTS
IBATP	20g powder 10g liquid measuring scoop mixing pad



INDICATIONS

- For base linings and composite restorations



ADVANTAGES

- Fast-setting
- Radiopaque
- Excellent thermal expansion
- High strength and hardness



i-FIL®

Glass Ionomer Filling Cement



PACKAGING

REF	CONTENTS
IFITP	10g powder A2 10g powder A3 6g liquid measuring scoop mixing pad
IFIA2	2x10g powder A2 6g liquid measuring scoop mixing pad
IFIA3	2x10g powder A3 6g liquid measuring scoop mixing pad



INDICATIONS

- For restoration of class III and V cavities
- For pits and fissures
- For deciduous teeth fillings



ADVANTAGES

- Fast-setting
- Aesthetic
- Radiopaque
- Excellent thermal expansion and translucency
- Vita* shades

* Registered trademark of the Vita Zahnfabrik H.Rauter GmbH & Co.KG, Bad Sackingen, Germany



i-FIL[®] LC

Light Curing Glass Ionomer Filling Cement



PACKAGING

REF	CONTENTS
IFILA2	10g powder A2 4g liquid measuring scoop mixing pad
IFILA3	10g powder A3 4g liquid measuring scoop mixing pad

i-FIL[®] LC Mini Kit

REF	CONTENTS
IFILT2	5g powder A2 3g liquid measuring scoop mixing pad
IFILT3	5g powder A3 3g liquid measuring scoop mixing pad



INDICATIONS

- For deciduous teeth fillings
- Restoration of class V/cervical lesions and small single surface class I and II cavities in adult teeth
- Glass ionomer/composite “sandwich” restorations
- Atraumatic restorative treatment or minimally invasive procedures
- Situations where cariostatic activity is required



ADVANTAGES

- Resin reinforced
- Easily mixable
- Radiopaque
- Biocompatible
- Very high compressive, flexural and shear bond strengths
- HEMA free formulation allows decrease allergic reactions
- VITA* shades

* Registered trademark of the Vita Zahnfabrik H.Rauter GmbH & Co.KG, Bad Sackingen, Germany



i-FIX®

Resin Modified Glass Ionomer Luting Cement



PACKAGING

REF	CONTENTS
IIXTP	20g powder 13g liquid measuring scoop mixing pad



INDICATIONS

- For cementation of crowns, bridges, inlays, onlays, orthodontic brackets and bands



ADVANTAGES

- High adhesion to dentin, enamel and non-precious alloys
- Have low film thickness
- Good translucency
- Excellent biocompatibility



i-FIX® Plus

Resin Modified Glass Ionomer Luting Cement



PACKAGING

REF	CONTENTS
IIXPP	20g powder 2x6,5g liquid measuring scoop mixing pad
IIXPL	6,5g liquid

i-FIX® Plus Mini Kit

REF	CONTENTS
IIXPT	7g powder 4g liquid measuring scoop mixing pad



INDICATIONS

- For cementation of all metal, ceramic, porcelain and resin crowns, bridges, inlays, onlays
- For cementation of metal and ceramic orthodontic brackets



ADVANTAGES

- Radiopaque
- Very high adhesion to dentin, enamel and alloys
- Has low film thickness
- Good aesthetic
- Available in one universal shade



i-SIL[®] Silver-Glass Ionomer Cement



PACKAGING

REF	CONTENTS
ISITP	10g powder 3g liquid measuring scoop mixing pad



INDICATIONS

- For restoration of class I and II cavities
- Base under posterior composite restorations and amalgams
- Core build-ups
- Crowns and amalgams repairs
- Deciduous teeth fillings



ADVANTAGES

- Fast-setting
- Radiopaque
- Non-translucent silver reinforced
- Excellent thermal expansion
- High strength and hardness



Conditionier For Glass Ionomer Cements



PACKAGING

REF	CONTENTS
ISOTP	6g liquid



INDICATIONS

- To condition the bonding surface of the tooth prior to using glass ionomer restoratives



ADVANTAGES

- Removes smear layer and debris for improved bonding
- 10 Second application
- Longevity of the restoration
- Leaves smear plugs in the tubules (Less sensitivity risk after operative)



OTHER CEMENTS

Dual Curing Core Build-up and Post Cementation Material



PACKAGING

REF	CONTENTS
ICOR1	9g syringe 10 automix tips 10 intraoral-root canal tips 10 endo tips



INDICATIONS

- For core build-up and post cementation



ADVANTAGES

- High adhesion
- Radiopaque
- Dual cure
- Highly resistant
- High aesthetics
- Auto-mix tips helps to obtain homogeneous consistency



i-FIX[®] Duo

Dual Curing Adhesive Resin Cement



PACKAGING

REF	CONTENTS
IFDTP	8g syringe 10pcs automix tips (for inlays/onlays, crowns, bridges) 10pcs intraoral-root canal tips (for posts)



INDICATIONS

- For permanent cementation of indirect restorations including ceramic, composite and metal-based inlays, onlays, crowns and bridges
- For permanent cementation of posts



ADVANTAGES

- Dual curing (light and chemical)
- Radiopaque
- High strength
- Highly resistant
- Perfect seal
- Optimal adhesive characteristics
- Automix tips ensures homogenous mixture



Resin Modified Zinc Oxide-Eugenol Cement



PACKAGING

REF	CONTENTS
ICEKP	20g powder 6g liquid measuring scoop mixing pad
ICETP	2x20g powder 12g liquid measuring scoop mixing pad



INDICATIONS

- For bases and linings under amalgams
- For bases and linings under glass ionomers
- For temporary fillings
- For temporary fixing crowns and bridges



ADVANTAGES

- High strength
- Quick setting
- Resin modified



i-ZOE[®]

Zinc Oxide-Eugenol Cement



PACKAGING

REF	CONTENTS
IZMP1	40g powder, normal setting
IZMP2	40g powder, slow setting
IZML1	10ml liquid
IZML3	50ml liquid



INDICATIONS

- For temporary tooth fillings
- For temporary fixing crowns and bridges
- For bases under cement restorations



ADVANTAGES

- Quick removing
- Simply to use



ROOT CANAL MATERIALS

i-EDTA® Solution

Root Canal Preparation Solution, 17% EDTA



PACKAGING

REF	CONTENTS
IED250	250ml bottle with special connector 3ml empty syringe
IEDLP	50ml bottle



NO LIQUID SPILLAGE

Eliminates risk of the liquid spillage

- ✚ Safe application thanks to luer-lock type syringe
- ✚ The best protection against accidentally spillage of the product during application



INDICATIONS

- Helps to clean, soften and widen the dentinal walls of the root canals



EMPTY SYRINGE

Highest quality empty syringe included in the box

- ✚ Rubber ring on the plunger ensures perfect control and smoothness of moving when taking and applying the product



ADVANTAGES

- 17% EDTA solution cleanses root canals rapidly
- Neutral pH
- Helpful in enlarging of canals
- Opens calcified canals
- Water-based, easily reach narrow apical area and can be easily removed



SPECIAL CONNECTOR

Bottle has the special connector attached

- ✚ There is no need for additional adaptor because syringe tightens directly to connector on the bottle
- ✚ There is no need to invert bottle, as inside is tube trough which you can easy bring the liquid to syringe



TEMPORARY MATERIALS

i-PRO^N Temporary Filling Material



PACKAGING

REF	CONTENTS
IPMWP	38g paste white
IPMPP	38g paste pink



INDICATIONS

- For temporary filling of cavities and temporary fixing of post crowns



ADVANTAGES

- High adhesion
- Non sticky
- Radiopaque
- High strength and hardness
- Easily packable consistency
- Different hardness after setting
- Eugenol free



i-PRO[®] LC

Light Curing Temporary Filling Material



PACKAGING

REF	CONTENTS
IPLTP	2x4g syringes



INDICATIONS

- For temporary fillings



ADVANTAGES

- Quick curing
- High adhesion
- High strength and hardness
- Easily packable consistency
- Ideal for temporary fillings of short and extended periods



ETCHANTS

Phosphoric Acid Etching Gel And Liquid, 37% Phosphoric Acid



PACKAGING

REF	CONTENTS
GEL TYPE	
IGECP	4,3g syringe, 5 tips
IGEM1	4x1,2ml syringes, 10 tips
IGEK1	4x4,3g syringes, 10 tips
IGE12B	12g syringe, 10 tips
IGE50B	42g syringe, 2x4,3g syringes, 20 tips
LIQUID TYPE	
IGEGL	5ml bottle
IGEGL	10ml bottle



INDICATIONS

- For tooth enamel and / or dentin etching



ADVANTAGES

- Optimum level of viscosity
- 37% phosphoric acid
- Removes smear layer and opens dentinal tubule orifices



PROPHY MATERIALS

i-FASTE®

Tooth Surface Polishing Paste



PACKAGING

REF	CONTENTS
IFCTP	30g paste coarse, mint, shade green
IFC100	100g paste coarse, mint, shade green
IFCD1	100x2g single dose cups, paste coarse, mint, shade green
IFMTP	30g paste medium, orange, shade orange
IFMC30	30g paste medium, cheery, shade reddish
IFMM30	30g paste medium, mangosteen, shade royal purple
IFMB30	30g paste medium, bubble mint, shade pear white
IFM100	100g paste medium, orange, shade orange
IFMC100	100g paste medium, cheery, shade reddish
IFMM100	100g paste medium, mangosteen, shade royal purple
IFMB100	100g paste medium, bubble mint, shade pear white
IFMD1	100x2g single dose cups, paste medium, orange, shade orange
IFMCD1	100x2g single dose cups, paste medium, cheery, shade reddish
IFMMD1	100x2g single dose cups, paste medium, mangosteen, shade royal purple
IFMBD1	100x2g single dose cups, paste medium, bubble mint, shade pear white
IFFTP	30g paste fine, apple, shade yellow
IFF100	100g paste fine, apple, shade yellow
IFFD1	100x2g single dose cups, paste fine, apple, shade yellow



INDICATIONS

- To clean debris, plaque, calculus, stains, and other accretions from the teeth
- For the teeth surface preparation (cleaning and polishing) prior to restorations and fluoride treatment;
- For recontouring, finishing and polishing the surface after restoration to restore normal contours, smooth margins, and to create a high luster shine, the overall appearance and longevity of the restoration itself



ADVANTAGES

- Simple to use
- Fresh taste



i-SHINE®

Composite Polishing Paste



PACKAGING

REF	CONTENTS
ISHP1	4g syringe



INDICATIONS

- For polishing of composite restorations (to restore smooth surface and natural luster, soften margins, improve overall appearance, and ensure longevity of the restoration).



ADVANTAGES

- Ultra-fine aluminium oxide particles
- Ensures high luster surface
- Optimum viscosity
- Simple to use



TOOTH PASTE

Symbiodent

MULTI-EFFECT toothpaste powered by nano Hydroxyapatite



PACKAGING

REF	CONTENTS
ISY075	75ml
ISYM1	12x75ml



INDICATIONS

- Q MULTI-EFFECT toothpaste



ADVANTAGES

- Q Repairing effect
- Q With Nano hydroxyapatite
- Q Enamel remineralization
- Q Gentle enough for daily use
- Q Fluoride content helps to prevent cavities and strengthen the enamel
- Q Extra cool mint flavor



RETRACTION MATERIALS

i-PAK[®]

Knitted Retraction Cord



PACKAGING

REF	CONTENTS
IPU03	i-PAK, #000, 244cm, ultra thin, black
IPU02	i-PAK, #00, 244cm, thin, yellow
IPU01	i-PAK, #0, 244cm, medium, lilac
IPU11	i-PAK, #1, 244cm, medium thick, blue



INDICATIONS

- For gingival displacement and hemostasis before bonding and/or restorative placement procedures
- For use to aid in making impressions for fixed prosthetics
- #000: for lower anteriors; when luting near gingival and subgingival veneers; class III, IV V restorations; first cord for “two cord” technique.
- #00: during preparation and cementation of veneers; restorative procedures dealing with thin, friable tissues.
- #0: for anterior teeth; as upper cord for “two cord” technique.
- #1: for the anterior teeth preparation.



NEW BOTTLE DESIGN

- 📌 Delivers what dental professionals want
- 📌 Easy to use



LABEL WITH RULER

- 📌 Easy to measure



ADVANTAGES

- Cord is made of 100% cotton
- Knitted into thousands of tiny loops forming long interlocking chains
- The unique knitted design exerts a gentle continuous outward force following placement as knitted loops seek to open
- Rapid retraction/displacement
- Easy to control and place
- Will not tangle in burs or packers
- When using i-PAK plain knitted cords, since they carry significantly greater quantities of hemostatic solution than conventional cords.



CUP WITH CUTTER

- 📌 Saves time
- 📌 With integral stainless steel blade cuts clean and protects fingers every time
- 📌 Fast, precise cutting of retraction cord
- 📌 No scissors needed
- 📌 Safe to use
- 📌 No waste

IMPRESSION MATERIALS

i-MPRESS®

C - Silicone Impression Material



PACKAGING

REF	CONTENTS
IMPP1	Putty, 910ml, spoon
IMPL1	Light Body, 140ml, blue
IMPC1	Universal Activator Gel, 30ml, green
IMPKC	Mini Kit, 200ml putty, 40ml light body, 30ml universal activator, mixing pad, spoon
IMPK1	Kit, 910ml putty, 140ml light body, 2x30ml universal activator, mixing pad, spoon

i-MPRESS Light Body

- Second impression material for two step, double mix, sandwich technique
- Corrective material for putty-wash impression technique
- Relining impression material



INDICATIONS

- For making of detailed impressions for dental and orthodontic use

i-MPRESS Putty

- Initial impression material for two step, double mix, sandwich technique
- Initial impression material for putty-wash impression technique
- Impression material for study models, orthodontic models, keys
- Protective isolation of teeth during fitting of prostheses

i-MPRESS Universal Activator

- Universal Activator for i-MPRESS Putty (tray-material) and i-MPRESS light body (washmaterial)



ADVANTAGES

- Better elastic properties on removal
- Adequate tear strength
- Hydrocompatibility on fluids
- Biocompatible
- Pleasant odor



MISCELLANEOUS

i-OIL

Dental Handpieces Heads Oil



INDICATIONS

- For the internal mechanisms of dental handpieces and air motors and general handpiece maintenance



PACKAGING

REF	CONTENTS
IHSCP	500ml
IHACP	Special nozzle for handpieces



INDICATIONS

- For hand-mixing of dental materials



PACKAGING

REF	CONTENTS
IB040	5.1cm x 5.1cm, 20 sheets
IB041	7.6cm x 7.6cm, 50 sheets

Mixing Pads

Dental Mixing Pads



Disposable Micro Applicators

Disposable Micro Applicators



PACKAGING

REF	CONTENTS
IB05R	100 pcs., Regular, blue and light blue
IB05F	100 pcs., Fine, green and light green
IB05U	100 pcs., Ultrafine, lavender and light lavender



dia. 2.5mm ● dia. 2.0mm ● dia. 1.5mm ●

Regular
Blue and
Light Blue

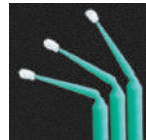
Fine
Green and
Light Green

Ultrafine
Lavender and
Light Lavender



INDICATIONS

- For application of dental materials (bonding agents, etchants)



Bends into any angle for the placement of small controlled amounts of material in limited access areas



ADVANTAGES

- Hygienic dispensing
- Bends into any angle for the placement of small controlled amounts of material in limited access areas
- Multiple applicator colors are available to identify different materials during a procedure
- Three precise head sizes, Regular (2.5 mm), Fine (2.00 mm) and Ultrafine (1.5 mm)



i-SPRAY

Universal Cleaning Spray



PACKAGING

REF	CONTENTS
IHCCP	500ml



INDICATIONS

- For contra-angles, handpieces, electric micro motors, turbines, couplings, air micro motors internal and external cleaning
- Recommend before lubricating



ADVANTAGES

- Universal
- Removes dirt and debris from equipment
- Dissolves impurities contamination for optimal bonding
- Economical



i-OCCLUSPRAY

Occlusion Spray



INDICATIONS

- To test occlusal contacts and accurate fit of crowns and bridges in patient's mouth or on the model before fixing crowns and bridges in mouth for permanent use



PACKAGING

REF	CONTENTS
IOCKP	75ml, green



i-BASEWAX

Modelling Wax



INDICATIONS

- For the construction of the wax rim (for the record of central occlusion; for the selection of size and position of the anterior teeth)
- For the construction of the wax denture with set artificial teeth ("try in" patients' mouth; to test occlusal contacts)



PACKAGING

REF	CONTENTS
WA125	500g, pink, regular



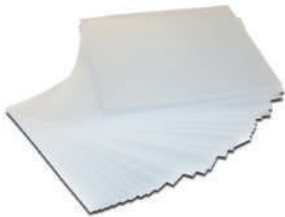
i-SMILE

Tooth Whitening Gel



PACKAGING

REF	CONTENTS
ISMFC	3g syringe, 10% carbamide peroxide, with fluoride, taste orange
ISMK1	4x3g syringes, 10% carbamide peroxide, with fluoride, taste orange
ISNFC	3g syringe, 16% carbamide peroxide, with fluoride, taste apple
ISNK1	4x3g syringes, 16% carbamide peroxide, with fluoride, taste apple



INDICATIONS

- For home bleaching of vital teeth
- For home bleaching of non-vital teeth
- For home bleaching of discoloured teeth



ADVANTAGES

- Simple to use
- Minimally invasive treatment
- Ideal consistency
- With fluoride



PACKAGING

REF	CONTENTS
ISTTP	1mm, 25pcs.
ISTTR	1,5mm, 15pcs.
ISTTO	2mm, 12pcs.
ISTTK	3mm, 8pcs.
ISTTT	4mm, 6pcs.



INDICATIONS

- For fabrication of bleaching trays
- For fabrication of bruxing trays

Vinyl Sheets

i-BLOCK

Light Curing Block Out Model Resin



PACKAGING

REF	CONTENTS
IBOTP	3,8g syringe, 3 tips
IBOK1	4x3,8g syringes, 12 tips



INDICATIONS

- For creating reservoir space for bleaching trays
- For stone model repairs
- Other laboratory procedures



ADVANTAGES

- The product is sufficiently viscous and allows easy application and control over the place to be protected
- High adhesion isolation
- Easily removed
- Blue shade



LIQUID COFFERDAM

i-DAM

Light Curing Liquid Cofferdam



PACKAGING

REF	CONTENTS
IDABP	3,5g syringe, shade blue, 3 tips
IDAM1	4x1,2ml syringe, shade blue, 10 tips
IDABK	4x3,5g syringes, shade blue, 10 tips
IDAGP	3,5g syringe, shade green, 3 tips
IDAM2	4x1,2ml syringe, shade green, 10 tips
IDAGK	4x3,5g syringes, shade green, 10 tips



INDICATIONS

- For isolation of gingival tissues in cases where there is a risk of irritation by contact with products used in the clinical procedure (i.e. office whitening procedure)
- To help with the complete isolation for a better sealing of a cavity preparation or endodontic treatment



ADVANTAGES

- The product is sufficiently viscous and allows easy application and control over the place to be protected
- Excellent adhesion on the gingiva
- High adhesion isolation
- Easily removed
- No gingival tissue irritation
- Blue or Green shade



ISOLATING SOLUTIONS

Separating Solution For Plaster



PACKAGING

REF	CONTENTS
ISERT	500ml liquid red
ISERC	1000ml liquid red
ISEOT	500ml liquid orange
ISEOC	1000ml liquid orange
ISEBT	500ml liquid blue
ISEBC	1000ml liquid blue



INDICATIONS

- For separating plaster from denture material
- For separating plaster from plaster



RED

for cold curing acrylics

Red is a quick drying liquid which forms a skin and is suited to light work such as casting dentures.



ADVANTAGES

- Excellent separating properties
- Ensures smooth surfaces
- Alginate based



ORANGE

for heat curing acrylics

Orange is slow drying and as a result penetrates deep into the plaster. This separating agent is ideally suited to the packing/pressing technique.



BLUE

for cold - and heat curing acrylics

Blue is suitable for both packing/pressing technique and cast moulding. The high quality of the raw materials guarantees optimum separation with both techniques.

Isolating Solution For Models

Isolating Solution For Models



PACKAGING

REF	CONTENTS
IL08	50ml bottle



INDICATIONS

- Thin layer isolating solution
- Specially developed for wax-dipping techniques



ADVANTAGES

- Microfilm isolates plaster from wax or porcelain
- Silicon based
- A thin layer is effective for days; no reapplication required
- Isolates the plaster, acrylic and metal surfaces to permit wax application





i-STONE® II

Synthetic Dental Plaster Type II



PACKAGING

REF	CONTENTS
IS2TP	5000g white
IS2CP	25000g white



PHYSICAL DATA

- Setting time app. 10min
- Setting expansion after 2h min. 0.06%, max. 0.30%
- Compressive strength after 1h min. 9.0MPa



i-STONE® III

Synthetic Dental Hard Stone Type III



PACKAGING

REF	CONTENTS
IS3TPY	5000g yellow
IS3CPY	25000g yellow
IS3TPG	5000g green
IS3CPG	25000g green
IS3TPB	5000g blue
IS3CPB	25000g blue



PHYSICAL DATA

- Setting time app. 15min
- Setting expansion after 2h min. 0.00%, max. 0.20%
- Hardness min. 80MPa
- Compressive strength after 1h min. 20.0MPa

i-STONE® Orto

Synthetic Dental Hard Stone For Orthodontics Type III



PACKAGING

REF	CONTENTS
IS3OT	5000g extra white
IS3OP	25000g extra white



ADVANTAGES

- Balanced expansion
- Consistent quality



PHYSICAL DATA

- Setting time app. 11min
- Setting expansion after 2h min. 0.00%, max. 0.20%
- Hardness app. 90MPa
- Compressive strength after 1h min. 20.0MPa



i-STONE® Art

Synthetic Dental Hard Articulating Stone Type III



PACKAGING

REF	CONTENTS
IS3AT	5000g white
IS3AC	25000g white



PHYSICAL DATA

- Setting time app. 3,5min
- Setting expansion after 2h min. 0.00%, max. 0.20%
- Hardness min. 50MPa
- Compressive strength after 1h min. 20.0MPa



i-STONE® IV

Synthetic Dental Extra-Hard Stone Type IV



PACKAGING

REF	CONTENTS
IS4TP	5000g brown
IS4CP	25000g brown



PHYSICAL DATA

- Setting time app. 10min
- Setting expansion after 2h min. 0.00%, max. 0.15%
- Hardness min. 150MPa
- Compressive strength after 1h min. 35.0MPa



i-STONE® Extra

Synthetic Dental Extra-Hard And Extra-Fine Stone Type IV



PACKAGING

REF	CONTENTS
IS4EP	5000g yellow-brown
IS4EC	25000g yellow-brown



PHYSICAL DATA

- Setting time app. 12min
- Setting expansion after 2h min. 0.00%, max. 0.15%
- Hardness min. 250MPa
- Compressive strength after 1h min. 35.0MPa

INVESTMENTS AND POLISHING MATERIALS

i-VEST[®]N

Phosphate Investment



PACKAGING

REF	CONTENTS
IVNCP	5000g powder
IVNPP	12x160g powder
IVNEP	25000g powder
IVNLP	500ml liquid
IVNLC	1000ml liquid



INDICATIONS

- ❑ For chrome-cobalt alloys
- ❑ For model casting system-framework
- ❑ For overnight technique



ADVANTAGES

- ❑ Quick casting
- ❑ Water or liquid mix





PACKAGING

REF	CONTENTS
IVECP	5000g powder
IVEPP	12x160g powder
IVEEP	25000g powder
IVNLP	500ml liquid
IVNLC	1000ml liquid

i-VEST® Extra Investment



INDICATIONS

- For crown and bridgework
- For all alloys and pressable ceramic
- For use in speed and overnight technique

Pumice

Dental Grade Pumice For Dentures Polishing



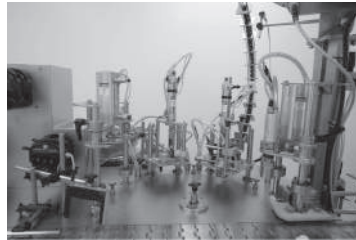
PACKAGING



REF	CONTENTS
IPETP	5000g powder
IPECP	25000g powder



from **QUALITY** of the solution
throughout **QUALITY** of the implementation
to **QUALITY** of performance and stability



 Innovative
Dental Products
www.i-dental.lt

UAB "Medicinos linija"

Address:

Aviacijos str. 28
Siauliai LT-77103
Lithuania

Phone:

+370 41 553 553

E-mail:

info@i-dental.lt