

# FONE

WWW.FANTA-DENTAL.COM



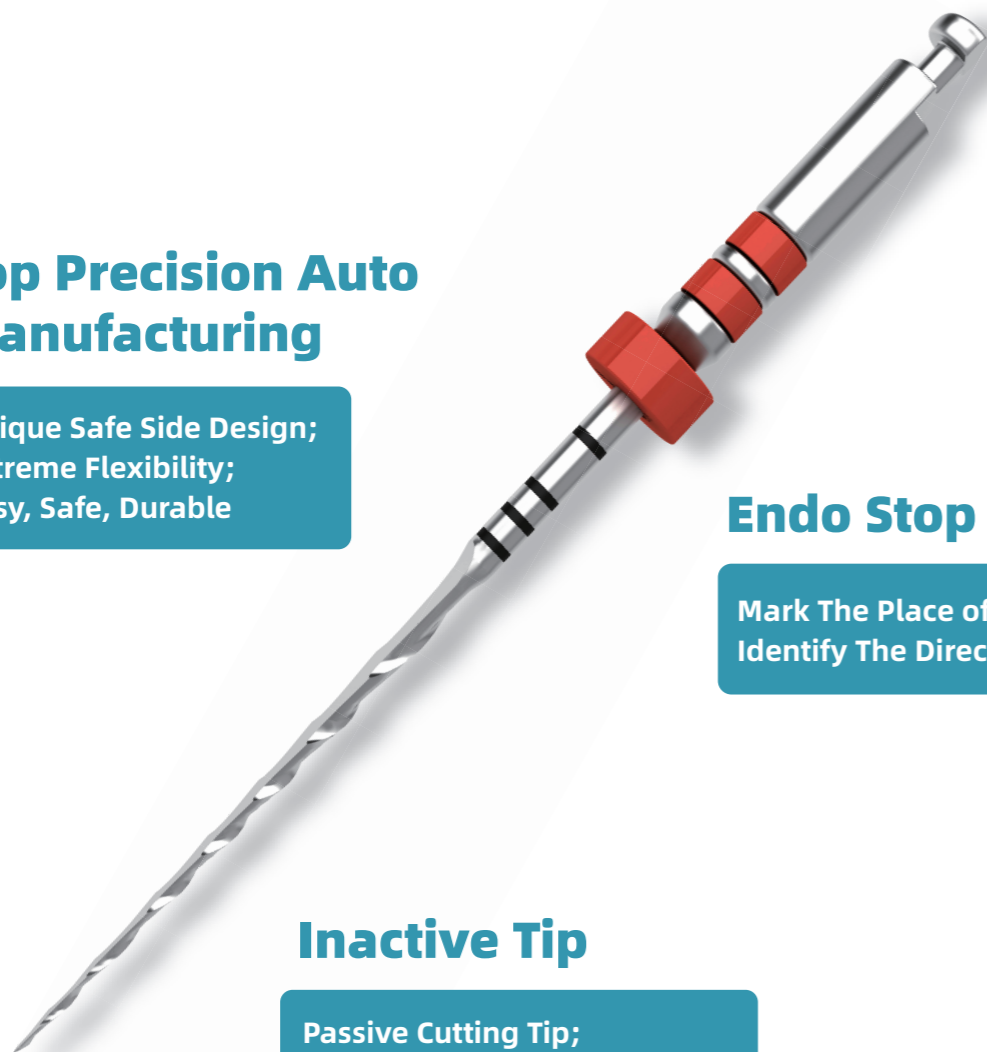
TEL:0086-21-64033133  
E-MAIL:SALES@FANTA-DENTAL.COM

# AFT™ F-ONE

# FONE<sup>TM</sup>

## Top Precision Auto Manufacturing

Unique Safe Side Design;  
Extreme Flexibility;  
Easy, Safe, Durable



## Endo Stop

Mark The Place of Canal Length;  
Identify The Direction of File Bending

## Inactive Tip

Passive Cutting Tip;  
Less Agressiveness Formation

The latest products bearing the Fanta label are in keeping with the company's strategy of offering a new generation instruments with special flat side design which improves the cleaning and shaping of root canal during endodontic treatment.

## Why AFT<sup>TM</sup> F-One

It's always a challenge to balance the sufficient cutting efficiency and extreme flexibility, and that's what we are specializing in our AFT<sup>TM</sup> F One: CM wire tech allows for the extreme flexi-bility and the cutting efficiency gets improved by our flat side design.

### Edged Sharped Blade + Flat Side Design

### Decreased time during instrumentation

Time saving is always the vital cause we take account for convenience of dentists. We focus our patented edge process on making the sharper blade, and consequently the cutting efficiency gets improved. S-Shaped cross-sectional design allows F One for more flexibility and better debris transportation coronally. Moreover, unique flat side design is born to serve you, providing you a more space reserving the debris, allowing the debris on the flutes moving to the space and consequently enhance the ability of debris removal efficiency.

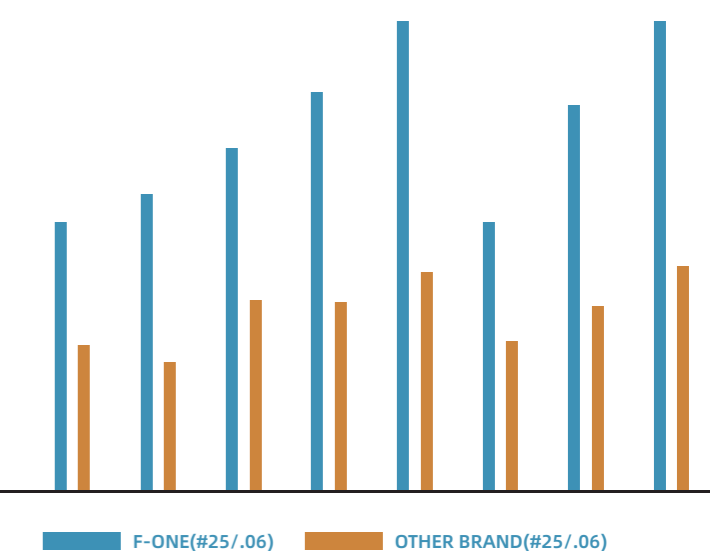
### 600% Higher Resistance to Cyclic Fatigue than Normal Rotary Files

### Greater cyclic fatigue to resistance

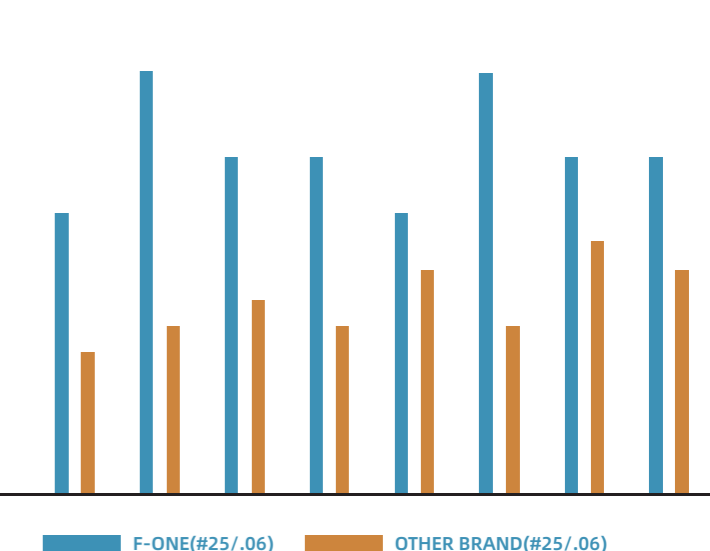
It's the very flat side design, the mass was reduced even more by the flat-sided design. The more complex the canals are, the more relevant the influence of the mass—a more severe curvature results in a higher flexural stress. It also reduces stress by sweeping debris from the flutes to the relieved area, and consequently the cyclic fatigue get improved.

\*Cited in 'Role of the Flat-Designed Surface in Improving the Cyclic Fatigue Resistance of Endodontic NiTi Rotary Instruments', Gianluca Gambarini, Gabriele Miccoli, Marco Seracchiani, Tatyana Khrenova, Orlando Donfrancesco, Maurizio D'Angelo, Massimo Galli, Dario Di Nardo 1, and Luca Testarelli, Materials 2019

### TTF(s)



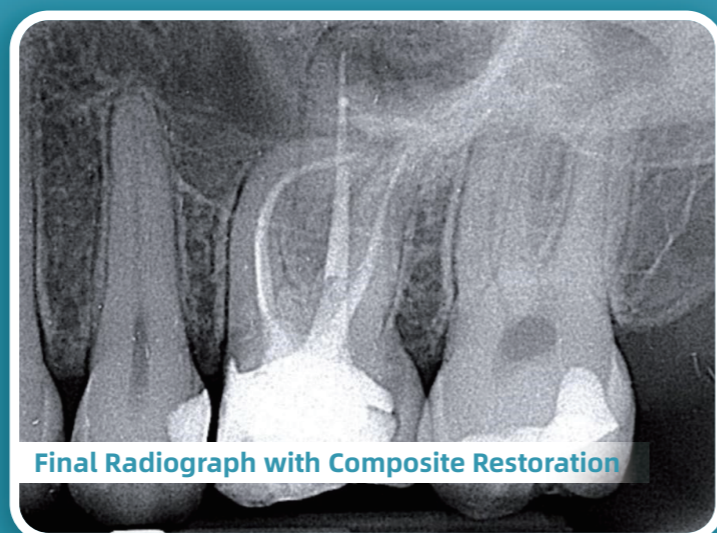
### FS(mm)



\*(TTF)Time to Flature\*(FS)Fratured Segment  
\*Test from Sepienza of Rome

# Never Stop, Even If a Severely Curved Root

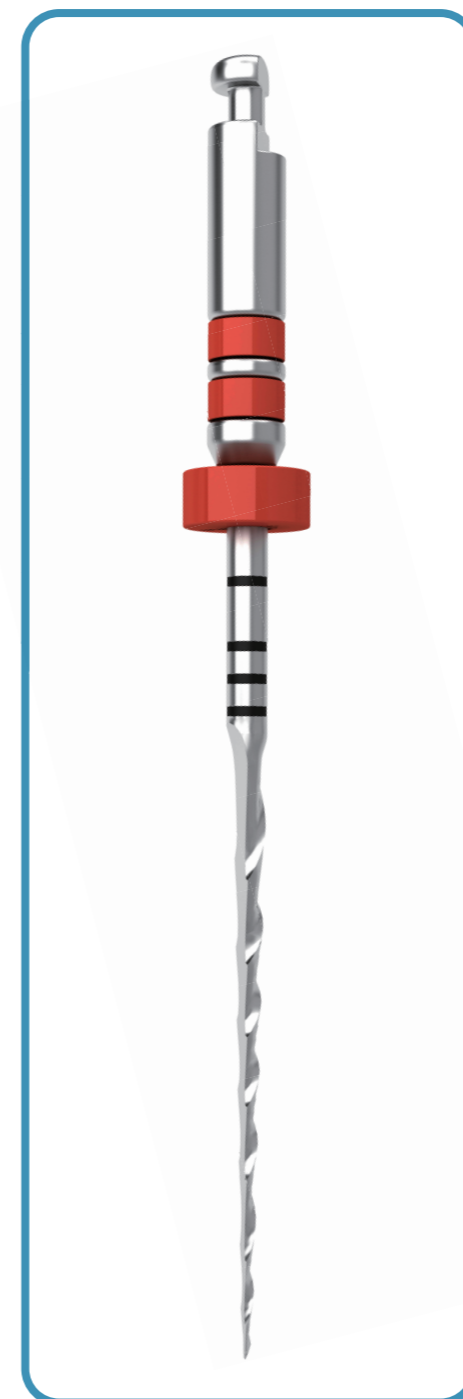
Managing curved canals may be quite difficult to and may leads to many iatrogenic complications especially file separation. AF™ F One System, adopted our AF-H wire tech, aims at the smooth root canal treatment, two tapers for choice to provide your convenience and perfect your every cases.



"F One is so far one of the best file I've used. It can go smoothly in even narrow and curved canals. High cutting efficiency, very safe file. But I use it in for sure after getting patency with k #10".

--Dr. Massimo Giovarruscio

Shot by Dr. Ahmed Alwaidh



# FONE™

- ▶ AF™-H Wire technology
- ▶ Single File System
- ▶ Excellent Adaption to Curved Canals
- ▶ Patented Flat-Side Design
- ▶ Superior Cutting Efficiency
- ▶ High Resistance to Cyclic Fatigue
- ▶ Debris removed efficiently in coronal direction
- ▶ Easily bypassed if the file is separated

SINGLE SIZE	21MM	25MM	31MM	TAPER	SIZE	
F-ONE F1	A20 2304 021 020	A20 2304 025 020	A20 2304 031 020	04	#20	●
F-ONE F2	A20 2304 021 025	A20 2304 025 025	A20 2304 031 025	04	#25	●
F-ONE F3	A20 2304 021 035	A20 2304 025 035	A20 2304 031 035	04	#35	●
F-ONE F4	A20 2306 021 020	A20 2306 025 020	A20 2306 031 020	06	#20	●
F-ONE F5	A20 2306 021 025	A20 2306 025 025	A20 2306 031 025	06	#25	●
F-ONE F6	A20 2306 021 035	A20 2306 025 035	A20 2306 031 035	06	#35	●

(3pcs/box)