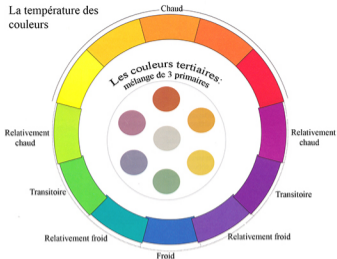


La température des couleurs

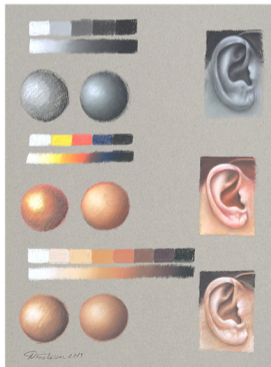


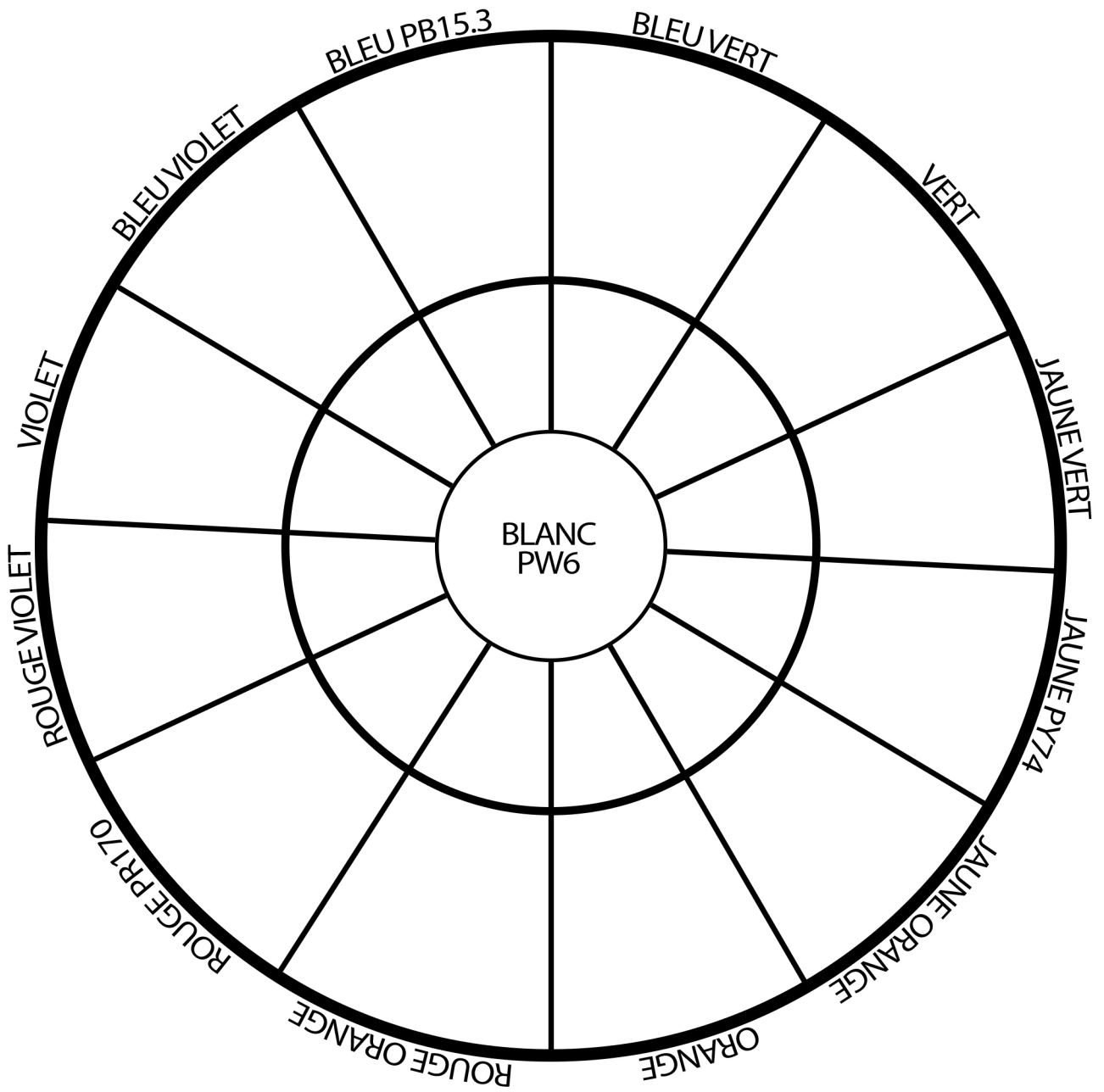
Parallèle entre:

1. Les tons de gris

2. Les couleurs primaires

3. Les couleurs tertiaires





$$\square + \square = \square$$

PB29 PY74

$$\square + \square = \square$$

PY74+PB15.3 PR170

$$\square + \square = \square + \square = \square$$

PB29 PR170 PW6

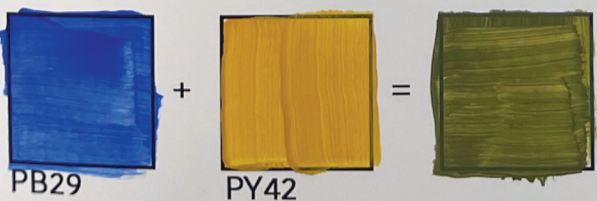
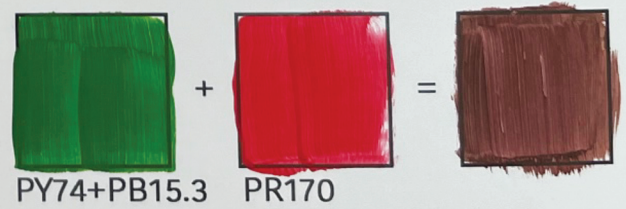
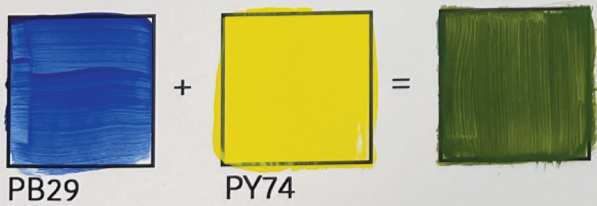
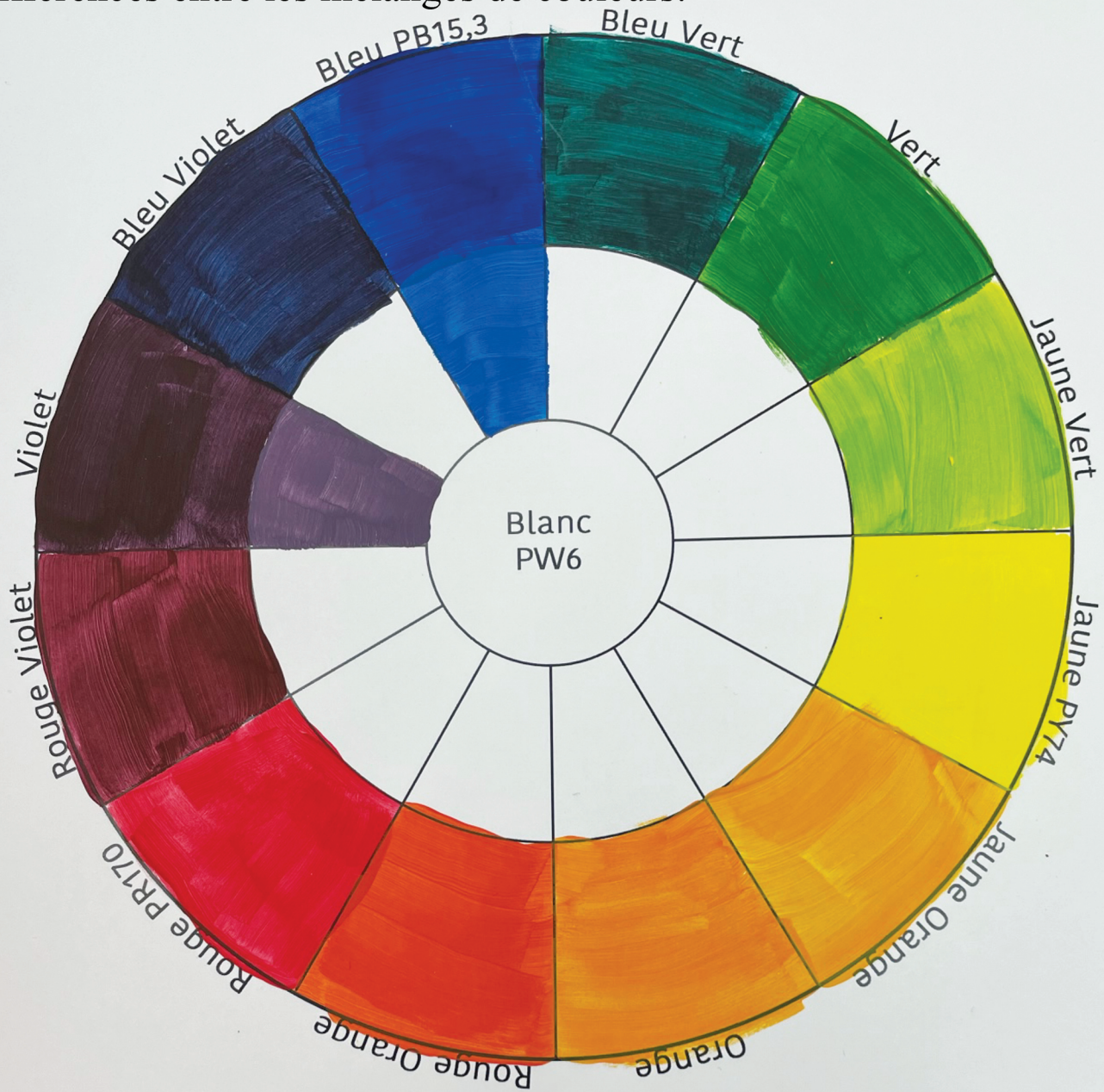
$$\square + \square = \square$$

PB29 PY42

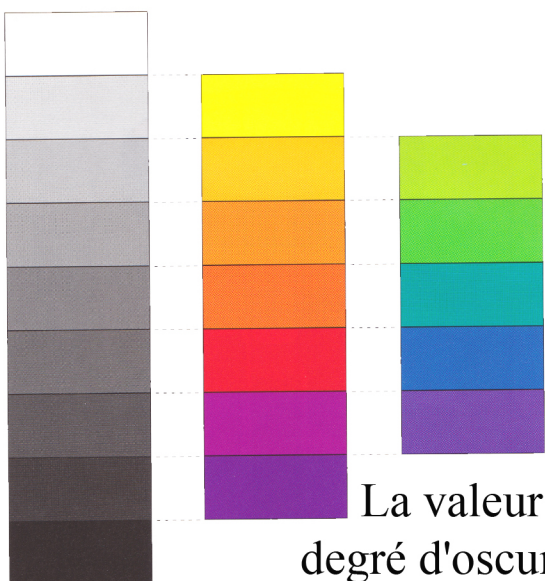
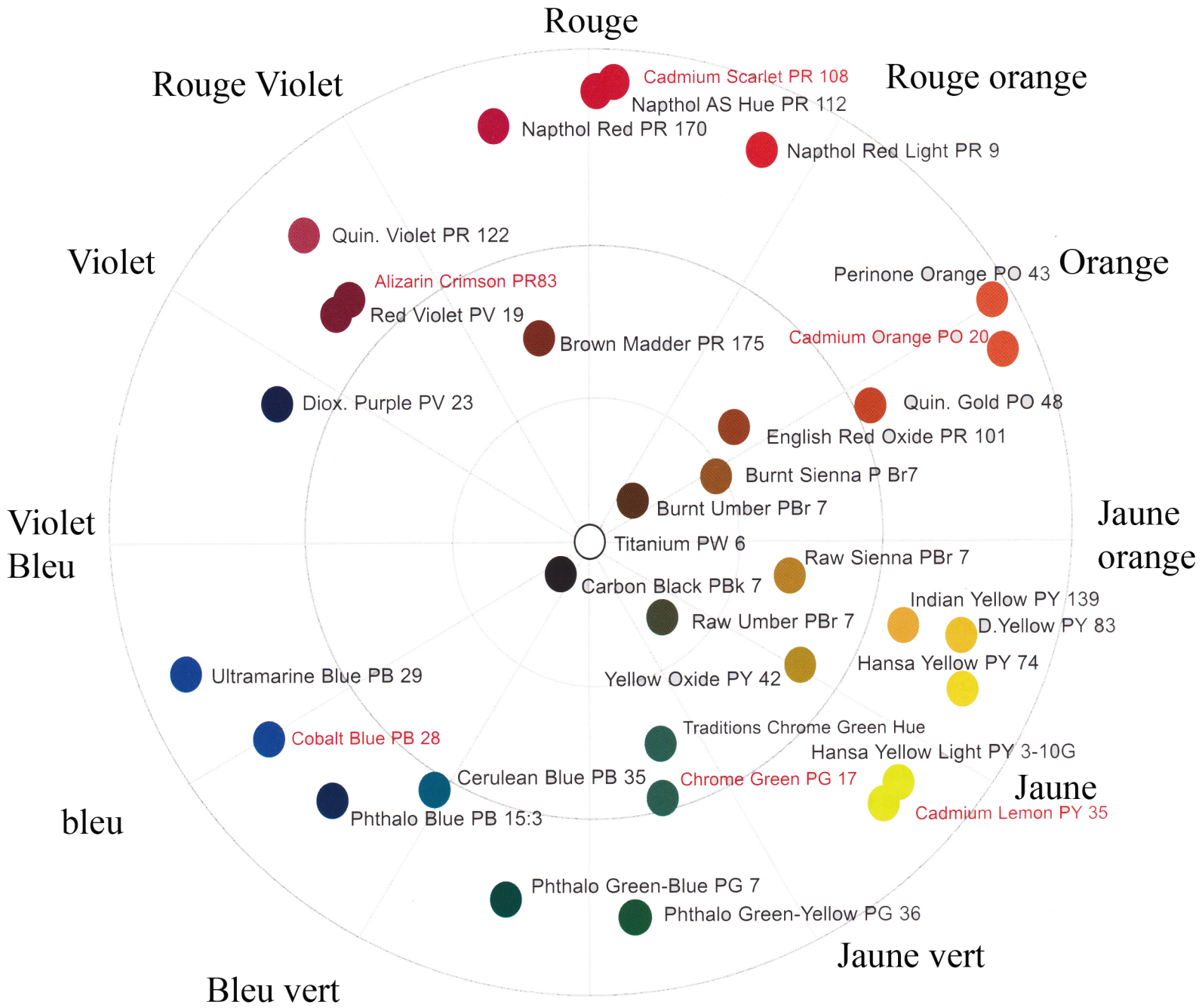
$$\square + \square = \square$$

PY74 PR170+PB15.3

Différences entre les mélanges de couleurs:



Roue des couleurs Traditions



La valeur des couleurs:
degré d'obscurité ou de clarté

Vert

