

Exercice de portrait en couleur: crayons prismacolor premium.



+



1. Réserver les lumières, situer les ombres.

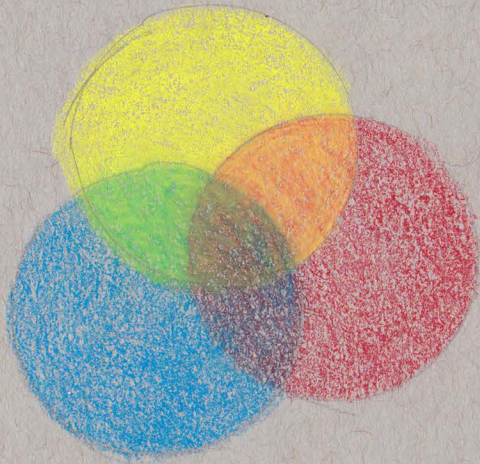


2. Enrichir les teintes et finition.

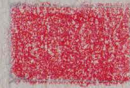


# Mélanges de couleur : crayons prismacolor premium

primaires froides :



915



923

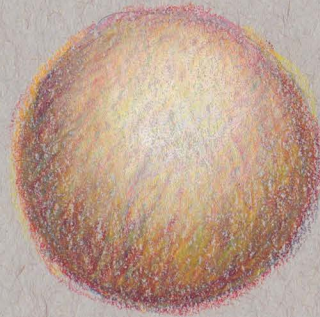


903

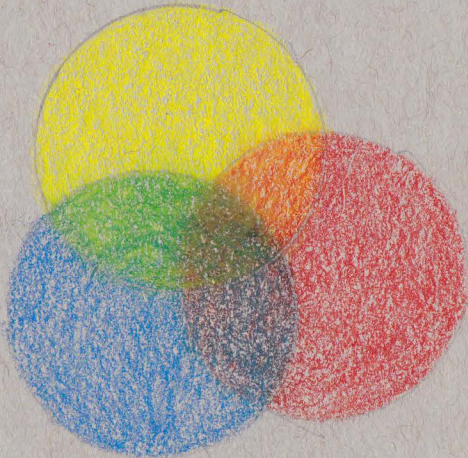
+



938



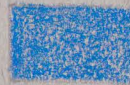
primaires chaudes :



916



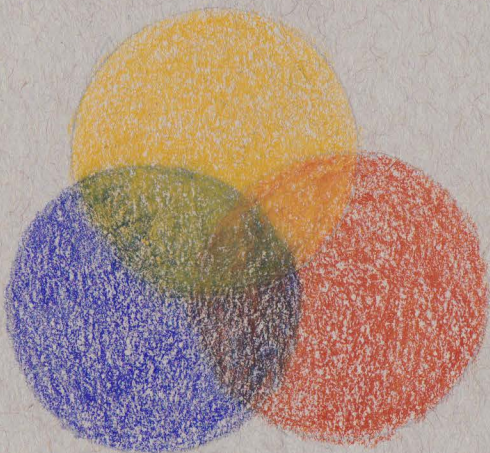
922



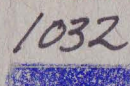
103



teintes amorties :



942



933

