

READY TO RACE

>> www.ktm.com

#GETDUKED

KTM 790 DUKE

KTM

 CENTRAL FLORIDA
POWERSPORTS
.com

KTM 790 DUKE



790



CAUTION

HANDLE WITH CARE

Dubbed THE SCALPEL, there is no denying the KTM 790 DUKE's sharp handling. With the agility you'd expect from a single, but with the meaty punch of a twin, this is one devastatingly accurate apex hunter. Boasting a 799 cc LC8c parallel twin motor nestled into an ultra-compact chassis, it's all about being fast where it counts – in the turns.

100%

ALL TORQUE, MORE ACTION

Built for torque, this liquid cooled, 8 valve, DOHC parallel twin delivers a thrilling punch and major power. An advanced Ride-by-Wire system guarantees great refinement and overall usability, as well as low fuel consumption and emission figures.

However, when the urge strikes – and it will strike – TRACK MODE offers unlimited thrills and true READY TO RACE track-shredding characteristics.



KTM 790 DUKE

799

CUBIC CENTIMETERS OF ACCURACY

While a large dose of the KTM 790 DUKE's agility comes from the deftness of its lightweight chassis, it is the combination of an innovative cast aluminum subframe and the WP APEX suspension that really sharpen its handling.

Engineers had one goal in mind – keep the chassis as rigid and compact as possible for sharper turn-in and greater lean angles, allowing it to slice through the turns with extreme accuracy.



KTM 790 DUKE

The hunkered-down aggressive stance of the KTM 790 DUKE is intimidating to all who cross its path. It clearly takes some of its design cues from the KTM 1290 SUPER DUKE R, showing off distinctive sharp lines and compact proportions, perfectly set off by signature KTM graphics.




KTM 790 DUKE - BLACK

KTM



KTM 790 DUKE - ORANGE

790 DUKE



POWER PARTS

NEXT LEVEL CUSTOMIZATION

With technical accessories and components specifically designed alongside the KTM 790 DUKE throughout its development, taking the SCALPEL experience to the next level has never been easier.

SHARPENING THE SCALPEL

Taking the intensity of the KTM 790 DUKE to the next level, a range of KTM PowerParts have been developed to give THE SCALPEL even more of an edge.



01

01 AKRAPOVIČ “SLIP-ON LINE”

Made from high-grade titanium, the AKRAPOVIC SLIP-ON saves weight, and produces a distinct, sporty sound with great race-inspired looks.

02 FACTORY TRIPLE CLAMP

Manufactured from high-strength CNC-machined aluminum, the FACTORY TRIPLE CLAMP is stiffer than the standard triple clamp, and sports a high quality orange anodized finish.



02

03 LOWERING KIT

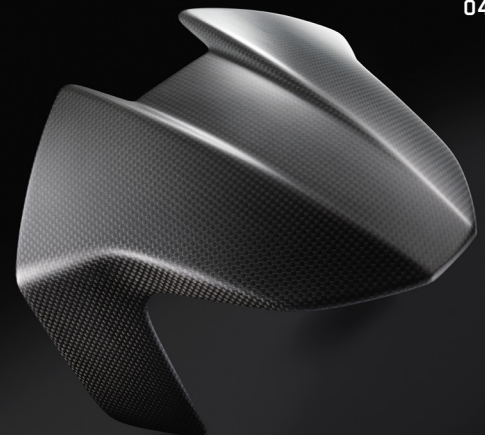
With a 25mm lowered seat height, the KTM 790 DUKE LOWERING KIT has been developed in collaboration with WP, and provides the perfect compromise between maximum chassis performance and minimum possible seat height.



03

04 FENDER

Stiffer and lighter than the standard plastic components the high quality carbon fiber FENDER puts your KTM perfectly in the limelight with its clean satin surface finish.



04

05



06



05 HEATED GRIPS

Warm hands, regardless of the weather!
Controlled via an additional control unit
which will be mounted on the handlebar.

06 ERGO SEAT

Under the premium quality cover, special
3D structural mesh foam with built in form
ensures even pressure distribution and
increased seated comfort.

07



ERGO SEAT (+20 MM)

Seat height increased by 20 mm.

ERGO SEAT (-20 MM)

Seat height reduced by 20 mm.

07 PASSENGER ERGO SEAT

Offering increased comfort, it is visually a
perfect match for the rider's Ergo Seat.

08 PASSENGER SEAT COVER

Achieve a full racing look from front to back
in a matter of seconds, without tools.

08



09



09 TANK BAG

Using the Quick-Lock Evo System, the TANK
BAG can be mounted or removed within
seconds. Durable and expandable for
increase storage space.

10 SIDE BAG SET

Our newly developed side bags provide sufficient storage for short weekend trips or long journeys. Integrated perfectly into the motorcycle's design, the SIDE BAG SET can be used with a passenger. Carrier required for installation.



11 FACTORY GRAPHICS KIT

Standard is just not your thing? Customize your own jaw-dropping motorcycle and stand out from the competition.

12 KTM MY RIDE CONTROL UNIT

With KTM MY RIDE you can tether your smartphone to the bike via Bluetooth, giving you full control over incoming calls and an audio player. All the information pops up on the bike's display and you manage this optional extra with the mode switch, keeping your hands where they belong. On the handlebar.



13 DONGLE

The dongle saves your preferred ABS setting. If the ABS function is switched off, it remains deactivated even after switching the ignition back on. The front and rear wheels can lock at any time without ABS controlling the braking procedure.



POWER WEAR

SHARP STREET STYLE

Shred the streets in style! The KTM PowerWear product range provides riders of the KTM 790 DUKE with a variety of premium gear and accessories to enhance their style and performance.



STREET-SMART RIDING GEAR

KTM 790 DUKE riders demand performance – not only from their motorcycles, but from their riding gear, too.

01 X-FOURTEEN HELMET

Premium street racing helmet with optimal visibility, comfort and built-in protection thanks to its multi-part EPS core. Available in four different shell sizes.

02 APEX II JACKET

Sporty, performance-styled, 2-layer multi-functional textile jacket featuring a breathable, wind and waterproof exterior material.

03 APEX II PANTS

Breathable, waterproof and tapered for the best fit and comfort in all weather conditions. Designed to handle anything the road can throw at you.

04 FAST GT GLOVE

High-quality street gloves with protector on the heel of the hand, finger and knuckles for optimal protection. Doubled mesh material is intelligently placed in risk areas for enhanced coverage.

05 S-MX6 V2 BOOT

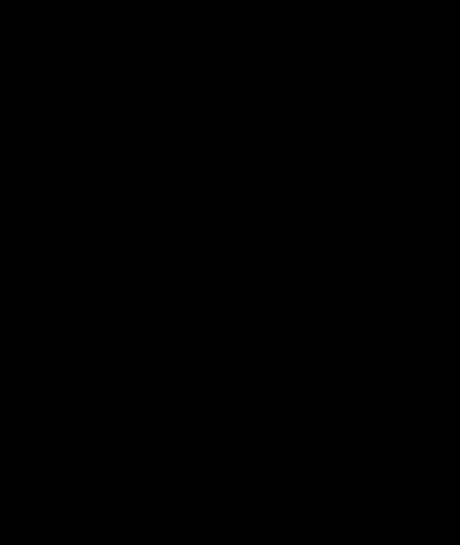
Sporty in style, yet functional in design, the S-MX6 V2 BOOT is equipped with innovative ventilation in the ankle, heel and metatarsus area for comfort all ride long. Quick drying polyamide lining keeps riders dry, while special foam cushioning provides optimum shock absorption in the foot area.



01



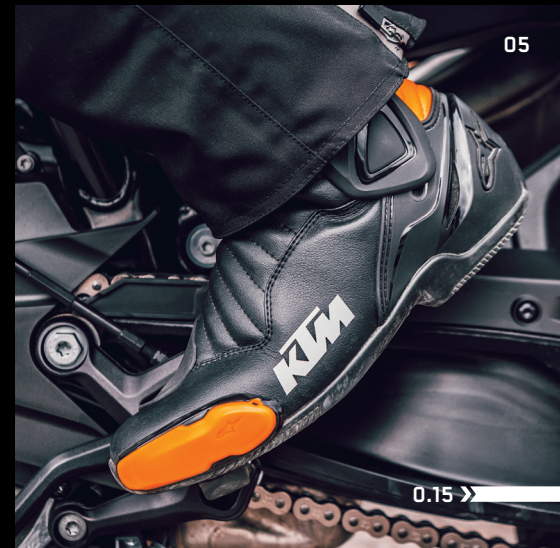
02



03



04

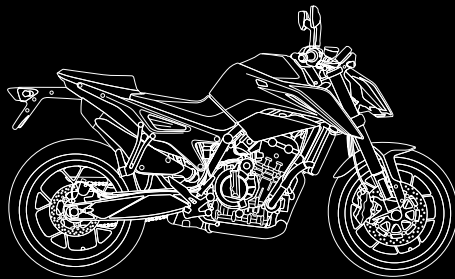


05



ELECTRONIC RIDER AIDS

- » MTC (Motorcycle Traction Control):
cornering sensitive traction control
- » Cornering ABS with Supermoto ABS mode
- » MSR (Motor Slip Regulation)
- » Quickshifter + (Clutchless up and downshifting)
- » 4 Ride modes
- » Track ride mode:
 - » Anti-wheelie off
 - » Spin adjust
 - » Launch control
 - » Throttle control



KTM 790 DUKE

ENGINE (LIQUID COOLED)

| | |
|------------------|---|
| ENGINE TYPE | 2-cylinder, 4-stroke, Parallel Twin/8V/DOHC |
| DISPLACEMENT | 799 cc |
| BORE x STROKE | 88 mm x 65.7mm |
| FUEL CONSUMPTION | 4.4 liters/100 km |

TRANSMISSION

| | |
|-------------|------------------------------------|
| CLUTCH | Cable operated PASC Slipper clutch |
| GEARBOX | 6 gears |
| FINAL DRIVE | 39:75/X-Ring chain |

ELECTRONICS

| | |
|----------------------------------|--|
| ENGINE MANAGEMENT | Bosch EMS with Ride-by-Wire |
| TRACTION CONTROL (disengageable) | MTC (lean angle sensitive, 3-Mode + Track Mode) |
| ABS (disengageable) | Bosch 9.1MP (with Cornering ABS and Supersmoto Mode) |

CHASSIS & BRAKES

| | |
|--------------------------------|--|
| FRAME | CrMo-Steel frame using engine as stressed element, powder coated |
| SUBFRAME | Aluminum, powder coated |
| HANDLEBAR | Aluminum, tapered, Ø 28/22 mm |
| FRONT SUSPENSION/ADJUSTABILITY | WP APEX 43/N/A |
| REAR SUSPENSION/ADJUSTABILITY | WP APEX Monoshock/preload |
| SUSPENSION TRAVEL FRONT/REAR | 140 mm/150 mm |
| WHEELBASE | 1,475 mm ± 15 mm |
| WHEELS FRONT/REAR | Cast aluminum wheels 3.50 x 17"; 5.50 x 17" |
| TIRES FRONT/REAR | 120/70-17", 180/55-17" |
| FRONT BRAKE | 2x radially mounted 4-piston caliper, brake disc Ø 300 mm |
| REAR BRAKE | 2 piston caliper, brake disc Ø 240 mm |

DIMENSIONS & WEIGHT

| | |
|---------------|----------------------------|
| SEAT HEIGHT | 825 mm/32.5 in |
| TANK CAPACITY | approx. 14 L/3.7 gal |
| DRY WEIGHT | approx. 169 kg / 372.6 lbs |

KTM 790 DUKE

#GE



ETDUKED

It takes a very confident, self-assured rider to wrestle a KTM DUKE into submission. But, considering you've made it to the last page, you're clearly ready for the challenge. Why not take the plunge and speak to your dealer about getting onto a KTM DUKE.

BOOK A TEST RIDE NOW!

Easier yet, why not book a test ride online by visiting www.ktm.com/naked and finding a dealer near you. There is an entire realm of DUKE waiting for you.

KTM.COM/NAKED

READY TO RACE
» www.ktm.com

www.kiska.com

LEGAL DISCLAIMER

DO NOT attempt to imitate the illustrated riding scenes. The riders illustrated are professional motorcycle riders. The photos were taken on closed racing circuits or closed roads. KTM warns all motorcyclists to wear protective safety gear and always ride in a responsible manner. Always obey relevant and applicable provisions of road traffic regulations.

Only the homologated versions of the motorcycles promoted in this brochure are suitable for road use. The "warnings and hazard" notices in the owner's manual must be read and obeyed when purchasing a motorcycle and using it for the first time. Some items in the KTM PowerParts product line are not approved for use on public roads in certain circumstances (varies from country to country). Please contact your authorized KTM dealer for further information. The illustrated vehicles may vary in selected features and details from the production models and some illustrations feature optional equipment available at additional cost. All information concerning the scope of supply, appearance, services, dimensions, and weights is non-binding and specified with the condition that mistakes, printing, setting, and typing errors may occur; such information is subject to change without notice. European specification models shown for illustration purposes only. Some accessories and apparel shown may not be available in North America.



2 0200101003NA

© 2020, KTM NORTH AMERICA, INC.

KTM NORTH AMERICA, INC
1119 MILAN AVENUE, AMHERST, OH 44001
38429 INNOVATION COURT, MURRIETA, CA 92563
8701 RUE SAMUEL-HATT, CHAMBLY, QC J3L-6V4
WWW.KTM.COM



KTM POWERWEAR

KTM POWERPARTS



Photos: R. Scheel, H. Mittenbauer, KISKA GmbH