

READY TO RACE
» www.ktm.com

#GETDUKED

KTM 390 DUKE

 CENTRAL FLORIDA
POWERSPORTS
.com

KTM

**YOU DON'T NEED A
ROYAL BLOODLINE TO
BE A COMPLETE
BADASS.**

**YOUR DUKEDOM
STARTS HERE.**



INDEX

0.006	KTM 390 DUKE
0.012	POWERPARTS
0.016	TECHNICAL DATA



**NO MORE
EXCUSES.**



KTM 390 DUKE



R



THE CORNER

OCKET

Maximum riding enjoyment comes as standard on the KTM 390 DUKE. Thanks in part to a torquey single-cylinder engine, nimble handling and state-of-the-art technology, it guarantees a thrilling ride, whether you're fighting your way through the urban jungle or thrashing it out on the track.

390

KTM 390 DUKE

The KTM 390 DUKE engine not only delivers impressive torque and thrilling acceleration, but also real-world usability thanks to its ultra-smooth Ride-by-Wire technology and fuel injection system.

A state-of-the-art chassis, with a lightweight steel trellis frame, makes this bike a real master in the bends. With mass grouped close to the center of gravity, it delivers maximum maneuverability and precision.



SINGLE-CYLINDER POWERPLANT



KTM 390 DUKE

The KTM 390 DUKE boasts huge riding attitude, regardless of which color you choose. One look at its sharp lines and aggressive twin LED headlights and you're hooked by its full-offensive stance. Its READY TO RACE glare definitely grabs attention wherever it goes.



KTM 390 DUKE - BLACK


KTM



KTM 390 DUKE - ORANGE

390

DUKE



POWER PARTS

AMPLIFY YOUR DUKE

Specifically designed alongside the model throughout its development, KTM PowerParts offers riders a fully dedicated range of accessories and components to customize their KTM 390 DUKE and amplify the DUKE experience.

CUSTOMIZED PERFORMANCE

Take your KTM 390 DUKE to the next level on or off the track with KTM PowerParts.



01 AKRAPOVIČ "SLIP-ON LINE"

Gives your DUKE more attitude with a racy look, sporty sound and lighter weight thanks to materials like carbon fiber.

02 ENGINE GUARD

Plastic-coated tubular steel bars attached securely to the frame to help protect all the important parts on your KTM DUKE.



03 REKLUSE RADIUS CLUTCH

Take off and stop in gear without using clutch lever.



04 ERGO SEAT

The foam core ensures long-lasting comfort. Especially on long trips, the difference is clearly perceptible. The optimized shape provides more freedom for the legs and better contact with the motorcycle.



05 PASSENGER SEAT COVER

Racing look in a matter of seconds.



06



07



KTM POWERPARTS

08

**06 TANK BAG**

Using the Quick-Lock Evo System, the TANK BAG can be mounted or removed within seconds. Durable and expandable for increase storage space.

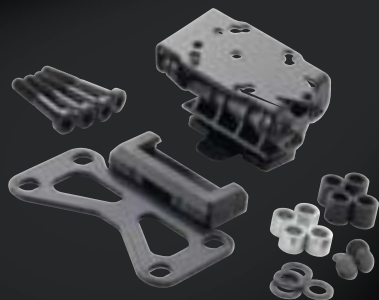
07 SIDE BAG SET

Our newly developed side bags provide sufficient towage for short weekend trips or long journeys. Integrated perfectly into the motorcycle's design, the SIDE BAG SET can be used with a passenger. Carrier required for installation.

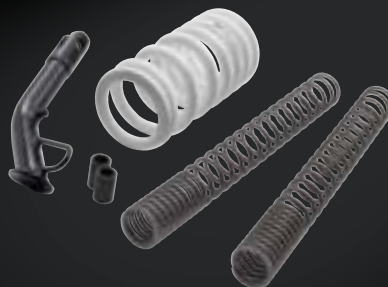
08 BAGGAGE CARRIER

The carrier plate is the base for mounting select rear bag or top cases. Features quick locks for fast and easy access to passenger under-seat storage.

09



10

**09 GPS BRACKET**

This high-quality bracket securely holds your GPS unit on the handlebars for easy access.

10 LOWERING KIT

25 mm lower seat height with unchanged ride dynamics.



11 USB-POWER OUTLET KIT

An easily accessible and convenient way to keep your electronic devices charged on the handlebar. Comes equipped with mounting material and protection cover.

12 ROADLOK

Patented RoadLoK technology provides you with the most effective and sleek option for protecting your KTM from theft.



12

13 FACTORY GRAPHICS KIT

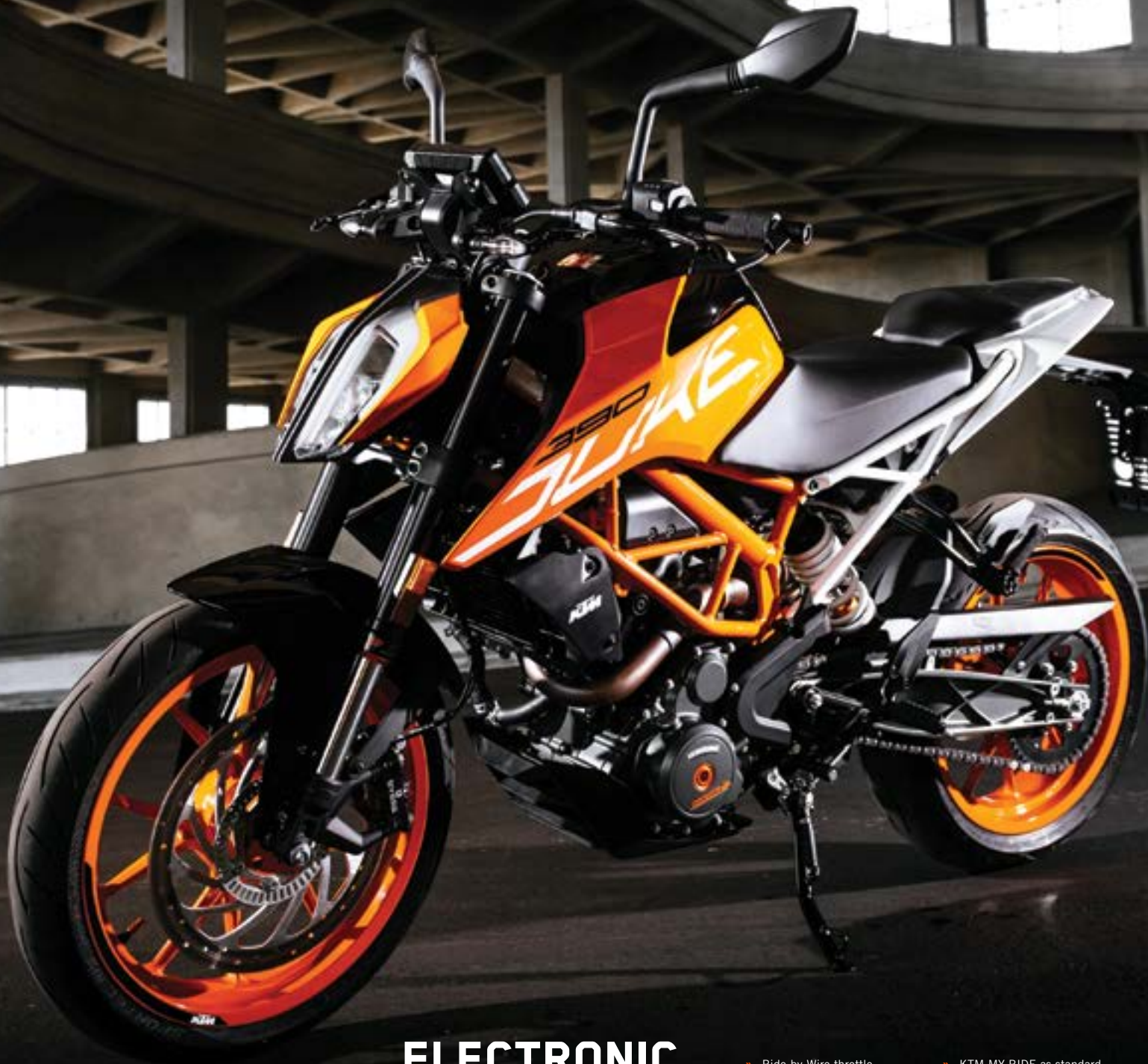
Standard is just not your thing? Customize your own jaw-dropping motorcycle and stand out from the competition



13

> VISIT THE WEBSITE TO VIEW KTM'S ENTIRE POWERPARTS AND POWERWEAR OFFERINGS





ELECTRONIC RIDER AIDS

- » Ride-by-Wire throttle
- » ABS Brakes
- » Supermoto Mode
- » KTM MY RIDE as standard
- » Phone connectivity
- » Audio player

TECHNICAL DATA

KTM NAKED PERFORMANCE

KTM 390 DUKE

ENGINE (LIQUID COOLED)

ENGINE TYPE	Single-cylinder, 4-stroke, 4V/DOHC
DISPLACEMENT	373 cc
BORE x STROKE	89 mm x 60 mm
FUEL CONSUMPTION	3.46 liters/100 km

TRANSMISSION

CLUTCH	PASC slipper clutch, mechanically operated
GEARBOX	6 gears
FINAL DRIVE	30:80/X-Ring chain

ELECTRONICS

ENGINE MANAGEMENT	Bosch EMS with Ride-by-Wire
TRACTION CONTROL (disengageable)	N/A
ABS (disengageable)	Bosch 9.1MP Two Channel (Supermoto ABS)

CHASSIS & BRAKES

FRAME	Steel trellis frame, powder coated
SUBFRAME	Bolt on steel trellis frame, powder coated
HANDLEBAR	Steel, tapered, Ø 26/22 mm
FRONT SUSPENSION/ADJUSTABILITY	WP APEX USD 43/N/A
REAR SUSPENSION/ADJUSTABILITY	WP APEX shock absorber/preload
SUSPENSION TRAVEL FRONT/REAR	142 mm/150 mm
WHEELBASE	1,357 mm ± 15 mm
WHEELS FRONT/REAR	Cast aluminum wheels 3.00 x 17"; 4.00 x 17"
TIRES FRONT/REAR	110/70-17"; 150/60-17"
FRONT BRAKE	4-piston, radially mounted caliper, brake disc Ø 320 mm
REAR BRAKE	Single piston, floating caliper, brake disc Ø 230 mm

DIMENSIONS & WEIGHT

SEAT HEIGHT	830 mm / 32.7 in
TANK CAPACITY	13.4 liters / 3.5 gal
DRY WEIGHT	approx. 149 kg / 328.5 lbs

KTM 390 DUKE

#GE



GET DUKED

It takes a very confident, self-assured rider to wrestle a KTM DUKE into submission. But, considering you've made it to the last page, you're clearly ready for the challenge. Why not take the plunge and speak to your dealer about getting onto a KTM DUKE.

BOOK A TEST RIDE NOW!

Easier yet, why not book a test ride online by visiting www.ktm.com/naked and finding a dealer near you. There is an entire realm of DUKE waiting for you.

KTM.COM/NAKED

READY TO RACE
» www.ktm.com

www.kiska.com

LEGAL DISCLAIMER

DO NOT attempt to imitate the illustrated riding scenes. The riders illustrated are professional motorcycle riders. The photos were taken on closed racing circuits or closed roads. KTM warns all motorcyclists to wear protective safety gear and always ride in a responsible manner. Always obey relevant and applicable provisions of road traffic regulations.

Only the homologated versions of the motorcycles promoted in this brochure are suitable for road use. The "warnings and hazard" notices in the owner's manual must be read and obeyed when purchasing a motorcycle and using it for the first time. Some items in the KTM PowerParts product line are not approved for use on public roads in certain circumstances (varies from country to country). Please contact your authorized KTM dealer for further information. The illustrated vehicles may vary in selected features and details from the production models and some illustrations feature optional equipment available at additional cost. All information concerning the scope of supply, appearance, services, dimensions, and weights is non-binding and specified with the condition that mistakes, printing, setting, and typing errors may occur; such information is subject to change without notice. European specification models shown for illustration purposes only. Some accessories and apparel shown may not be available in North America.



* 20200101002NA *

© 2020, KTM NORTH AMERICA, INC.



KTM NORTH AMERICA, INC
1119 MILAN AVENUE, AMHERST, OH 44001
38429 INNOVATION COURT, MURRIETA, CA 92563
8701 RUE SAMUEL-HATT, CHAMBLY, QC J3L-6V4
WWW.KTM.COM



Photos: R. Scheel, H. Mittenbauer, KISKA GmbH