

READY TO RACE

www.ktm.com

#GETDUKED

KTM 1290 SUPER DUKE R

KTM 1290 SUPER DUKE GT

 **CENTRAL FLORIDA
POWERSPORTS**
[.com](http://www.cfpowersports.com)

KTM

KTM 1290 SUPER DUKE R



ALL NEW CHASSIS. 100% DUKE SPIRIT.

THE BEAST HAS EVOLVED.



The KTM 1290 SUPER DUKE R is now leaner, meaner and more menacing than ever before. This is not a stripped-down sports bike. THE BEAST has been designed to be an extreme Naked bike from the ground up.

Un-faired, unobstructed and unapologetically raw, proudly displaying its intentions in all 1,301 cubic centimeters of its naked glory.

1290

KTM 1290 SUPER DUKE R





LAWNS

OF PHYSICS ARE MADE TO BE BROKEN

At the core of the KTM 1290 SUPER DUKE R is a major chassis overhaul. It boasts three times the torsional rigidity of previous models thanks to an all-new frame and composite subframe. Lightweight, multi-adjustable WP APEX suspension and completely revised geometry make the new KTM 1290 SUPER DUKE R as imposing on the track as it is on the street.

Engineered to be a perfectly usable street bike, with the precision of a hardcore track machine, THE BEAST now has the agility to match its brutality.

KTM 1290 SUPER DUKE R

There's no mistaking that this is the meanest bike on the block. New colors inspired by the RC16 MotoGP bike, purposefully bare bodywork and redesigned ergonomics set the muscled creases of the KTM 1290 SUPER DUKE R off perfectly.



KTM 1290 SUPER DUKE R - BLACK

KTM 1290



KTM 1290 SUPER DUKE R - ORANGE

SUPER DUKE R

KTM 1290 SUPER DUKE GT

The KTM 1290 SUPER DUKE GT takes the interstellar V-twin performance of the KTM 1290 SUPER DUKE R and melds it with the comfort and equipment needed for all-day, two-up charging - but intensified with additional enhancements, refinements and features.



KTM 1290 SUPER DUKE GT - BLACK

KTM 1290



SUPER DUKE GT

0.9 >



POWER PARTS

NEXT LEVEL CUSTOMIZATION

Technical accessories and components were specially developed alongside the DUKE family throughout development for a seamless fit.

GIVE YOUR DUKE MORE PUNCH

Both the KTM 1290 SUPER DUKE GT and R are naturally aggressive in nature. But if you want to up and ante, KTM PowerParts have you covered.

01 AKRAPOVIC KIT "EVOLUTION LINE"

Lightweight thanks to high-grade titanium construction. Includes special engine mapping for greater performance upgrades. Closed course competition use only. Fits 1290 Super Duke R.

02 AKRAPOVIČ "SLIP-ON LINE"

Made from high-grade titanium, the AKRAPOVIC SLIP-ON saves weight, and produces a distinct, sporty sound with great race-inspired looks. Fits 1290 Super Duke R & GT.

03 FACTORY TRIPLE CLAMP

Manufactured from high-strength CNC-machined aluminum, the FACTORY TRIPLE CLAMP is stiffer than the standard triple clamp, and sports a high quality orange anodized finish. Fits 1290 Super Duke R.

04 FOOTPEG SYSTEM

Milled from high-strength aluminum and multi-adjustable for individual settings, more ground clearance and improved boot grip. Fits 1290 Super Duke R.

05 TANK BAG

Mountable tank bag for easily accessible storage. Fits 1290 Super Duke R.

06 WINDSHIELD

This tinted windshield corresponds to the dimensions of the series windshield, but has also been fitted with a special anti-scratch coating. Fits 1290 Super Duke GT.



07



08

**07 ERGO SEAT**

Under the premium quality cover, special 3D structural mesh foam with built in form ensures even pressure distribution and increased seated comfort. Fits 1290 Super Duke R.

08 PASSENGER ERGO SEAT

Offering increased comfort, it is visually a perfect match for the rider's Ergo Seat. Fits 1290 Super Duke R.

09 HEATED ERGO SEAT

Adjustable seat heat settings provide next level comfort for all conditions. The optimized shape provides increased contact with the motorcycle, and an increased seat height of +13 mm. 3D structural mesh ensures even pressure distribution and comfort. Fits 1290 Super Duke GT.

09



10

**10 HEATED ERGO PASSENGER SEAT**

Complementary to the overall appearance of the bike, the passenger seat offers heat options and complete individual comfort. Fits 1290 Super Duke GT.

11 PASSENGER SEAT COVER

Achieve a full racing look from front to back in a matter of seconds, without tools. Fits 1290 Super Duke R.

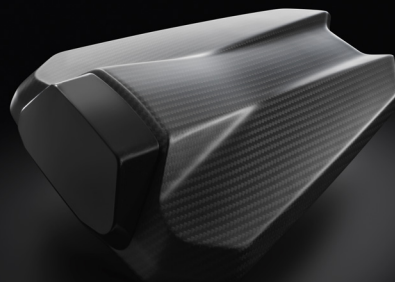
12 CARBON FIBER PASSENGER SEAT COVER

An ideal addition to modify the visual appearance of the bike that is extremely light and easy to install. Fits 1290 Super Duke R.

11



12



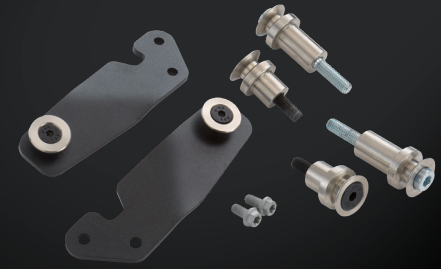
13 SIDE BAG SET

Our newly developed side bags provide sufficient storage for short weekend trips or long journeys. Integrated perfectly into the motorcycle's design, the SIDE BAG SET can be used with a passenger. Carrier required for installation. Fits 1290 Super Duke R.



14 SIDE BAG CARRIER

Innovative side bag carrier: virtually invisible with side bags removed. Fits 1290 Super Duke R.



15 QUICKSHIFTER +

Quickshifter+ allows slick, clutchless up- and downshifts under any load. It reads and responds to your riding, so the shift action is fast when you are, but buttery smooth at half-throttle. Fits 1290 Super Duke R.

16 MOTOR SLIP REGULATION (MSR)

The optionally available (MSR) works in the opposite direction of the MTC. If, due to quick downshifts or abrupt throttle chopping, the engine drag torque is too high, the ride-by-wire system opens the throttle exactly as much as is needed to prevent the rear wheel from drifting. With the help of MSC, this system is also lean-angle sensitive. Fits 1290 Super Duke R & GT.

17 HILL HOLD CONTROL (HHC)

The optional Hill Hold Control (HHC) on the KTM 1290 Super Duke GT prevents the motorcycle from accidentally rolling backwards. It identifies if the bike is on a slope and at a standstill. Fits 1290 Super Duke GT.

18 TRACK PACK

The following functions are available once this has been activated by your authorized KTM dealer:

- "Track" mode
- Anti-wheelie mode off
- Launch control
- Traction control slip adjust
- Throttle response selection
- Closed course competition use only
- Fits 1290 Super Duke R

19 TECH PACK

The TECH PACK includes all software features which are available for the 1290 Super Duke R:

- TRACK PACK
- QUICKSHIFTER+
- MSR
- Adaptive brake light
- Closed course competition use only
- Fits 1290 Super Duke R

13

14

15



16



17



18



RIDE MODES		ENGINE		ABS MODE	
SPORT	RAIN	TRACTION CONTROL	MOTOR SLIP REGULATION	SUPERMOTO	

19



RIDE MODES			
RAIN MODE	SPORT MODE	STREET MODE	TRACK MODE



ELECTRONIC RIDER AIDS

- » Lean-angle sensitive ABS (Cornering ABS) with Supermoto mode
- » MTC (Motorcycle Traction Control)
- » Race On system
- » Cruise control
- » ATIR(Automatic Turn Indicator System)
- » KTM MY RIDE
- » TPMS (Tire Pressure Monitoring System)
- » Ride modes with optional 'Track' ride mode
- » Optional Quickshifter+ (standard on the GT)
- » Optional MSR (Motor Slip Regulation)

KTM 1290 SUPER DUKE PERFORMANCE

KTM 1290 SUPER DUKE R

KTM 1290 SUPER DUKE GT

ENGINE (LIQUID COOLED)

ENGINE TYPE	2-cylinder, 4-stroke, V 75° / 8V / DOHC	2-cylinder, 4-stroke, V 75° / 8V / DOHC
DISPLACEMENT	1,301 cc	1,301 cc
BORE x STROKE	108 mm x 71 mm	108 mm x 71 mm
STARTER	Electric; 12V 11.2Ah	Electric; 12V 12Ah

TRANSMISSION

CLUTCH	PASC slipper clutch, hydraulically operated	PASC slipper clutch, hydraulically operated
GEARBOX	6 gears	6 gears
FINAL DRIVE	17:38/X-Ring chain	17:38/X-Ring chain

ELECTRONICS

ENGINE MANAGEMENT	Keihin EMS with Ride-by-Wire and cruise control, double ignition	Keihin EMS with Ride-by-Wire and cruise control, double ignition
TRACTION CONTROL (disengageable)	MTC (lean-angle sensitive, 3-Mode, Track Mode optional)	MTC (lean-angle sensitive, 3-Mode, Track Mode optional)
ABS	Bosch 9.1MP 2.0 (with Cornering ABS and Supermoto ABS)	Bosch 9ME Combined ABS (with Cornering ABS and Supermoto ABS, disengageable)

CHASSIS & BRAKES

FRAME	Chromium-Molybdenum-Steel frame, powder coated	Chromium-Molybdenum-Steel trellis frame, powder coated
SUBFRAME	Cast aluminum, composite	Chromium-Molybdenum-Steel trellis, powder coated
HANDLEBAR	Aluminum, tapered, Ø 28/22 mm	Aluminum, tapered, Ø 28/22 mm
FRONT SUSPENSION/ADJUSTABILITY	WP APEX 48/compression, rebound, preload	WP Semi-active Suspension USD Ø 48 mm / Semi-active
REAR SUSPENSION/ADJUSTABILITY	WP APEX Monoshock/compression (high & low speed), rebound, hydraulic preload	WP Semi-active Suspension Monoshock / Semi-active, electronic preload
SUSPENSION TRAVEL FRONT/REAR	125 mm/140 mm	125 mm/156 mm
WHEELBASE	1,497 mm ± 15 mm	1,482 mm ± 15 mm
WHEELS FRONT/REAR	Cast aluminum wheels 3.50 x 17"; 6.00 x 17"	Cast aluminum wheels 3.50 x 17"; 6.00 x 17"
TIRES FRONT/REAR	120/70-17"; 200/55-17"	120/70-17"; 190/55-17"
FRONT BRAKE	2x Brembo Stylema 4-piston, radially mounted caliper, brake disc Ø 320 mm	2x Brembo Monobloc 4-piston, radially mounted caliper, brake disc Ø 320 mm
REAR BRAKE	Brembo 2-piston, fixed caliper, brake disc Ø 240 mm	Brembo 2-piston, fixed caliper, brake disc Ø 240 mm

DIMENSIONS & WEIGHT

SEAT HEIGHT	835 mm / 32.8 in	835 mm / 32.8 in
GROUND CLEARANCE	160 mm / 6.3 in	141 mm / 5.6 in
TANK CAPACITY	approx. 16 L / 4.2 gal	23 L / 6.1 gal
DRY WEIGHT	approx. 189 kg / 416.6 lbs	approx. 209 kg / 460.8 lbs

KTM 1290 SUPER DUKE R

#GE



ETDUKED

It takes a very confident, self-assured rider to wrestle a KTM DUKE into submission. But, considering you've made it to the last page, you're clearly ready for the challenge. Why not take the plunge and speak to your dealer about getting onto a KTM DUKE.

BOOK A TEST RIDE NOW!

Easier yet, why not book a test ride online by visiting www.ktm.com/naked and finding a dealer near you. There is an entire realm of DUKE waiting for you.

KTM.COM/NAKED

READY TO RACE
» www.ktm.com

www.kiska.com

LEGAL DISCLAIMER

DO NOT attempt to imitate the illustrated riding scenes. The riders illustrated are professional motorcycle riders. The photos were taken on closed racing circuits or closed roads. KTM warns all motorcyclists to wear protective safety gear and always ride in a responsible manner. Always obey relevant and applicable provisions of road traffic regulations.

Only the homologated versions of the motorcycles promoted in this brochure are suitable for road use. The "warnings and hazard" notices in the owner's manual must be read and obeyed when purchasing a motorcycle and using it for the first time. Some items in the KTM PowerParts product line are not approved for use on public roads in certain circumstances (varies from country to country). Please contact your authorized KTM dealer for further information. The illustrated vehicles may vary in selected features and details from the production models and some illustrations feature optional equipment available at additional cost. All information concerning the scope of supply, appearance, services, dimensions, and weights is non-binding and specified with the condition that mistakes, printing, setting, and typing errors may occur; such information is subject to change without notice. European specification models shown for illustration purposes only. Some accessories and apparel shown may not be available in North America.



2 0200101005NA

© 2020, KTM NORTH AMERICA, INC.



KTM NORTH AMERICA, INC
1119 MILAN AVENUE, AMHERST, OH 44001
38429 INNOVATION COURT, MURRIETA, CA 92563
8701 RUE SAMUEL-HATT, CHAMBLY, QC J3L-6V4
WWW.KTM.COM



KTM POWERWEAR

KTM POWERPARTS



Photos: R. Scheel, H. Mittenbauer, KISKA GmbH