

# SPEAKMAN®

## Laboratory Countertop Mounted Eyewash

SE-570

SPECIFICATION



### FEATURES:

- Countertop mounted
- (2) yellow, plastic, aerated with flip-top dust caps
- ¼ turn ceramic Perfect® valve
- Swing activated
- ½ in. NPT female inlet
- 3.06 gpm @ 30 psi
- Universal emergency sign included

### COMPLIANCE:

- Certified to ANSI/ISEA Z358.1

### OPTIONS:

ADD SUFFIX TO MODEL #

- Left hand operation  LH
- In-line strainer for ½ in. IPS piping  ILS
- Thermostatic mixing valve  SE-TW-EW

### WARRANTY:

- 3 year limited

SEE REVERSE FOR ROUGH-IN DIMENSIONS

THIS SPACE FOR ARCHITECT/ENGINEER APPROVAL.

---

# SPEAKMAN®

400 ANCHOR MILL ROAD | NEW CASTLE, DE 19720  
P: 800-537-2107 | F: 800-977-2747  
WWW.SPEAKMANCOMPANY.COM

REVISION DATE: SEPTEMBER 2014



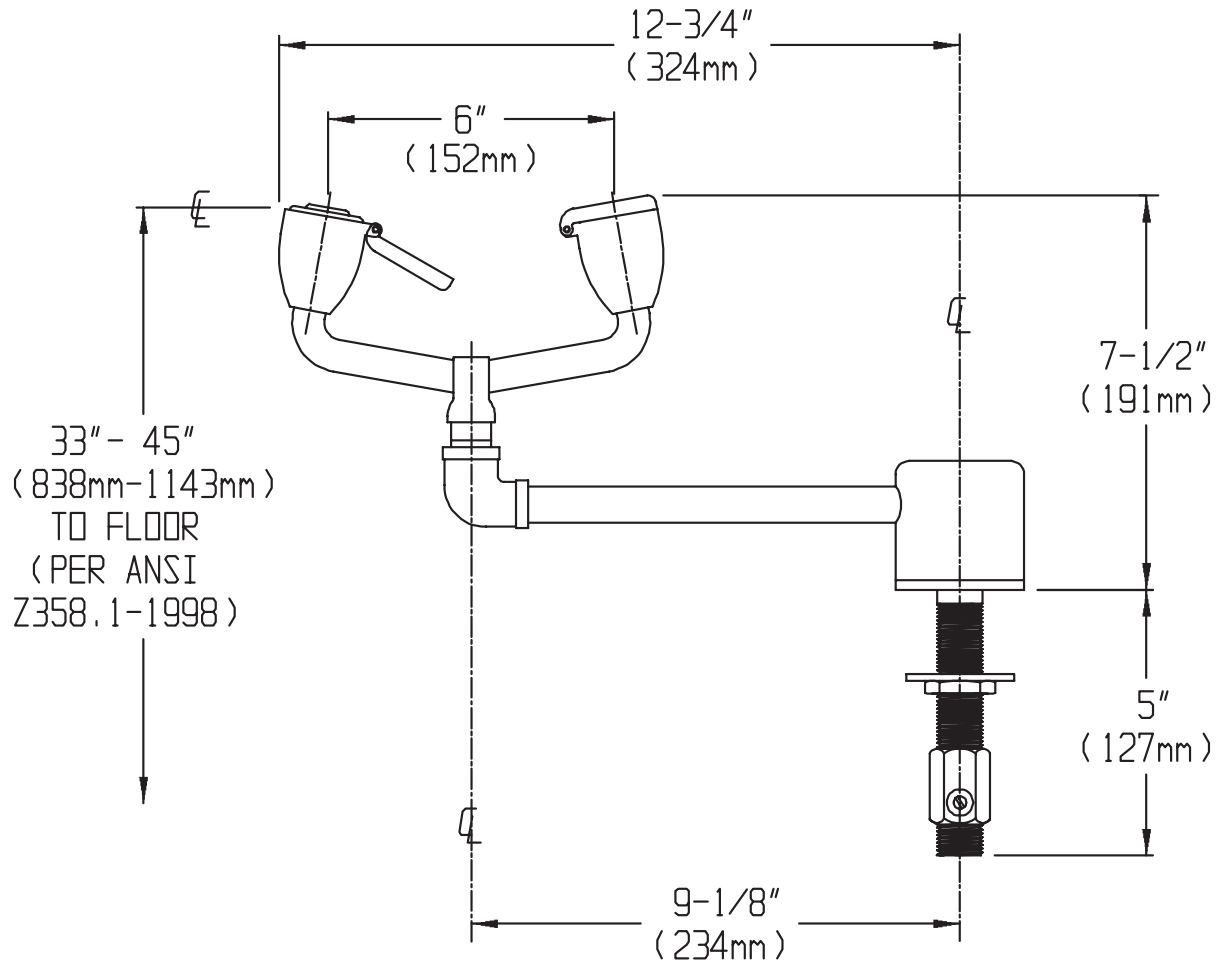
Management Systems  
Registered to ISO 9001

615

# SPEAKMAN®

## Laboratory Countertop Mounted Eyewash SE-570

SPECIFICATION



NOTE: 1. All dimensions are in inches (millimeters) unless otherwise specified and are subject to change without notice.

THIS SPACE FOR ARCHITECT/ENGINEER APPROVAL.

# SPEAKMAN®

400 ANCHOR MILL ROAD | NEW CASTLE, DE 19720  
P: 800-537-2107 | F: 800-977-2747  
WWW.SPEAKMANCOMPANY.COM



Management Systems  
Registered to ISO 9001

REVISION DATE: SEPTEMBER 2014