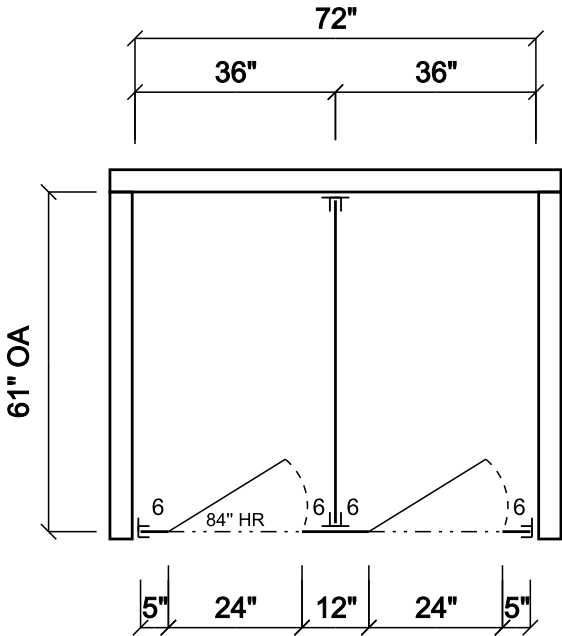

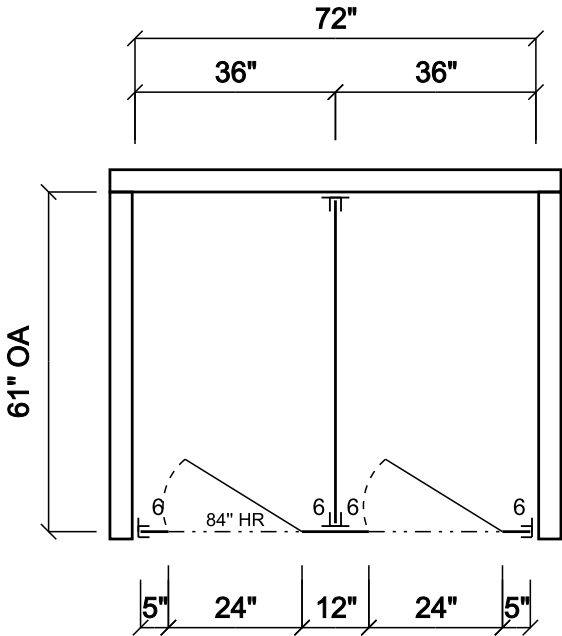




Job Specs	Stall Mounting Style: Floor Mounted Headrail Braced	Pilaster Height: 82.75"	Material Option: Hiny Hider -Standard (HDPE) Color: Unknown			
Bracket Type: Aluminum Stirrups Shoe Type: Stainless		Hinge Type: 8" Alum. Wrap Around, 2-per Door Door Hrdw Type: Aluminum (Emergency Access)		Pencil Slot: No	Heat-sinc: No Fastener: 2 1/2"	
Room Name: C3060429		55" High Doors,		55" Total Panel Height		
<div></div>						
<div> SCRANTON PRODUCTS</div> <div>801 E COREY ST. SCRANTON, PA. 18505 Phone (570)348-0997</div>		<div>CUSTOMER NAME: SUSTAINABLE SUPPLY</div> <div>PROJECT NAME: Urinal Screen</div>		<div>SCALE: NTS</div> <div>DATE: 9/12/2019</div>	<div>SERIAL #: C-673413 - DWG C-721412 - Room</div> <div>REVISION #: 2 SO#</div> <div>DRAWN BY: Chad Parmenter</div>	<div>Standard Notes:</div> <div>1. Doors larger than 30" are to be set to the closed position. 2. Where pilasters and panels meet there is a 1/2" space. 3. Where pilasters and/or panels meet a wall there is a 1" space. 4. Headrail shall be supplied in 12" increments, ranging from 36" to 84". 5. Pilasters over 24" will receive a doghouse detail.</div>

Job Specs	Stall Mounting Style: Floor Mounted Headrail Braced	Pilaster Height: 82.75"	Material Option: Hiny Hider -Standard (HDPE) Color: Unknown				
Bracket Type: Aluminum Stirrups Shoe Type: Stainless		Hinge Type: 8" Alum. Wrap Around, 2-per Door Door Hrdw Type: Aluminum (Emergency Access)	Pencil Slot: No	Heat-sinc: No Fastener: 2 1/2"			
Room Name: C3060429		55" High Doors, 55" Total Panel Height					
<div></div>							
<div> <div>SCRANTON PRODUCTS</div></div>		<div> <div>HINY HIDERS</div></div>		<div>CUSTOMER NAME: SUSTAINABLE SUPPLY</div> <div>PROJECT NAME: Urinal Screen</div>	<div>SCALE: NTS</div> <div>DATE: 9/12/2019</div>	<div>SERIAL #: C-673413 - DWG C-721415 - Room</div> <div>REVISION #: 2</div> <div>SO# DRAWN BY: Chad Parmenter</div>	<div>Standard Notes:</div> <div>1. Doors larger than 30" are to be set to the closed position. 2. Where pilasters and panels meet there is a 1/2" space. 3. Where pilasters and/or panels meet a wall there is a 1" space. 4. Headrail shall be supplied in 12" increments, ranging from 36" to 84". 5. Pilasters over 24" will receive a doghouse detail.</div>
801 E COREY ST. SCRANTON, PA. 18505		Phone (570)348-0997					

COLOR & TEXTURE OPTIONS

Textures



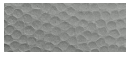
ROTARY BRUSHED

RB



ORANGE PEEL

OP



HAMMERED

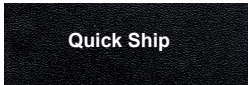
H



EX

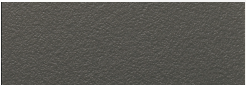
EX

TRADITIONAL COLOR COLLECTION



BLACK

OP



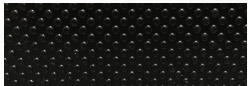
SHALE

OP



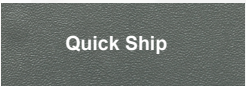
GLACIER GREY

OP



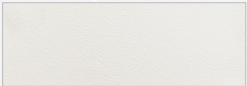
BLACK

EX



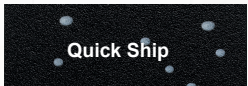
CHARCOAL GREY

OP



WHITE

OP



PAISLEY

OP



GREY

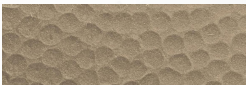
OP

METALLIC COLOR COLLECTION



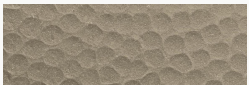
STAINLESS

H



BRONZE

H



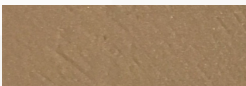
NICKEL

H



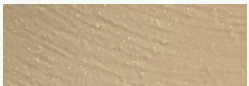
STAINLESS

RB



BRONZE

RB



NICKEL

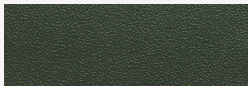
RB



STAINLESS

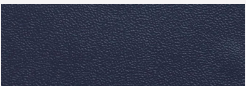
EX

BOLD COLOR COLLECTION



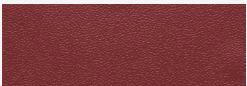
HUNTER GREEN

OP



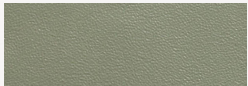
BLUEBERRY

OP



BURGUNDY

OP



FOSSIL

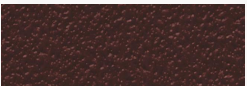
OP



FRENCH BLUE

OP

WARM TONE COLOR COLLECTION



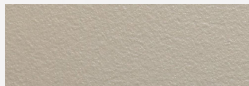
MAHOGANY

OP



SANDSTONE

OP



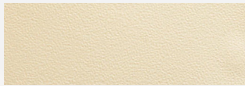
CONCRETE

OP



DESERT BEIGE

OP



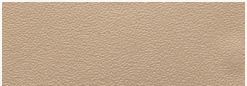
LINEN

OP



SANDCASTLE

OP



MOCHA

OP

CUSTOM COLORS AVAILABLE UPON REQUEST

Color matching is limited by printing process. Actual samples are available and recommended prior to color selections.

*Special orders require extended lead times.
Minimum order requirements may apply.