

**Let's  
Get  
Serious  
About  
What's In  
Your  
Bathroom.**



**SCRANTON  
PRODUCTS**  
DESIGNED TO BE WORRY-FREE

# IT'S TIME TO FACE THE FACTS

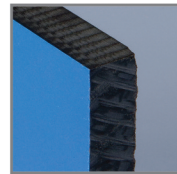
Scranton Products® bathroom partitions provide one of the longest life cycles in the industry. Constructed from premium American-made 1" solid HDPE with a homogenous color throughout, Scranton Products® HDPE plastic resists dents, scratches, corrosion, graffiti and mildew – and will absolutely never rust. The facts speak for themselves. If you're serious about investing in a worry-free product that will save you time and money, Scranton Products® HDPE is the smart choice.

## GET SERIOUS ABOUT MATERIALS

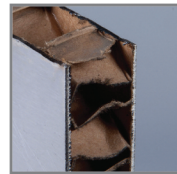
There are many choices when choosing a material for your bathroom partitions. Before making a decision, take a closer look at what's inside. With the exception of Scranton Products® solid plastic HDPE, all of the cores below are subject to mold. Solid plastic HDPE will not absorb moisture, resists mold and mildew, and is warranted for 25 years.



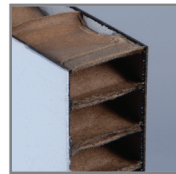
**Plastic Laminate**  
Particleboard core



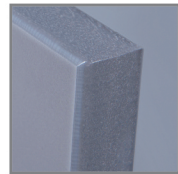
**Phenolic (Black Core)**  
Resin-impregnated kraft paper core



**Stainless Steel**  
Honeycomb core made of cardboard



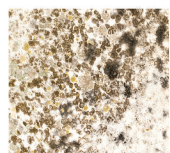
**Baked Enamel**  
Honeycomb core made of cardboard



**SP's Solid HDPE**  
Solid plastic with homogenous color throughout

## GET SERIOUS ABOUT HEALTH

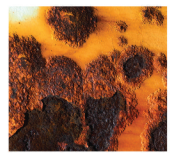
Scranton Products® bathroom partitions are fully power washable and steam cleanable, eliminating the need for harmful chemical cleaners. Because they never need painting, Scranton Products® HDPE partitions deliver no VOC emissions and are GREENGUARD Gold Certified. What's more, they resist bacteria, odors, moisture and mildew.



**NO MOLD GROWTH**  
Impermeable to moisture, HDPE's non-porous surface does not support the growth of mold and mildew.

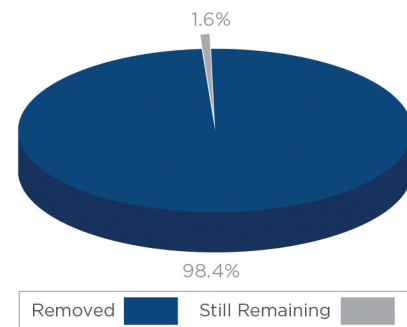


**NO PAINTING**  
Scranton Products® bathroom partitions are solid color throughout and will not chip so they never require painting.



**CLEANER, HEALTHIER BATHROOMS**  
When moisture comes in contact with metal, rust begins to form, becoming a breeding ground for germs.

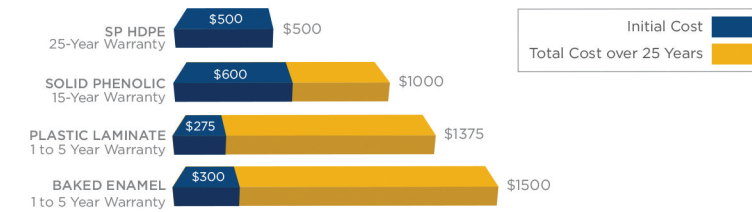
**NATURALLY GERM RESISTANT**  
After 24 hours, 98.4% of MRSA bacteria died off the surface of HDPE plastic without the use of any cleaning solutions.



Testing conducted by SiTU Biosciences LLC, by the ISO 22196 methods.

## GET SERIOUS ABOUT COSTS

### TOTAL PRODUCT COST VS. LENGTH OF WARRANTY



The total cost over 25 years is based on replacing partitions at the end of their warranty period.

WHAT IS THE TRUE COST OF YOUR PARTITIONS OVER 25 YEARS?

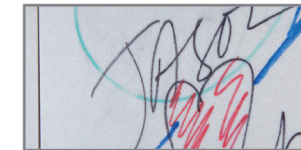
## GET SERIOUS ABOUT MAINTENANCE

### NO PAINTING

Scranton Products® partitions are solid color throughout and will never chip so they never require painting.

### EASY GRAFFITI REMOVAL

Graffiti can be easily wiped clean with a common non-abrasive cleaner.

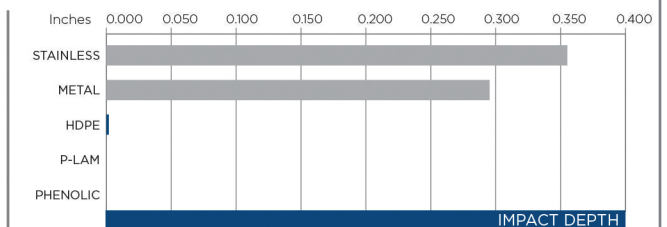


### SCRATCH RESISTANT

Since Scranton Products® HDPE is formulated with a solid color throughout, scratches are difficult to see and can be easily repaired.

## STRENGTH / IMPACT AND DENT RESISTANCE TEST RESULTS

An impact test conducted following ASTM standards showed that Scranton Products® solid HDPE has 59 times greater resistance to impacts when compared to metal.



## GET SERIOUS ABOUT SUSTAINABILITY

- Made from recycled materials
- Improved air quality
- Contains 25-100% post-industrial recycled material
- Available with 100% post-consumer content
- 100% recyclable
- Factory responsible recycling
- Lead points



GREENGUARD Gold is a registered certification mark used under license through the GREENGUARD Environmental Institute.



THE COMPLETE LINE OF  
SCRANTON PRODUCTS

BATHROOM PARTITIONS  
LOCKERS  
LOCKER ROOM BENCHES  
SHOWER CUBICLES  
DRESSING COMPARTMENTS  
VANITIES

Scranton Products  
801 E. Corey Street  
Scranton, PA 18505  
800.445.5148  
Fax: 800.551.6993  
info@scrantonproducts.com  
scrantonproducts.com



**SCRANTON  
PRODUCTS**  
DESIGNED TO BE WORRY-FREE

 **ECLIPSE  
PARTITIONS**

 **HINY  
HIDERS.**  
SANTANA-CORTEC

 **RESISTALL  
PARTITIONS.**

 **TUFFTEC  
LOCKERS.**

 **DURALIFE  
LOCKERS.**