



INSTALLATION, OPERATION & MAINTENANCE INSTRUCTIONS

1455 Kleppe Lane ♦ Sparks, NV 89431-6467 ♦ (775) 359-4712 ♦ Fax (775) 359-7424
E-mail: haws@hawscos.com ♦ website: www.hawscos.com

No. 2080138(15)

Model 8164 Shower

NOTE TO INSTALLER: Please leave this information with the Maintenance Department.

LIMITED WARRANTY

HAWS warrants that this specific product is guaranteed against defective material or poor workmanship for a period of **one year from date of shipment**. HAWS liability under this warranty shall be discharged by furnishing without charge F.O.B. HAWS Factory any goods, or part thereof, which shall appear to the Company upon inspection to be of defective material or not of first class workmanship, provided that claim is made in writing to Haws within a reasonable period after receipt of the product. Where claims for defects are made, the defective part or parts shall be delivered to the Company, prepaid, for inspection. HAWS will not be liable for the cost of repairs, alterations or replacements, or for any expense connected therewith made by the owner or his agents, except upon written authority from HAWS, Sparks, Nevada. HAWS will not be liable for any damages caused by defective materials or poor workmanship, except for replacements, as provided above. Buyer agrees that Haws has made no other warranties either expressed or implied in addition to those above stated, except that of title with respect to any of the products or equipment sold hereunder and that HAWS shall not be liable for general, special, or consequential damages claimed to arise under the contract of sale.

The emergency equipment manufactured by HAWS is warranted to function if installation and maintenance instructions provided are adhered to. The units also must be used for the purpose for which they were intended. This product is intended to supplement first-aid treatment. Due to widely varying conditions, Haws cannot guarantee that the use of this emergency equipment will prevent serious injury or the aggravation of existing or prior injuries.

**NO OTHER WARRANTIES EXPRESSED OR IMPLIED ARE AUTHORIZED,
PROVIDED OR GIVEN BY HAWS.**

**SHOULD YOU EXPERIENCE DIFFICULTY WITH THE INSTALLATION OF THIS
MODEL PLEASE CALL:**

TECHNICAL SUPPORT: 1-800-766-5612

FOR CUSTOMER SERVICE: 1-888-640-4297

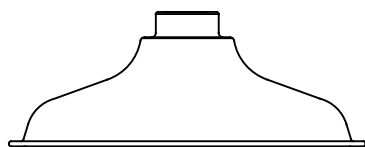
LOCATION OF UNIT: The Model 8164 Emergency Shower should be installed in close proximity to potential accident areas. It should be clearly identified free from obstructions and easy to access.

SUPPLY LINE: The minimum recommended line size is 1" IPS with 30-90 psi (2-6 ATM) flowing pressure. Where sediment or mineral content is a problem, an inlet filter is recommended.

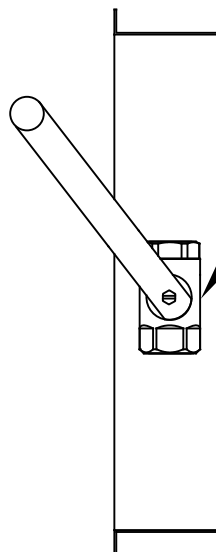
PLUMBING CONNECTIONS: Inlet supply is female 1" IPS.

TROUBLESHOOTING	
PROBLEM	REPAIR CHECKLIST
1. No flow.	1. Check the main shut-off valve.
2. Insufficient water flow at the showerhead.	2. a. Verify minimum 30 psi (2 ATM) flowing supply line pressure. b. Probable clogging of flow control inside showerhead. Unscrew showerhead off of elbow and clean rubber flow control.

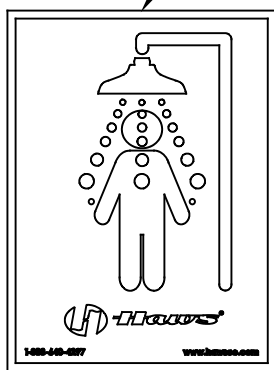
For more information about Haws products, see our website: www.hawesco.com



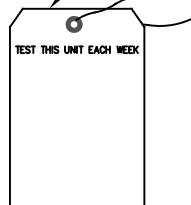
SP829HPS



SHOWER VALVE
ASSEMBLY



SP177 SHOWER SIGN




SP170 TEST TAG

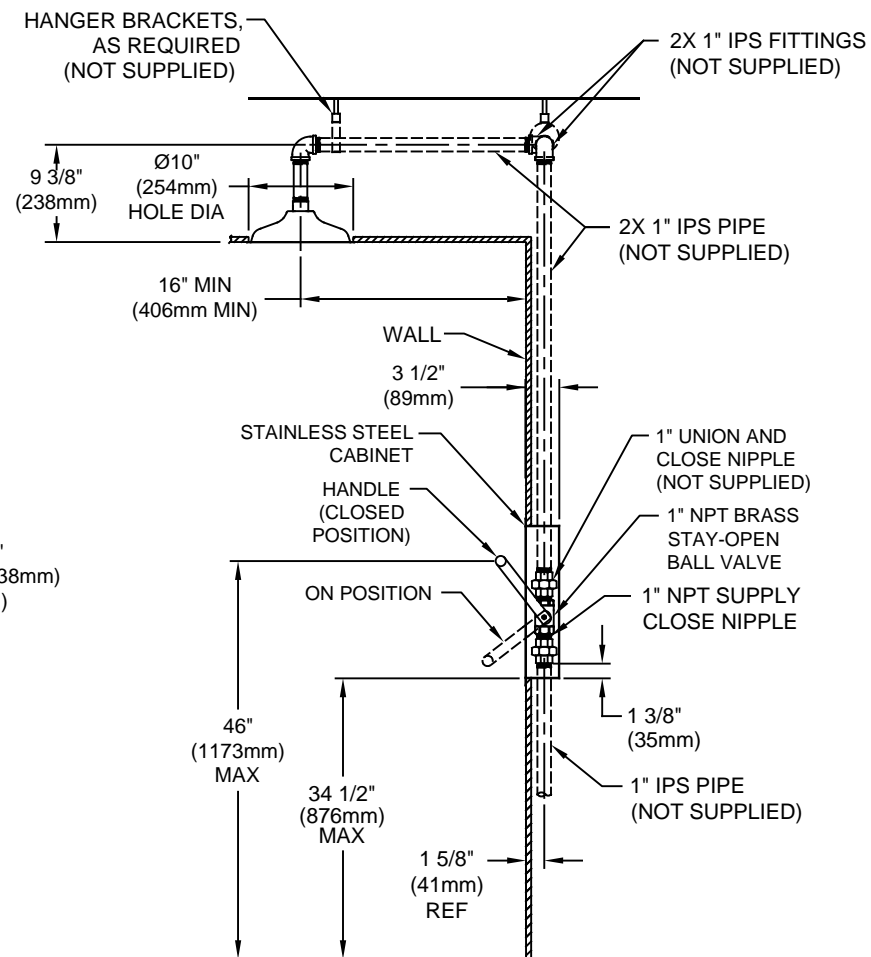
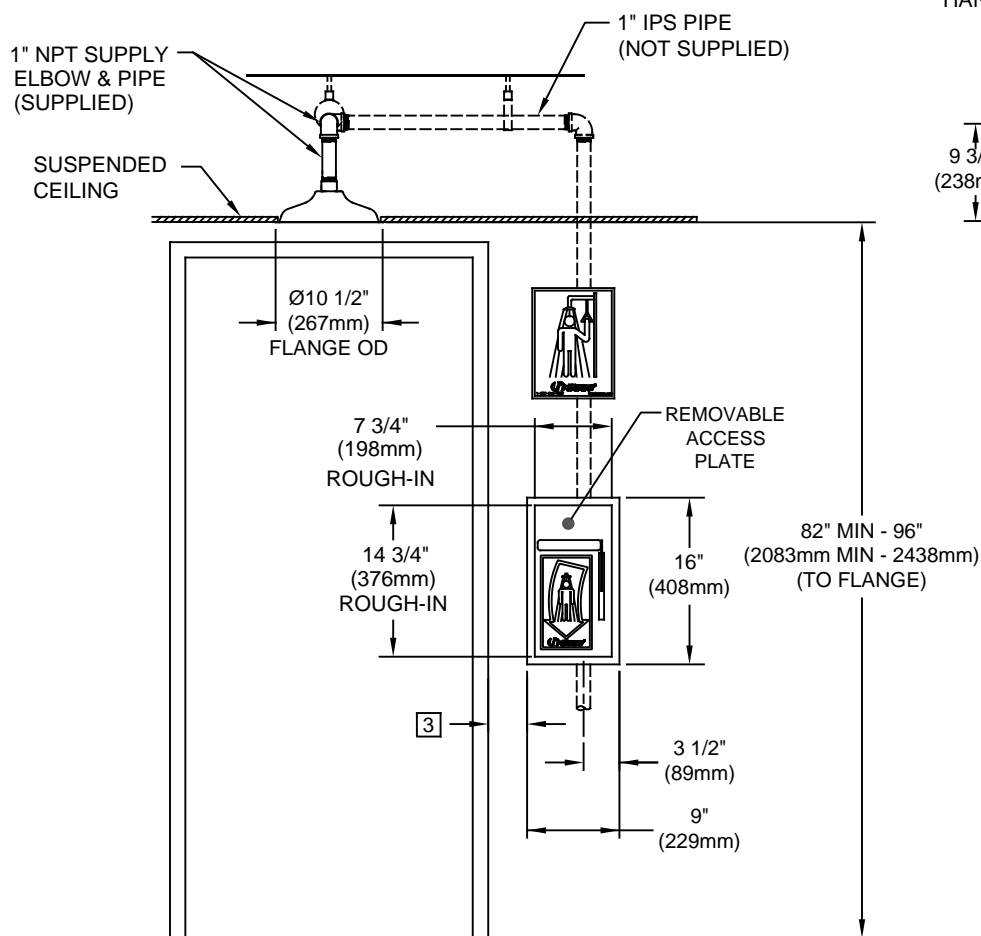


1" X 6-1/2"
HI POLISH NIPPLE
0003516457

PARTS BREAKDOWN

WHEN ORDERING PARTS PLEASE SPECIFY MODEL NUMBER.

			Haws® 1455 KLEPPE LANE SPARKS, NEVADA 89431 (775) 359-4712 FAX (775) 359-7424 E-MAIL: HAWS@HAWS.CO.COM WEBSITE: WWW.HAWS.CO.COM			PART NUMBER
						0002080138
ECN NO.	REVISED PER	BY	MODEL(S)			REVISION
DRAWN	DATE	CHKD				15
DO	5/27/98	VWC	8164 SHOWER			
APPROVED	DATE					
FV	02/16/18		SCALE: NA DRAWING TYPE: PARTS BREAKDOWN			SHEET 1 OF 1



NOTES:

1. WHEN INSTALLING THIS UNIT, LOCAL, STATE, OR FEDERAL CODES SHOULD BE ADHERED TO FOR INSTALLATION DIMENSIONS (LOCATIONS), WASTE AND SUPPLY REQUIREMENTS OTHER THAN SHOWN.
2. TO COMPLY WITH ANSI Z358.1-2014 FOR EMERGENCY SHOWER EQUIPMENT:
 - SHOWER SHALL BE POSITIONED SUCH THAT SHOWER HEAD IS NO LESS THAN 82" (2083mm) AND NO GREATER THAN 96" (2438mm) FROM SURFACE ON WHICH USER STANDS.
 - SHOWER SPRAY PATTERN SHALL HAVE A MINIMUM DIAMETER OF 20" (508mm) AT 60" (1524mm) ABOVE SURFACE ON WHICH USER STANDS, AND CENTER OF SPRAY PATTERN SHALL BE LOCATED NO LESS THAN 16" (406mm) FROM NEAREST OBSTRUCTION.

3 INSTALL STAINLESS STEEL CABINET AS CLOSE TO DOOR JAM AS POSSIBLE.

4. DIMENSIONS MAY VARY BY $\pm 1/2"$ (13 mm).

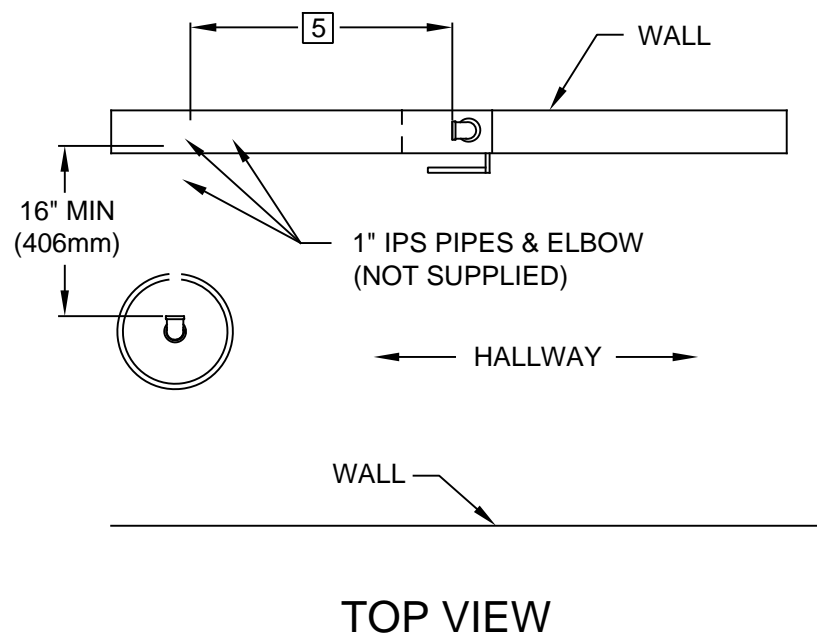
(NOTES CONTINUED ON SHEET 2.)

**SEE SHEET 2 FOR ALTERNATE
"HANG DOWN" INSTALLATION**

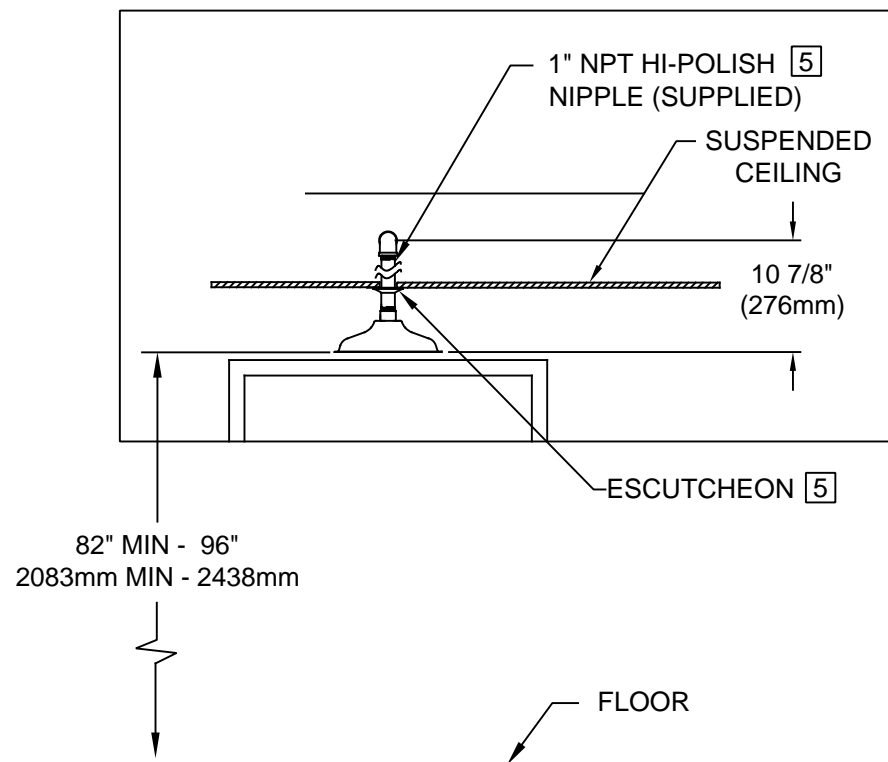


1455 KLEPPE LANE
SPARKS, NEVADA 89431
(775) 359-4712 FAX (775) 359-7424
E-MAIL: HAWS@HAWSCO.COM
WEBSITE: WWW.HAWSCO.COM

ECN NO.		REVISED PER		BY:		MODEL(S)		PART NUMBER	
ECN: 5279		VWC		VWC				0002080138.D	
DRAWN:		DATE:		CHK'D:		8164 SHOWER		REVISION	
DO		3/9/00		VWC				15	
APPROVED:		DATE:		SCALE: NA		DRAWING TYPE:		INSTALLATION	
FV		02/16/18						SIZE: A	
								SHEET 1 OF 2	



TOP VIEW



[5] ALTERNATE "HANG DOWN" INSTALLATION

NOTES: (CONTINUED FROM SHEET 1)

- [5] FOR ALTERNATE "HANG DOWN" INSTALLATION OF SHOWER HEAD PERFORM THE FOLLOWING STEPS:
A) SWAP NIPPLE, 1" NPT X 5" LONG, FOR NIPPLE, HI-POLISH, 1" NPT X 6 1/2" LONG (SUPPLIED).
B) USE CEILING ESCUTCHEON FOR 1" NPT PIPE.

						1455 KLEPPE LANE SPARKS, NEVADA 89431 (775) 359-4712 FAX (775) 359-7424 E-MAIL: HAWS@HAWS.CO.COM WEBSITE: WWW.HAWS.CO.COM		
ECN NO.	REVISED PER	BY:	MODEL(S)			PART NUMBER 0002080138.D REVISION 15		
ECN: 5279		VWC						
DRAWN:	DATE:	CHK'D:	8164 SHOWER					
DO	3/9/00	VWC						
APPROVED:	DATE:		SCALE: NA DRAWING TYPE: INSTALLATION			SIZE: A SHEET 2 OF 2		
FV	02/16/18							