



ELX-3 Express® Lavatory System – ELX-Series

- Seamless, one-piece lavatory is a cost effective upgrade to traditional fabricated counters with seams
- With fewer plumbing connections, installs faster than traditional counters and sinks
- Easy-to-clean, linear design minimizes flat areas where water could puddle
- With or without coved backsplash
- Integral/serviceable overflows
- 1 person access panel install and removal
- ADA and TAS compliant
- Available in a variety of Terreon® solid surface colors
- Compatible with Verge™ deck-mounted soap dispensers and faucets

Specifications

Accommodates one, two, or three users. These units handle washroom traffic quickly and economically, while providing each user with their own personal space. Robust design meets or exceeds the ANSI load requirements. This system can be mounted at different heights to accommodate hand washing for adults, children, young children and those with disabilities. Search CSI 3-part specification on bradleycorp.com for CSI spec format.

Product Compliance

Listed by IAPMO R&T to

- Uniform Plumbing Code (UPC)
- National Plumbing Code of Canada
- International Plumbing Code (IPC)
- IGC 156 and the requirements of CSA B45.5 / IAPMO Z124 and ASME A112.18.1 / CSA B125.1



Complies with

- ADA
- ICC/ANSI 117.1
- TAS
- NSF/ANSI 372



Serves the American Disabilities Act and ICC/ANSI 117.1 guidelines, citations 306, 308, 309.4, 606.4, 606.5 when installed according to these requirements.

Consult local codes and standards.



This plumbing fixture is designed for hand washing only. It is not intended to dispense water for human consumption through drinking or for preparation of food or beverages.

Listed by UL Environment to

- GreenGuard Gold



Shown with optional accessories

Construction

Bowl

Constructed of Terreon, a densified solid surface material composed of a bio-based resin, or TerreonRE®, a densified solid surface material composed of a bio-based resin and preconsumer recycled granules. Terreon and TerreonRE are resistant to chemicals, stains, burns and impact. Surface damage can be easily repaired with every day cleansers or fine grit abrasives. Terreon and TerreonRE are GREENGUARD® certified as low-emitting materials.

Support Bracket

Bracket design allows for flexible stud or wall blocking anchor locations. Eliminates the need for in-wall carriers. IAPMO certified to meet or exceed ANSI load requirements.

Access Panel Enclosure

Unique access panel design pivots on stainless steel brackets which easily allows for one person installation and removal. The access panel is composed of high impact polymer so it will not chip, peel, or flake. The fully enclosed vandal resistant design eliminates the need for plumbing wrap.

Strainer and Drain Assembly

System comes complete with plungable 300 series stainless steel strainers, tailpiece connection and your choice of a combined drain rough-in with one drain connection or individual drain rough-in connections.

Vandal Resistance

Water supplies, valving, waste assembly and other optional items are completely concealed within the high impact access panel. Terreon bowl material is also highly vandal resistant and repairable.

Faucets*

Choose from our 0.35 gpm (1.3 Lpm) or 0.50 gpm (1.9 Lpm) Verge Faucets – Crestt, Metro, Linea, or Zen Series. 4" centerset and centershank faucet drillings are available for faucets by others.

Soap Dispensers*

Choose from our Verge Deck-Mounted Soap Dispensers – Crestt, Metro, Linea, or Zen Series. Dispensers can be arranged as personal soap (dispensers next to each faucet) or shared soap (dispensers in between faucets). See page 2 for drilling locations. Soap drillings available for soap by others.

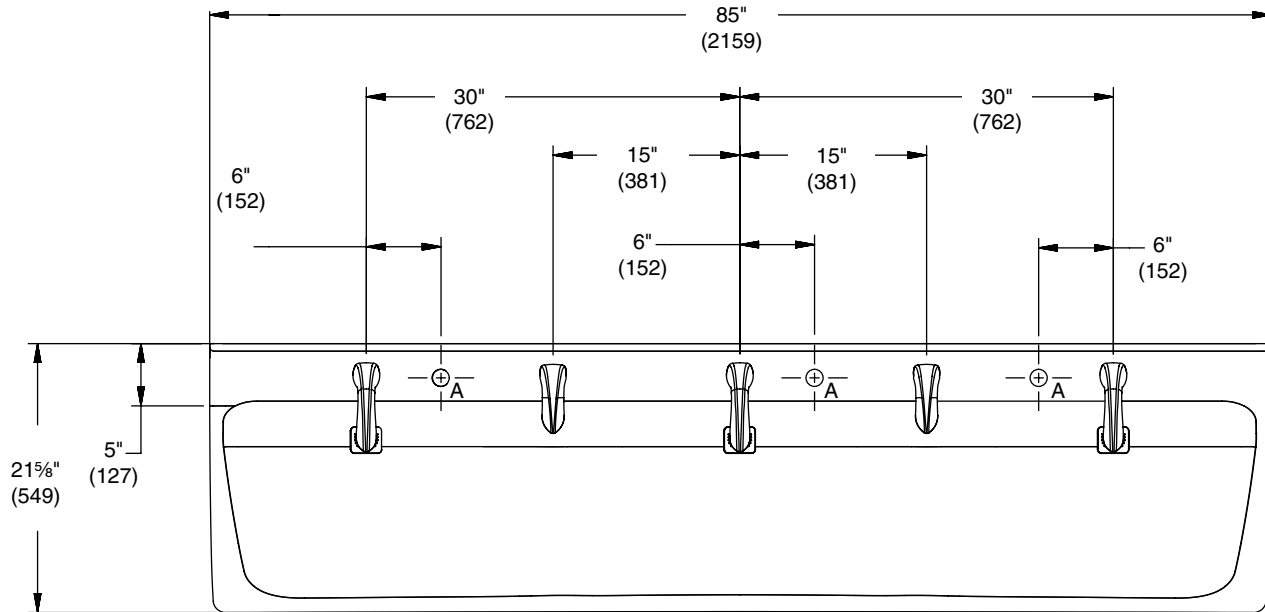
*For primary/elementary school applications, Bradley recommends hands free activation for soap dispensers and faucets in lieu of manual activation to ensure proper reach for kindergarten students.



ELX-3 Express® Lavatory System – ELX-Series

Top View (shown with shared soap option)

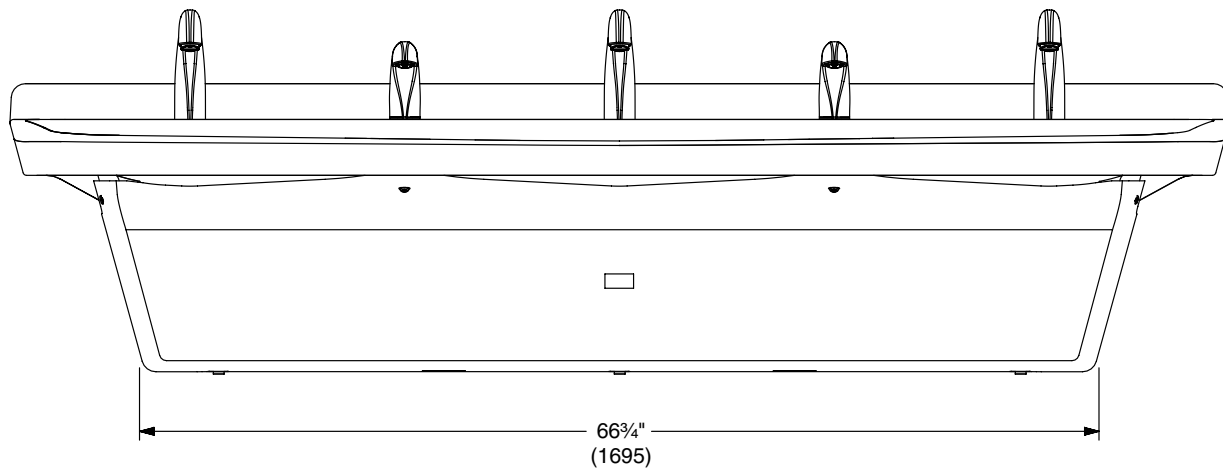
(mm)



A = personal soap locations

Front View (shown with coved backsplash option)

(mm)

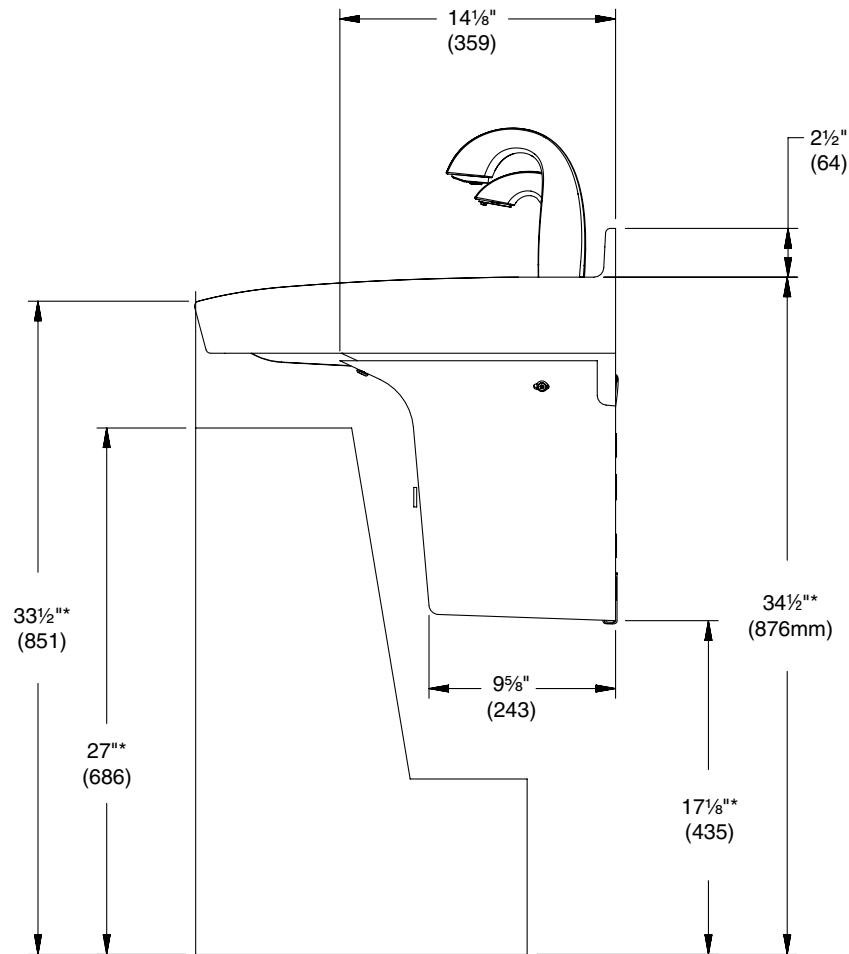




ELX-3 Express® Lavatory System – ELX-Series

Side View (shown with Crestt Series Faucet and Soap)

(mm)



Rim Height	Vertical Height Adjustments	Fixture Style	Notes
$33\frac{1}{2}"$	No Adjustment	Standard ADA & TAS	At least one basin must meet dimensional requirements and have proper reach, knee, and toe clearance.
$30\frac{1}{2}"$	*Subtract 3"	Juvenile ADA & TAS	At least one basin must meet dimensional requirements and have proper reach, knee, and toe clearance.
26"	*Subtract $7\frac{1}{2}"$	Junior	For use by younger children where ADA guidelines are not a concern.



ELX-3 Express® Lavatory System – ELX-Series

Structural Rough-Ins

(mm)

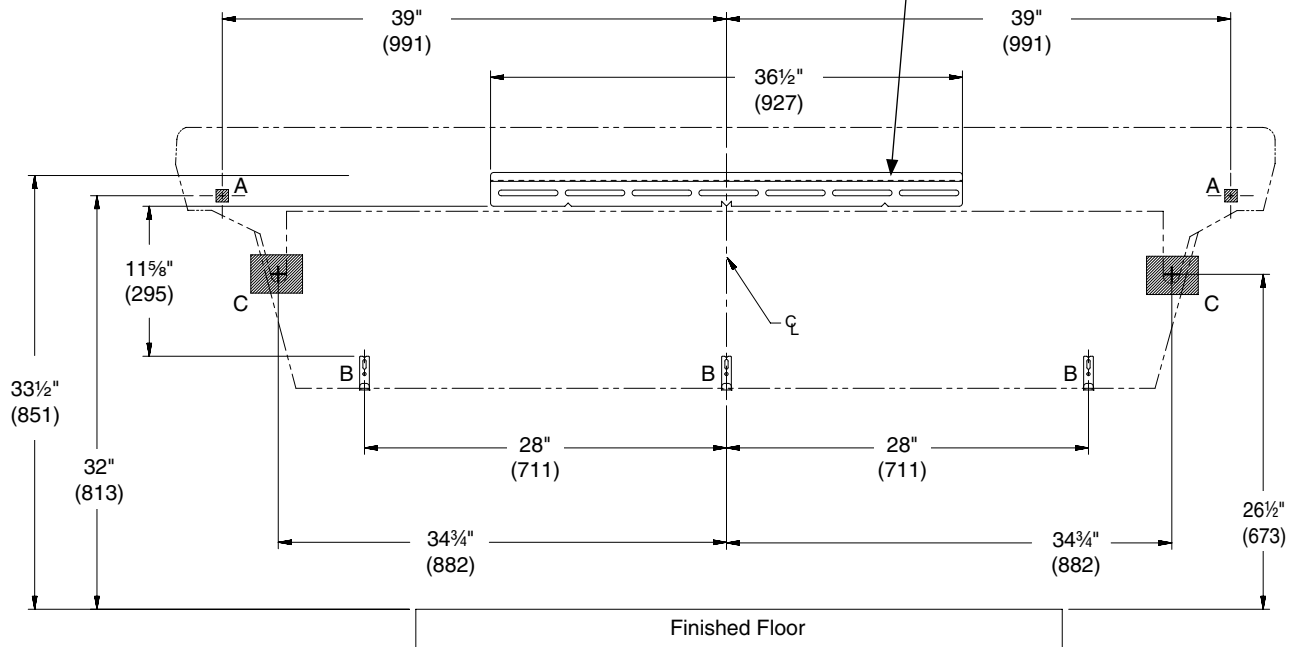


Mounting for standard ADA and TAS height shown.



Areas highlighted in gray require sufficient backing compliant with local building codes.

Secure bracket to wall using min. (2) $\frac{3}{8}$ " anchor bolts to the left of C/L and min. (2) $\frac{3}{8}$ " anchor bolts to the right of C/L. The (2) anchor bolts to the right of C/L must be min. 16" apart from the anchor bolts to the left of C/L. When mounting is complete, check to ensure the bracket is level.



CODE	DESCRIPTION	QTY.
A	Install (1) $\frac{3}{8}$ " wall anchor with a minimum pull-out force of 1,000 lb per local codes at locations shown	2
B	Install (2) wall anchors per bracket with a minimum pull-out force of 100 lb per local codes at locations shown	4
C	Provide structural backing compliant with local building codes.	2

Rim Height	Vertical Height Adjustments	Fixture Style
33 $\frac{1}{2}$ "	No Adjustment	Standard ADA & TAS
30 $\frac{1}{2}$ "	Subtract 3"	Juvenile ADA & TAS
26"	Subtract 7 $\frac{1}{2}$ "	Junior



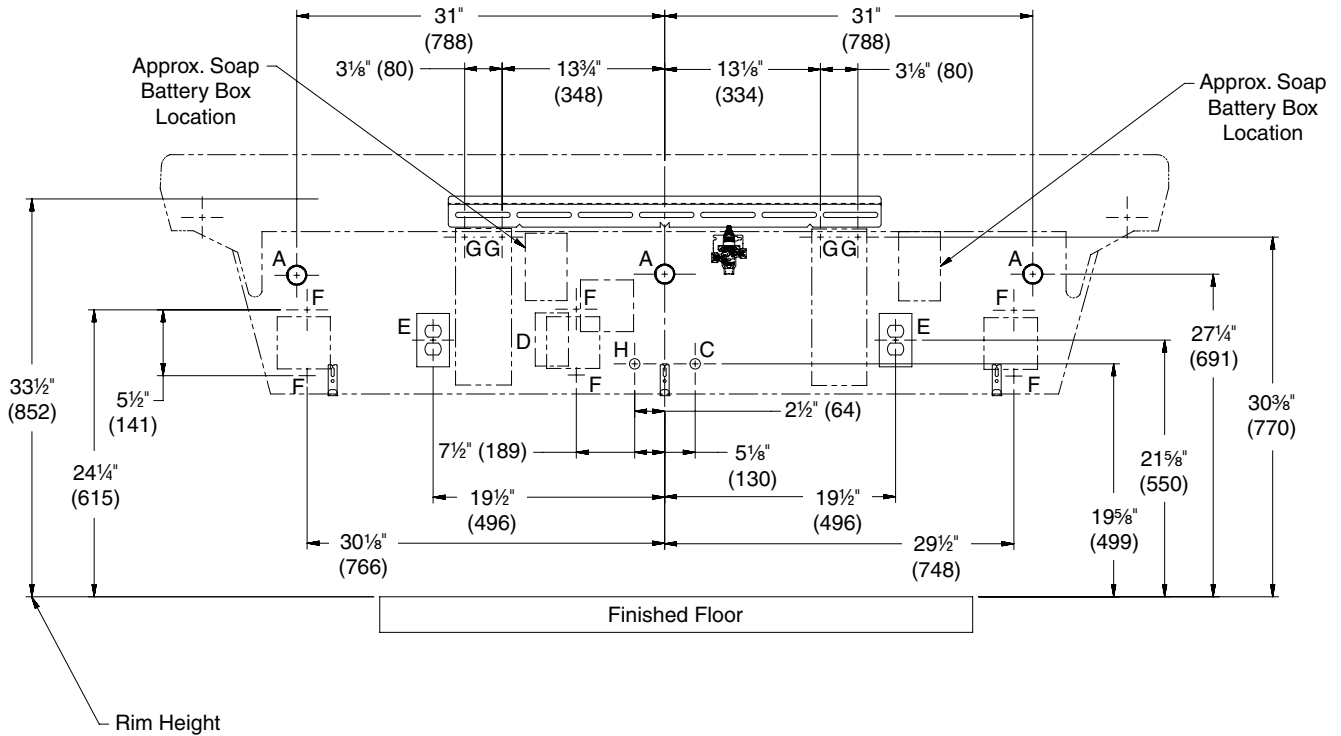
ELX-3 Express® Lavatory System – ELX-Series

Electrical Rough-Ins – Shared Soap Option

(mm)



Mounting for standard ADA and TAS height shown.



CODE	DESCRIPTION	QTY.
A	1 1/2" NPT Drain, Stub-out 2" from wall, individual waste option	3
H,C	1/2" Nominal (5/8" O.D. Comp.) Hot/Cold supplies, Stub-out 2" from wall	1
D	Use alternate location for electrical outlet and faucet control box for multi-feed systems	-
E	110V GFI protected electrical outlet (AC faucet and soap only)	3
F	#10 Anchors for Faucet Control Box Installation	6
G	#10 Anchors for Soap Tank Installation	4



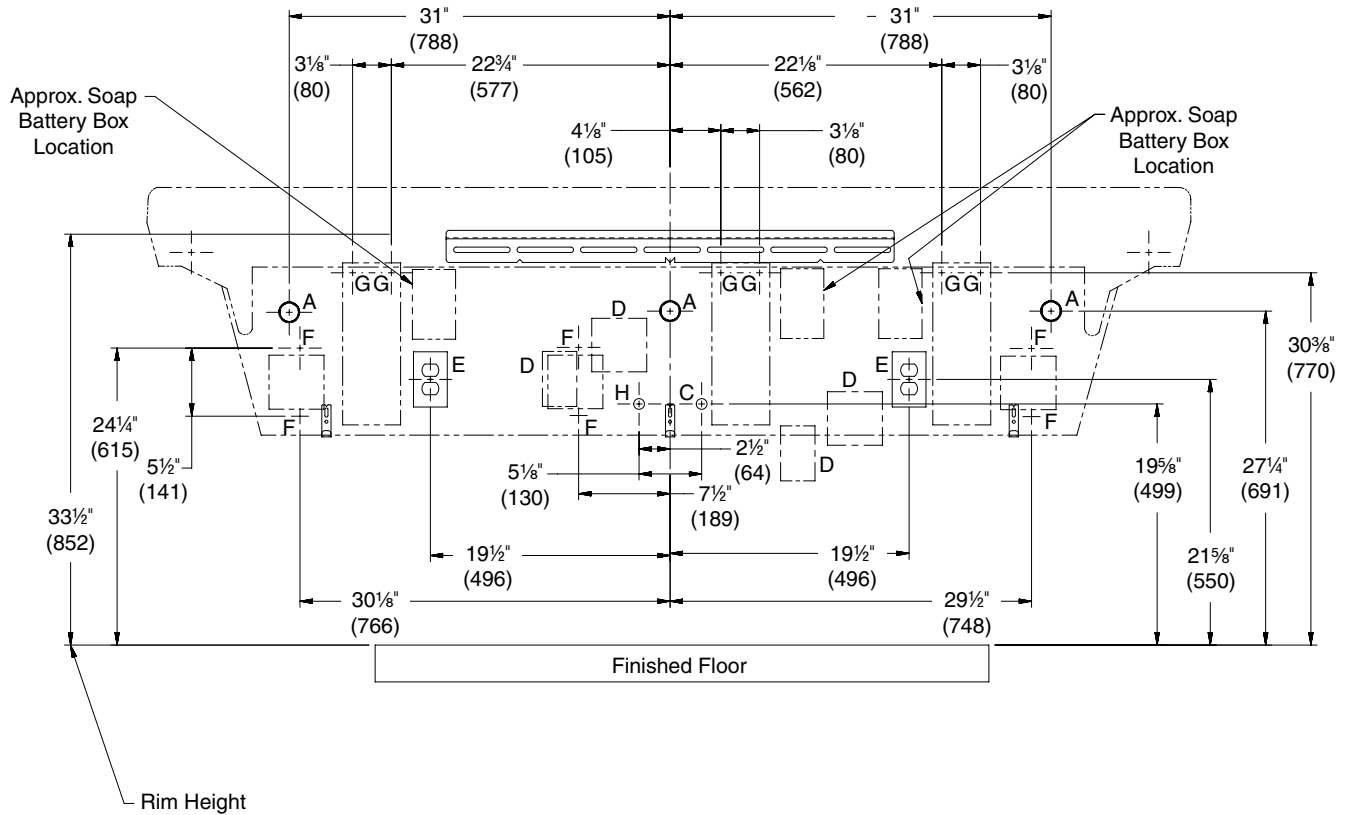
ELX-3 Express® Lavatory System – ELX-Series

Electrical Rough-Ins – Personal Soap Option

(mm)



Mounting for standard ADA and TAS height shown.



CODE	DESCRIPTION	QTY.
A	1 1/2" NPT Drain, Stub-out 2" from wall, individual waste option	3
H,C	1/2" Nominal (5/8" O.D. Comp.) Hot/Cold supplies, Stub-out 2" from wall	1
D	Use alternate location for electrical outlet and faucet control box for multi-feed systems	-
E	110V GFI protected electrical outlet (AC faucet and soap only)	3
F	#10 Anchors for Faucet Control Box Installation	6
G	#10 Anchors for Soap Tank Installation	6



ELX-3 Express® Lavatory System – ELX-Series

Electrical Rough-Ins – Combined Waste Option

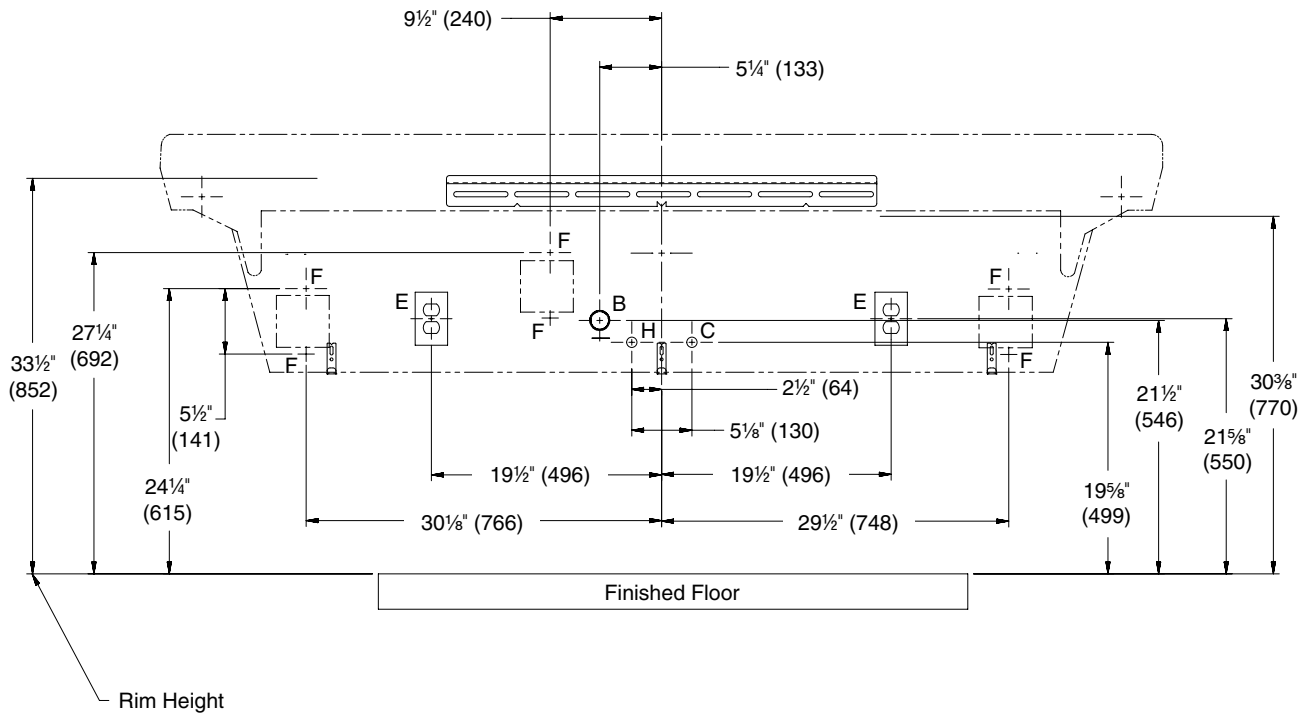
(mm)



Mounting for standard ADA and TAS height shown.



This option is only available with no soap or soap drilling.



CODE	DESCRIPTION	QTY.
B	1½" NPT Drain, Stub-out 2" from wall, combined waste option (waste arms to be cut in field)	1
H,C	½" Nominal (⅝" O.D. Comp.) Hot/Cold supplies, Stub-out 2" from wall	1
E	110V GFI protected electrical outlet (AC faucet and soap only)	3
F	#10 Anchors for Faucet Control Box Installation	6



ELX-3

Express® Lavatory System – ELX-Series

Models (Must select one) <table border="1"> <thead> <tr> <th>Model</th> <th>Description</th> </tr> </thead> <tbody> <tr> <td>ELX-3</td> <td>Express Lavatory System ELX-3</td> </tr> </tbody> </table>		Model	Description	ELX-3	Express Lavatory System ELX-3	Soap Dispenser Type (select one) 6-3100 Verge Deck-Mounted Soap Dispenser – Crestt Series △ 6-3300 Verge Deck-Mounted Soap Dispenser – Metro Series △ 6-3500 Verge Deck-Mounted Soap Dispenser – Linea Series △ 6-3700 Verge Deck-Mounted Soap Dispenser – Zen Series △ SDO 1-3/8" Soap Drilling Only NSD No Soap Dispenser/No Drilling	
Model	Description						
ELX-3	Express Lavatory System ELX-3						
Standard Selections (Must select one from each category) Faucet Type (select one) S53-3100 Verge Faucet – Crestt Series S53-3300 Verge Faucet – Metro Series S53-3500 Verge Faucet – Linea Series S53-3700 Verge Faucet – Zen Series 4" Set 4" Centerset (1¼" Drilling Only) SHANK Centershank (1¼" Drilling Only) NFD No Drilling		Soap Drilling Location (select one) SSD Shared Soap Drilling (centered between faucets - 2 drillings) PSD Personal Soap Drilling (next to each faucet - 3 drillings) <i>NOTE: Refer to page 2 for soap drilling locations.</i>					
Faucet Activation Type (select one) R Touch-Free Activation △ NONE No Activation ▲		Soap Activation Type (select one) R Touch-Free Activation ◇ NONE No Activation ♦					
Water Supply Type (select one) T Thermostatic Mixing Assembly (supply hoses and shut-offs included) L Single Tempered Line Assembly (supply hoses and shut-offs included)		Soap Type ◇ (select one) F Foam Soap L Liquid Soap					
Flow Control Type △ (select one) 3 0.35 gpm Silicone Tip, Multiple Individual Laminar Flow Streams 5 0.50 gpm Silicone Tip, Multiple Individual Laminar Flow Streams		Soap Fill System ◇ (select one) T Single (top fill at spout) M Multi-Feed (shared tank, includes 6-SOAP-MFT Multi-Feed Soap Tank Assembly)					
Faucet Finish Type △ (select one) PC Polished Chrome BB Brushed Black Stainless BS Brushed Stainless BZ Brushed Bronze BR Brushed Brass BN Brushed Nickel		Soap Dispenser Finish Type ◇ (select one) PC Polished Chrome BB Brushed Black Stainless BS Brushed Stainless BZ Brushed Bronze BR Brushed Brass BN Brushed Nickel					
Faucet Power Supply (select one) AC AC Power △ ** BA Battery – 4x AA alkaline batteries included per faucet △ NONE No Power Supply ▲		Soap Power Supply (select one) AC AC Power ◇ ** BA Battery – 4x D-cell batteries included per dispenser ◇ NONE No Power Supply ♦					

* Non-cancelable, non-returnable.

** AC power supply will include either individual AC plug-in adapter or 4-way AC splitter assembly depending on configuration.

△ Available with faucet selection only.

▲ Available with faucet drilling only.

◇ Available with soap dispenser selection only.

♦ Available with soap drilling only.

† This color contains large, randomly distributed chips.



ELX-3

Express® Lavatory System – ELX-Series

Standard Selections (Must select one from each category)

Color of Terreon Deck (select one)

Standard Colors

ALP-WHT	Alpine White	LONDON	London Gray
AVALANCHE	Avalanche†	MOONSTONE	Moonstone†
BONE	Mesa Bone	O-TAUPE	Organic Taupe
DRIFT	Driftwood†	PEBBLE	Pebble Beach
DS-WHT	Designer White	PEP-WHT	Peppered White
DUNE	Sand Dune†	POLAR	Polar Ice†
E-GRAY	Empire Gray	SAND	Sandtrap
GLACIER	Glacier	S-CREEK	Stone Creek
GRAPH	Graphite	S-MIST	Silver Mist
LANNON	LannonStone	WHT-SAND	White Sand

Designer Colors* (available at an additional charge)

ARC-CHIP	Arctic Chip	COFFEE	Coffee Bean
RIVER	Riverstone		

TerreonRE Colors* (available at an additional charge)

BIRCH BARK	Birch Bark	MOONDUST	Moon Dust
DUSK	Dusk	OAT	Oat

Backsplash Type (select one)

BS	Integral 2½" Coved Backsplash
NBS	No Backsplash

Access Panel Type (select one)

COAL	Coal
-------------	------

Waste Assembly Type (select one)

CW-CHROME	Chrome-Plated Combined Waste Assembly (1 P-Trap/1 drain connection) ♦
CW-POLY	Polypropylene Combined Waste Assembly (1 P-Trap/1 drain connection) ♦
IW-CHROME	Chrome-Plated Individual Waste Assembly (3 P-Trap/3 drain connections)
IW-POLY	Polypropylene Individual Waste Assembly (3 P-Trap/3 drain connections)
NONE	Waste Assembly by Others

* Non-cancelable, non-returnable.

** AC power supply will include either individual AC plug-in adapter or 4-way AC splitter assembly depending on configuration.

△ Available with faucet selection only.

▲ Available with faucet drilling only.

◇ Available with soap dispenser selection only.

◆ Available with soap drilling only.

† This color contains large, randomly distributed chips.