



**AMERICAN SPECIALTIES, INC.**

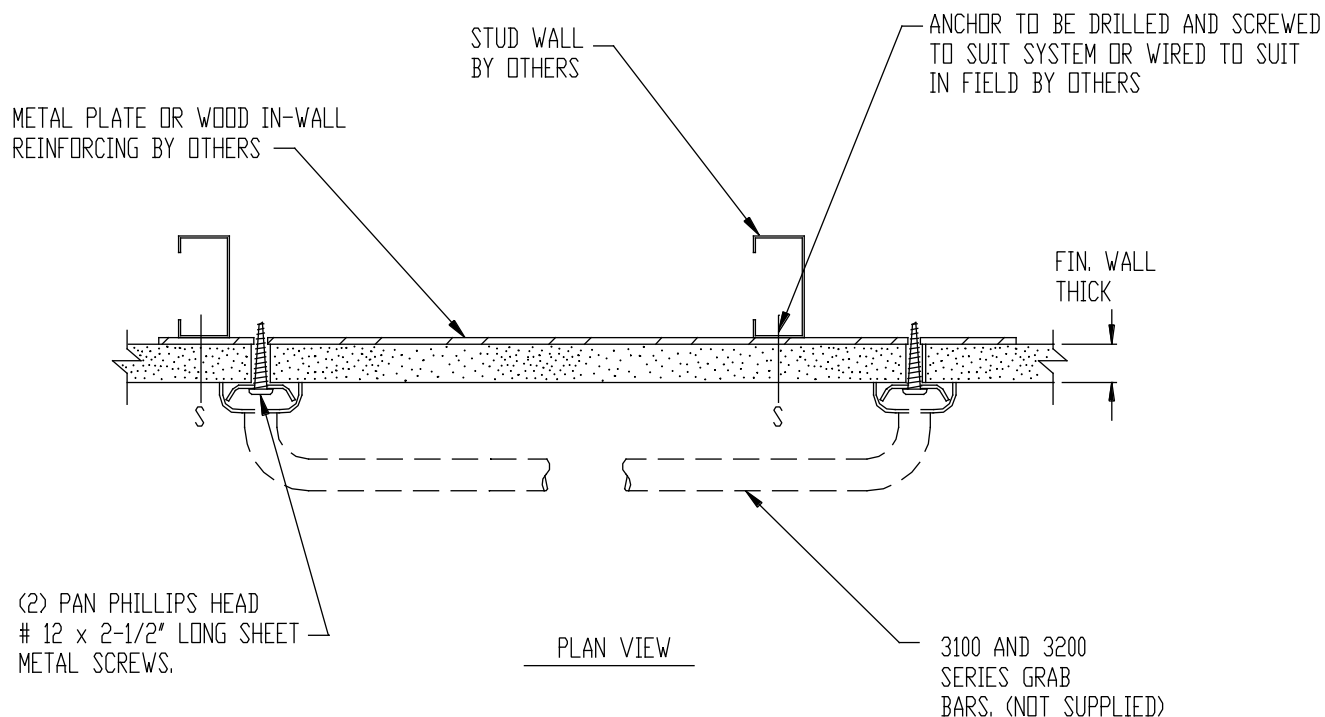
441 Saw Mill River Road, Yonkers, NY 10701 (914) 476-9000

MODEL No: 3902

ISSUED: 1-87

REVISED: 5-99

## WALL ANCHOR



### **SPECIFICATION**

Wall Anchor shall be suitable for use in dry wall partitions to secure grab bars with concealed type mounting flanges (e.g. ASI series 3100, and 3200). Wall anchors shall be #12 x 2-1/2" long self-tapping Phillips pan head screws. Anchor kit shall contain (2) self-tapping Phillips pan head screws. Specify one (1) kit per flange.

**Wall Anchor shall be Model № 3902 of American Specialties, Inc., 441 Saw Mill River Road, Yonkers, New York 10701-4913**

### **INSTALLATION**

For compliance with ADA Accessibility Guidelines mount grab bar so that horizontal centerline is 33" (838mm) minimum to 36" (914mm) maximum above finished floor. Locate grab bar in exact mounting position on wall and transfer centerlines of holes from each tenon plate per flange onto dry-wall that is suitably reinforced and code compliant. Drill holes into drywall and reinforcement or blocking at these centerline locations to suit screws furnished. Insert screws through tenon plates of grab bar and tighten onto wall. Place grab bar over wall mounted tenon plates and secure with set screws furnished with grab bar.

**Accessory Specialties**

**AMERICAN DISPENSER**

**Desert Ray Products**

**WATROUS INC.**

THIS MANUFACTURER RESERVES THE RIGHT TO MAKE CHANGES IN DESIGN OR DIMENSIONS WITHOUT FORMAL NOTICE