

Model: SD2010B

Sanitary napkin disposal bag dispenser, for use with SB8836 S.A.C. disposal bags

Surface -mounted

Mfg.: Golden Group International, Ltd.

Finish: Stainless steel.

Options:

Stainless steel

Measures:

- Dimensions: 6.25" W x 5.25" H x 1.5" D

Product Materials:

- Stainless steel: 22-gauge stainless steel using 80% recycled steel content

Capacity:

50 Sanitary Napkin Disposal Bags



SD2010B shown with SB8836 disposal bags

Operation:

The S.A.C. SD2010B dispenses sanitary napkin disposal bags through an oval opening in the front of the unit. The user pulls out one bag as needed. The front cover opens to refill the units with a box of the S.A.C. sanitary napkin disposal bags and is attached with a sturdy full-length piano hinge. This unit locks with a keyed lock. Welded construction. Comes with 2 pre-drilled mounting holes, mounting hardware & key. Wall or partition mountable. Made in the USA

This dispenser measures: 6.25" W x 5.25" H x 1.5" D. For use with one box of S.A.C. SB8836 sanitary napkin disposal bags.

Dispenses:

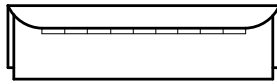
S.A.C. Sanitary napkin disposal bags. 50 bags per box (sold separately).

Primary Area for Product Usage:

Restroom, in easy reach from the toilet

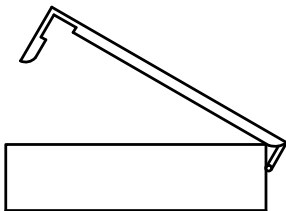
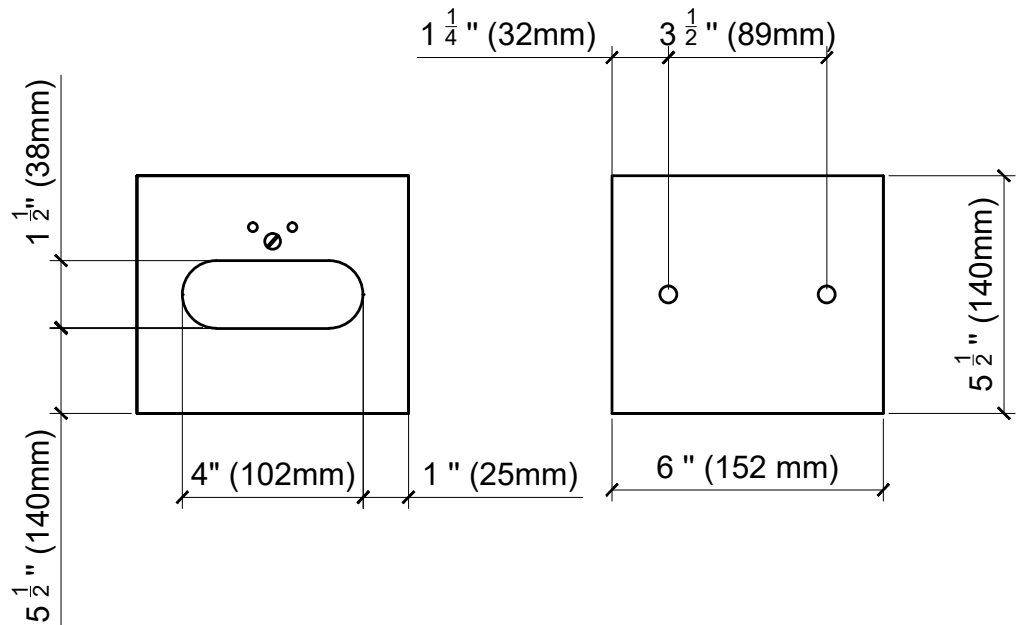
Dimensions

Top view

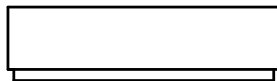


Front view

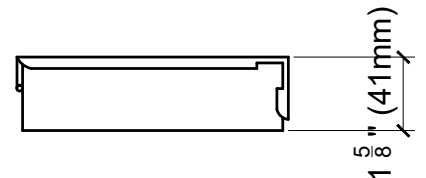
Back view



Side view



Bottom view



Side view

Available in:



Stainless steel

ADA Compliant:

- Consult local and national accessibility codes for proper installation guides.
 - Conformity and compliance with local and national codes is the responsibility of the installer.
-

More Information:

Part number: SD2010B

Manufacturer: Golden Group International, Ltd.

Height: 5.25 inches

Width: 6.26 inches

Depth: 1.5 inches

Finish: Stainless steel

Color: Silver

Material: Stainless steel

Mount type: Surface

Style: single sided

Type: Sanitary napkin disposal bag dispenser, box format

Recycled steel content: 80%

Information on installation:

Mount securely to a wall with screws approved and supplied by building maintenance. Use all mounting holes provided.

For partitions with particle-board or other solid core, provide sheet-metal screws or through-bolts, nuts and washers. For hollow core metal partitions, provide solid backing into which sheet metal screws can be secured. If two units are installed back to back, then provide threaded sleeves and machine screws for the full thickness of partition.

For plaster or drywall construction, provide concealed backing to comply with local building codes, then secure unit with sheet-metal screws.

For all other wall surfaces, provide sheet metal screws and fiber plugs or expansion shields or toggle bolts or expansion bolts.