



Technical Pro
Professional 2CH Amplifier
User Manual for:
AX2000

WARNING!

CAUTION: TO REDUCE THE RISK OF ELECTRIC SHOCK, DO NOT REMOVE THE COVER OF THIS UNIT. THERE ARE NO USER-SERVICEABLE PARTS INSIDE. REFER ALL SERVICING TO A QUALIFIED TECHNICIAN.



The lightning flash with arrowhead symbol within an equilateral triangle is intended to alert the user to the presence of dangerous voltage within the product's enclosure that may be of sufficient magnitude to constitute a risk of electric shock to humans. Users should exhibit extra safety when this symbol appears in this instruction manual and follow all precautions as they are stated.



The exclamation point within an equilateral triangle is intended to alert the user to the presence of important operating and maintenance (servicing) instructions in this manual.

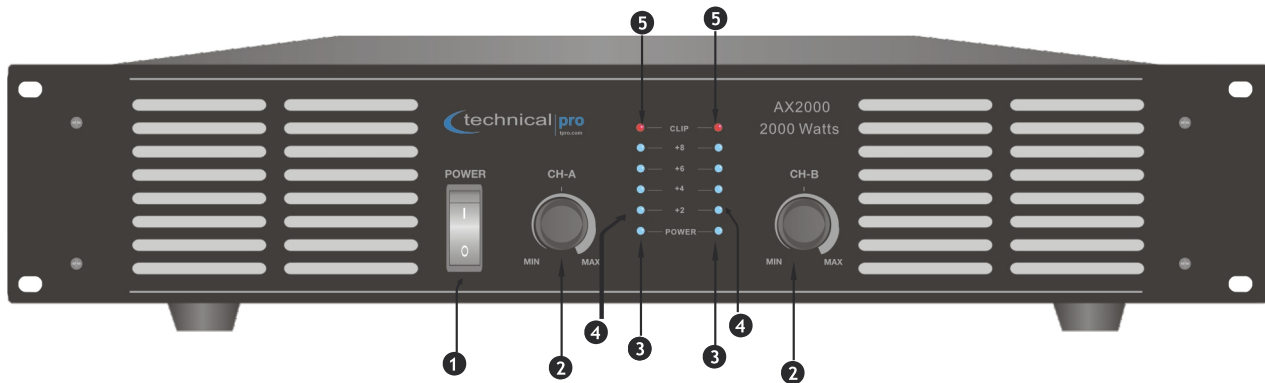
- 1- Read these instructions thoroughly before using this item.
- 2- Keep these instructions for future reference.
- 3- Heed all warnings.
- 4- Follow all instructions.
- 5- **WARNING:** To prevent fire or electric shock, do not expose this equipment to rain or moisture. Do not store or operate this product near any liquids.
- 6- Clean only with a dry cloth.
- 7- Do not store or operate this product near any heat sources such as radiators, heat registers, stoves, or other apparatuses (including amplifiers) that produce heat.
- 8- Do not defeat the safety purpose of the polarized or grounding-type plug. A polarized plug has two blades with one wider than the other. A grounding plug has two blades and a round grounding prong. The wide blade or third prong is provided for your safety. If the provided plug does not fit your outlet, consult an electrician for the replacement of the obsolete outlet.
- 9- Protect the all wires connected to this unit from being walked on or pinched, particularly plugs and the point where they exit from the unit. When removing the cord from the power outlet, remove it by holding the plug not by pulling the cord.
- 10- Unplug the unit during lightning storms or when unused for long periods of time.
- 11- When wiring this unit and all other equipment used in connection to this unit make sure that all of your equipment is turned OFF.
- 12- Once installation and wiring is complete power on all your equipment with the volume and level controls turned DOWN. Once all the equipment is ON slowly raise the volume or level controls to their proper positions.
- 13- When grounding this unit, be sure to do so correctly, so as not to defeat the built-in grounding in this unit.
- 14- When you have finished using this unit, be sure that both tray doors are closed using the open / close button before powering off the unit.
- 15- Before placing, installing, rigging, or suspending any product, inspect all hardware, suspension, cabinets, transducers, brackets and associated equipment for damage. Any missing, corroded, deformed, or non-load rated component could significantly reduce the strength of the installation, placement or array. Any such condition severely reduces the safety of the installation and should be immediately corrected. Use only hardware which is rated for the loading conditions of the installation and any possible short-term, unexpected overloading. Never exceed the rating of the hardware or equipment.
- 16- Consult a licensed, professional engineer regarding physical equipment installation. Ensure that all local, state and national regulations regarding the safety and operation of equipment are understood and adhered to.
- 17- Refer all servicing to qualified service personnel. Servicing is required when the apparatus has been damaged in any way, such as power supply cord or plug is damaged, liquid has been spilled or objects have fallen into the apparatus, the apparatus has been exposed to rain or moisture, does not operate normally, or has been dropped.

Introduction

Congratulations and thank you for your purchase of this Technical Pro professional amplifier, the AX2000. To get the most from our AX2000, it is recommended that you review all of the information provided in the instruction manual before operating the equipment.

If you've spent any time at all in professional audio, you know the name Technical Pro and what it stands for- incredible performance & sound, and the ultimate in reliability under harsh conditions. And now, Technical Pro offers the same technology in a series of amplifiers bringing more of what sets Technical Pro apart from all others.

AX2000 Front Panel



1. POWER SWITCH

This button turns on the power to the amplifier.

Before turning on the amplifier, set the input gain and volume knobs all the way down.

2. VOLUME CONTROL

These two controls are used to adjust the output volume of each channel of the power amplifier.

3. POWER LED INDICATOR

These indicators will illuminate when the AC main power is being supplied to the amp and both channels are operational. If the channel experiences faulty conditions, then the channel power LED will not illuminate.

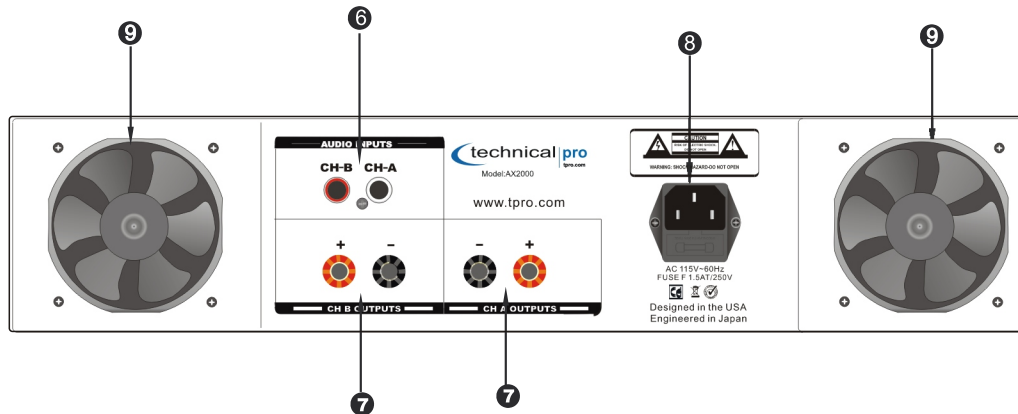
4. LEVEL LED INDICATOR

Channel A and Channel B level LED indicator. Allows you to monitor the decibel level of the source's input. If the CLIP LED illuminates the input gain / volume levels should be adjusted.

5. OVERLOAD (CLIPPING) LED INDICATOR

These indicators illuminate when the associated channel has been overloaded. If the Clip (red) LED is consistently illuminating adjust the input gain and volume knob to prevent damaging your amplifier or speakers.

AX2000 Rear Panel



6. RCA INPUTS

Connect the RCA connectors from your signal source to the RCA inputs.

7. BANANA BINDING POST OUTPUTS

There are two banana binding post outputs on the rear of the Ax3000. Make sure the banana binding posts are tightly screwed in place before connecting a cable with a banana connector. When using a speaker wire with the Banana binding post follow the instructions on page 5 to installation instructions.

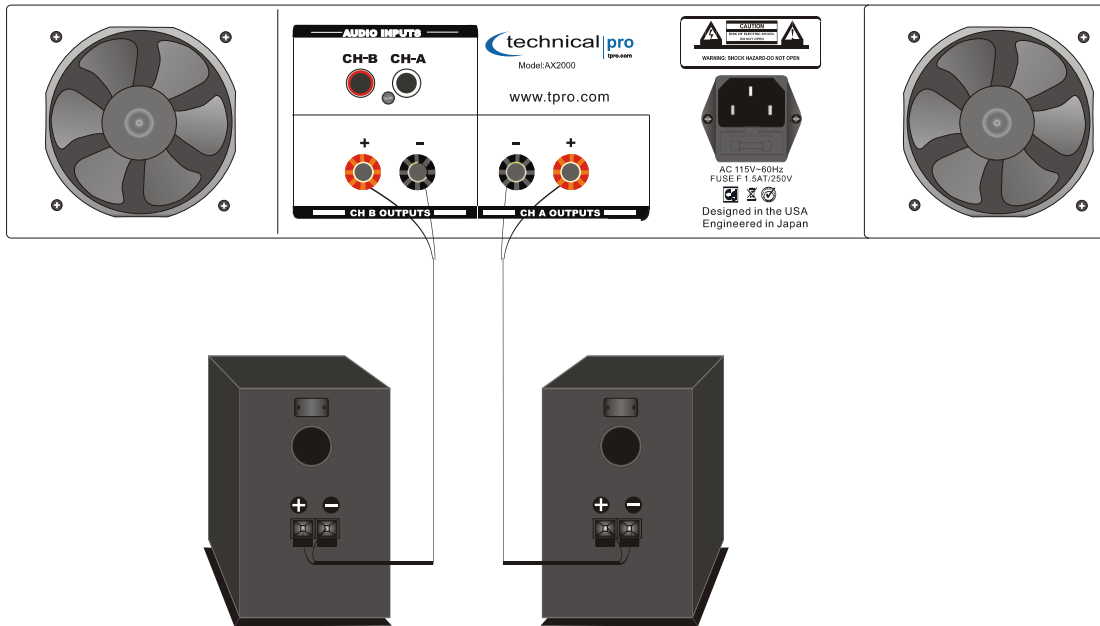
8. POWER SUPPLY

This is a standard IEC power connector.

9. COOLING FAN

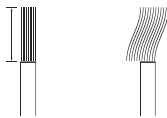
Two cooling fans supply cool fair to the amplifier. The fans switch to high speed automatically when the temperature of the unit reaches a certain degree.

Wiring the Amplifier using Speaker Wire



There are two banana binding post outputs on the rear of AX2000. To use banana binding post outputs you will need to use a banana connector or speaker wire. You can connect the speakers to these speaker outputs via the speaker cable included. See below on how to connect two speakers to the AX2000 banana binding post outputs using speaker wire.

1. Remove approximately 10 mm (0.4 in) of insulation from the end of each speaker cable and twist the exposed wires of the cable together to prevent short circuits.



2. Unscrew the main speaker output terminal on the rear of the AX2000. Insert the exposed speaker wire into the opening.



3. Tighten the knob.



NOTE: WHEN MAKING THESE CONNECTIONS THE POWER OF THE AX2000 AND THE SIGNAL SOURCE SHOULD ALL BE IN THE OFF POSITION WITH THE VOLUME LEVELS TURNED DOWN

AC POWER CORD CONNECTION

To connect the power cord to your amplifier simply plug female side of the power cord into the power cord input which is on the rear of the amplifier. Then plug the male side of the power cord to an electric outlet. The AC power cords supplied purposefully have 2 blades and one grounding prong. If your outlet is not equipped to handle this type of plug, do not attempt to forcefully plug this AC power cord into the outlet, and do not alter the plug so that it can fit in the outlet. The only course of action you can take is to find another outlet which is properly equipped to handle a grounded plug or have an electrician upgrade your electrical outlet. Be sure that the plug is well connected so that it does not disconnect in the middle of usage. If any point in time the supplied AC power cord is punctured or damaged replace it with a new power cord from a local electrician

NOTE: ONLY PLUG IN THE AC POWER CORD WHILE THE UNIT'S POWER IS OFF AND THE VOLUME IS TURNED DOWN. TURNING ON THE UNIT WITH THE VOLUME TURNED UP MAY CAUSE THE UNIT OR ANY SPEAKERS CONNECTED TO IT TO BE DAMAGED. ALWAYS TURN DOWN THE VOLUME PRIOR TO TURNING OFF THE UNIT.

INPUT / OUTPUT CONNECTIONS

Connecting the signal source to the AX2000 (DVD/MIXER etc.)

The AX2000 has two RCA input jacks on the rear of the unit which is designed to receive the signal directly from your DVD, mixer or any of your other 2 Channel signal sources. To ensure that you have correctly connected your DVD player (other sound sources) to the unit, make sure that the DVD player has a RCA cord coming from its output and that this cord is plugging into the RCA input on the rear of the AX2000. Ensure that the polarity of your signal is always maintained by using color coordinated RCA cables.

NOTE: BE SURE NOT TO CONNECT AN AMPLIFIER OR ANY AMPLIFIER SIGNAL INTO THE RCA INPUT JACK. AS THIS COULD DAMAGE THE AX2000. NO OTHER AMPLIFIER IS NEEDED TO POWER YOUR SIGNAL IN ADDITION TO THE AX2000. ALWAYS MAKE SURE THAT THERE IS ONLY ONE AMPLIFIER IN THE SIGNAL PATH.

Connecting the AX2000 to passive speakers

The amplifier is designed to power up to two full range passive loudspeakers. Connect up to two speakers using the banana binding post outputs with a banana connector or speaker wire. If you are using speaker wire to connect via the banana binding post, follow the instructions on Page 5.

NOTE: WHEN MAKING THESE CONNECTIONS THE POWER OF THE AX2000 AND THE SIGNAL SOURCES SHOULD ALL BE IN THE OFF POSITION WITH THE VOLUME LEVELS TURNED DOWN. ONCE THE UNITS ARE ALL POWERED ON, SLOWLY INCREASE THE VOLUME TO AVOID DAMAGING ANY OF YOUR EQUIPMENT. THE AMPLIFIER OPERATED MOST EFFICIENTLY WHEN USED WITH 8 OHM SPEAKERS

ACCESSORIES INCLUDED: POWER CABLE, RCA CABLE, MANUAL AND WARRANTY.



LIMITED WARRANTY AND SERVICE

Technical Pro warrants its product to be free from defects in materials and workmanship purchased and serviced in the USA. This Warranty does not cover: (a) defects or damage from abuse, accident, misuse, modifications, neglect, tampering, unusual electrical or physical stress (b) scuffs, scratches or cosmetic damage (c) units with altered, defaced or otherwise illegible serial numbers (d) defects or damage due to improper adjustments, installations, operation, maintenance service or testing (e) products not purchased from an Authorized Technical Pro Dealer and (f) damage occurring during shipment.

This Warranty protects only the original purchaser of the product for a period of 1 year from date of original purchase. Products serviced by Technical Pro's authorized repair center are warranted to be free from defects in materials and workmanship for a period of 90 days, or the remainder of the original warranty period, whichever is greater. This Warranty is not extended by the length of time which you are deprived of the use of this item. Technical Pro will repair or replace products covered by this Warranty at no charge for parts and labor. Technical Pro may use new, repaired, or refurbished parts to repair any unit. If it is determined that the item is not covered by this Warranty for any reason the purchaser will be responsible for any parts, labor, and shipping charges associated with the repair and return of the unit in question. Technical Pro reserves the right to change the design of any product without notice and with no obligation to make corresponding changes in products previously manufactured.

To be eligible for service while your unit is under warranty you must return the product to Technical Pro's Return Department at the shipper's expense. Technical Pro will not accept COD packages and no call tags will be issued for defective merchandise. The unit must be sent back in its original packaging materials with all original accessories and remote (if applicable). Be sure to include the following information when sending your product: (a) contact name (b) return address (c) telephone number / email address (d) a copy of the original bill of sale, invoice or proof of purchase which clearly states the model number, seller's name and contact number (e) detailed description of the failure is displaying (f) a brief description of the wiring of any other components used in conjunction with this unit (g) check or money order for ~~\$29.99~~ made out to Technical Pro for shipping and handling fees (h) a Return Merchandise Authorization (RMA) number clearly written on the exterior of the shipping carton.

All of the above must be included with your package otherwise your package will not be eligible for warranty service.

To obtain a return merchandise authorization number email RA@tpro.com. In your email include your full name, return address, model number, purchase date, copy of Invoice or sales receipt and product malfunction.

If do not have email access but require a RMA number please mail this information to:

Technical Pro
RMA Department
140 58th Street
Box #85
Brooklyn, NY 11220

Once determined if your product is eligible for warranty repairs a RMA number will be emailed to you. If you product is not eligible for warranty covered service you unit can still be serviced at Technical Pro's current rates for parts and labor.

Any shipments without a RMA number or exhibiting physical shipping damage on arrival to Technical Pro's servicing center will not be serviced and will be returned as-is.

Ship your warranty eligible item to:

Technical Pro Inc.
Authorized Repair Center
140 58th Street
Suite 5G
Brooklyn, NY 11220

All implied warranties, including warranties of merchantability and fitness for particular purpose, are limited in duration to the length of this warranty.

Exclusion on Damages:

Technical Pro's liability for any defective product is limited to the repair or replacement of the product at our option. Technical Pro shall not be liable for any incidental or consequential damages of any kind. This includes: (a) any damage to other products resulting from such a defect (b) damages based upon inconvenience, loss of use of the product, loss of profit, injury, and (c) any other damages, whether incidental, consequential, indirect or otherwise. Some states do not allow limitations on how long an implied warranty lasts and/or do not allow the exclusion or limitations of incidental or consequential damages, so the above exclusions may not apply to you. This warranty gives you specific legal rights, and you may also have other rights, which vary from state to state.