

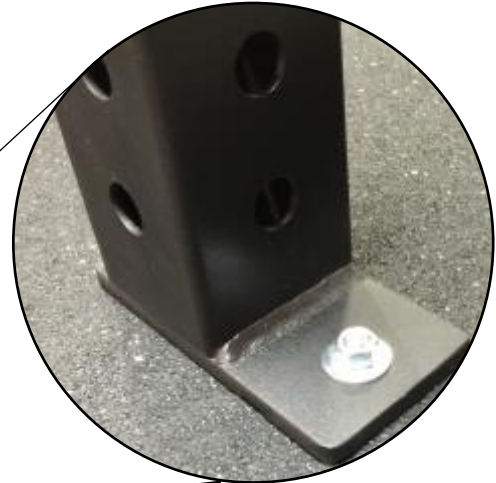


URGENT WARNING

Rack & Rig units **MUST** be anchored to the floor on all sides.

Failure to anchor rack & rig units may lead to severe injury or even death. If you are not comfortable installing this unit, we recommend hiring a licensed and bonded technician.

Ensure ALL hardware is checked and completely tightened after assembly and before each use.



Questions?

Contact customer support at 888-473-0108 or email support@americanbarbell.com

American Barbell : 6020 Progressive Ave #500 : San Diego CA 92154